

## Product datasheet for MR222946

### Zdhhc18 (NM\_001017968) Mouse Tagged ORF Clone

#### Product data:

Product Type:	Expression Plasmids
Product Name:	Zdhhc18 (NM_001017968) Mouse Tagged ORF Clone
Tag:	Myc-DDK
Symbol:	Zdhhc18
Mammalian Cell Selection:	Neomycin
Vector:	pCMV6-Entry (PS100001)
E. coli Selection:	Kanamycin (25 ug/mL)
ORF Nucleotide Sequence:	>MR222946 representing NM_001017968 Red=Cloning site Blue=ORF Green=Tags(s)

TTTTGTAATACGACTCACTATAGGGCGGCCGGGAATTCGTCGACTGGATCCGGTACCGAGGAGATCTGCC  
GCCCGGATCGCC

ATGAAGGACTGCGAGTACCAGCAGATAAGCCCCGGGGCCGCCCGCCCGCCCTCCCCGGGGCGCGTC  
GCCCGGGCCCCGCGCGCCCCCTGCTCCAAGCCCCGGGCCCGCGCTGGCGCGCCGCGTGGAGCGGCAG  
CGGCAGCGGCAGCGGGAGCCTGGGCCCGCGCCCCGGCGTAAGTGGGAGGTGTTCCCGGGCCGAACCGC  
TTCTACTGCGGAGCGCGCTCATGCTGGCCGGCCACGGCGCGTCTTCGCGCTCACGCTGCTCATCC  
TCAGACCACCATCCTCTTCTTCGCTTTCGACTGTCCCTACCTGGCCCGCACACTGACCCCTGGCCATTCC  
TATCATCGCTGCCATCCTCTTCTTCTTCGTCATGAGCTGTCTCCTGCAGACCAGTTTCACGGACCCCTGGC  
ATCCTGCCCCGGGCCACCATCTGTGAGGCCGCTGCCCTGGAGAAGCAGATCGATAACACAGGCAGCTCCA  
CATACCGACCGCCCCCTCGGACTCGGGAGGTGATGATCAACGGGCAGACAGTGAACTCAAGTATTGCTT  
CACCTGTAAGATGTTTCGGCCTCCCCGGACCTCGCACTGCAGTGTCTGCGACAACGTGTGGAACGGTTT  
GACCATCACTGCCCTGGGTGGGCAACTGTGTGGGAGACGGAACCTACCGCTTCTTTATGCGTTTATTC  
TCTCCCTCTCCTTCTTGACGGCCTTCATCTTCGCTGCGTGGTCAACCCACCTGACCCCTTCTTTCTCAAGG  
AAGCAACTTCTCTCGCTCTGAAAAGACACCAGCAAGTGTGCTGGAGTTGGTCATCTGCTTCTCTCA  
ATCTGGTCCATCCTGGGCCTCTCAGGGTCCACACGTACCTCGTGGCCTCCAACCTGACAACCTAACGAAG  
ATATCAAAGGGTCTTGGTCCAGCAAGAGGGGTGGCGAGGGCTCTGTCAACCCCTACAGCCATAAAAGTAT  
TATCACCAACTGCTGTGCTGTGCTGTGGCCACTGCCTCCCAGCCTGATTGACCGCGCAGGATTCTGTG  
CAGTCTGATACCGCGTTGCCCTCGCCATCAGAAGTGATGACCCGGCCTGTGGAGCCAAGCCAGACGCCA  
GCATGGTAGGAGGCCACCCC

ACGCGTACGCGGGCCGCTCGAGCAGAACTCATCTCAGAAGAGGATCTGGCAGCAAATGATATCCTGGATT  
ACAAGGATGACGACGATAAGGTTTAA



[View online »](#)

**Protein Sequence:** >MR222946 representing NM\_001017968  
 Red=Cloning site Green=Tags(s)

MKDCEYQQISPGAAPPPASPGARRPGPAAPPAPSPGPAPGAPRWSGSGSGSLGRRPRRKWEVFPGRNR  
 FYCGGRLMLAGHGGVFAL TLLLILSTTILFFVFDPCYLARTLTLAIPIIAAILFFVMSCLLQTSFTDPG  
 ILPRATICEAAALEKQIDNTGSSTYRPPPTREVMINGQTVKLYCFTCKMFRPRTSHCSVDCNCVERF  
 DHHCWPVGNVCVGRNRYRFFYAFILSLSFLTAFIFACVVTHLTLLSQGSNFLSALKKTPASVLELVICFFS  
 IWSILGLSGFHTYLVASNLTTNEDIKGSWSKRGGEASVNPYSHKSIITNCCAFLCGPLPPSLIDRRGFV  
 QSDTALPSPIRSDDPACGAKPDASMVGGHP

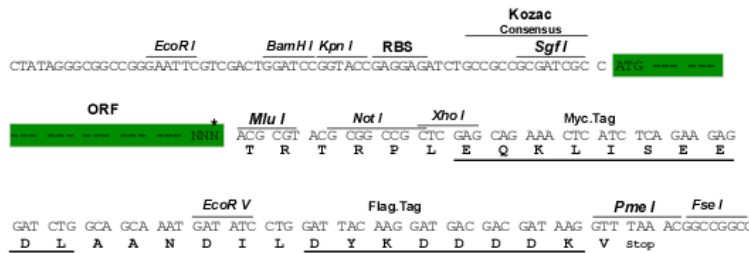
TRTRPLEQKLISEEDLAANDILDYKDDDDKV

**Chromatograms:** [https://cdn.origene.com/chromatograms/mm9093\\_e08.zip](https://cdn.origene.com/chromatograms/mm9093_e08.zip)

**Restriction Sites:** SgfI-MluI

**Cloning Scheme:**

Cloning sites used for ORF Shuttling:



\* The last codon before the Stop codon of the ORF

**ACCN:** NM\_001017968

**ORF Size:** 1140 bp

**OTI Disclaimer:** The molecular sequence of this clone aligns with the gene accession number as a point of reference only. However, individual transcript sequences of the same gene can differ through naturally occurring variations (e.g. polymorphisms), each with its own valid existence. This clone is substantially in agreement with the reference, but a complete review of all prevailing variants is recommended prior to use. [More info](#)

**OTI Annotation:** This clone was engineered to express the complete ORF with an expression tag. Expression varies depending on the nature of the gene.

**Components:** The ORF clone is ion-exchange column purified and shipped in a 2D barcoded Matrix tube containing 10ug of transfection-ready, dried plasmid DNA (reconstitute with 100 ul of water).

**Reconstitution Method:**

1. Centrifuge at 5,000xg for 5min.
2. Carefully open the tube and add 100ul of sterile water to dissolve the DNA.
3. Close the tube and incubate for 10 minutes at room temperature.
4. Briefly vortex the tube and then do a quick spin (less than 5000xg) to concentrate the liquid at the bottom.
5. Store the suspended plasmid at -20°C. The DNA is stable for at least one year from date of shipping when stored at -20°C.

**RefSeq:** [NM\\_001017968.2](#), [NP\\_001017968.2](#)

**RefSeq Size:** 2847 bp

**RefSeq ORF:** 1143 bp

**Locus ID:** 503610

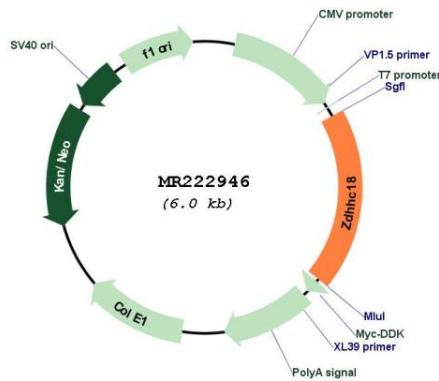
**UniProt ID:** [Q5Y5T2](#)

**Cytogenetics:** 4 D2.3

**MW:** 41.1 kDa

**Gene Summary:** Has palmitoyltransferase activity towards HRAS and LCK.[UniProtKB/Swiss-Prot Function]

### Product images:



Circular map for MR222946