

## Product datasheet for **MR222929**

### Adam19 (NM\_009616) Mouse Tagged ORF Clone

#### Product data:

Product Type:	Expression Plasmids
Product Name:	Adam19 (NM_009616) Mouse Tagged ORF Clone
Tag:	Myc-DDK
Symbol:	Adam19
Synonyms:	AL024287; MADDAM; Mlt; Mltnb; MTLNB
Mammalian Cell Selection:	Neomycin
Vector:	pCMV6-Entry (PS100001)
E. coli Selection:	Kanamycin (25 ug/mL)



[View online »](#)

**ORF Nucleotide Sequence:**

>MR222929 representing NM\_009616  
 Red=Cloning site Blue=ORF Green=Tags(s)

TTTTGTAATACGACTCACTATAGGGCGGCCGGGAATTCGTCGACTGGATCCGGTACCGAGGAGATCTGCC  
 GCC**GCGATCGCC**

ATGCCCGGGCGCGGGCGTTCGCCGGTCTGCTTCTGCTGCTCTCGCTCTGCAGCTACATTGGCCGCTGG  
 CGGCGTGCAGCCGGGATGGACCACAAGAGGAAGCAAGAAGGTAGCCCTCCGCTACAGCATGAACATCAT  
 AATACCTCAGTGGCGGACTTCAGAAAGCCCTGGGAGAGAAAGCATCCACTCAGAGCAGAGCTCAGGGTC  
 ATGGCTGAAGGGCGAGAGCTGATCCTAGACCTGGAGAAGAAGCAGCACCTTTTGTCCAGCCTACACAG  
 AAACCTGTACTACTGCAAGTGGCAATCCTCAAACCAGCACGCTGAAGTCTGAGGATCACTGCTTTTACCA  
 CGGACTGTGAGGGACGTGGATGAGTCCAGTGTACGCTCAGCACCTGCCGGGAATTAGAGGACTGATT  
 ATAGTGAGAAGTAACCTCAGCTACATCATCGAGCCCGTCCCTAACAGCGACAGCCAAACCCGATTTTACA  
 GATCCGAACATCTCAGCTGCCCGGGGAAGTGTGGTTCGAGCACTCCGGGCCACCTCGAAGGACTG  
 GGCCCTTCAGTTACACATCAGACCAAAAAGCAACCTCGCAGAATGAAACGGGAAGATCTACTCTATG  
 AAGTACGTGGAGCTTTACCTGGTGGCTGATTATGCAGAGTTTCAGAAGAATCGACATGACCAGGATGCCA  
 CCAAACGCAAGCTCATGGAGATTGCCAATATGTTGATAAGTTTTACCGCTCCCTGAACATCCGAATTGC  
 ACTTGTCCGCTTGGAGGTGTGGACGCATGGGGATAAGTGTGAAGTTTCAGAGAATCCCTACTCTACCCTC  
 TGGTCTTTCTTGTAGTGGAGGCGCAAGCTGCTTGTCTCAGAAGAGCCATGACAATGCTCAGCTAATCACGG  
 GCAGGTCTTCCAAGGCACCACCATTTGGCTGGCCCCCTCATGGCCATGTGCTCCGTGTACCAGTCTGG  
 AGGAGTTAGCATGGACCACTCCGAGAATGCCATTGGTGTAGCCTCCACTGTGGCCATGAGATTGGCCAC  
 AACTTTGGCATGAGCCATGATTCTGCACACTGCTGTTCTGCCAGTGCAGCCGATGGCGGCTGCATCATGG  
 CCGCCACCGGGCACCTTTCCCAAAGTGTTCAGTTGGTGTAAACAGGAAGGAGCTGGACGGTATCT  
 GCAGACAGGAGGAGGGATGTGTCTCTCCAACATGCCGGACACTAGGACCGTGTATGGAGGCCGGAGGTGT  
 GGCAACGGGTACCTGGAAGACGGTGAAGAATGTGACTGTGGAGAAGAGGAGGAATGTAAGAACCCTTGT  
 GCAATGCCTCCAAGTGCCTCTGAAGGAAGGGCAGAGTGTGCCATGGTTCCTGCTGCCACCAGTGCAA  
 GCTGGTGGCTCCTGGAACCCAGTGTGGGAGCAGGTTCCGCAATGTGACCTCCCCGAGTTCTGCACCGGC  
 AAGTCTCCCCACTGCCCACTAATTATCAGATGGATGGCACCCTGCGAGGGTGGCCAGGCTACT  
 GCTACAACGGCATGTGCCTCACTTACCAGGAACAGTGCACAGCTGTGGGACCTGGAGCCCGGCTGC  
 CCTCGATCTTTGCTTTGAGAGGGTGAATGCTGCTGGTGCACCTATGAAACTGTGGCAAGGGCTGAAT  
 GGCAATACAGGAAGTGCAGTCCAGGGATGCCAAGTGTGGGAAGATTAGTGCAGAGCACCCAGGCC  
 GGCCCTTGAATCCAACGCAGTATCTATTGACACCACCATCACCTTGAACGGGAGGCGGATCCACTGTCTG  
 GGGCACCCACGTCTACCGGGTCTGAGGAGGAGGAAGGGGAAGGTGACATGCTGGACCCAGGGCTGGT  
 ATGACTGGAACCAAGTGTGGCCACAACCATATTTGCTTCGAGGGGAGTGCAGGAACACCTCCTTCTTTG  
 AGACGGAAGGCTGTGGGAAAAAGTGAATGGCCACGGGTCTGCAACAACAAGAAGTGTATTGCTT  
 CCCTGGCTGGTCTCCACCTTTCTGTAACACCCCGGAGATGGTGGCAGCGTCGACAGTGGTCTTTGCC  
 CCTAAGAGTGTGGTCCCGTGTATCGTGGGGTGTTCAGCTCTTTCGTGTTGGCAGTTCTGGTGTAC  
 TGTGCTACTGCTACAGACAGAGCCAAAACCTGGGCAACCCTCGGCTCTCCCTTTCAAGCTGCGGCATCA  
 GTTCAGTTGTCCCTTTCAGGGTATCTCAGAGTGGTGGAACTGGCCATGCCAACCAACTTTCAAGTTGCAG  
 ACCCCCCAGGGCAAGCGAAAGGTGACTAACACCCCTGAATCCCTCCGGAAGCCGTCCACCCCCCTCCCC  
 GGCCCCCTCCAGACTACCTGCGGTTGAATCGCCACCTGCACCATTGCCGACATCTGAACAGGGCTGC  
 TGGGAGCTCCCCAGAAGCTGGGGCTCGAATAGAAAAGAAAGGAGTCAAGGAGGAGGCTCCCCAAGCCGA  
 CCCATGCCCTGCACCTAACTGCCTACTGTCCCAGGACTTCTCCAGGCTCGACCACCTCAGAAGGCAC  
 TCCCAGCAATCCGGTGCAGGCCAAAGGACCGGTCCCAGGTCAAGGAGCACCTCCCTGCTTACGCCCC  
 TACTTCTGGTCTCAGCCCCCAGGCTCCAGCAGTGCCTGTTCCAAAGTACCCGAGTACCGATCACAG  
 AGGTTGGAGCAATAATTAGCTCAAGATC

**ACGCGT**ACGCGGCCGCTCGAGCAGAAACTCATCTCAGAAGAGGATCTGGCAGCAAATGATATCCTGGATT  
 ACAAGGATGACGACGATTAAGTTTAA

**Protein Sequence:** >MR222929 representing NM\_009616  
 Red=Cloning site Green=Tags(s)

```

MPGRAGVARFCLLALALQLHWPLAACPEGWTRGSQEGSPPLQHELIIPQWRTSESPGRGKHLRAELRV
MAEGRELILDLEKNEHLFAPAYTETCYTASGNPQTSTLKSEDHCFYHGTVRDVEDSSVTLSTCRGIRGLI
IVRNLNLSYIIIEPVPNSDSQHRIYRSEHLTLPNGCGFEHSGPTSKDWALQFTHQTKKQPRRMKREDLHSM
KYVELYLVDYAEFQKNRHDQDATKRKLMEIANVYDKFYRSLNIRIALVGLVWTHGDKCEVSENPYSTL
WSFLSWRRKLLAQKSHDNAQLITGRSFQGTIGLAPLMAMCSVYQSGGVSMDHSENAIGVASTVAHEIGH
NFGMSHDSAHCCSASAADGGCMAAATGHPFKVFSWCNRKELDRYLQTGGMCLSNMPDTRTLYGRRRC
NGYLEDGEECDGEEEECKNPCNASNCTLKEGAECAHSGCCHQCKLVAPGTQCREQVRQCDLPEFCTG
KSPHCPTNYYQMDGTPCEGGQAYCYNGMCLTYQECCQLWGPARGPALDLCFERVNAAGDTYGNCGKGLN
GQYRKCSPRDAKCGKIQCQSTQARPLESNAVSIDTTITLNGRIHCRGTHVYRGPPEEEEGEDMLDPGLV
MTGKTCGHNHICFEGQCRNTSFETEGCGKKNHGVCNKNKCHCFPGWSPFCNTPGDGGSVDSGPLP
PKSVGPVIAGVFSALFVLAVLVLLCHCYRQSHKLGKPSALPFKLRHQFSCPFVRSQSGGTGHANPTFKLQ
TPQGRKVTNTPESLRKP SHPPRPPDYLRVESPPAPLPAHLNRAAGSSPEAGARIERKESARRPPPSR
PMPAPNCLLSQDFSRPRPPQKALPANVPVPGQRTGPRSGTSLLPPTSGPQPPRPPAVPVKLPYRSQ
RVGAISSKI
  
```

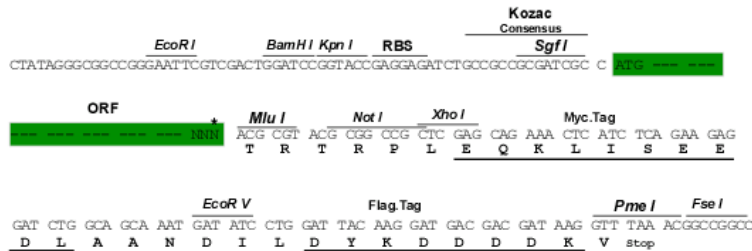
TRTRPLEQKLISEEDLAANDILDYKDDDDKV

**Chromatograms:** [https://cdn.origene.com/chromatograms/mm9003\\_a08.zip](https://cdn.origene.com/chromatograms/mm9003_a08.zip)

**Restriction Sites:** SgfI-MluI

**Cloning Scheme:**

Cloning sites used for ORF Shuttling:



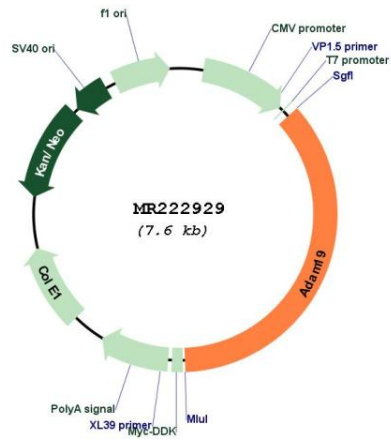
\* The last codon before the Stop codon of the ORF

**ACCN:** NM\_009616

**ORF Size:** 2760 bp

<b>OTI Disclaimer:</b>	The molecular sequence of this clone aligns with the gene accession number as a point of reference only. However, individual transcript sequences of the same gene can differ through naturally occurring variations (e.g. polymorphisms), each with its own valid existence. This clone is substantially in agreement with the reference, but a complete review of all prevailing variants is recommended prior to use. <a href="#">More info</a>
<b>OTI Annotation:</b>	This clone was engineered to express the complete ORF with an expression tag. Expression varies depending on the nature of the gene.
<b>Components:</b>	The ORF clone is ion-exchange column purified and shipped in a 2D barcoded Matrix tube containing 10ug of transfection-ready, dried plasmid DNA (reconstitute with 100 ul of water).
<b>Reconstitution Method:</b>	<ol style="list-style-type: none"><li>1. Centrifuge at 5,000xg for 5min.</li><li>2. Carefully open the tube and add 100ul of sterile water to dissolve the DNA.</li><li>3. Close the tube and incubate for 10 minutes at room temperature.</li><li>4. Briefly vortex the tube and then do a quick spin (less than 5000xg) to concentrate the liquid at the bottom.</li><li>5. Store the suspended plasmid at -20°C. The DNA is stable for at least one year from date of shipping when stored at -20°C.</li></ol>
<b>RefSeq:</b>	<a href="#">NM_009616.4</a> , <a href="#">NP_033746.1</a>
<b>RefSeq Size:</b>	6388 bp
<b>RefSeq ORF:</b>	2763 bp
<b>Locus ID:</b>	11492
<b>UniProt ID:</b>	<a href="#">O35674</a>
<b>Cytogenetics:</b>	11 27.54 cM
<b>MW:</b>	101.3 kDa
<b>Gene Summary:</b>	This gene encodes a cell surface glycoprotein and member of the ADAM (a disintegrin and metalloproteinase) family of endopeptidases. The encoded protein may play a role in the ectodomain shedding of neuregulin proteins. Homozygous knockout mice for this gene exhibit heart development defects and perinatal lethality. Alternative splicing results in multiple transcript variants, at least one of which encodes a preproprotein that undergoes proteolytic processing to generate a mature protein product. [provided by RefSeq, Aug 2015]

Product images:



Circular map for MR222929