

## Product datasheet for MR222922

### Wnt8b (NM\_011720) Mouse Tagged ORF Clone

#### Product data:

Product Type:	Expression Plasmids
Product Name:	Wnt8b (NM_011720) Mouse Tagged ORF Clone
Tag:	Myc-DDK
Symbol:	Wnt8b
Mammalian Cell Selection:	Neomycin
Vector:	pCMV6-Entry (PS100001)
E. coli Selection:	Kanamycin (25 ug/mL)
ORF Nucleotide Sequence:	>MR222922 representing NM_011720 Red=Cloning site Blue=ORF Green=Tags(s)

TTTTGTAATACGACTCACTATAGGGCGGCCGGAATTCGTCGACTGGATCCGGTACCGAGGAGATCTGCC  
GCC**CGATCGCC**

ATGCTTCCCATCTCTCAATGTTTGAGTCGCTCACCTGCCTTTCTCCGAAGACCATGTTTCTTATGAAGC  
CCGTGTGCGTTCTTCTAGTCACTTGTGTCTTCACCGCAGCCACGCTGGTCAGTGAACAATTTCTGAT  
GACCGGTCCAAAGGCTTACCTGGTCTACTCCAGCAGCGTGGCCGCTGGCGCCAGAGTGGTATTGAAGAA  
TGTAATAACAGTTTGTCTGGGACCGTTGGAATTGCCCGAGAGAGCTTTACAGCTGTCCAGCCATGGTG  
GACTTCGAAGCGTAACCGGGAGACAGCATTTGTGCACGCCATCAGCTCTGCTGGGTTATGTACACCCT  
GACTAGAACTGCAGCCTCGGAGACTTTGACAACGTGGCTGTGATGACTCCCGAAATGGACAACCTGGGG  
GGCCAAGTTGGCTCTGGGGAGGCTGCAGTGACAACGTGGCTTCGGAGAGGCAATTTCCAAGCAGTTTG  
TGGATGCCCTCGAGACAGGACAAGATGCCCGGGCAGCCATGAATCTGCACAACAATGAGGCTGGCCGCAA  
GGCGGTCAAGGGCACCATGAAACGCACGTGTAAGTGCCACGGTGTGTCCGGCAGCTGCACCACGCAGACC  
TGCTGGTTGCAACTGCCAGAGTCCGGGAGGTAGGCGCGCACTTGAAGGAGAAGTATCATGCGGCGCTCA  
AGGTGGACCTGCTGCAAGGCGGGCAACAGCGCGGGCGCCGCGGAGCCATCGCCGACACCTTCCGCTC  
CATCTCCACCCGCGAGCTGGTGCATCTGGAGACTCCCCAGACTACTGCCTGGAGAACAAGACCCTGGGG  
CTGCTGGGCACCGAGGGCCGAGAGTGTCTGCGGCGGGGCGCCCTGGGTCGCTGGGAGCGCCGAGTT  
GTCGCCGCTGTGCGGGGACTGCGGGCTAGCGGTGGAGGAGCGCCGCGCCGAGACAGTGTCCAGCTGCAA  
CTGCAAGTTTCACTGGTGTGCGCGG[AT]CCGCTGCGAGCAGTCCCGCCGGCGGGTACCAAGTACTTC  
TGACGCCGCGCAGAGCGGCCGCCAGAGGCGCTGCGCACAACCGGGAAAGAACTCC

**ACGCGT**ACGCGGCCGCTCGAGCAGAACTCATCTCAGAAGAGGATCTGGCAGCAAATGATATCCTGGATT  
ACAAGGATGACGACGATAAGGTTTAA



[View online »](#)

**Protein Sequence:** >MR222922 representing NM\_011720  
Red=Cloning site Green=Tags(s)

MLPISQCLSRPCLSPKTMFLMKPVCVLLVTCVLRSHAWSVNNFLMTGPKAYLVYSSSVAAGAQSGIEE  
 CKYQFAWDRWNCPERALQLSSHGGLRSANREAFVHAISSAGVMYTLTRNCSLGDFDNCGDDSRNGQLG  
 GQGWLWGGCSDNVGFGEAISQKQFVDALETGQDARAAMNLHNNEAGRKAVKGTMKRTCKCHGVSGSCTTQT  
 CWLQLPEFREVGAHLKEKYHAALKVDLLQGAGNSAAGRGAIAIDTFRSISTRELVHLEDSPDYCLENKTLG  
 LLGTEGRECLRRGRALGRWERRSCRRLCGDCGLAVEERRAETVSSCNCKFWCCAXXRCEQRRRVTKYF  
 CSRAERPPRGAHHPGKNS

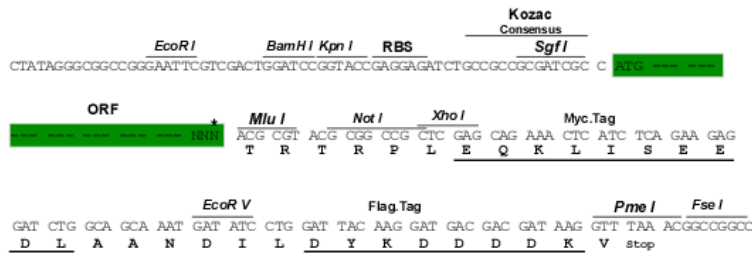
TRTRPLEQKLISEEDLAANDILDYKDDDDKV

**Chromatograms:** [https://cdn.origene.com/chromatograms/mm9007\\_d12.zip](https://cdn.origene.com/chromatograms/mm9007_d12.zip)

**Restriction Sites:** SgfI-MluI

**Cloning Scheme:**

Cloning sites used for ORF Shuttling:



\* The last codon before the Stop codon of the ORF

**ACCN:** NM\_011720

**ORF Size:** 1107 bp

**OTI Disclaimer:** The molecular sequence of this clone aligns with the gene accession number as a point of reference only. However, individual transcript sequences of the same gene can differ through naturally occurring variations (e.g. polymorphisms), each with its own valid existence. This clone is substantially in agreement with the reference, but a complete review of all prevailing variants is recommended prior to use. [More info](#)

**OTI Annotation:** This clone was engineered to express the complete ORF with an expression tag. Expression varies depending on the nature of the gene.

**Components:** The ORF clone is ion-exchange column purified and shipped in a 2D barcoded Matrix tube containing 10ug of transfection-ready, dried plasmid DNA (reconstitute with 100 ul of water).

- Reconstitution Method:**
1. Centrifuge at 5,000xg for 5min.
  2. Carefully open the tube and add 100ul of sterile water to dissolve the DNA.
  3. Close the tube and incubate for 10 minutes at room temperature.
  4. Briefly vortex the tube and then do a quick spin (less than 5000xg) to concentrate the liquid at the bottom.
  5. Store the suspended plasmid at -20°C. The DNA is stable for at least one year from date of shipping when stored at -20°C.

**RefSeq:** NM\_011720.3, NP\_035850.2

**RefSeq Size:** 3376 bp

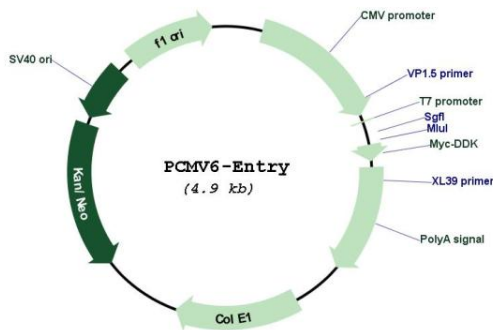
**RefSeq ORF:** 1107 bp

**Locus ID:** 22423

**Cytogenetics:** 19 37.98 cM

**MW:** 41 kDa

**Product images:**



Circular map for MR222922