

Product datasheet for **MR222780**

Adam22 (NM_001098225) Mouse Tagged ORF Clone

Product data:

Product Type:	Expression Plasmids
Product Name:	Adam22 (NM_001098225) Mouse Tagged ORF Clone
Tag:	Myc-DDK
Symbol:	Adam22
Synonyms:	2900022I03Rik; AI854032; MDC2
Mammalian Cell Selection:	Neomycin
Vector:	pCMV6-Entry (PS100001)
E. coli Selection:	Kanamycin (25 ug/mL)



[View online »](#)

ORF Nucleotide Sequence:

>MR222780 representing NM_001098225
 Red=Cloning site Blue=ORF Green=Tags(s)

CTATAGGGCGGCCGGAATTCGTGCGACTGGATCCGGTACCGAGGAGATCTGCC
 GCC**CGGATCGCC**

ATGCAGGCAGCGCGGCCGCTCTTCTGGCTGCTCTGCGTCTTGGGACCTGCCCCCTGGCGCGCTGCG
 GTCGGGCAGGAGTCGCCTCACTGAAAGGACTGGAGAGGGGAAAGAAAACCGCTTCTGGAGCGCCAGAG
 CATCATACCACTGCGCCTCATCTATCGCTTGGCGGCGAGGATGAACTCAGCACAAACGCTCGACACG
 CGGGTGCGGGGCACCCTGGCGGACCGCAGCTGACGCATGTGGACAAGGCAAGCTTCCGGGTGGACGCT
 TTGGAACCTCTTTCGTTCTCGACGTCCTGCTGAACCACGAGTTGCTGTCGTCAGGTTATGTAGAGAGACA
 GATTGAACATGGAGGCAAGGTCGTGGAGAACAAGGAGGAGAACAAGTATTACCAGGGCCAGATTGCA
 GGAACCCCTGTCTCATTGTTGCCCTATCAACATGCCATGGACTCCATGGGATGTTCTATGATGGAACCC
 ACACATATCTCATTGAGCCAGAAGAAAATGAGAAGTCTCAAGAGTCGTCTCATTGCTACTCCGTGTACAA
 ATCCAGACAGTTTGAATTTCCCTTGGATGACCTTCCGTCTGAATTTCAACGCGTAAACATTACTCCCCT
 CAGTTTATTTTGAAGCCAAGACTAAAGAGGAGAAAAGACAGCTTCTTCGATTTCCCTCGGAATGTAGAGG
 AGGAAACCAAATACATCGAACTGATGATTGTGAATGATCATCTCATGTTTAAAAAGCACCGGCTTTCTGT
 TGTATATACTAATACCTATGCGAAGTCTGTGGTGAACATGGCAGATGTGATCTATAAAGACCAACTGAAA
 ACTAGGATTGTATTGGTTGCCATGGAAACCTGGGCTGCTGACAACAAGTTTGCCATATCTGAAAACCCAC
 TGATTACCCTTCGTGAGTTCATGAAATACAGGAGGGATTTTATCAAGGAGAAGGCTGATGCGATTCATCT
 TTTCTCGGCAGTCAATTTGAGAGTAGCCGGAGCGGGCAGCTTATATTGGTGGGATTTGCTCGCTGCTG
 AGAGGAGGAGCGTGAATGAATTTGGAAAAACGGATTTAATGGCAGTTACCCTCGCTCAGTCACTAGCCC
 ACAATGTCCGTATAATCTCTGACAAAAGAAAACCTAGCAAGTGGTGAAGTAAATGTGAGGACACCTGGTC
 CGGGTGCATAATGGGAGACACCGGCTACTATCTCCGAAAAAGTTCACTCAGTGCAATGTCGAGGAATAT
 CATGACTTCTGAATAGTGGTGGAGGTGCCTGCCTGTTCAACAAGCCTTCCAAGCTTCTTGATCCTCCTG
 AGTGTGAAAACGGCTTCAATGAAACCGGAGAGGAGTGTGATTGTGGCACCCCTGCAGAATGTGCCCTTGA
 AGGGGCAGAGTGTGTAAGAAATGCACCTTGACCCAGGATTCTCAATGCAGTGTGGCCTTTGTTGTA
 AAGTGAAGTTTCAGCCTCTGGGACCGTGTGCCGAGAGGCAGTGAACGACTGTGACATTCGTGAAATAT
 GTTCAGGAAATTCAGCCAGTGTGCCCAATGTGCATAAAATGGATGGATATTCGTGTGATGGTACTCA
 GGAATTTGCTTTGGAGGAAGATGTAACCAGAGATAGACAATGCAAAATACATCTGGGGGCAAAAGGTA
 ACAGCATCTGACAGGTAAGTGTATGAGAACTGAACATTTAGGGGACGGAGAAGGTAACGTGGGAAAG
 ACAAGGACACGTGGACACAGTGCACAAACGGGATGACTTTGTGGTTACCTCCTGTGCACAAACATTGG
 CAACATCCCAAGGCTCGGGGAGCTTGTGGTGGAGATCACATCCACATTAGTTGTGCGAGCAAGGAAGAACA
 TAAACTGCAGTGGCGCGCATGTTAAACTTGAAGAAGATGTGGATCTTGGCTATGTGGAAGATGGGACGC
 CCTGTGGCCCTCAGATGATGTGCTTGGAAACACAGGTGTCTTCTGTGGCTTCTTCAACTCAGTACTTG
 CTCCAGCAGTAAAGCAGGCACCGTGTGCTCAGGAAATGGAGTTTGCAGCAATGAGCTCAAGTGTGTGTGC
 AACAGGCACTGGACAGGGGCTGACTGCGGCACCCACTTCTCACAATGATGATGCAAAGACTGGCATCA
 CCCTGTCTGGCAATGGTGTGCTGGCACTAATATCATAATAGGAATAATTGCCGGCACCATTTTATGTCT
 GGCCCTCATCTTAGGAATAACTGCCTGGGTTATAAAAACTACCGAGAACAGAGGTCAAAATGGACTCTCT
 CATTCTTGGAGTAAAGGATTCCAGACACAAAACATATTTAGACATCTGTGAAAATGGGAGACCTCGCA
 GTAACCTCTGGCAAGGTAACATGGGAGGCAACAAAAGAAAATCAGAGGAAAAGATTTAGACCTCGATC
 TAACTCAACTGAGACCCTGTACCTGCCAAGTCTCCTTCTTATCAACTGGGTCTATTGCCTCCAGCAGA
 AAATACCCGTACCCTATGCCTCCGCTTCCAGACGAGGGGAAGACAGCGGGCCGACAGAGCGCCAGGCTAT
 GGGAGACATCCATT

**CTCGAGCAGAAACTCATCTCAGAAGAGGATCTGGCAGCAATGATATCCTGGATTACAAGGATGACGACG
 ATAAGGTTTAA**

Protein Sequence: >MR222780 representing NM_001098225
 Red=Cloning site Green=Tags(s)

```

MQAAAAASFWLLCVLGTCLARCGRAGVASLKGLERKGNRFLERQSIIPRLIYRLGGEDETQHNQLDT
RVRGDPGGPQLTHVDKASFRVDAFGTSFVLDVLLNHELLSSGYVERQIEHGGKVVENKGGEGHCYYQGQIR
GNPVSFVALSTCHGLHGMFYDGNHTYLIEPEENEKSQESSHCHSVYKSRQFEFPLDDLPSEFQRVNITPP
QFILKPRLKRRKRQLLRFPRNVEEETKYIELMI VNDHLMFKKHRLSVVYNTYAKSVVNMADV IYKDQLK
TRIVLVAMETWAADNKFAISENPLITLREFMKYRRDFIKEKADAVHLFSGSQFESSRSGAAYIGGICSL
RGGGVNEFGKTDLMAVTLAQSLAHNVGII SDKRKLASGECKCEDTWSGCIMGDTGYLPPKFTQCNVEEY
HDFLNSGGGA CLFNKPSKLLDPPECNGFIETGEECDGTPAECALGAECCKKCTLTQDSQCS DGLCCK
KCKFQPLGTVCREAVNDCDIREICSGNSSQCAPNVHKMDGYSCDGTGGICFGRCKTRDRQCKYI WQKV
TASDRYCYEKLNI EGTEKGNCGKDKDTWTQCNKRDVLCGYLLCTNIGNIPRLGELDGEITSTLVVQQGRT
LNC SGAHVKLEEDVDLGYVEDGTPCGPQMMCLEHRCLPVASFNFSTCSSSKAGTVCSNGVCSNELKVCV
NRHWTGADCGTHFPHNDDAKTGITLSGNGVAGTNI IIGIIAGTILVLALILGITAWGYKNYREQRSNGLS
HSWSERIPDTHI SDICENGRPRSNSWQGNMGGNKKKIRGKFRPRSNSTETLSPAKSPSSSTGSIASSR
KYPYMPPLPDEGKTAGRQSARLWETSI
  
```

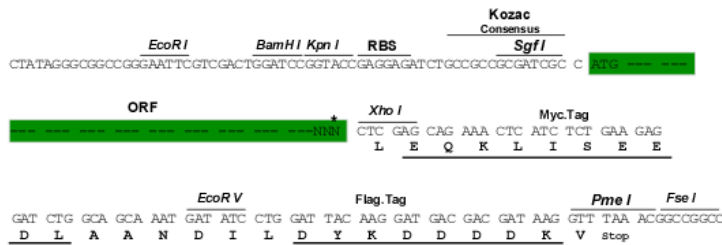
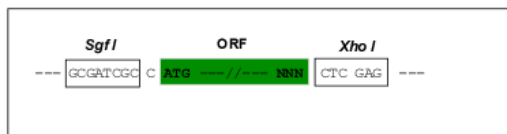
LEQKLISEEDLAANDILDYKDDDDKV

Chromatograms: https://cdn.origene.com/chromatograms/mm9003_e06.zip

Restriction Sites: SgfI-XhoI

Cloning Scheme:

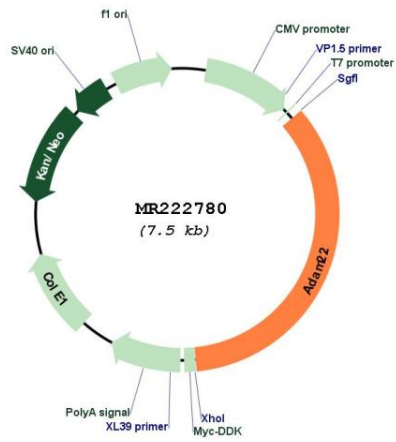
Cloning sites used for ORF Shuttling:



* The last codon before the Stop codon of the ORF

ACCN:	NM_001098225
ORF Size:	2604 bp
OTI Disclaimer:	The molecular sequence of this clone aligns with the gene accession number as a point of reference only. However, individual transcript sequences of the same gene can differ through naturally occurring variations (e.g. polymorphisms), each with its own valid existence. This clone is substantially in agreement with the reference, but a complete review of all prevailing variants is recommended prior to use. More info
OTI Annotation:	This clone was engineered to express the complete ORF with an expression tag. Expression varies depending on the nature of the gene.
Components:	The ORF clone is ion-exchange column purified and shipped in a 2D barcoded Matrix tube containing 10ug of transfection-ready, dried plasmid DNA (reconstitute with 100 ul of water).
Reconstitution Method:	<ol style="list-style-type: none">1. Centrifuge at 5,000xg for 5min.2. Carefully open the tube and add 100ul of sterile water to dissolve the DNA.3. Close the tube and incubate for 10 minutes at room temperature.4. Briefly vortex the tube and then do a quick spin (less than 5000xg) to concentrate the liquid at the bottom.5. Store the suspended plasmid at -20°C. The DNA is stable for at least one year from date of shipping when stored at -20°C.
RefSeq:	NM_001098225.2 , NP_001091695.1
RefSeq Size:	9068 bp
RefSeq ORF:	2607 bp
Locus ID:	11496
UniProt ID:	Q9R1V6
Cytogenetics:	5 3.39 cM
MW:	96.4 kDa
Gene Summary:	This gene encodes a member of a disintegrin and metalloprotease (ADAM) family of endoproteases that play important roles in various biological processes including cell signaling, adhesion and migration. The encoded preproprotein undergoes proteolytic processing to generate a mature, functional protein. The protein encoded by this gene is believed to lack metalloproteinase activity due to the lack of a critical catalytic motif. Mice lacking the encoded protein exhibit severe ataxia, hypomyelination and premature death. Alternative splicing results in multiple transcript variants encoding different isoforms, some of which may undergo similar processing. [provided by RefSeq, May 2016]

Product images:



Circular map for MR222780