

Product datasheet for MR222744

Dennd4c (NM_001081014) Mouse Tagged ORF Clone

Product data:

Product Type:	Expression Plasmids
Product Name:	Dennd4c (NM_001081014) Mouse Tagged ORF Clone
Tag:	Myc-DDK
Symbol:	Dennd4c
Synonyms:	1700065A05Rik; AA420392; RP24-468M3.1
Vector:	pCMV6-Entry (PS100001)
E. coli Selection:	Kanamycin (25 ug/mL)
Cell Selection:	Neomycin
ORF Nucleotide Sequence:	>MR222744 representing NM_001081014 Red=Cloning site Blue=ORF Green=Tags(s)

TTTTGTAATACGACTCACTATAGGGCGCCGGAATTCGTCGACTGGATCCGGTACCGAGGAGATCTGCC
GCC**CGATCGCC**

ATGATAGAAGACAAGGACCTAGAGTGACAGACTACTTCGTTGTGGCAGGTCTCACTGATACATCCACTC
TTTTGGATCAAGAAATAAATCGTACAGATACTAACTCGATTGGTCTAAAGCTCCAATCACAGACATTGC
TGTTATTATCAAATCAGCTGGGAAACTGTACCTGAAGGCTACACCTGTGTGGAAGCCACTCCATCAGCA
CTCCAAGCAAACCTGAATTATGGAAGTCTGAAGAGCCAGAGCTTTTCCTGTGCTACAGGAGAGGGAGAG
ATAAGCCGCCCTTACAGATATTGGCGTCTATATGAAGGAAAGAAAGGCTTATGCCAGGATGTGAAGT
GATCCAAGCCACGCCGTACGGCCGCTGTGCCAATGTCAACAATAGTTCAACTACTTCTCAAAGAATCTTT
ATCACCTATCGAAGGGCTCCCCAGTGGCTGCCAAGATTCCTTGGCCGCTCACTGATATCTGTGTTATTA
TAACCAAGTAAAGGAGAAACCCCTCCGCATACTTTCTGCAAAGTGGATAAAAAATTAACCTGTGGCATGTG
GGGTTCCAACGTGTTTCTGTGTTACAAGAAGTCTGTGCCTGCTTCAAATGCAATAGCATATAAGGCTGGT
TTGATTTTTCGATATCCGAAGAAGACTATGAGTCTTTCCGCTCTCACCATCTGTGCCTCTTTCTGCC
TTCTATGGGAGCCACTATTGAATGCTGGGATCCTCAAATCAAATACCCACTTCTGTTTTCTCAACAT
TGTCTTGACAGGGTCTTACGCTGAAAAGGTATATGGAGCTGCCATCCAGTTTTATGAACCTTACTCTCAA
GAACGTCTAACAGAGAAACAACCTTACACAGCTGGGCTATTGACCCTCGTGGAGAAAAGAGTGGTCTCCA
AACCCATCAATCAAACAAGTGCATTTGTTGCTTTACACTGGCCTTTTTTTGAAGCTTTTAAGAATTT
TCTTATGTTTATCTACAAAGTTTCTGTGCTGGACCACATCCTCTTCCCATTGAAAAGCACATTTACAT
TTTATGAAAATATCCCTTTTCTTACCACAAAGACCAAGAATCCTCATCCAGCTATCAGTCCATGATG
CATTTATATTATCACAGCCAGTGTCCACACCTTACCATTAAGTGGCGCAACTTTAGCTCCTTGCTGAT
GAATCTGGGTCTGAGAACTGCGGACATTGCTGCTGCTGGTTTTGCTCGAGAGTAAGATTCTGCTGCAC
TCTCTGAGGCCAGCGTACTAACTGGGGTAGCCGAAGCTGCTGTTGCTATGATCTTTCCATTTCACTGGC
AGTGCCCATATATCCCCCTCTGTCTTTTCATTGGCTGGAGTGCTTAGTGCGCCTTTACATTTATAGT
TGGAGTGGACTCAAGTACTTTGATCTTCATGACCCACCAAGATGTTGTCTGCATTGACTTGGATACG
AACACATTATATGTAGCTGATGAAAGAAAGAACAATAAACTGGAAGCAGCTTCCAAAAGGCCGTGCAAGA



View online »

GTCTGCTTGGCACCCTGAGGAGGCTGTATCAGCAGCTCTGCTCAGTTCACCGAAAACCTCAAGAAAGTTC
 AGCAATTGAGATGACTCCAATTGAAGCAGATTACTCTTGGCAAAAAAGATGACACAATTGGAGATGGAA
 ATTCAGGAGACATTTTTGCGATTTATGGCGTCTATTTTAAAAGGGTACAGGTCATATCTCAGACCAATCA
 CAGAAGCTCCTTCTAATAAAGCCACAGCTGCGGATTCATTGTTTATCGTTCATTGAAGAA
 GGATCGTGCCATACAAAATTCTATACTCTTTATCCAAAACACAGATTTTTATCGTTCATTGAAGAA
 TGCAGTTTTGTAAGTGATAAAGATACTGGATTGGCATTTTTTGATGATTGCATCGAGAAGTTGTTCCAG
 ATAAAGGTGTAGAGAGAACAGAAAAGTTGACTGGATTGAGCAGAGAAGACACCAGATTGATAGAGCTAGA
 TGATTCACAGAGAAGTGAACACACTGTATTTAATGCCACCTGAGCCGCTCCTGATGATGAAAATAAC
 TTATCACCTCAGTACAGTTACACATACTTTCCAAGATTGGATCTTAAGCTTTTTGACAGCCACAGAAGC
 TGAAACTGTGCTCAATAGACATCCTCCTGGGAGTAGCATTACAAACAGCCCTGCCCTCATGGCTAAAAG
 GACTAAACAGGAGATAAAAAACAGCTCATAAGTTGGCGAAGAGATGTTATACGAATCCACCACAATGGGCC
 AAGTATCTATTCAGCCACTGTTACAGTCTGTGGTTTTATTGTCTCCAGCCTATGTTAGAGTTTCTCACC
 CTAAGGTCGAGCACTCCAGCAGGCACATGATGTGCTTGAAGATGCGGAAGACAGACGTGGATCCACT
 AGATGAGGTGTGCTATCGAGTAGTCATGCAGCTTTGTGGACTTTGGGTTAATCCTGTTTTAGCAGTGAGA
 GTCTTATTCGAGATGAAAAGTCTAGAATAAAACCAAATGCTATCACTTATGGCTATTACAATAAGTAG
 TTTTGGAGAGCCCATGGCCAGCAGTACTCGCAGTGGTATTTCTTGTGGACGAAAAGTACCGAATGTTGT
 ACATGGTTTGGCCAGTTTAGGCAACCCTTAAAAAGACTGGGCAAAAATCACAGGTCTTTTCAATATCA
 GCTCCTCAGAATGCTGCATGTGGAAGTGATGGGGACACAGTGAGCCATGGTAGTGTGGATAGTTCTAACG
 ATGCTAACAAATGGGGAGCACACAGTCTTCGTCAGAGACTTAATCAGCCTTGATCCATTGATAATCACTC
 TAGCACAGGCGGTGAGTCTGACCAGGGCTACGGGTCTAAGGATGAGCTGGTAAAGGAGGGTGCAGATGGT
 CACGCCCTGAAGAGCACAGCCACCAGAGCTGACGACCACAGAGCTGCACATCGAAGAGGAGTGTGATA
 TATCTGCCATTGTCTCAAAACACCTGCAGCCTACTCCTGAACCTCAGAGTCTACGGAGCCTCCTGCATG
 GGGCAGCAGTATTGTGAAAGTTCATCTGGGTTATTTGATACCAACAATAGGACAAGTATGGTAGTACT
 TCAACTGTGCTATTTTCTACTCAAGCTCCAGTCCAGGATGCAGTCTTCAGTGAGGTTACTAATTTCAAGA
 AGAATGGTGATAGAGGAGAGAAAAACAGAAGCATTTCCTGAGAGGAGCTGTAGCTTTAGTTCTGAAAAG
 TCGAGCGGGGATGCTGCTTAAGAAGAGCAGTTTGGACCTGAATTCAGCGAAAATGGCCATCATGATGGGA
 GCAGATGCCAAGATCCTCACAGCAGCACTGACATGTCCTAAGACTTCCCCGCTCATGTCACAAGAACTC
 ACAGCTTTGAGAATGTTAACTGTCATCTAGCTGACAGTAGGACTCGCATGTCAGAAGGCACCCGGGATTC
 TGAGCACAGATCATCTCCTGTGCTAGAGATGCTGGAGGAAAGCCAGGAGCTCCTGGAGCCTGTGGTTGGT
 GATAATGTGGCAGAGACTGCGGCAGAGATGACGTGTAACAGTCTACAAAGTAACAGTACAGTGACCAGT
 CCAGAGACACACAAGCTGGAGCCCAAGATCCAGTGAACAAGAGGAGCAGTTCATATGCTACTAGGAAAGC
 CATTGAGAGGGAGGATGTGGAGACGGGACTAGATCCGTTGTCTTTTAGCCACTGAATGTGTAGAAAAA
 ACGTCTGATTCTGAAGATAAGTTATTTTCTCCAGTAATTTACGTAATCTGGCTGATGAAATTGAAAGTT
 ACATGAACCTAAAAAGCCCACTAGGCGAGTAAATCTTGTAGTATGGAATTGCATGGAGAGGGGAACCAGGA
 GCCTGGCTCTCCTGCTGTGTTTGTCCACCTTTAGAAAGGAGCTCGAGTCTGCCTTCAGACCGTGGCCCG
 CCAGCACGAGACAGCACCAGACTGAGAAGAGCTCCCCTGCTGTGTCCAGCTCTAAAACCTGACTGGGC
 GTTTCAGCCACAGAGTCTTACCGCGTTACAAAGACCGGTCCACTTCTTATCAGCATTAGTACGTTT
 TTCACCAACAGCTCTCTGGGTTCTGTAGTCAATCTCTATCGGGGCTAAAGTTGGACAATATACTCTCA
 GGGCCCAAGATAGATGTCTAAAATCTAGTATGAAACAAGCAGCAACGGTGGCCAGTAAGATGTGGGTGG
 CTGTAGCATCTGCCTATAGCTACTCAGATGACGAGGAGGAACTAATAAAGATTACAGTTTCCCAGCTGG
 CCTAGAAGACCATCATATAGTGGGAGAGACTCTGTGCTTAAACAAGTGTCTCAGGGTTGGTTCCAGT
 GAACTGACCCAGAGCAACACAAGCCTCGGCAGTAGTAGCAGCAGTGGAGACGTTGAAAACTGCAGTGTC
 CAGCAGGTGAAGTTCCATTTTCAAGAAATACAAAGGGCAGGACTTTGAAAAGTCAAGCCATGGTTCTTC
 TCAGAATACCAGTATGTCTAGCATCTATCAAAATGTGCGATGGAGGTTTTGATGTCGAGTTGCTCACAG
 TGCAGAGCTTGTGGCGCTCTGGTTATGATGAGGAAATCATGGCTGGATGGACAGCAGATGACTCAAATT
 TGAATACAACCTGCCGTTCTGTAAAAGCAACTCTTGCCTCTTCTCAATGTAGAATTTAAAGACCTGCC
 AGGCTCTGCCAGTTAGTATTGTGCAAGCTCCCTGGGAGGTGAGTGCCTGAAGACATGGAGAGGGTGG
 CCTCTCCTTTGTCTC

ACGCGTACGCGGCCGCTCGAGCAGAACTCATCTCAGAAGAGGATCTGGCAGCAAATGATATCCTGGATT
 ACAAGGATGACGACGATAAGGTTTAA

Protein Sequence: >MR222744 representing NM_001081014
 Red=Cloning site Green=Tags(s)

MIEDKGRVTDYFVAVGLTDTSTLLDQEINRTDTSIGPKAPITDIAVIKISAGETVPEGYTCVEATPSA
 LQANLNYGSLKSPFLCYRRGRDKPPLTDIGVLYEGKERLMPGCEVIQATPYGRCANVNSSTTSQRIF
 IYRRAPPVRSQNSLAVTDICVITISKGETPPHTFCKVDKNLNCGMWGSNVFLCYKKSVPASNAIAYKAG
 LIFRYPEEDYESFPLSPSVPLFCLPMGATIECWDPQIKYPLPVFSTFVLTGSSAEKVYGAIIQFYEPYSQ
 ERLTEKQLTQLGLLTLVEKRVVSKPINSNKICLLSHWPFPEAFKNFLMFIYKVSVSGPHPLPIEKHISH
 FMQNIPIFPSPQRPRIQLSVHDAFILLSQPVSTPLPLSGANFSLLMNLGPENCATLLLLLVLLESKILLH
 SLRPAVLTVGAEAVVAMIFFPQWQCPYIPLCPLSLAGVLSAPLPFIVGVDSRYFDLHDPQDVCIDLDT
 NTLVYADERKNINWKQLPKRCKSLLGTLRRLYQQLCSVHRKPQESSAIEMTPIEADYSWQKKMTQLEME
 IQETFLLRFMASILKGYRSYLRPITEAPSNKATAADSLFDRQGFLKSRDRAYTKFYTLTKTQIFIRFIEE
 CSFVSDKDTGLAFFDDCIEKLFDPKGVTEKVDLDSAEDTRLIELDDSQRSEHTVFIMPPEPPDDGNN
 LSPQYSYTYFPRLDLKLFDSPQKLLCFNRHPPGSSITNSPALMAKRTKQEIKAHKLAKRCYTNPPQWA
 KYLFSHCYSLWFICLPAYVRVSHPKVRALQQAHDVLVKMRKTDVDPLDEVYRVVMQCLGLWVNPVLA
 VLFEMKTARIKPAITYGYNKVVLESPWPSSTRSGIFLWTKVRNVVHGLAQFRQPLKKTGQKSQVFSIS
 APQNAACGSDGDTVSHGSDSSNDANNGEHTVFVRDLISLDSIDNHSSTGGQSDQGYGSKDELVKEGADG
 HAPPEHTPELTTTELHIEEEDI SAIVSKHLQPTPEPQSPTPEPAWGSSIVKVP SGLFDTNNTSTGST
 STVLFSTQAPVEDAVFSEVTNFKKNDRGEKKQKHFPERSCFSSESERAGMLLKKSSLDLNSSEAIMMG
 ADAKILTAALTCPKTSPPHVTRTHSFENVNCHLADSRTRMSEGRDSEHRSSPVLEMLEESQELLEPPVG
 DNVAETAAMTCNSLQSNHSDQSRDTQAGA QDPVNRSSSYATRKAIEREDVETGLDPLSLLATECVEK
 TSDSEDKLFSPIVSRNLADEIESYMNLSKPLGSKSCSMELHGEQEPGSPAVFAHPLERSSSLPSDRGP
 PARDSTETEKSSPAVSSSKTLTGRFKPQSPYRAYKDRSTLSALVRSSPNSSLGVSNNLSGLKLDNLS
 GPKIDVLKSSMKQAATVASKMWWAVASAYSYSDDDEETNKDYSFPAGLEDHHIVGETLSPNTSVSGLVPS
 ELTQSNTSLGSSSSSGDVGKLQCPAGEVPF SRNKGQDFEKSDHGSSQNTSMSSIQNCAMEVLMSSCSQ
 CRACGALVYDEEIMAGWTADDSNLNTTCPFCKSNFLPLLNVFEKDLRGSARLVLCCLPWEVSALKTRGW
 PLLCL

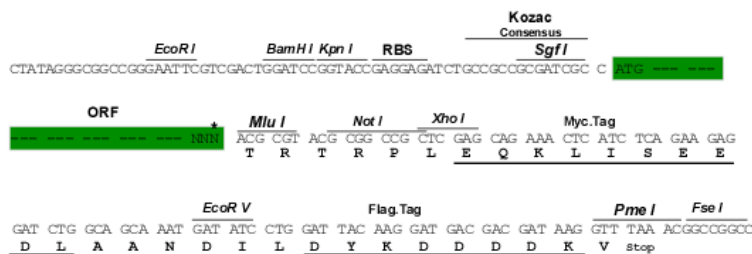
TRTRPLEQKLISEEDLAANDILDYKDDDDKV

Restriction Sites:

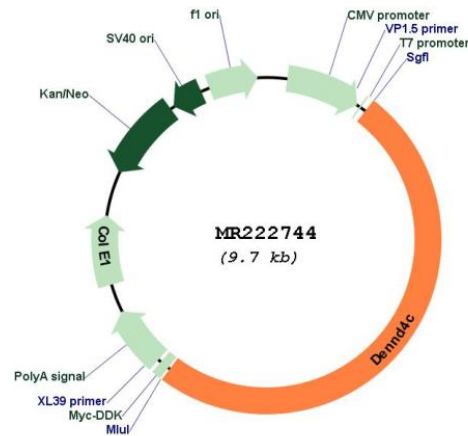
SgfI-MluI

Cloning Scheme:

Cloning sites used for ORF Shuttling:



* The last codon before the Stop codon of the ORF

Plasmid Map:


ACCN: NM_001081014

ORF Size: 4845 bp

OTI Disclaimer: The molecular sequence of this clone aligns with the gene accession number as a point of reference only. However, individual transcript sequences of the same gene can differ through naturally occurring variations (e.g. polymorphisms), each with its own valid existence. This clone is substantially in agreement with the reference, but a complete review of all prevailing variants is recommended prior to use. [More info](#)

OTI Annotation: This clone was engineered to express the complete ORF with an expression tag. Expression varies depending on the nature of the gene.

Components: The ORF clone is ion-exchange column purified and shipped in a 2D barcoded Matrix tube containing 10ug of transfection-ready, dried plasmid DNA (reconstitute with 100 ul of water).

Reconstitution Method:

1. Centrifuge at 5,000xg for 5min.
2. Carefully open the tube and add 100ul of sterile water to dissolve the DNA.
3. Close the tube and incubate for 10 minutes at room temperature.
4. Briefly vortex the tube and then do a quick spin (less than 5000xg) to concentrate the liquid at the bottom.
5. Store the suspended plasmid at -20°C. The DNA is stable for at least one year from date of shipping when stored at -20°C.

RefSeq: [NM_001081014.1](#), [NP_001074483.1](#)

RefSeq Size: 5648 bp

RefSeq ORF: 4848 bp

Locus ID: 329877

Cytogenetics: 4 C4

MW: 207 kDa

Gene Summary: Guanine nucleotide exchange factor (GEF) activating RAB10. Promotes the exchange of GDP to GTP, converting inactive GDP-bound RAB10 into its active GTP-bound form. Thereby, stimulates SLC2A4/GLUT4 glucose transporter-enriched vesicles delivery to the plasma membrane in response to insulin.[UniProtKB/Swiss-Prot Function]