

## Product datasheet for **MR222698**

### Dpp4 (NM\_001159543) Mouse Tagged ORF Clone

#### Product data:

Product Type:	Expression Plasmids
Product Name:	Dpp4 (NM_001159543) Mouse Tagged ORF Clone
Tag:	Myc-DDK
Symbol:	Dpp4
Synonyms:	Cd26; Dpp-4; THAM
Mammalian Cell Selection:	Neomycin
Vector:	pCMV6-Entry (PS100001)
E. coli Selection:	Kanamycin (25 ug/mL)



[View online »](#)

ORF Nucleotide  
Sequence:

>MR222698 representing NM\_001159543  
Red=Cloning site Blue=ORF Green=Tags(s)

TTTTGTAATACGACTCACTATAGGGCGGCCGGAATTCGTCGACTGGATCCGGTACCGAGGAGATCTGCC  
GCC**CGGATCGCC**

ATGAAGACACCGTGAAGGTTCTTCTGGGACTGCTTGGTGTGCGCTGCGCTTGTACCATCATCACCGTGC  
CAATAGTTCTGCTGAGCAAAGATGAAGCGGCAGCTGACAGCCGAGAACGTAATCACTAGCTGACTATTT  
AAAGAGTACCTTTTCGGGTCAAGTCTACTCTTTGTGGTGGGTTTCAGACTTTGAATACCTCTACAAACAA  
GAGAACAATATCTTGCTGCTCAATGCTGAACATGGAAACAGCTCCATTTTCTGGAGAACAGTACCTTTG  
AAAGCTTTGGATATCATTCAAGTGTACCTGACCGACTGTTTGTCTCTTGGAAATACAACACTACGTGAAGCA  
ATGGAGACATTCTACACAGCTTACATAACATTTATGATGTGAATAAAAGACAGCTGATCACAGAAGAG  
AAGATCCAAATAATACACAGTGGATCACATGGTACCAGAAGGTATAAGTTGGCATATGTCTGGAAGA  
ATGATATTTACGTTAAAGTTGAACCACACTTACCTAGTCATAGGATCACATCGACAGGAGAAGAAAATGT  
AATATATAATGGAATAACTGACTGGGTTTATGAAGAGGAAGTCTTCGGTGCCTACTCTGCACTGTGGTGG  
TCTCCAAACAACAGCTTTCTAGCTTATGCCAGTTTAAACGACACAGGAGTGCCGCTCATTGAATACTCCT  
TCTATTCTGATGAGTCACTGCAGTACCCAAAGACAGTGTGGATCCATACCCAAAGGCAGGAGCTGTGAA  
TCCAACGTAAAGTTCTTTATTGTAATAATAGACTCTCTCAGCTCATCTCTAGTGCGGCTCCCATCCAA  
ATCCCTGCTCCTGCATCTGTGGCAAGAGGGGATCACTATTTATGTGATGTGGTGTGGGCTACAGAAGAAA  
GAATTTCACTACAGTGGCTCAGGAGGATTCAGAACTATTCGGTATGGCTATCTGTGACTATGATAAGAT  
CAACCTAACGTGGAACGTCCATCCGAGCAGCAGCATGTTGAAATGAGTACCACAGGCTGGGTCGGAAGA  
TTTAGCCCGCAGAACCTCACTTCACTCTGATGGAAGCAGCTTCTATAAGATCATCAGCGACAAAGATG  
GCTACAAACACATCTGCCACTTCCCGAAAGATAAGAAAGACTGTACATTTATTACAAAAGGAGCCTGGGA  
AGTCATTAGTATCGAAGCTCTGACCAGGATTATCTATACTACATTAGTAACCAATATAAAGAAATGCCA  
GGAGGAAGAAATCTCTATAAAATTCAACTTACTGACCACACAAATGTGAAGTGCCTTAGTTGTGACCTGA  
ATCCAGAAAGATGTCAGTATTATGCGGTATCATTTAGTAAAGAGGCAAAGTACTATCAGCTGGGATGTTG  
GGGCCCGGTCTGCCCTCTACACTCTACATCGTAGCACGGATCATAAAGAGCTGCGAGTCTGGAAGAC  
AATTCTGCTTTGGATAGAATGCTGCAGGATGTCCAGATGCCTTCAAAAAAATTGGACTTCATTGTTTTGA  
ATGAAACAAGATTTTGGTATCAAATGATCTTGCCCTCATTGATAAATCCAAGAAATATCCTCTACT  
ATTAGATGTATATGCAGGTCCTGTAGTCAAAAAGCAGATGCTTCTTCCAGACTGAACTGGGCCACTTAC  
CTTGCAAGTACAGAAAACATCATAGTAGCTAGCTTTGACGCGCAGAGGAAGTGGTTACCAAGGAGATAAGA  
TCATGCATGCAATCAACAGAAGATTGGGAACACTGGAAGTTGAAGATCAAATTGAAGCAGCCAGGCAATT  
TGTA AAAATGGGATTTGTGGATAGCAAGCGAGTTGCAATTTGGGGCTGGT CATATGGAGGTATGTAAAC  
TCAATGGTCTGGGATCGGGAAGTGGCGTGTCAAGTGCAGGAAATAGCTGTGGCACCTGTGTACGGTGGG  
AGTACTATGACTCAGTGTACACAGAGCGTTACATGGGTCTCCCAATCCAGAAGACAACCTTGACCATTA  
CAGGAACCAACAGTCATGAGCAGAGCTGAACATTTTAAACAAGTTGAGTACCTCCTTATTCATGGAACG  
GCAGATGATAATGTTCACTTTACAGCAGTCAGCTCAGATCTCCAAAGCCCTGGTGGATGCTGGTGTGGATT  
TCCAAGCAATGGTATAC

**ACGCGT**ACGCGGCCGCTCGAGCAGAAACTCATCTCAGAAGAGGATCTGGCAGCAAATGATATCCTGGATT  
ACAAGGATGACGACGATAAGGTTTAA

**Protein Sequence:** >MR222698 representing NM\_001159543  
Red=Cloning site Green=Tags(s)

```
MKTPWKVLLGLLGVAALVTIITVPIVLLSKDEAAADSRRTYSLADYLKSTFRVKSYSLWWVSDFEYLYKQ
ENNILLNNAEHGNSSIFLENSTFESFGYHSVSPDRFLVLLLEYNYVQWRHSYTASYNIYDVNKRQLITEE
KIPNNTQWITWSPEGHKLAYVWKNDIYVKVEPHLPSHRITSTGEENVIYNGITDWVYEEVEFGAYSALWW
SPNNTFLAYAQFNDTGVPLIEYFSFYSDESLQYPKTVWIPYKAGAVNPTVKFFIVNIDSLSSSSAAPIQ
IPAPASVARGDHYLCDVVWATEERISLQWLRIQNYSVMAICDYDKINLTWNCPSEQQHVMSTTGWVGR
FRPAEPHFTSDGSSFYKIIISDKDGYKHICHFPKDKKCTFITKGAWEVISIEALTSDYLYYISNQYKEMP
GGRNLYKIQLTDHTNVKCLSCDLNPERCQYYAVSFKEAKYYQLGCWGPGLPLYTLHRSTDHKLRLVLED
NSALDRMLQDVQMPKSKLDFIVLNETRFWYQMILPPHFDKSKKYPLLLDVYAGPCSQKADASFRLNWATY
LASTENIIVASFDRGSGYQGDKIMHAINRRLGTLEVEDQIEAARQFVKMGFVDSKRVAIWGWSYGGYVT
SMVLGSGSGVFKCGIAVAPVSRWEYDVSYTERYMGPLIPEDNLDHYRNSTVMSRAEHFKQVEYLLIHGT
ADDNVHFQQAQISKALVDAGVDFQAMVY
```

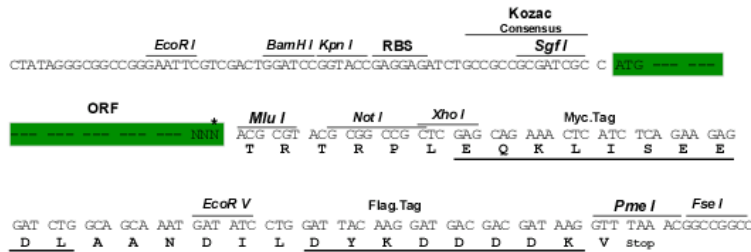
TRTRPLEQKLISEEDLAANDILDYKDDDDKV

**Chromatograms:** [https://cdn.origene.com/chromatograms/mm9004\\_d08.zip](https://cdn.origene.com/chromatograms/mm9004_d08.zip)

**Restriction Sites:** SgfI-MluI

**Cloning Scheme:**

Cloning sites used for ORF Shuttling:



\* The last codon before the Stop codon of the ORF

**ACCN:** NM\_001159543

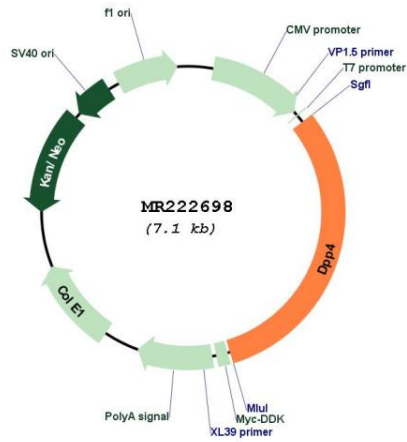
**ORF Size:** 2187 bp

**OTI Disclaimer:** The molecular sequence of this clone aligns with the gene accession number as a point of reference only. However, individual transcript sequences of the same gene can differ through naturally occurring variations (e.g. polymorphisms), each with its own valid existence. This clone is substantially in agreement with the reference, but a complete review of all prevailing variants is recommended prior to use. [More info](#)

**OTI Annotation:** This clone was engineered to express the complete ORF with an expression tag. Expression varies depending on the nature of the gene.

<b>Components:</b>	The ORF clone is ion-exchange column purified and shipped in a 2D barcoded Matrix tube containing 10ug of transfection-ready, dried plasmid DNA (reconstitute with 100 ul of water).
<b>Reconstitution Method:</b>	<ol style="list-style-type: none"><li>1. Centrifuge at 5,000xg for 5min.</li><li>2. Carefully open the tube and add 100ul of sterile water to dissolve the DNA.</li><li>3. Close the tube and incubate for 10 minutes at room temperature.</li><li>4. Briefly vortex the tube and then do a quick spin (less than 5000xg) to concentrate the liquid at the bottom.</li><li>5. Store the suspended plasmid at -20°C. The DNA is stable for at least one year from date of shipping when stored at -20°C.</li></ol>
<b>RefSeq:</b>	<u>NM_001159543.1, NP_001153015.1</u>
<b>RefSeq Size:</b>	3654 bp
<b>RefSeq ORF:</b>	2190 bp
<b>Locus ID:</b>	13482
<b>UniProt ID:</b>	<u>P28843</u>
<b>Cytogenetics:</b>	2 35.85 cM
<b>MW:</b>	84.3 kDa
<b>Gene Summary:</b>	<p>Cell surface glycoprotein receptor involved in the costimulatory signal essential for T-cell receptor (TCR)-mediated T-cell activation. Acts as a positive regulator of T-cell coactivation, by binding at least ADA, CAV1, IGF2R, and PTPRC. Its binding to CAV1 and CARD11 induces T-cell proliferation and NF-kappa-B activation in a T-cell receptor/CD3-dependent manner. Its interaction with ADA also regulates lymphocyte-epithelial cell adhesion. In association with FAP is involved in the pericellular proteolysis of the extracellular matrix (ECM), the migration and invasion of endothelial cells into the ECM. May be involved in the promotion of lymphatic endothelial cells adhesion, migration and tube formation. When overexpressed, enhanced cell proliferation, a process inhibited by GPC3. Acts also as a serine exopeptidase with a dipeptidyl peptidase activity that regulates various physiological processes by cleaving peptides in the circulation, including many chemokines, mitogenic growth factors, neuropeptides and peptide hormones. Removes N-terminal dipeptides sequentially from polypeptides having unsubstituted N-termini provided that the penultimate residue is proline. [UniProtKB/Swiss-Prot Function]</p>

Product images:



Circular map for MR222698