

Product datasheet for **MR222670**

Gjb3 (NM_008126) Mouse Tagged ORF Clone

Product data:

Product Type:	Expression Plasmids
Product Name:	Gjb3 (NM_008126) Mouse Tagged ORF Clone
Tag:	Myc-DDK
Symbol:	Gjb3
Synonyms:	Cnx31; Cx31; D4Wsu144e; Gjb-3
Mammalian Cell Selection:	Neomycin
Vector:	pCMV6-Entry (PS100001)
E. coli Selection:	Kanamycin (25 ug/mL)
ORF Nucleotide Sequence:	>MR222670 representing NM_008126 Red=Cloning site Blue=ORF Green=Tags(s)

TTTTGTAATACGACTCACTATAGGGCGGCCGGAATTCGTCGACTGGATCCGGTACCGAGGAGATCTGCC
GCC**CGATCGCC**

ATGGACTGGAAGAAGCTCCAAGACCTATTGAGTGGCGTGAACCACTCCACGGCATTGGGGCGCATCT
GGCTGTCAGTAGTGTTCGTCTCCGGGTGCTGGTGTATGTGGTGGCTGCCGAGCGTGTGGGGTGACGA
GCAAAAAGACTTTGACTGTAACACCAGGCAACCCGGCTGTACCAACGTGTGCTATGACAACCTTCTCCC
ATCTCAAACATCCGACTCTGGCCCTGCAGCTCATCTTCGTACGTGTCCGTCTATGCTGGTCATCTGC
ATGTAGCTACCGGAGGAGCGGAACGGAAGCATCGCCAGAAGCACGGGAGCAATGCCCAAAGTGT
CAGCCACCCGGCAAGAAGCATGGCGGCCCTGTGGTGGACCTACTGTTTAGCCTCATCTCAAGCTCATC
ATCGAATTGGTCTTCTGTACGTTCTCCACACGCTCTGGCATGGCTTACCATGCCGCGTCTGGTACAGT
GCGCCAGCATAGTACCCTGCCCAACACCGTGGATTGCTACATCGCTCGGCCACGGAGAAGAAGGTCTT
TACCTACTTATGGTAGGCGCTTCTGCCGTCTGCATTATCTCACCATCTGTGAGATCTGTACCTCATC
TTCCACAGGATCATGCGAGGCATAAGCAAGGGCAAGTCCACAAAGAGCATCAGCTCCCCGAAGTCTCCA
GCCGGCCTCCACCTGTCGCTGTACCACAAGTGTGGAGAGTGGCGATCCGGAAGCAGACCCAGCCAG
TGAAGAAGCTGCAGGCTTCAGCGCCAGCCTGACCCCAT

ACGCGTACGCGGCCGCTCGAGCAGAACTCATCTCAGAAGAGGATCTGGCAGCAAATGATATCCTGGATT
ACAAGGATGACGACGATAAGGTTTAA



[View online »](#)

Protein Sequence: >MR222670 representing NM_008126
Red=Cloning site Green=Tags(s)

MDWKKLQDLLSGVNQYSTAFGRWL SVVFVFRVLVYVVAERVWGDEQKDFDCNTRQPGCTNVCYDNFFP
 ISNIRLWALQLIFVTCPSMLVILHVAYREERERKHRQKHGEQCAKLYSHPGKKHGLWWTYLFSLIFKLI
 IELVFLYVLHTLWHGFTMPRLVQCASIVPCPNTVDCYIARPTEKKVFTYFMVGASAVCIILTICEICYLI
 FHRIMRGISK GKSTKSISSPKSSSRASTCRCHHKLLESGDPEADPASEKLQASAPSLTPI

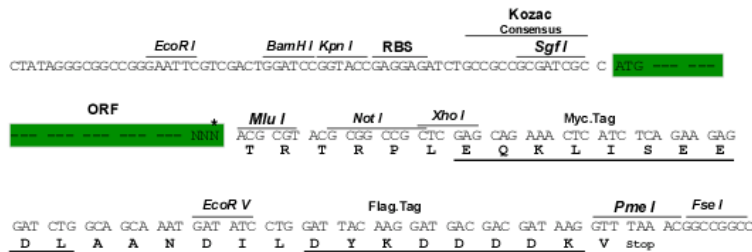
TRTRPLEQKLISEEDLAANDILDYKDDDDKV

Chromatograms: https://cdn.origene.com/chromatograms/mm9029_h10.zip

Restriction Sites: SgfI-MluI

Cloning Scheme:

Cloning sites used for ORF Shuttling:



* The last codon before the Stop codon of the ORF

ACCN: NM_008126

ORF Size: 810 bp

OTI Disclaimer: The molecular sequence of this clone aligns with the gene accession number as a point of reference only. However, individual transcript sequences of the same gene can differ through naturally occurring variations (e.g. polymorphisms), each with its own valid existence. This clone is substantially in agreement with the reference, but a complete review of all prevailing variants is recommended prior to use. [More info](#)

OTI Annotation: This clone was engineered to express the complete ORF with an expression tag. Expression varies depending on the nature of the gene.

Components: The ORF clone is ion-exchange column purified and shipped in a 2D barcoded Matrix tube containing 10ug of transfection-ready, dried plasmid DNA (reconstitute with 100 ul of water).

Reconstitution Method:

1. Centrifuge at 5,000xg for 5min.
2. Carefully open the tube and add 100ul of sterile water to dissolve the DNA.
3. Close the tube and incubate for 10 minutes at room temperature.
4. Briefly vortex the tube and then do a quick spin (less than 5000xg) to concentrate the liquid at the bottom.
5. Store the suspended plasmid at -20°C. The DNA is stable for at least one year from date of shipping when stored at -20°C.

RefSeq: [NM_008126.2](#), [NP_032152.1](#)

RefSeq Size: 1601 bp

RefSeq ORF: 813 bp

Locus ID: 14620

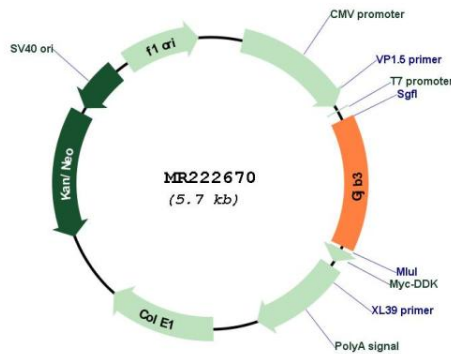
UniProt ID: [P28231](#)

Cytogenetics: 4 61.48 cM

MW: 31.4 kDa

Gene Summary: One gap junction consists of a cluster of closely packed pairs of transmembrane channels, the connexons, through which materials of low MW diffuse from one cell to a neighboring cell.[UniProtKB/Swiss-Prot Function]

Product images:



Circular map for MR222670