

Product datasheet for MR222659L3

Fcgrt (NM_010189) Mouse Tagged Lenti ORF Clone

Product data:

Product Type:	Expression Plasmids
Product Name:	Fcgrt (NM_010189) Mouse Tagged Lenti ORF Clone
Tag:	Myc-DDK
Symbol:	Fcgrt
Synonyms:	FcRn
Mammalian Cell Selection:	Puromycin
Vector:	pLenti-C-Myc-DDK-P2A-Puro (PS100092)
E. coli Selection:	Chloramphenicol (34 ug/mL)
ORF Nucleotide Sequence:	The ORF insert of this clone is exactly the same as(MR222659).
Restriction Sites:	SgfI-MluI
Cloning Scheme:	

Cloning sites used for ORF Shuttling:



* The last codon before the Stop codon of the ORF.

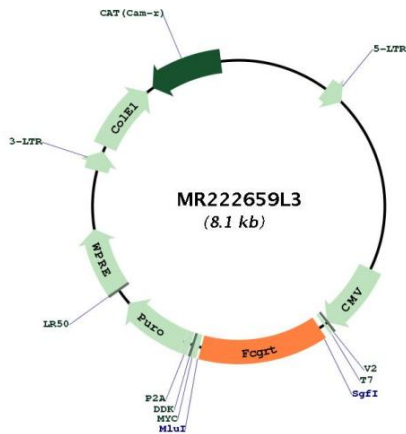
ACCN:	NM_010189
ORF Size:	1095 bp



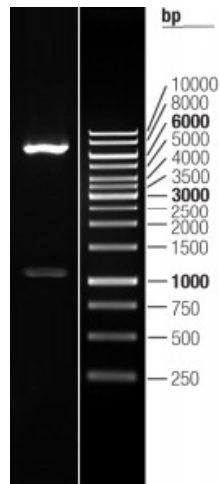
[View online »](#)

OTI Disclaimer:	The molecular sequence of this clone aligns with the gene accession number as a point of reference only. However, individual transcript sequences of the same gene can differ through naturally occurring variations (e.g. polymorphisms), each with its own valid existence. This clone is substantially in agreement with the reference, but a complete review of all prevailing variants is recommended prior to use. More info
OTI Annotation:	This clone was engineered to express the complete ORF with an expression tag. Expression varies depending on the nature of the gene.
Components:	The ORF clone is ion-exchange column purified and shipped in a 2D barcoded Matrix tube containing 10ug of transfection-ready, dried plasmid DNA (reconstitute with 100 ul of water).
Reconstitution Method:	<ol style="list-style-type: none">1. Centrifuge at 5,000xg for 5min.2. Carefully open the tube and add 100ul of sterile water to dissolve the DNA.3. Close the tube and incubate for 10 minutes at room temperature.4. Briefly vortex the tube and then do a quick spin (less than 5000xg) to concentrate the liquid at the bottom.5. Store the suspended plasmid at -20°C. The DNA is stable for at least one year from date of shipping when stored at -20°C.
RefSeq:	NM_010189.3 , NP_034319.2
RefSeq Size:	1738 bp
RefSeq ORF:	1098 bp
Locus ID:	14132
UniProt ID:	Q61559
Cytogenetics:	7 29.12 cM
Gene Summary:	Binds to the Fc region of monomeric immunoglobulins gamma (PubMed:7504013). Mediates the selective uptake of IgG from milk and helps newborn animals to acquire passive immunity. IgG in the milk is bound at the apical surface of the intestinal epithelium. The resultant FcRn-IgG complexes are transcytosed across the intestinal epithelium and IgG is released from FcRn into blood or tissue fluids (By similarity). Possible role in transfer of immunoglobulin G from mother to fetus (By similarity).[UniProtKB/Swiss-Prot Function]

Product images:



Circular map for MR222659L3



Double digestion of MR222659L3 using SgfI and MluI