

## Product datasheet for MR222601

### Setdb1 (NM\_001163641) Mouse Tagged ORF Clone

#### Product data:

Product Type:	Expression Plasmids
Product Name:	Setdb1 (NM_001163641) Mouse Tagged ORF Clone
Tag:	Myc-DDK
Symbol:	Setdb1
Synonyms:	AU022152; ESET; KMT1E; mKIAA0067
Mammalian Cell Selection:	Neomycin
Vector:	pCMV6-Entry (PS100001)
E. coli Selection:	Kanamycin (25 ug/mL)
ORF Nucleotide Sequence:	>MR222601 representing NM_001163641 Red=Cloning site Blue=ORF Green=Tags(s)

TTTTGTAATACGACTCACTATAGGGCGGCCGGAATTCGTCGACTGGATCCGGTACCGAGGAGATCTGCC  
GCC**CGATCGCC**

ATGTCCTCCCTCCCTGGGTGCATGAGTTGGCTGCAGCGCCAGCTGCAGCTGACTCTGCAGAGATTGCTG  
AGCTGCAGCAGCGGTGGTTGAAGAGCTGGGTATCTCTATGGAGAACTTCGTCAGTACATTGATGAGGA  
ACTGGAAAAGATGGACTGCATACAGCAGCGCAAGAAGCAGCTCGCAGAGCTGGAGACGTGGTACTACAG  
AAAGAGTCTGAAGTGGCTTATGTTGATCGGCTGTTTATGATGCATCCAGGGAAGTGACTAACTGTGAGT  
CTTTGGTGAAGGATTTCTACTCTAAGCTGGGACTACAGTATCATGACAGTAGCTCTGAGGATGAAGCTTC  
CCGGCCACAGAGATCATTGAGATTCCTGATGAAGATGATGATGTCTCAGTATTGATTCAGGTGATGCT  
GGGAGCAGAACTCCAAAAGACCAGAAGCTTCGTGAAGCTATGGCTGCCTTAAGAAAATCAGCTCAAGATG  
TCCAGAAGTTCATGGATGCTGTCAACAAGAAAAGCAGTTCCTCAAGATCTACATAAAGGAACCTTGGGTCA  
GGTGTCTGGAGAAGTGAAGAAAGATGGGGACCTGATAGTCAGCATGCGGATTCTGGGCAAGAAGAGGACT  
AAGACATGGCACAAGGCACCCTTATTGCCATCCAGACTGTTGGGCTAGGAAAAAATACAAAGTGAAT  
TTGACAACAAAGGAAAGAGTCTGCTATCTGGGAACCATATTGCCTATGATTACCACCCTCCCGCTGACAA  
GCTGTTTGTGGGAGTTCGAGTGGTGGCAAGTACAAGATGGAATCAGGTCTGGCTTTATGCTGGCATT  
GTAGCTGAGACCCCTAACGTCAAGAACAAGCTCAGATTTTTAATTTTTTTTGGATGATGGCTATGCTTCCT  
ATGTCAGTCAAGCTTATCCATTTGCCGACCCTAAAAAGACTTGGGAGGACATAGAAGATAG  
CTCCTGCCGAGACTTCATAGAGGAATATATCACTGCCTATCCAAACCGCCAATGGTACTTCTCAAGAGT  
GGGAGCTTATCAAGACTGAGTGGGAAGGCACATGGTGAAGTCTCGAGTTGAAGAGGTGGATGGCAGCC  
TAGTCAGGATCCTCTTTCTGGATGACAAAAGATGTGAGTGGATATATCGAGGCTCTACACGCTGGAACC  
TATGTTTAGTATGAAGACATCCTCAGCCTCTGCAATGGAGAAGAAGCAAGGGGGCAACTCAGAACCCTG  
CCTAATATGGGTGCTGTGAGGAGCAAAGGCTCTGTTGTTTCAGTATACACAGGATCTAACTGGTACTGGAA  
TCCAGTTAAGCCATGGAGCCCTACAGCCTATAGTCCACCGCCCACTTCTATACCTCCTCTTTCC  
CCCCAAGCAGCTGACTGAAAGCTTAGAAAGCAACTGCACAATCACGGAACAAGTAGCCAAGAAG



[View online >](#)

AGCACATCATTCCGACCAGGATCTGTGGGCTCCGGCCATTCTCCCTACTTCATCCACACTCAGTGAAA  
ATGTGTCTGCTGGGAACTTGGGATAAACCAGACATATCGGTACCTTTGGCCTCAGTAACATCTACCCC  
AGCATCTGCAGCCCTCCAGTCCCTCCAGTCCCACCAGGGCTCCAACCCCTCCAGGGCTCCAGTCTCT  
CCAGGGCTCTAGCTCCTCCAGCCTTCCATGGCATGTTAGAGCGGGCACCAGCTGAGCCCTCCTACCGAG  
CCCCATGGAGAAGCTTTTCTATTTACCTCATGTCTGCAGTTACACTTGTGTCCCGGATCAGACCCAT  
GAGAAACGAACAGTATCGGGCAAGAACCCTCTATTAGTTCACCTTCTGTATGACTTCCGGAGGATGACA  
GCACGGCGCAGAGTTAACCGCAAAATGGGCTTTCATGTAATCTATAAGACACCCTGTGGTCTGCCTTC  
GGACGATGCAGGAGATAGAGCGCTACCTTTTTGAGACTGGCTGTGACTTTCTGTTCTGGAGATGTTCTG  
TTTGGATCCATATGTTCTTGTGACAGAAAGTTTCAACCCTTTAAGCCTTTTTACTATATTTTGGACATC  
ACCTATGGCAAGGAAGATGTTCCCTGTCTGTGTTAATGAGATTGACACAACCTCCCCACCCAGGTGG  
CCTACAGCAAGGAACGCATTCTGGCAAGGGTGTTCATTAAACACAGGCCCTGAATTTCTGTTGGCTG  
TGACTGCAAGGATGGGTGTCGGGATAAATCCAAATGTGCCTGCCACCAGCTAACTATCCAGGCCACAGCC  
TGTACCCAGGGGCCAAGTCAACCCTAACTCTGGCTACCAGTATAAAGACTAGAAGAGTGTCTGCCCA  
CAGGGGTTTATGAGTGTAAACAAACGCTGCAATTGTGACCCAAACATGTGCACAAATCGGTTGGTGCAGCA  
TGGTCTGCAGGTTGACTACAGTGTAAAGACACAGAACAAGGGCTGGGGTATCCGCTGCTTGGATGAT  
ATTGCCAAAGGCTCTTTTGTCTGCAATTTATGCAGGCAAAATCCTGACAGATGACTTTGCAGACAAAGAAG  
GCCTGGAGATGGGTGATGAGTACTTTGCAAATCTGGACCACATTGAAAGTGTGGAGAACTCAAGGAAGG  
ATATGAGAGTGTATGTTCCCACTTCTCTGACAGCAGTGGGGTAGATATGAAGACCAGGAAGATGGCAAC  
AGCGGTTCCAGAGGACCCTGAAGAATCCAATGATGACAGCTCTGATGATAACTTCTGTAAGGATGAGGACT  
TCAGCACCAGTTCAGTGTGGCGTAGCTATGCTACCCGGAGGCAGACTCGGGGTCAAAGGAGAATGAATT  
GTCTGAGATGACTTCAAAGGACTCCCGCCCCAGACCTCGGGCTCCACATGTTCTATCCCTTCTCA  
GTATCTGTAGGGGGCTGCAATCCACCTTCTCTGAAGAGACACCAAGAACAAGGTGGCTCGTGGTTGA  
GTTGCAATAGTGTGAGTGAAGGTGGATTTGCTGACTCTGACAGCCGTTCTTCTTCAAGACTAGTGAAGG  
TGGAGATGGCCGTGCTGGGGGAGGCCGGGAGAGGCTGAAAGGGCCTCTACCTCAGGATTGAGCTTCAAG  
GATGAAGGAGACAATAAGCAGCCTAAAAAGAGGACCCTGAGAACCAGAAACAAGATGCCAGTAGTACTG  
AAGGCTCTCAGAAATCATGGACATAATCCTCCCATGAAGTCTGAAGGGCTTCGCCGATCAGTAGTAAAT  
GTCTGTGCTCCAGAGCCAGCGATTGTGACTTCTACTCAGTCAAACCCTGATGACATCCTGACACTGTCC  
AGCAGCACAGAGAGTGAAGGGGAAAGTGAACCAGCCGAAAGCCACTGCTGGTCACTTCAGCCACAG  
CTGTTGATAGTGTGACATCCAGACCATCTTCTGGCTCTGACGGTGTGACTTTGAGGACAAGAAGAA  
CTTGTGAGGACCAACAAGCGCCAGGTGGCAGTAAATCAACCCGAGGCTTTGCTCTTAAATCAACCCAT  
GGTATTGCCATTAATCAACCAACATGGCTTCCGTGGACAAGGGGAGAGTGCACCAGTTCGTAAGAACA  
CAGCCAGTTCATGATGGTGAAGAGTCTTGTACATCATTGATGCCAACTTGAAGGCAACCTAGGCCG  
CTACCTCAATCACAGTTGCAGCCCAACCTGTTTGTCCAGAATGTGTTTGTGGATACCCATGATCTTCGC  
TTCCCTTGGGTGGCCTTCTTTGCCAGCAAGAGAATCCGGGCTGGAACAGAACTCACTTGGGACTACAAC  
ACGAAGTGGGCAGTGTGGAAGGCAAGGAGCTGCTGTGCTGTGGGGCCATTGAATGCAGAGGGAGACT  
TCTT

ACGCGTACGCGGGCCGCTCGAGCAGAACTCATCTCAGAAGAGGATCTGGCAGCAATGATATCCTGGATT  
ACAAGGATGACGACGATAAGGTTTAA

**Protein Sequence:** >MR222601 representing NM\_001163641  
 Red=Cloning site Green=Tags(s)

```

MSSLPGCMSLAAAPAAADSAEIAELQQAVVEELGISMEELRQYIDEELEKMDCIQQRKKQLAELETWVLO
KESEVAVYVDRLFDDASREVTNCESLVKDFYSKGLQYHDSSEDEASRPEIIEIPDEDDVLSIDSGDA
GSRTPKDQKLREAMAALRKSADVQKFMDAVNKSSSQDLHKGTLGQVSGELSKDGLIIVSMRILGKKRT
KTWHKGTLIAIQTVGLGKKYKVKFDNKGKSLLSGNHIAIDYHPPADKLFVGSRVVAKYKDNQVWLYAGI
VAETPNVKNKLRFLIFFDDGYASYVTQSELYPICRPLKKTWEDIEDSSCRDFIEEYITAYPNRPMVLLKS
GQLIKTEWEGTWKSRVEEVDGSLVRILFLDDKRCEWIYRGSTRLEPMFSMKTSSASAMEKKQGGQLRTR
PNMGAVRSKGPVVQYTQDLTGTGIQFKPMEPLQPIAPPAPLPIPLSPQAADTESLESQAQSRKQVAKK
STSFPRGSGVSGHSSPTSSTLSENVSAGKLGINQTYRSPASVTSTPASAAPPVPPVPPGPTPPGPPAP
PGPLAPPFAFHGLERAPAEPYRAPMEKLFYLPHVCSYTCLSRIRPMRNEQYRGKNPLLVPVLLYDFRMT
ARRRVNRKMGFHVYKTPCGLCLRTMQEIERYL FETGCDFLFLEMFC LDPYVLRDRKQFPKPFYIIDI
TYGKEDVPLSCVNEIDTTPPPQVAYSKERIPGKGVFINTGPEFLVGCDCDKGCRDKSKCACHQLTIQATA
CTPGGQVNPNSGYQYKRLLEECLPTGVYECNKRCNCDPNMCTNRLVQHGLQVRLQLFKTQNKGWGIRCLDD
IAKGSFVCIYAGKILTDDFADKEGLEMGDEYFANLDHIESVENFKEGYESDVPTSSDSSGVMDKQEDGN
SGSEDPESNDSSDDNFCKDEDFSTSSVWRSYATRRQTRGQKENELSEMTSKDSRPPDLGPPHVPVPS
VSVGGCNPSSSEETPKNKVASWLSNSVSEGGFADSDSRSSFKTSEGGDGRAGGGRGEAERASTSGLSFK
DEGDNKQPKKEDPENRNKMPVTEGSQNHGHNPPMKSEGLRRSASKMSVLQSQRVVTSTQSNPDDILTLS
SSTESEGESGTSRKPTAGHTSATAVDSDDIQTISSGSDGDDFEDKKNLSGPTKRQVAVKSTRGFALKSTH
GIAIKSTNMASVDKGESAPVRKNTRQFYDGEESCYIIDAKLEGNLGRYLNHSCSPNLVQNVFVDTHDLR
FPWVAFFASKRIRAGTELTWDYNYEVGSVEGKELLCCCGAIECRGRL
  
```

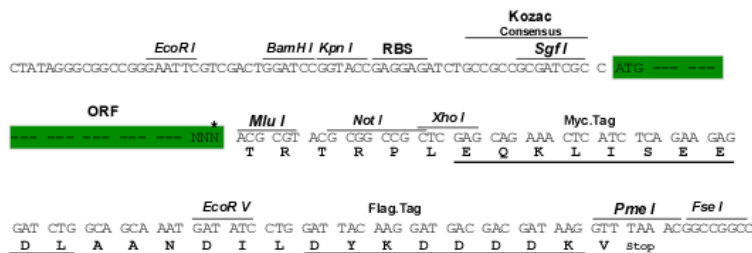
TRTRPLEQKLISEEDLAANDILDYKDDDDKV

**Restriction Sites:**

SgfI-MluI

**Cloning Scheme:**

Cloning sites used for ORF Shuttling:



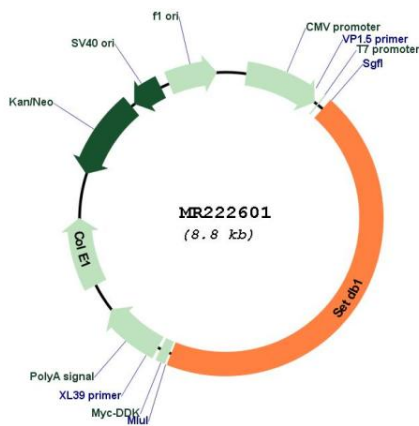
\* The last codon before the Stop codon of the ORF

**ACCN:** NM\_001163641

**ORF Size:** 3924 bp

- OTI Disclaimer:** The molecular sequence of this clone aligns with the gene accession number as a point of reference only. However, individual transcript sequences of the same gene can differ through naturally occurring variations (e.g. polymorphisms), each with its own valid existence. This clone is substantially in agreement with the reference, but a complete review of all prevailing variants is recommended prior to use. [More info](#)
- OTI Annotation:** This clone was engineered to express the complete ORF with an expression tag. Expression varies depending on the nature of the gene.
- Components:** The ORF clone is ion-exchange column purified and shipped in a 2D barcoded Matrix tube containing 10ug of transfection-ready, dried plasmid DNA (reconstitute with 100 ul of water).
- Reconstitution Method:**
1. Centrifuge at 5,000xg for 5min.
  2. Carefully open the tube and add 100ul of sterile water to dissolve the DNA.
  3. Close the tube and incubate for 10 minutes at room temperature.
  4. Briefly vortex the tube and then do a quick spin (less than 5000xg) to concentrate the liquid at the bottom.
  5. Store the suspended plasmid at -20°C. The DNA is stable for at least one year from date of shipping when stored at -20°C.
- RefSeq:** [NM\\_001163641.1](#), [NP\\_001157113.1](#)
- RefSeq Size:** 4682 bp
- RefSeq ORF:** 3927 bp
- Locus ID:** 84505
- Cytogenetics:** 3 F2.1
- MW:** 145.1 kDa

**Product images:**



Circular map for MR222601