

Product datasheet for **MR222593**

Slitrk5 (NM_198865) Mouse Tagged ORF Clone

Product data:

Product Type:	Expression Plasmids
Product Name:	Slitrk5 (NM_198865) Mouse Tagged ORF Clone
Tag:	Myc-DDK
Symbol:	Slitrk5
Synonyms:	2610019D03Rik
Mammalian Cell Selection:	Neomycin
Vector:	pCMV6-Entry (PS100001)
E. coli Selection:	Kanamycin (25 ug/mL)



[View online »](#)

ORF Nucleotide Sequence:

>MR222593 representing NM_198865
 Red=Cloning site Blue=ORF Green=Tags(s)

TTTTGTAATACGACTCACTATAGGGCGGCCGGAATTCGTCGACTGGATCCGGTACCGAGGAGATCTGCC
 GCC**CGGATCGCC**

ATGCACGTTTGTGCCCCAGTAACTTTGGAACAGGACCTTCACAGAAAAATGCATAGCTGGATGCTGC
 AGACTCTAGCATTGCTGTAACATCTCTCGTCCTTTCCTGTGCAGAAACCATCGATTATTATGGGAAAT
 CTGTGACAATGCATGTCCTTGTGAGGAAAAGGACGGCATTTTAACTGTGAGCTGTGAAAACCGGGGCATC
 ATCAGTCTCTGAAATTAGCCCTCCCCGTTTCCCAATCTATCACCTCTTGTGTCTGAAAACCTTCTGA
 GCCGCCTCTATCCCAATGAGTTTGTAAATTACACAGGGGCTTCAATTTTACATCTGGGTAGCAATGTTAT
 CCAAGACATTGAGACTGGGGCTTTTCATGGGCTGAGGGGTTTGGGCGACTCCATCTAAACAATAATAAA
 TTGGAACCTTCTGCGAGATGATACCTTTCTGGCTTGGAGAAGTTAGAATACCTGCAGGTCGATTACAATT
 ACATCAGTGTATTGAACCAATGCTTTTGGGAACTGCACATGCTGCAGGTGCTTATCCTCAATGACAA
 TCTCTTGTGAGGTTACCAACAATCTTTCCGTTTTGTGCCCTAACGCACTTGGACTTGGGGGGAAC
 AGGCTGAAACTTCTGCCCTATGTGGGGCTTGTCAACACATGGATAAAGTTGTGGAATTACAGCTGGAGG
 AAAACCCCTGGAATTGCTCCTGTGAACTAATTTCTCTCAAGGATTGGTTGGACAGCATCTCTACTCAGC
 CCTTGTGGGCGATGTGGTCTGTGAGACCCCTTCCGTCTACACGGCAGGGATTTGGACGAGGTATCCAAG
 CAGGAACCTTGTCCAAGGAACTCATTTCTGACTACGAGATGAGGCCACAGACTCCTTAAAGCACCACGG
 GGTATCTACATACCACCCAGCTTCTGTAACCTGTGGCCACTTCTTCTCTGCTGTTTACAAACCCCT
 CTTGAAGCCTCCTAAGGGACCCGCCAGCCCAACAAACCCAGAGTGCGCCCACTTCTAGGCAGCCCTCT
 AAAGACTTGGGCTACAGTAACTATGGCCCCAGCATAGCCTACCAGACCAATCCCCGTTGCTTTGGAAT
 GTCTACAGCATGTACTGCAACCTGCAGATCTCTGATCTGGGTCTCAATGTCAACTGCCAAGAGCGCAA
 GATCGAGAGCATCGCGGAGCTGCAGCCCAAGCCCTACAATCCCAAGAAAAATGTACCTGACAGAGAACTAT
 ATCACTGTTGTGCGCAGAACAGACTTCTGGAAGCCACCGGTCTAGACCTCCTGCACCTGGGTAATAACC
 GCATCTCCATGATCCAGGACCGGCCCTTTGGGATCTAGGCAACCTGAGACGCCTCTATCTGAATGGCAA
 CAGGATTGAGAGGCTGAGCCAGAATTATTCTATGGCTGCAGAGCCTGCAGTATCTTCTCCTCCAGTAC
 AATCTCATCCGTGAGATCCAGGCTGGGACTTTTGGATCCCGTCCCAACCTCCAGCTGCTATTCTTGAATA
 ACAACCAACTGCAGGCCATGCCTCCGGTGTCTTCTGCGCTGACACTTCTCAGGCTGAACCTGAGGGG
 TAACAGCTTCACTTCTTCCAGTGAGTGGAGTTTGGATCAGCTGACTCCCTCATTCAAATAGATCTA
 CATGACAACCTTGGGATTGTACCTGCGACGTGGTGGGATGAAGCTGTGGATTGAGCAGCTCAAAGTGG
 GGGTGTAGTGGACGAAGTATCTGTAAGGCGCCCAAGAAATTCGAGAGACCTACATGCGGTCCATCAA
 GTCTGAACTGCTATGCCAGACTACTCTGATGTGGTGGTTTCCACGCCACGCCCTTCCATCCAGGTA
 CCATCCAGGACGAACGCAGCGACTCCAGCTGTGAGGTTGAATAGCACTGGGACCCCGCAGGCTTAGGAG
 CTGGGACGGGGCATCTCTGTGCCCTTATCCGTGTTGATCCTCAGTCTGCTGCTGGTTTTATCATATGTC
 CGTCTTTGTGGCAGCAGGCCCTTTTCGTGCTGGTGCATGAAACGGAGGAAAAAGAACAGAGCGACCACCC
 AGTACCAACAATCCGACGTGAGCTCTTCAACATGCAGTACAGCGTGTATGGGGTGGAGGCGCGCGG
 GGGGTGGCCACCCACACGCACACGTGCACCATCGCGGGCTGCGTGCCTGCCCCAAGGTGAAGACTCCCGCGG
 CCACGTGTATGAATACATCCCTCACCCCTGGCCACATGTGCAAGAACCCATCTACCGTCTCGAGAA
 GGCAATTCGTGGAGGATTACAAAGACCTGCACGAGCTCAAGGTCACTTACAGCAGCAACCACCTGC
 AGCAGCAGCCGCGCGCCGCGCAACAGCCCCAGCAGCAGCCCTCCGAGATGCAGATGCAGCTGG
 GGAGGAGGAGAGGCGGAAAGCCACCATTTGAGGAGCCCGCCTACAGCGTGCAGCCATCGAGCCCGGA
 GAGGACCTACTGTGCGCGGTGCAGGACGCTGATCGTTTTACAGGGGCATTTTAGAGCCAGACAAACACT
 GCTCCACTACCCCTGCGGGCAGCAGCTCCAGAAATACCCTAAATTTCCATGCAGCCCGGCTGCTTACAC
 TTTCTCCCAAATATGACCTGCGACGCCCCATCAGTATTTGCACCCGGGTGCAGGGGAGAGCAGGCTG
 CGGAACCGGTGCTCTACAGCCCTCCGGGTGCTGTCTTTGTAGAACCGAACCGGAACGAGTACCTGGAGT
 TAAAAGCAAACTCAATGTTGAGCCGACTACCTCGAAGTGTGAAAAACAGACCACATTTAGTCAGTT
 C

ACGCGTACGCGGCCGCTCGAGCAGAACTCATCTCAGAAGAGGATCTGGCAGCAAATGATATCCTGGATT
 ACAAGGATGACGACGATAAGGTTTAA

Protein Sequence: >MR222593 representing NM_198865
 Red=Cloning site Green=Tags(s)

MHVCCPPVTLEQDLHRKMHSWMLQTLAFVAVTSLVLSCAETIDYYGEICDNACPCEEKDGILTVSCENRGI
 ISLSEISPPRFPIYHLLLSGNLLSRLYPNEFVNYTGASILHLGNSVIQDIETGAFHGLRGLRRLHLNNNK
 LELLRDDTFLGLENLEYLQVDYNYISVIEPNAFGKHLMLQVLI LNDNLLSGLPNNLFRFVPLTHLDLRGN
 RLKLLPYVGLLQHMDKVVELQLEENPWNCSELISLKDWLDSISYSALVGDVVCETPFRLHGRDLDEVSK
 QELCPRKLI SDYEMRPQTPLSTTGYLHTTPASVNSVATSSSAVYKPKPKPKGTRQPNKPRVPTSRQPS
 KDLGYSNYGPSIAYQTKSPVPLECPTACTCNLQISDLG LNVNCQERKIESIAELQPKPYNPKKMYLTENY
 ITVVRRTDFLEATGLDLLHLGNNRISMIQDRAFGDLGNLRLYLNGNRIERLSPELFYGLQSLQYLFLQY
 NLIREIQAGTFDPVNLQLLFLNQLQAMP SGVFSGLTLLRLNLRGNSFTSLPVSGLDQLTSLIQIDL
 HDNPWDCDCDVGMLWIEQLKVGVLVDEVI CKAPKFAETYMRSIKSELLCPDYSDVVSTPTPSSIQV
 PSRTNAATPAVRLNSTGTPAGLGAGTGASSVPLSVLILSLLL VIMSVAAGL FVLVMKRRKKNQSDHT
 STNNSDVSSFNMQYSVYGGGGGGGGHPHAHVHHRG PALPKVKT P AGHVY EYIPHPLGHMCKNPIYRSRE
 GNSVEDYKDLHELKVTYSNHHLQQPPPPPPQQPQQPPQMOMQPGEEERRESHHLRSPAYSVSTIEPR
 EDLLSPVQDADRFYRGILEPDKHCSTTPAGSSLP EYKPFPCSPAAYTFSPNYDLRRPHQYLHPGAGESRL
 REPVLVSPPGAVFVEPNRNEYLELAKLNV EPDYLEVL EKQTTFSQF

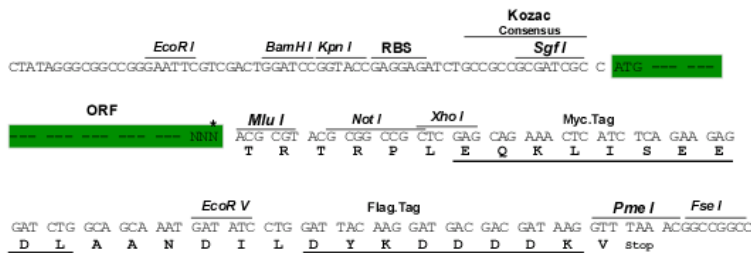
TRTRPLEQKLISEEDLAANDILDYKDDDDKV

Chromatograms: https://cdn.origene.com/chromatograms/mm9002_g06.zip

Restriction Sites: SgfI-MluI

Cloning Scheme:

Cloning sites used for ORF Shuttling:



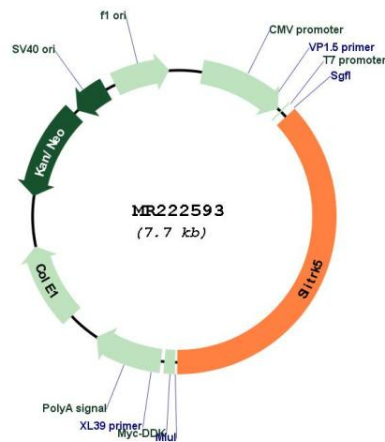
* The last codon before the Stop codon of the ORF

ACCN: NM_198865

ORF Size: 2871 bp

- OTI Disclaimer:** The molecular sequence of this clone aligns with the gene accession number as a point of reference only. However, individual transcript sequences of the same gene can differ through naturally occurring variations (e.g. polymorphisms), each with its own valid existence. This clone is substantially in agreement with the reference, but a complete review of all prevailing variants is recommended prior to use. [More info](#)
- OTI Annotation:** This clone was engineered to express the complete ORF with an expression tag. Expression varies depending on the nature of the gene.
- Components:** The ORF clone is ion-exchange column purified and shipped in a 2D barcoded Matrix tube containing 10ug of transfection-ready, dried plasmid DNA (reconstitute with 100 ul of water).
- Reconstitution Method:**
1. Centrifuge at 5,000xg for 5min.
 2. Carefully open the tube and add 100ul of sterile water to dissolve the DNA.
 3. Close the tube and incubate for 10 minutes at room temperature.
 4. Briefly vortex the tube and then do a quick spin (less than 5000xg) to concentrate the liquid at the bottom.
 5. Store the suspended plasmid at -20°C. The DNA is stable for at least one year from date of shipping when stored at -20°C.
- RefSeq:** [NM_198865.1](#), [NP_942565.1](#)
- RefSeq Size:** 4829 bp
- RefSeq ORF:** 2874 bp
- Locus ID:** 75409
- UniProt ID:** [Q810B7](#)
- Cytogenetics:** 14 E4
- MW:** 107.6 kDa
- Gene Summary:** Suppresses neurite outgrowth.[UniProtKB/Swiss-Prot Function]

Product images:



Circular map for MR222593