

Product datasheet for MR222557

Sbno1 (NM_001081203) Mouse Tagged ORF Clone

Product data:

Product Type: Expression Plasmids
Product Name: Sbno1 (NM_001081203) Mouse Tagged ORF Clone
Tag: Myc-DDK
Symbol: Sbno1
Synonyms: 9330180L10Rik; A1849128; AW557836; BC021875; mSno1; Sbno; sno
Vector: pCMV6-Entry (PS100001)
E. coli Selection: Kanamycin (25 ug/mL)
Cell Selection: Neomycin
ORF Nucleotide Sequence: >MR222557 representing NM_001081203
Red=Cloning site Blue=ORF Green=Tags(s)

TTTTGTAATACGACTCACTATAGGGCGCCGGAATTCGTCGACTGGATCCGGTACCGAGGAGATCTGCC
GCC**CGGATCGCC**

ATGGTGGAACCAGGGCAAGATTTACTGCTTGCTGCCTTGAGTGAGAGTGGGATTAGTCCGAATGACCTCT
TTGATGTTGATGGTGGAGATGCTGGCCTTGCCACCCTACGCCCCCTTCAGTTCAACAGTCGGTGCCACT
TAGTGCATTAGAAGTGGGTTGGAGACAGAAGCAGCAGTTCCTGTCAAACAAGAGCCAGAGCCGATGTC
ACTCCCGCACTGTTAAATGTGAGGCAGCAGCCTCCATCCACTACAACGTTTGTGCTGAATCAAATAAATC
AACTTCCAACCTTTGGGATCTACAATTGTAATGACTAAAACACCACCTGCAACAACGAATAGGCAAAACCAT
CACTTTGACAAAGTTCATCCAGACCAGTCAAAACACACGCCCTTCAGTTTCAGCACCAGCAGTACGAAAT
GCCATGCCCGCTGCTCCTTCAAAGACCAGGTTGAGCTAAAGGATTTACTCAAAAATAATAGTTTAAACG
AACTCATGAAACTGAAGCCACCCGCAATATTGCTCAGCCAGTTGCAACTGCAGCTACTGATGTCAGTAA
TGGTGCAGTTAAGAAGGAGTCTTCTAATAAAGAAGTGGCAGGATATGGATAAATGACATGAAGATGAGG
AGCTTTTCCCCCACCATGAAGGTACCTGTTGTTAAAGAGGAAGATGAACCAGAAGAAGAAGATGAGGAAG
AAATGGGTCATGCAGAGACCTACGCAGAGTATATGCCAATAAAATTAATAAATGGCCTCGCTCACCTGA
TGCAGTGGTGGAGACTAGCTCTCTGTCCAGTGTCACTCCTCCTGATGTTTGGTACAAAACCTCCATCTCT
GAAGAGACCATTGATAATGGCTGGCTGTCTGCATTGCAGCTTGAGGCAGTTACCTATGCGGCCAGCAAC
ATGAAACATTCTACCTAATGGAGACCGTCTGGCTTCTTAATAGGCGATGGTGTGGTGTGGGTAAGG
CCGGACAATAGCAGGGATCATATATGAAAATATTTGTTGAGTAGAAAAAGAGCATTGTGGTTTAGTGTA
TCAAATGACTTAAATATGATGCTGAAAGAGATTTAAGGGATATTGGAGCAAAAAACATTTTGGTCCATT
CGTTAAATAAGTTTAAATATGGTAAGATTTCTTCAAACACAATGGGAGTGTGAAAAAGGTGTTATTTT
TGCTACCTATTCTCCCTTATTGGTGAAGCCAGTCTGGTGGTAAATATAAGACCAGGTTAAAACAGCTT
CTACACTGGTGTGGTGCAGACTTCGATGGAGTGATAGTGTGGATGATGAATGTCACAAGCAAAAAACTTAT
GTCTGTTGGTCTTCAAAGCCAACCAAGACAGGCTTGGCTGTTTATAGAGCTTCAGAACAATGGCCAAA
AGCCAGAGTGTGTTATGCCAGTGCCACTGGTGTCTGAACCACGCAACATGGCCTACATGAACCGTCTT
GGAATATGGGGTGAAGGAACTCCATTGAGAGAATTTAGTGATTTTATCCAAGCTGTGGAACGCAGAGGTG



TTGGTGCCATGGAAATCGTTGCTATGGATATGAAGCTTAGAGGAATGTACATTGCACGGCAGCTGAGCTT
TACTGGAGTGACCTTCAAATTGAGGAAGTTCTTCTTTCTCAAAGCTATGTGAAAATGTATAACAAAGCA
GTCAAGCTGTGGGTTATCGCTAGAGAGCGATTTCAACAAGCTGCAGATTTGATTGATGCTGAGCAGAGAA
TGAAGAAATCGATGTGGGGTCAGTTCTGGTCTGCTCACCAGAGGTTTTTAAAGTACCTGTGTATAGCATC
CAAAGTAAAAGGGTGGTGCAGCTGGCTCGGGAAGAGATCAAGAACGGGAAGTGTGTTGTAATTGGTCTT
CAGTCTACAGGAGAAGCCAGAACTTTAGAGGCCTTGGAAGAGGGAGGAGGAGAACAAATGATTTGTTT
CAACTGCCAAAGGGGATTGCACTGATTGAAAAACACTTCCCTGCTCCAGACAGGAAGAACTTTA
TAGTTTGCTAGGAATCGATTTGACAGCCCAAGTAACAACAGTTCACCAAGAGATAGTCCTTGTAAGAA
AATAAAATAAAGAAGCGGAAAGGTGAAGAAATCACTCGAGAAGCCAAAAAGCACGAAAAGTTGGTGGCC
TCACAGGAAGCAGCTCTGACGACAGTGAAGTGAAGTCTGTGTCTGATAATGACGAAAAGCAGCTATGAGAG
CTCTAAAAACATGAGCTCTGGGGATGATGACGATTTCAATCCCTCAGAGATGAGTCCAGTGAAGACAAT
GAGGATGATCCGTGTTAATTAGGAAAGACCATAAGAAAAAGCAAAGATAAAAAAAGAAGAAAAGTATAG
ATCCAGATTCCATTCAAAGTGCCTTGTTAGCATCAGGTCTGGATCAAAGCGGCCTAGTTTCTCCTCTGC
ACCAGTCACTCGCCTGCTTCAACAGTGCACCAGCCAACAGTAACAGCAACAGCAACAGCAGCCTTGTA
ACAAGTCAAGATGCTGTGAAAGGGCGCAACAGATGAAGAAAGACCTGCTTGATAAACTAGAAAAATTGG
CTGAAGACCTCCCTCCTAACACCCTGGATGAACCTATCGATGAACCTGGTGGTCCGAAAATGTGGCTGA
GATGACTGGCCGCAAAGGGCGGGTAGTGAGCAATGATGACGGAAGCATATCCTACGAGTCCAGGTCTGAA
CTTGATGTGCCTGTGGAGATTCTAAACATCACAGAGAAGCAAAGGTTTCATGGATGGAGACAAGAATATTG
CTATTATCTCAGAAGCTGCCAGCTCAGGTATTTCAATACAAGCAGATCGGAGAGCTAAAAACCAAAGGCG
AAGAGTTCACATGACTTTAGAATTACCTTGAGTGTCTGATAGGGCGATTGAGCAGTTTGGGAAGACACAC
AGGTCAAACCAAGTGACTGCTCCAGAGTATGTTTTTTGATTTCCGAACTGGCTGGAGAAGCAGAGATTTG
CATCTATTGTTGCTAAAAGACTTGAGAGTTTGGGGCACCTACACATGGTGCAGAGAAGCAACAGAATC
TAGAGATCTGAGCAGATCAACTTTGACAACAAGTATGGAAGAAATGCTTTAGAAATTGTTATGAAATCC
ATTGTAAACTTGATTCTCCTATGGTATCACCACTCCAGACTACCCTGGAGAATTCTTTAAAGAGCTTC
GGCAAGGACTGATAGGAGTGGGCTTGATTAATGTAGAGGATCGCTCAGGAATTCTTACTCTTGATAAAGA
CTATAACAATATAGGAAAGTTCTTAAACAGAATCCTGGGCATGGAGGTGCATCAGCAGAATGCGCTGTTT
CAGTATTTTGCAGACACACTTACTGCAGTTGTTTCAAGATGCCAAGAAGAACGGAAGATACGACATGGGAA
TCCTAGATCTGGGTTCTGGAGATGAGAAGGTGAGGAAGAGTGTGTCAAGAAGTTTCTAACTCCAGGGTA
TTCAACCTCCGGCCATGTAGAGTTATACACGATTAGTGTGGAGAGGGGAATGCTCTGGGAGGAAGCAACC
AAGATTTGGGCAGAGCTGACTGGACCAGATGATGGCTTTTACTTATCATTGCAGATAAGAAACAACAAAA
AAACTGCAATCTTAGTTAAAGAAGTAAACCCTAAGAAGAACTATTTTTAATTTACCGACCAAACTGG
GAAGCAACTCAAATTAGAAATTTATGCTGACCTGAAAAAGAAATATAAGAAGGTAGTTTCTGATGACGCC
CTGGTACACTGGCTGGATCAGTATAACTCCTCTGCAGACACCTGTACTCACGCATACTGGCGTGGCAATT
GCAAAAAAGCAAGTTTAGGATTGGTATGTGAGATTGGTCTCCGCTGCCGCACGACTATGTACTGTGTGG
CTCAGTACTGAGCGTCTGGACAAAAGTGGAAAGGTGTTCTGGCCTCTGTCAGCGGCACAAATGTGAAAATG
CAGATAGTGGCGCTAAGGACCGAAGATGGGCAGCGGATTGTAGGTTTGTATCATTCCAGCAAATTTGTGTG
CTCCTCTGTAATCTCCTGTCAACTTCAGACCAGTCTCAGCAGCTCGCAGTGCAACAAAAACAGCTGTG
GCAACAGCATCACCCACAGAGCATCACCAACTTGAGCAACCTG

ACGCGTACGCGGCGCTCGAGCAGAACTCATCTCAGAAGAGGATCTGGCAGCAAATGATATCCTGGATT
ACAAGGATGACGACGAT AAGGTTTAA

Protein Sequence: >MR222557 representing NM_001081203
 Red=Cloning site Green=Tags(s)

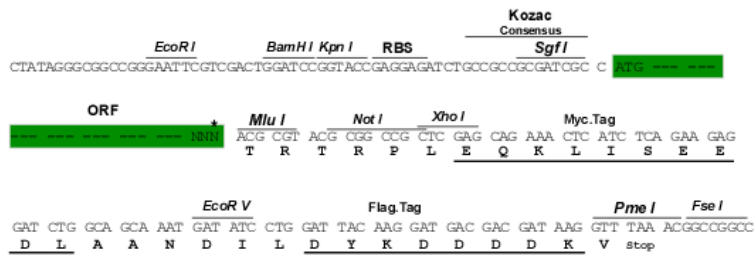
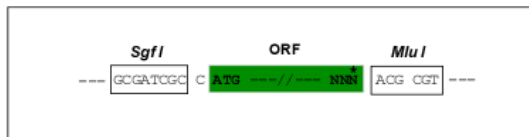
MVEPGQDLLLAALSESGISPNDLFDVDGGDAGLATPTPPSVQQSVPLSALELGLLETEAAVPVKQEPEPMS
 TPALLNVRQPPSTTTFLNQLNQLPTLGSTIVMTKTPPATNTRQTITLTKFIQTTANTRPSVSAPAVRN
 AMPAAPSKDQVQLKDLLKNNSLNELMKLKPPANIAQPVATAATDVSNGAVKKESSNKEVARIWINDMKMR
 SFSPMTKVPVVKEEPEEEDEEMGHAETYAEMYPIKLIKIGLRHPDAVVETSSLSVTPPDVWYKTSIS
 EETIDNGWLSALQLEAVTYAAQQHETFLPNGDRAGFLIGDGAGVKGRTIAGIIYENYLLSRKRALWFSV
 SNDLKDAERDLRIDIGAKNILVHSLNKFYKGISSKHNGSVKKGVIKIFATYSSLIGESQSGGKYKTRKQL
 LHWCGDDFDGVI VFDVDECHKAKNLCVPGSSKPTKTGLAVLELQNKLPKARVYASATGASEPRNMYMNR
 GIWGEPTPFREFSDFIQAVERRGVGAMEIVAMDMKLRGMYIARQLSFTGVTFKIEEVLLSQSVYKMYNKA
 VKLWVIARERFQQAADLIDAEQRMKSMWGQFSAHQRFKYLCIASKVKRVVQLAREEIKNGKCVVIGL
 QSTGEARTLEALEEGGELNDFVSTAKGVLQSLIEKHFPAPDRKKLYSLLGIDL TAPSNNSSPRDSPCKE
 NKIKRKGEEITREKARKVGGTGSSSDDSGSESVSDNDESDYESSKNMSSGDDDDFNPFREDESSEDN
 EDDPWLIRKDHKSKDKKKKSIDPDSIQSALLASGLGSKRPSFSAPVISPASNSAPANSNSNSSSLV
 TSQDAVERAQMKDLDLKLKLAEDLPPNTLDELIDELGGPENVAEMTGRKGRVVSNDGDSISYERSE
 LDVPEILNITEKQRFMDGDKNIAIIEAASSGISLQADRRAKNQRVHMTLELPWSADRAIQFGRTH
 RSNQVTAPEYVFLISELAGEQRFASIVAKRLESLGALTHGDRRATESRDLSRFNFNDKYGRNALEIVMKS
 IVNLDSPMVSPDPYGEFFKDVQRGLIGVGLINVEDRSGILTLDKDYNNIGKFLNRILGMEVHQNALF
 QYFADTLTAVVQNAKNGRYDMGILDGSGDEKVRKSDVKKFLTPGYSTSGHVELYTIISVERGMSWEEAT
 KIWAEITGPDGFYLSLQIRNNKTAIVKEVNPKKKFLIYRPNTGKQLKLEIYADLKKKYKVVSDDA
 LVHWDQYNSSADCTHAYWRGNCKKASLGLVCEIGLCRRTYYVLCGSLVSVWTKVEGVLASVSGTNNVKM
 QIVRLRTEDGQRIVGLIIPANCVSPLVNLSTSDQSQQLAVQQQLWQQHHPQSI TNLSNL

TRTRPLEQKLISEEDLAANDILDYKDDDDKV

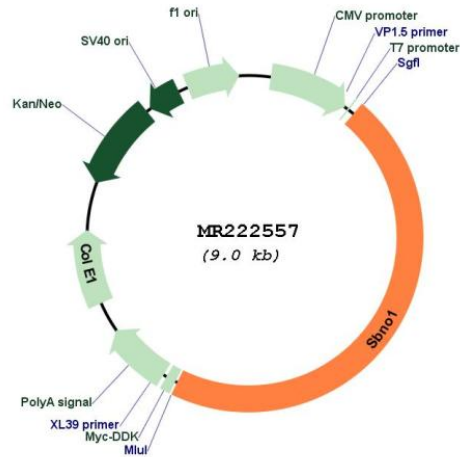
Restriction Sites:
 Cloning Scheme:

SgfI-MluI

Cloning sites used for ORF Shuttling:



* The last codon before the Stop codon of the ORF

Plasmid Map:


ACCN: NM_001081203

ORF Size: 4173 bp

OTI Disclaimer: The molecular sequence of this clone aligns with the gene accession number as a point of reference only. However, individual transcript sequences of the same gene can differ through naturally occurring variations (e.g. polymorphisms), each with its own valid existence. This clone is substantially in agreement with the reference, but a complete review of all prevailing variants is recommended prior to use. [More info](#)

OTI Annotation: This clone was engineered to express the complete ORF with an expression tag. Expression varies depending on the nature of the gene.

Components: The ORF clone is ion-exchange column purified and shipped in a 2D barcoded Matrix tube containing 10ug of transfection-ready, dried plasmid DNA (reconstitute with 100 ul of water).

Reconstitution Method:

1. Centrifuge at 5,000xg for 5min.
2. Carefully open the tube and add 100ul of sterile water to dissolve the DNA.
3. Close the tube and incubate for 10 minutes at room temperature.
4. Briefly vortex the tube and then do a quick spin (less than 5000xg) to concentrate the liquid at the bottom.
5. Store the suspended plasmid at -20°C. The DNA is stable for at least one year from date of shipping when stored at -20°C.

RefSeq: [NM_001081203.2](#)

RefSeq Size: 10071 bp

RefSeq ORF: 4176 bp

Locus ID: 243272

Cytogenetics: 5 F

MW: 154.4 kDa