

## Product datasheet for **MR222532**

### Adam15 (NM\_001037722) Mouse Tagged ORF Clone

#### Product data:

Product Type:	Expression Plasmids
Product Name:	Adam15 (NM_001037722) Mouse Tagged ORF Clone
Tag:	Myc-DDK
Symbol:	Adam15
Synonyms:	AD56; MDC15; metar
Mammalian Cell Selection:	Neomycin
Vector:	pCMV6-Entry (PS100001)
E. coli Selection:	Kanamycin (25 ug/mL)



[View online »](#)

**ORF Nucleotide Sequence:**

>MR222532 representing NM\_001037722  
 Red=Cloning site Blue=ORF Green=Tags(s)

TTTTGTAATACGACTCACTATAGGGCGGCCGGGAATTCGTCGACTGGATCCGGTACCGAGGAGATCTGCC  
 GCC**CGCATCGCC**

ATGCGGCTGGCGTCTCTGGGCTCTGGGACTCCTGGGCGGGCAGCCCTCGGCCCTCCCCCGCGTGC  
 CAAATATAGGAGGCACTGAGGAAGAGCAGCAAGCCAGCCAGAGAGGACGCTGAGTGGATCCATGGAGAG  
 CCGGGTTGTTTACGAGACAGCCCCCAATGAGCCTAGCAGACGTGCTTCAGACTGGTTTACCTGAGGCCCTG  
 AGGATTTCTTGGAGCTGGACAGTGAAGTGCATGTCTGGAGCTTCTACAAAATAGAGATCTAATCCCTG  
 GCCGCCAACTCTGGTGTGGTACCAGCCTGATGGCACCCGAATGGTCAGCGAGGGCTACAGTCTAGAAAA  
 CTGCTGTACCGAGGACGAGTGCAGGGCCACCCAGCTCCTGGGTGTCCCTCTGTGCCTGCTCTGGGATC  
 AGGGGGCTCATTGCTCTGCCAGAGAGAGGCTATACACTGGAGCTGGGCCCTGGGGACCTTCAGCGTC  
 CTGTCAATTTCTCGGATCCAAGACCCTGTTGCTGGGCCACACCTGTGCCCAAGCTGGCATGCCTCTGT  
 GCCCACTCGGGCAGGACCAGACCTCCTTCTGGAACAGCATCACGCTCACAGGCTTAAGCGAGATGTAGTA  
 ACAGAGACGAAAATTGTGGAGTTGGTGATTGTGGCTGATAATTCAGAGGTCAGAAAAGTACCTGACTTCC  
 AACAACTGCTGAACCGGACACTAGAAGCGGCTCTCTTGCTAGACACGTTCTTCCAGCCCTGAATGTCCG  
 GGTAGCCCTTGTGGGCTAGAGGCATGGACCCAGCACAACCTGATAGAAATGAGCTCCAACCCAGCTGTC  
 CTGCTAGACAACCTCCTCCGCTGGCGCCGGACAGACTTGTGCCTCGACTGCCCATGACAGTGGCCAAAC  
 TGGTGACTGTAACCTCCTTCTCTGGTCCCATGGTGGGCATGGCCATTGAGAAATCCATCTGTTCCCTGA  
 CTTCTCCGGAGGTGTGAATATGGACCACTCCACAAGCATCTTAGGCGTTGCCCTCCTCGATTGCCATGAA  
 TTGGGCCACAGTCTGGGTTTGGACCATGATTCTCCCGGCACAGCTGTCCCTGTCCAGGTCAGCCCCGG  
 CTAAGAGCTGCATCATGGAGGCCCTCCACAGACTCCTACCAGGTTTGAACCTCAGCAACTCAGCGCCGCA  
 GGCCCTGGAAGGCCCTCCTGGAAGGAATGGCAGCTGCCTCTCGAACGGCAACCCAGCCTGGCCCT  
 ATGTCCTCTTTGTGGAAATATGTTTGTGGACCCCGGAGAGCAGTGTGACTGTGGCTTCCAGATGAAT  
 GCACTGATCCCTGCTGTGACATTTACCTGCCAGCTGAGGCCAGGAGCGCAGTGTGCATCTGATGGACC  
 CTGTTGTCAAACCTGCAAGTTGCACCCAGCTGGTTGGCTGTGCCGCCCTCCACAGACGATTGTGATCTG  
 CCTGAGTTCTGCCAGGAGATAGCTCTCAGTGCCCGTCTGACATCAGACTTGGGGACGGTGAACCTGTG  
 CTAGTGGAGAGGCTGTGTATGCATGGGCGTGTGCCTCCTATGCCCGCAGTGCCAGTCACTTTGGGG  
 ACCCGGGGCCAGCCTGTGCGCCACTTTGCCTCAAACAGCCAACTCGGGTAAATGCCTTTGGGAGC  
 TGTGGGCGCAGCCCTGGTGGTAGCTACATGCCTTGTGCCCTAGAGATGTCATGTGTGGCAACTGCAGT  
 GCCAGTGGGGTAGGAGCCAGCCTCTGTTGGGCTCAGTCCAAGATCGGCTCTCGGAGGTCCTGGAAGCCAA  
 CGGGACACAGTTAACTGCAGCTGGGTGGACCTGGACCTGGGCAATGATGTGGCCAGCCTCTTCTGGCT  
 CTGCCTGGCACTGCCTGTGGTCTGGCCTGGTGTGCATCGGCCACCGATGCCAGCCCGTGGATCTCCTGG  
 GAGCACAGGAATGTGAAGAAAAATGCCACGGCCATGGGGTCTGTGACAGCAGCGGGCACTGCCGCTGTGA  
 AGAGGGCTGGGCACCTCCAGACTGCATGACCCAGCTCAAAGCAACCAGCTCCCTGACCACAGGCCTGCTC  
 CTCAGCCTCCTGTTGTTATTGGTCTCGTACTACTTGGTGCCAGCTACTGGCACCGTGCCCGCTGCATC  
 AGCGGCTCTGCCAGCTTAAGGGATCCAGCTGCCAATATAGGGCACCCCAATCCTGTCTCCTGAACGACC  
 AGGACCTCCACAGCGGGCACAGCAGATGACAGGCACTAAGCAAGCTAGTGTGGTCACTTCCAGTGCCC  
 CCTCCAGGCGCTGCCACCTAACCCCGTGCCCAAGAACTCCAGGCTGCGCTGGCTGACCGATCCAATC  
 CCCCCACTCGCCCTCTGCCCGCTGACCCTGTGGTGGAGGCGCCAAAGTCTCAGGGGCTACCAAACCCCC  
 ACCCCCAAGAAAGCCACTGCCTGCCAACCCACAGGGCCAGCACCCACCAGGTGACCTGCCTGGCCAGGA  
 GATGGAAGCTTGGCGCTGGTGGTGCCTCCAGGCCAGCTCCACCACCCCTGCAGCATCTTCGCTTACC  
 TC

**ACGCGT**ACGCGGCCGCTCGAGCAGAACTCATCTCAGAAGAGGATCTGGCAGCAATGATATCCTGGATT  
 ACAAGGATGACGACGATAAGGTTTAA

**Protein Sequence:** >MR222532 representing NM\_001037722  
 Red=Cloning site Green=Tags(s)

```
MRLALLWALGLLGAGSPRSPPLPNIGGTREEEQQASPRTLSGSMESRVVQDSPMSLADVLQTGLPEAL
RISLELDSESHVLELLQNRDLIPGRPTLVWYQPDGTRMVSEGYLENCCYRGRVQGHPSWVSLCACSGI
RGLIVLSPERGYTLELPGDQLQRPVISRIDHLLLGHTCAPSWHASVPTRAGPDLLEQHHHRLKRDVV
TETKIVELVIVADNSEVRKYPDFQQLNRTLEAALLLDTFFQPLNVRVALVGLEAWTQHNLIESSNPVAV
LLDNFLRWRRTDLLPRLPHDSAQLVTVTFSGPMVGMAIQNSICSPDFSGGVNMDHSTSLGVASSIAHE
LGHSLGLDHDSPGHSCPCPGPAPAKSCIMEASTDFLPGLNFSNCSRQALEKALLEGMGSCLFERQPSLAP
MSSLCGNMFVDPGEQDCGPFDECTDPCCDHFTCQLRPGAQCASDGPCCQCKLHPAGWLCRPPTDDCDL
PEFCPGDSSQCPD IRLGDGEPASGEAVCMHGRCASYPARQCQSLWGPQAQAAPLCLQTANTRGNFSGS
CGRSPGGSYMPACPRDVMCGQLQCQWGRSQPLLGSVQDRLSEVLEANGTQLNCSWVDL DLGNDVAQPLLA
LPGTACGPGLVCIGHRCQPVDLLGAQECRRKCHGHGVCDSGHCRCCEGWAPPDCMTQLKATSSLTGGL
LSLLLLLVLLGASYWHRARLHQRLCQLKSSCQYRAPQSCPPERPPPPQRAQQMTGKQASVSVFPPV
PSRPLPPNPVPKKLAALADRSNPPTRPLPADPVVRRPKSQGPTKPPPRKPLPANPQQQHPPGDLPGPG
DGSLPLVPSRPAPPPAASSLYL
```

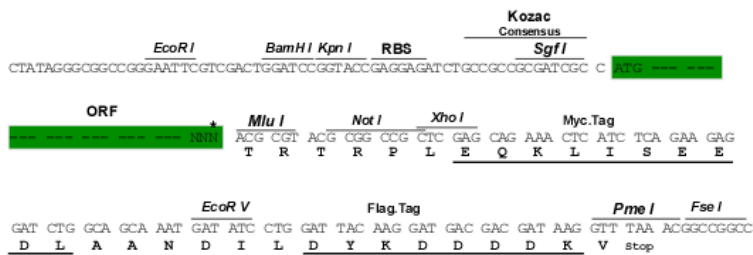
TRTRPLEQKLISEEDLAANDILDYKDDDDKV

**Chromatograms:** [https://cdn.origene.com/chromatograms/mm9003\\_e05.zip](https://cdn.origene.com/chromatograms/mm9003_e05.zip)

**Restriction Sites:** SgfI-MluI

**Cloning Scheme:**

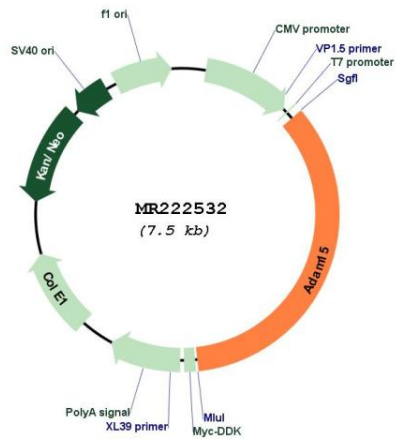
Cloning sites used for ORF Shuttling:



\* The last codon before the Stop codon of the ORF

<b>ACCN:</b>	NM_001037722
<b>ORF Size:</b>	2592 bp
<b>OTI Disclaimer:</b>	The molecular sequence of this clone aligns with the gene accession number as a point of reference only. However, individual transcript sequences of the same gene can differ through naturally occurring variations (e.g. polymorphisms), each with its own valid existence. This clone is substantially in agreement with the reference, but a complete review of all prevailing variants is recommended prior to use. <a href="#">More info</a>
<b>OTI Annotation:</b>	This clone was engineered to express the complete ORF with an expression tag. Expression varies depending on the nature of the gene.
<b>Components:</b>	The ORF clone is ion-exchange column purified and shipped in a 2D barcoded Matrix tube containing 10ug of transfection-ready, dried plasmid DNA (reconstitute with 100 ul of water).
<b>Reconstitution Method:</b>	<ol style="list-style-type: none"><li>1. Centrifuge at 5,000xg for 5min.</li><li>2. Carefully open the tube and add 100ul of sterile water to dissolve the DNA.</li><li>3. Close the tube and incubate for 10 minutes at room temperature.</li><li>4. Briefly vortex the tube and then do a quick spin (less than 5000xg) to concentrate the liquid at the bottom.</li><li>5. Store the suspended plasmid at -20°C. The DNA is stable for at least one year from date of shipping when stored at -20°C.</li></ol>
<b>RefSeq:</b>	<a href="#">NM_001037722.3</a>
<b>RefSeq Size:</b>	3006 bp
<b>RefSeq ORF:</b>	2595 bp
<b>Locus ID:</b>	11490
<b>UniProt ID:</b>	<a href="#">O88839</a>
<b>Cytogenetics:</b>	3 39.07 cM
<b>MW:</b>	93.1 kDa
<b>Gene Summary:</b>	This gene encodes a member of a disintegrin and metalloprotease (ADAM) family of endoproteases that play important roles in various biological processes including cell signaling, adhesion and migration. This gene is prominently expressed in vascular cells, the endocardium, hypertrophic cells in developing bone, and specific areas of hippocampus and cerebellum. The encoded preproprotein undergoes proteolytic processing to generate a mature, functional protein. Mice lacking the encoded protein have increased bone mass resulting from osteoblast proliferation, and exhibit reduced neovascularization in a mouse model for retinopathy. Alternative splicing results in multiple transcript variants encoding different isoforms that may undergo similar processing. [provided by RefSeq, May 2016]

Product images:



Circular map for MR222532