

Product datasheet for **MR222516**

Ablim1 (NM_001103177) Mouse Tagged ORF Clone

Product data:

Product Type:	Expression Plasmids
Product Name:	Ablim1 (NM_001103177) Mouse Tagged ORF Clone
Tag:	Myc-DDK
Symbol:	Ablim1
Synonyms:	2210411C18Rik; 2610209L21Rik; 4833406P10Rik; 9330196J19Rik; AV079770; AW060987
Mammalian Cell Selection:	Neomycin
Vector:	pCMV6-Entry (PS100001)
E. coli Selection:	Kanamycin (25 ug/mL)



[View online »](#)

ORF Nucleotide Sequence:

>MR222516 representing NM_001103177
 Red=Cloning site Blue=ORF Green=Tags(s)

TTTTGTAATACGACTCACTATAGGGCGGCCGGGAATTCGTCGACTGGATCCGGTACCGAGGAGATCTGCC
 GCC**CGGATCGCC**

ATGGTGAAGAAGAAAAGTGGCCATCCTCAGGACCCTACCACTCGTCGGAGAAACCTGTCAATCACTGCC
 ATAAATGCGGGGAGCCATGCAAGGGCGAAGTGCTACGGGTGCAGACCAAGCATTTCCACATCAAATGCTT
 CACCTGCAAAGTGTGCGGCTGCGACCTGGCCAGGGGGGCTTCTTCATAAAGAACGGGGACTATCTGTGT
 ACCCTGGACTACCAGAGGATGTATGGGACACGGTGCCACGGCTGTGGGAGTTTCGTGGAGGGCGAGGTGG
 TAACTGCCCTGGCAAGACCTACCACCCAACTGCTTCGCCTGTACAATCTGCAAGCGCCCAATTTCCACC
 CGGAGACCGAGTCACATTAACGGGAGAGACTGTCTTTGTGAGCTCTGTGCACAGCCGATGTCTTCCAGC
 CCTAAAGAAGCCTCCTGCTCCAGCAACTGCGCCGGCTGTGGAAGGGACATTAAGAACGGACAGGCGCTGC
 TAGCTCTGGACAAGCAGTGGCATTGGGCTGCTCAAGTGAAGTCTGTGGGAAGTCTCACCCGGCGA
 GTACATCAGCAAGGATGGCTCCCATACTGTGAGAAAGACTACCAGGGGCTCTTTGGGGTGAAGTGTGAA
 GCCTGTACACAGTTTATCACAGGAAAAGTCTGGAGGCAGGCGACAAGCATTATCATCCCAGCTGCGCAC
 GATGCAGCAGATGCAATCAGATGTTACAGAAGGGGAAGAAATGTATCTGCAAGGTTCTACCGTGTGGCA
 TCCCGACTGTAAGCAGTCCACTAAGACAGAGGAGAAGCTGCGGCCACCAGGACCTCCTCTGAAAGTATC
 TATTCTAGACCAGGCTCCAGCATCCCTGGTTCACCAGGCCATACTATCTATGCAAAAAGTAGACAATGAAA
 TCCTGGATTACAAGGATTTAGCAGCCATCCCAAGGTCAAGGCGATCTATGACATCGAGCGTCCAGATCT
 CATTACCTATGAGCCTTCTACACATCAGGCTATGAGGACAAGCAGGAGAGACAGAGCCTTGGAGAGTCT
 CCAAGGACTTTGTCTCCAACCTCCATCTGCAGAAGTATCAAGATGTCCGGGATCGGATGATCCACAGGT
 CCACCAGCAGGGCTCCATCAACTCCCCTGTGTATAGCCGGCACAGTTACACTCCAACACTCGTCTCGCTC
 GCCCCAGCACTTCCACCGACCTGGCAATGAGCCGTCCAGCGGCCGGAACCTCCCCTCTCCCCTACCGGCC
 GACAGCCGCCCTCTAACTCCAACCTACGCTCAGGCCCTAAACATTTCCATGTTCCAGATCAAGGGATCA
 ACATTTACCGAAAACCACCCATCTACAACAGCATGCTGCCTTGGCAGCCAGAGCAAGGCTTCAAGAAGA
 TATCATCAAGTTTTCCAAGTTCACAGCAGCCAGGCGCCAGATCCCAACGAGATACCAAAGATTGAGACG
 GACCACTGGCCGGTCCCCCTCACTTGCCCGGTAGGAACTGACCCGAGGCGCAGATCAAGTGGCAGAG
 AGGAAGATGAAGAGGAGCTTTTGGAGACCCGGCAGCTTCAAGAAGAAGAGTTGATGAAGCTCAACTCAGG
 CCTGGGGCAGCTGATCCTGAAGGAAGAGATGGAGAAGGAGAGCAGAGAAAAGAGCATCGCTGGCCAGTCGC
 TATGACTCTCCCCTCACTCAGCTTCCCATGCTCCATCATCTAAAACCTCATCTCTCCCTGGTTATGGAA
 AGAATGGCCTTACCGGCCAGTTTCCACAGACTTCGCTCAGTACAACAGCTACGGAGACATCAGTGGCGG
 AGTTCGAGACTACCAGACCTCCAGATGGCCACATGCCTGCAGTGAAGTGGACAGAGGAGTATCCATG
 CCCAACATGTTGGAACCAAAGATATTTCCATATGAGATGCTCATGGTGACCAACAGAGGGCGCAACAAA
 TCCTGAGAGATGTGGATAGAACCCGGCTAGAGCGCCACTTAGCCCCAGAAGTATTTGGGAGATCTTTGG
 GATGTCCATACAGGAATTTGACAAGTTACCTCTTTGGAGACGCAACGACATGAAGAAAAAGCTAAACTC
 TTC

ACGCGTACGCGGCCGCTCGAGCAGAACTCATCTCAGAAGAGGATCTGGCAGCAAATGATATCCTGGATT
 ACAAGGATGACGACGATAAGGTTTAA

Protein Sequence: >MR222516 representing NM_001103177
 Red=Cloning site Green=Tags(s)

```
MVKEKVAHPQDPHHSSEKPVIIHCHKCGEPCCKGEVLRVQTKHFHIKCFCTCKVCGCDLAQGGFFIKNGDYLC
TLDYQRMYGTRCHGCGEFVEGEVVTALGKTYHPNCFACICKRPFPPGDRVTFNGRDCLCQLCAQPMSSS
PKEASCSSNCAGCGRDIKNGQALLALDKQWHLGCFKCKSCGKVL TGEYISKDGSPEYCEKDYQGLFGVKCE
ACHQFITGKVL EAGDKHYHPSCARCSRCNQMFTEGEEMYLQGSTVWHPDCKQSTKTEEKLRPTRTSSESI
YSRPGSSIPGSPGHTIYAKVDNEILDYKDLAAIPKVKAIYDIERPDLITYEPFYTSGYEDKQERQSLGES
PRTLSPTPSAEGYQDVRDRMIHRSTSQGSINSPVYSRHSYTPPTSRSPQHFHRPNEPSSGRNSPLPYRP
DSRPLTPTYAQAPKHFHVPDQGINIYRKPIYKQHAALAAQSKASEDI IKFSKFPAAQADPNEIPKIET
DHWPGPPSLAAVGTDRRRSSGREDEEEELLRRRQLQEEQLMMLNSGLGQLILKEEMEKESTRERASLASR
YDSPLHSASHAPSSKTSSLPGYGKNGLHRPVSTDF AQYNSYGDISGGVRDYQTL PDGHMPAVRMDRGVSM
PNMLEPKIFPYEMLMVTNRGRNKILRDVDRTRLERHLAPEVFWEIFGMSIQEFDKLPLWRRNDMKKKAKL
F
```

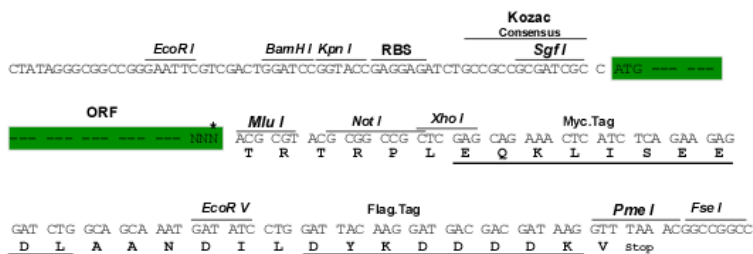
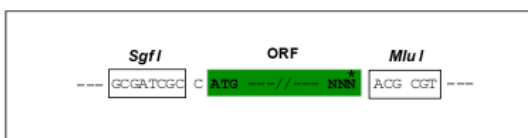
TRTRPLEQKLI SEEDLAANDILDYKDDDDKV

Restriction Sites:

Sgfl-MluI

Cloning Scheme:

Cloning sites used for ORF Shuttling:



* The last codon before the Stop codon of the ORF

ACCN: NM_001103177

ORF Size: 2103 bp

OTI Disclaimer: The molecular sequence of this clone aligns with the gene accession number as a point of reference only. However, individual transcript sequences of the same gene can differ through naturally occurring variations (e.g. polymorphisms), each with its own valid existence. This clone is substantially in agreement with the reference, but a complete review of all prevailing variants is recommended prior to use. [More info](#)

OTI Annotation: This clone was engineered to express the complete ORF with an expression tag. Expression varies depending on the nature of the gene.

Components: The ORF clone is ion-exchange column purified and shipped in a 2D barcoded Matrix tube containing 10ug of transfection-ready, dried plasmid DNA (reconstitute with 100 ul of water).

Reconstitution Method:

1. Centrifuge at 5,000xg for 5min.
2. Carefully open the tube and add 100ul of sterile water to dissolve the DNA.
3. Close the tube and incubate for 10 minutes at room temperature.
4. Briefly vortex the tube and then do a quick spin (less than 5000xg) to concentrate the liquid at the bottom.
5. Store the suspended plasmid at -20°C. The DNA is stable for at least one year from date of shipping when stored at -20°C.

RefSeq: [NM_001103177.3](#)

RefSeq Size: 6261 bp

RefSeq ORF: 2106 bp

Locus ID: 226251

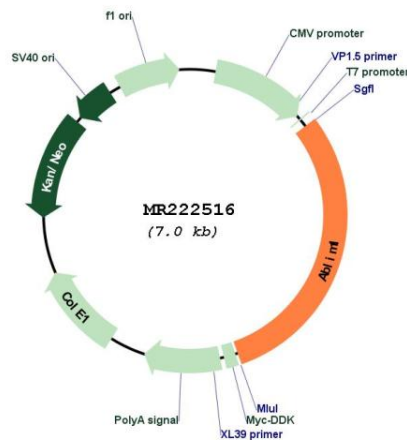
UniProt ID: [Q8K4G5](#)

Cytogenetics: 19 52.09 cM

MW: 79.4 kDa

Gene Summary: May act as scaffold protein (By similarity). May play a role in the development of the retina. Has been suggested to play a role in axon guidance.[UniProtKB/Swiss-Prot Function]

Product images:



Circular map for MR222516