

Product datasheet for **MR222515**

Ablim1 (NM_178688) Mouse Tagged ORF Clone

Product data:

Product Type:	Expression Plasmids
Product Name:	Ablim1 (NM_178688) Mouse Tagged ORF Clone
Tag:	Myc-DDK
Symbol:	Ablim1
Synonyms:	2210411C18Rik; 2610209L21Rik; 4833406P10Rik; 9330196J19Rik; AV079770; AW060987
Mammalian Cell Selection:	Neomycin
Vector:	pCMV6-Entry (PS100001)
E. coli Selection:	Kanamycin (25 ug/mL)



[View online »](#)

ORF Nucleotide Sequence:

>MR222515 representing NM_178688
 Red=Cloning site Blue=ORF Green=Tags(s)

TTTTGTAATACGACTCACTATAGGGCGGCCGGAATTCGTCGACTGGATCCGGTACCGAGGAGATCTGCC
 GCC**CGGATCGCC**

ATGCCATCCTTGCTTGGGTTAAAGTGTCTGGGAAATTGTGCAGCTCTGAGATAGCAAAGTTCCCTCAC
 CAGAGAGAGCCAGCCTCAGGAACCTCCACAGGAGACTGCTTATTGAGGACCTGAGTGTCCCCGAGACTCC
 TGACCCTGCTCATCGCAGGCGTGGCACAGTCATACATCTGGTCTATCTGTATTCTGCTGGCTGTGGTCCA
 CCAGAGCTCAGGTTTAGCAGCTATGATCCATCCGTGGCCATCCTCAGGACCCTCACCCTCGTCGGAGA
 AACCTGTCATTCACTGCCATAAATGCGGGGAGCCATGCAAGGGCGAAGTGTACGGGTGCAGACCAAGCA
 TTTCCACATCAAATGCTTCACTGCAAAGTGTGCGGCTGCGACCTGGCCAGGGGGGCTTCTTCATAAAG
 AACGGGGACTATCTGTGTACCCTGGACTACCAGAGGATGTATGGGACACGGTGCCACGGCTGTGGGGAGT
 TCGTGGAGGGCGAGGTGGTAACCTGGCAGACCTACCACCCCACTGCTTCGCTGTACAATCTG
 CAAGCGCCATTTCCACCCGAGACCGAGTCACATTCAACGGGAGAGACTGTCTTTGTGACGCTCTGTGCA
 CAGCCGATGTCTCCAGCCCTAAAGAAGCTCCTGCTCCAGCAACTGCGCCGGCTGTGGAAGGGACATTA
 AGAACGGACAGGCGCTGCTAGCTCTGGACAAGCAGTGGCATTGGGCTGCTTCAAGTGAAGTCCCTGTGG
 GAAGGTCTCACCGGCGAGTACATCAGCAAGGATGGCTCCCCATACTGTGAGAAAGACTACCAGGGGCTC
 TTTGGGGTGAAGTGTGAAGCCTGTACCAGTTTATCACAGGAAAAGTCTGGAGGCGAGGCGACAAGCATT
 ATCATCCAGCTGCGCACGATGCAGCAGATGCAATCAGATGTTCCAGAAAGGGGAAGAAATGTATCTGCA
 AGGTTCTACCGTGTGGCATCCCGACTGTAAAGCAGTCCACTAAGACAGAGGAGAAGCTGCGGCCACCAAC
 ATCCCGCGCTCTCATCCGATTTCTTTACCCAAAAGTCTGATTGTCGCACAGGACGGTCCCCAGCTC
 TGCAGCTTCTGTGCGCACCCCTGTCTGATGAACCTCAACAAAAACCCAGGCAGCCACCAGGACCTCTC
 TGAAAGTATCTATTCTAGACCAGGCTCCAGCATCCCTGGTTACCAGGCCATACTATCTATGCAAAAAGTA
 GACAATGAAATCCTGGATTACAAGGATTTAGCAGCCATCCCAAGGTCAAGGCGATCTATGACATCGAGC
 GTCCAGATCTCATTACCTATGAGCCTTTCTACACATCAGGCTATGAGGACAAGCAGGAGAGACAGAGCCT
 TGGAGAGTCTCCAAGGACTTTGTCTCCAACCTCCATCTGCAGAAGGTTATCAAGATGTCCGGGATCGGATG
 ATCCACAGGTCCACCAGCCAGGGCTCCATCAACTCCCCTGTGTATAGCCGGCACAGTTACTCTCAACTA
 CGTCTCGCTCGCCCCAGCACTTCCACCGACCTGAGCTCTGTCTCCTGGTGTGCACAGGTGGTCTCCCT
 GCGCACAGCAGCTTCACTCCACCCACAGCGACTCCCGTCCCAACCCCCCTTCCGACACCACTTCCCT
 CCCATGTCAAAGGCAATGAGCCGTCCAGCGGCCGGAACCTCCCTCTCCCTACCGGCCGACAGCCGCC
 CTCTAACTCCAACCTACGCTCAGGCCCTAAACATTTCCATGTTCCAGATCAAGGGATCAACATTTACCG
 AAAACCACCCATCTACAACAGCATGCTGCCTTGGCAGCCAGAGCAAGGCTTCAGAAGATATCATCAAG
 TTTTCAAAGTTCCAGCAGCCAGGCGCCAGATCCCAACGAGATACCAAAGATTGAGACGGACCACTGGC
 CGGGTCCCCCTCACTTGCCGCGTAGGAACTGACCCGAGGCGCAGATCAAGTGGCAGAGAGGAAGATGA
 AGAGGAGCTTTTGGAGACCGGCGAGCTTCAAGAAGAACAGTTGATGAAGCTCAACTCAGGCTGGGGCAG
 CTGATCCTGAAGGAAGAGATGGAGAAGGAGAGCAGAGAAAGAGCATCGCTGGCCAGTCTGATGACTCTC
 CCCTCCACTCAGTTCCCATGCTCCATCATCTAAAACCTCATCTCTCCCTGGTTATGAAAGAATGGCT
 TCACCGGCCAGTTCCACAGACTTCGCTCAGTACAACAGCTACGGAGACATCAGTGGCGGAGTTGAGAC
 TACCAGACCCTCCAGATGGCCACATGCCTGCAGTGAGAATGGACAGAGGAGTATCCATGCCAACATGT
 TGGAAACAAAGATATTTCCATATGAGATGCTCATGGTGACCAACAGAGGGCGCAAAAAATCCTGAGAGA
 TGTGGATAGAACCCGGCTAGAGCGCCACTTAGCCCCAGAAGTATTTGGGAGATCTTTGGGATGTCCATA
 CAGGAATTTGACAAGTTACCTCTTTGGAGACGCAACGACATGAAGAAAAAGCTAAACTCTTC

ACGCGTACGCGGCCGCTCGAGCAGAACTCATCTCAGAAGAGGATCTGGCAGCAATGATATCCTGGATT
 ACAAGGATGACGACGATAAGGTTTAA

Protein Sequence: >MR222515 representing NM_178688
 Red=Cloning site Green=Tags(s)

MPSLLGLKCLGKLCSSSEIGKVSPERASLRNSHRRLIEDLSVPETPDPAHRRRGTVIHLVYLYSAGCGP
 PELRFSSYDPSVAHPQDPHHSSEKPVIIHCHKCGEPCKGEVLRVQTKHFHIKCFCTCKVCGDLAQQGFFIK
 NGDYLCTLDYQRMYGTRCHGCGEFVEGEVVTALGKTYHPNCFACTICKRPFPPGDRVTFNGRDCLCQLCA
 QPMSSSPKEASCSSNCAGCGRDIKNGQALLALDKQWHLGCFKCKSCGKVL TGEYISKDGSPLYCEKDYQGL
 FGVKCEACHQFITGKVLEAGDKHYHPSCARCSRCNQMFTEGEEMYLQGSTVWHPDCKQSTKTEEKL RPPN
 IPRSSDFFYPKSLIRRTGRSPALQLLSPCLMNSNKNRQPTRTSSSEIYSRPGSSIPGSPGHTIYAKV
 DNEILDYKDLAAIPKVKAIYDIERPDLITYEPFYTSYEDKQERQSLGESPRTLSPTPSAEGYQDVRDRM
 IHRSTSQGSINSPVYSRHSYPTT SRSPQHFRPELLSPGVHRWSPLRTSSF STHSDSRNPPFRHHFL
 PHVKGNEPSSGRNSPLPYRPSRPLTPTYAQAPKHFHVPDQGINIYRKPIYKQHAALAAQSKASEDIK
 FSKFPAQAQDPNEIPKIETHWPGPPSLAAVGTDP RRRSSGREDEEELLRRRQLQEEQLMKNLSGLGQ
 LILKEEMEKE SRERASLASRYDSPLHSASHAPSSKTSSLPGYGKNGLRHPVSTDF AQYNSYGDISGGVDR
 YQTLPDGHMPAVRMDRGVSMNMLEPKIFPYEMLMVTNRGRNKILRDVDRTRLERHLAPEVFWEIFGMSI
 QEFDKLPLWRRNDMKKKAKLF

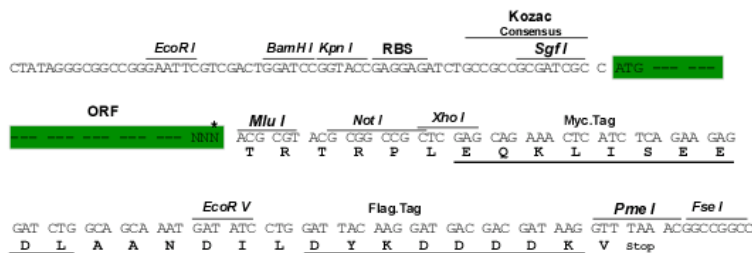
TRTRPLEQKLISEEDLAANDILDYKDDDDKV

Chromatograms: https://cdn.origene.com/chromatograms/mm9098_d12.zip

Restriction Sites: SgfI-MluI

Cloning Scheme:

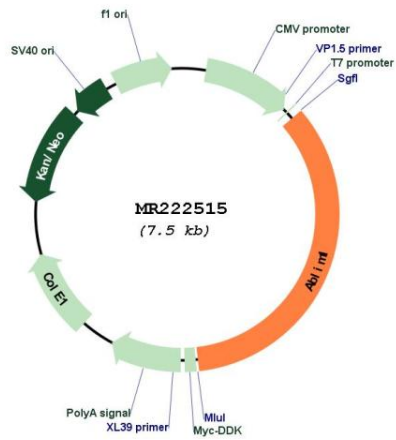
Cloning sites used for ORF Shuttling:



* The last codon before the Stop codon of the ORF

ACCN:	NM_178688
ORF Size:	2583 bp
OTI Disclaimer:	The molecular sequence of this clone aligns with the gene accession number as a point of reference only. However, individual transcript sequences of the same gene can differ through naturally occurring variations (e.g. polymorphisms), each with its own valid existence. This clone is substantially in agreement with the reference, but a complete review of all prevailing variants is recommended prior to use. More info
OTI Annotation:	This clone was engineered to express the complete ORF with an expression tag. Expression varies depending on the nature of the gene.
Components:	The ORF clone is ion-exchange column purified and shipped in a 2D barcoded Matrix tube containing 10ug of transfection-ready, dried plasmid DNA (reconstitute with 100 ul of water).
Reconstitution Method:	<ol style="list-style-type: none">1. Centrifuge at 5,000xg for 5min.2. Carefully open the tube and add 100ul of sterile water to dissolve the DNA.3. Close the tube and incubate for 10 minutes at room temperature.4. Briefly vortex the tube and then do a quick spin (less than 5000xg) to concentrate the liquid at the bottom.5. Store the suspended plasmid at -20°C. The DNA is stable for at least one year from date of shipping when stored at -20°C.
RefSeq:	NM_178688.4
RefSeq Size:	6638 bp
RefSeq ORF:	2586 bp
Locus ID:	226251
UniProt ID:	Q8K4G5
Cytogenetics:	19 52.09 cM
MW:	96.8 kDa
Gene Summary:	May act as scaffold protein (By similarity). May play a role in the development of the retina. Has been suggested to play a role in axon guidance.[UniProtKB/Swiss-Prot Function]

Product images:



Circular map for MR222515