

Product datasheet for MR222482

Med1 (NM_013634) Mouse Tagged ORF Clone

Product data:

Product Type:	Expression Plasmids
Product Name:	Med1 (NM_013634) Mouse Tagged ORF Clone
Tag:	Myc-DDK
Symbol:	Med1
Synonyms:	AI480703; CRSP210; DRIP205; I11Jus15; PBP; Pparbp; TRAP220
Vector:	pCMV6-Entry (PS100001)
E. coli Selection:	Kanamycin (25 ug/mL)
Cell Selection:	Neomycin
ORF Nucleotide Sequence:	>MR222482 representing NM_013634 Red=Cloning site Blue=ORF Green=Tags(s)

TTTTGTAATACGACTCACTATAGGGCGCCGGAATTCGTCGACTGGATCCGGTACCGAGGAGATCTGCC
GCC**CGATCGCC**

ATGAGCTCCCTCCTGGAACGGCTCCATGCAAAATTTAACCAGAACAGACCTTGGAGTGAAACCATTAAGC
TTGTGCGTCAAGTAATGGAGAAGAGGGTCGTAATGAGTCTCGAGGGCATCAGCATTGGTCAGCTGTTT
GGAGACATTGCAGAAGGCTCTCAAAGTAACATCTTTGCCAGCAATGACTGATCGTTTGGAACTATAGCC
AGACAGAAATGGACTGGGCTCTCACCTCAGTGCCAGTGGCACTGAGTGTTACATCAGTCAGATATGTTCT
ATGTGGAAGTGCAGTTAGATCCTGCAGGACAGCTTTGTGATGTCAAAGTGGCTCACCATGGGGAGATCC
TGTGAGCTGTCCAGAGCTGTACAGCAGTTAAGGGAAAAGAATTTGAGGAATTTCCAAGCATCTTAAG
GGTCTTGTTAATCTGTATAATCTCCAGGGGACAACAACTGAAGACTAAAATGTATCTGGCTCTCCAAT
CCTTAGAACAGGACCTTTCTAAAATGGCTATTATGTAAGGCAACCAACGCCGCTCCCTGGATAA
GATTCTTCATGGAAGTGTGGTTATCTCACCCCGGAGTGGGGTCATTTAATGAATATGAAATACTAT
GCCTCTCCATCTGACCTGCTGGATGATAAGACTGCCTCTCCTATCATTTCATGAAAAGAATGTTCCCTC
GGTCTTTGGGAATGAATGCCTCAGTGACAATTGAAGAACCTCTGCTATGTACAACTCCCAATTGCCCC
ATTAATTATGGGGTCACACCCAGCTGACAACAAATGGACCCCTTTCTTCCGCACTACTAGTCCCAAC
AGTGTTGATCTTCTGCGTGTCTTCTTGAATTTCCAGCCAATTCCAGTATCTAAAGCATTGTTC
AGAAAAGTCAAAATGCACAGGAATCCCCTTGTGAGACTCCGCCACTTACCTGCCCTGTATGAACT
CATCACTCAGTTTGTGCTCAAAGGATCTGACCCTTACCTTGAATCACAACATGCGATTTTACGCT
GCTCTCCAGGTCAGCAGCACTGCTATTTCTCAATAAAGATGCTCCTCTTCTGATGGTCAGAGCCTGC
AGGGAACACTGGTCAGCAAAATCACCTCCAGCACCTGGCCGAGTTCCTTATCTTGAATATGATCAG
ACACCAAGTGGCCTATAACTACTAATTGGAAGCTGTGCAAAAGAACTATTTAAAAGAAGATTCTCCT
GGGCTCCTCCAGTTTGAAGTGTGCTCTCTCAGAATCTCGTTCAGTGTATCTTTTCAGCACCTGTGA
ATGACTCCCTTGTGTGTGGTGTGATGGATGTGCAAGACTCAACACATGTGAGCTGTAACACTACAGGG
GCTGTGAGATGCACTAATCTGTACAGACGACTTATTGCCAAAGTTGTTCAAAGATGTATGTCCATTCT
GTGACGATGAGGGCTATTCGGAGGAAGGCTGAAACCATACAGGCTGACACCCAGCACTGTCTCTCATTG



CAGAGACAGTTGAAGACATGGTAAAAAGAACCTGCCCCCGGCTAGCAGCCCAGGGTATGGCATGACCAC
AGGCAACAACCCAATGAGTGGTACCCTACACCAACCAACACCTTTCCGGGGGGTCCCATTACCACCTTG
TTAATATGAGCATGAGCATCAAAGATCGGCATGAGTCGGTGGCCATGGGGAGGACTTCAGCAAGGTGT
CTCAGAACCCAATTTTACCAGTTTGTGCAAATCACAGGGAACGGGGGTCTACCATTGGCTCGAGTCC
GACCCCTCCTCATCACACGCCGCCACCTGTCTCTCGATGGCCGGCAACCAAGAACCACCCGATGCTC
ATGAACCTTCTTAAAGATAAACCCTGCCAGGATTTCTCAACCTTTATGGAAGCAGCCCTTTAGAAAGGC
AGAATCCTCTTCCGGATCACCCCGGATGGAAATGTGCTCGGGGAGCAACAAGGCCAAGAAGAAGAAGTC
GTCAAGAGTCCCACCTGACAAACCCAAGCACCAGACTGAAGACGATTTCCAGAGGGAGCTTTTCCATG
GATGTCGACTCACAGAACCCTATGTTTGACGTCAGCATGACCCTGACGCGCTGGATACACCTCATATCA
CCCCAGCTCCAAGCCAGTGTAGCACTCCCCAGCAACGTACCCACAGCCAGTGTCTACCCCCAGCCAG
TATTCAGAGGATGGTCCGACTGTCCAGTTCAGACAGCATTGGCCAGATGTAAGTATTTCTTTTCCAGAT
ATTGCCGAAGAAGCTTCAAAGCTTCCCAGCAGGATGACTGCCACCAATTGGCACCCTGTTCCGAG
ATTCTCAAGTTCTGGGCATTCTCAGAGTGCCCTCTTTGATTCTGATGTCTTTCAAATAATAATGA
AAATCCATACACTGATCCAGCTGACCTTATTGCAGATGCTGCTGGAAGCCCAATAGTGATTCTCCTACC
AATCATTTTTTCCCTGATGGAGTAGATTTCAATCCTGATTTGTTGAACAGCCAAAGCCAAAGTGGTTTTG
GAGAGGAGTATTTGATGAAAGTAGTCAGAGTGGGGATAATGATGATTTCAAAGGATTTGCATCTCAGGC
ATTAATACATTGGGGATGCCAATGCTTGAGGTGACAATGGGGAGCCAAATTTAAGGGCAGCAGCCAG
GCTGACACGGTGGACTTCAGTATTATATCAGTAGCCGGTAAGGCTTTGGGTGCTGCAGATCTGATGGAGC
ACCACAGTGGGAGTCAGAGTCTTTACTGACCACTGGAGAATTAGGGAAAGAAAAAACTCAAAGAGGGT
GAAGGAAGGCAACGGCACAGGTGCTAGCAGTGGATCAGGTCCAGGGTCCAGACAGCAAGCCAGGCAAGCGC
AGCCGCACTCCCTCCAATGATGGGAAGAGCAAGGATAAGCCTCCAAGCGGAAGAAGGCAGACACTGAGG
GGAAGTCCCCTCATCACAGTTCTTCTAATAGACCTTTACCCACCTACCAGCAGGGTGGTCCAAATC
CCCAGGAGTTCAGGACGATCTCAGACGCCCCAGGTGTTGCCACCCCGCCATTCCCAAGATTACCATT
CAGATTTCTAAAGGACAGTGTGGTGGGCAAGCCCTCCTCTCACAGTCAGTACACTAGCAGTGGTTCTG
TGCTTCTCTGCGAGCAAAAGCCACCATAGTCATTCTTCTCCTCCTCTTCTTCTAGCTTCTGCTTCCAC
CTCAGGCAAGGTGAAAAGCAGTAAATCTGAAGGCTCATCAAGTTCCAAGCTCAGTGGCAGTATGATGCT
AGCCAAGGGTCTTCTGGATCCAGCCAGTCCAAAAATTCATCTCAGACTGGGGGGAAGCCAGGCTCCTCTC
CCATTACCAAACATGGACTGAGCAGTGGGTCCAGCAGTACCAAGATGAAACCTCAAGGCAAGCCATCCTC
CCTTATGAACCTTCTATAAGTAAGCCAAACATATCCCCTTCCATTCAAGGCCTCCCGGAGGCTCAGAT
AAGCTTGCTCTCAATGAAGCCTGTTCTGGAACCCCCCATCTCTAAAGCCAAGTCCCCTATCAGTT
CAGGTTCCAGTGGTTCTCATGTGTCAGGAAGTCAAGCTCTGGTATGAAGTCATCTTCCAGGTCAGC
ATCCTCAGGCTCAGTGTCTCAAAAAACCCCTCCAGCATCTAATCTTGTACACCATCTTCTCTTCTGTTT
TCTCAAGTGGTTCTTCCATGTATCCTCTCAGAAATCAACATGGCAGTTCCAAAGGGAAATCTCCAGTA
GGAATAAGAAGCCTTCTTGACAGCTGTATAGATAAATGAAGCATGGGGTGGTTACCAGTGGGCCTGG
GGGTGAGGATCCAATAGACAGTCAGATGGGCGCAAGCACAAATCTTCTAACCATCCCATGTCTCCAAA
CATAACACGTGAGGAGGGGAGTTCAGAGCAAACGTGAGAAAAGTGATAAAGACAAATCCAAGGTCTCTG
CTTCTGGGGGTGAGTGGATTCTCTAAGAAGACTTCAGAGTCAAAAAATGTGGGGAGCAGGGGGTGGC
AAAAATCATTATCAGCAAGCAGCAGGAGGCTCCCGAGCATCAAAGCCAAAGTACGCTACAGAAACCT
GGAGAAAGTGGTGGAGATGGGCTCAGGCCACAGATAGCCTCATCAAAGAACTATGGCTCTCCACTTATCA
GTGGTTCCACTCCAAGCACGAACGGGGTCTCCAGCCACAGTAAGTCGCCAGCATATACACCACAGAA
TGTGGACAGTGAAGTGAGTCAGGCTCCTCCATAGCAGAGAGATCCTACCAGAACAGTCCAGCTCAGAG
GATGGTATCCGACCATTCCAGAGTACAGCACTGAGAAGCATAAGAAGCACAAAAAGGAAAAAGAAGAAAG
TCAGAGACAAAGACAGAGACAAGAAGAAGTCTCACAGCATGAAGCCAGAGAACTGGTCAAAATCCCCAT
TTCTTCCAGATCCGACGGCGTCTGTGACAAATAACCCTATCTTATCTGCAGACAGGCTTCTAGGCTCAGC
CCTGACTTCATGATTGGGGAGGAAGATGATGATCTCATGGATGTGGCCCTGATTGGCAAT

ACGCGTACGCGGCCGCTCGAGCAGAAACTCATCTCAGAAGAGGATCTGGCAGCAATGATATCCTGGATT
ACAAGGATGACGACGATAAGGTTTAA

Protein Sequence: >MR222482 representing NM_013634
 Red=Cloning site Green=Tags(s)

MSSLERLHAKFNQNPWSETIKLVRQVMEKRVVMSSGGHQHLVSCLETQKALKVTSPLPAMTDRLIESIA
 RQNLGSHLSASGTECYITSDMFYVEVQLDPAGQLCDVKVAHHGENPVSCPELVQQLREKNFEFESKHLK
 GLVNLYNLPGDNKLTMYLALQSLQDL SKMAIMYWKATNAAPLDKILHG SVGYLTPRSSGHLMMNKYY
 ASPSDLDDDKTASPIILHEKNVPRSLGMNASVTIEGTSAMYKLP IAPLIMGSHPADNKWTPSFSAVTSAN
 SVDLPACFFLKFQPIPVSKAFVQKLQNCCTGIPLFETPPTYLPL YELITQFELS KDPDPLLNHNMRFYA
 ALPGQQHCFYLNKDAPL PDGQSLQGTLVSKITFQHPGRVPLILNMIRHQVAYNTLIGSCVKRTILKEDSP
 GLLQFEVCPLSESRFSVSFQHPVNDSLVCVMDVQDSTHVSKLYKGLSDALICTDDFI AKVVQRCMSIP
 VTMRAIRKAETIQADTPALSLIAETVEDMVKKNLPPASSPGYGMTTGNPNMSGTTTTPTNTFPGGPITTL
 FNMSMSIKDRHESVGHGEDFSKVSQNPILTSLLQITGNGGSTIGSSPTPPHHTPPPVSSMAGNTKNHPML
 MNLLKDNPAQDFSTLYGSSPLERQNSSSGSPRMEMCSGSKAKKKKSSRVPPDKPKHQTEDDFQRELFM
 DVDSQNPMPFVSMADALDTPHITPAPSQCSTPPATYPQPVSHQPQSIQRMVRLSSSDSIGPDVTDILSD
 IAEAEASKLPSTSDDCPPIGTPVRDSSSSGHSQSALFDSDFVQTNNNENPYTDPADLIADAAGSPNSDSPT
 NHFFPDGVDFNPDLLNSQSQSGFGEEYFDESSQSGDNDDFKGFASQALNTLGMPLGGDNGPEPKFKGSSQ
 ADTVDFSIISVAGKALGAADLMEHHSQSPLTTGELGKEKTQKRVKEGNGTGASSGSGPGSDSKPGKR
 SRTPSNDGKSKDKPPKRRKADTEGKSPSHSSNRPF TPPTSTGGSKSPGSSGRSQTTPGVATPPIPKITI
 QIPKGTVMVGKPSHSSQYTS SSVSSSGSKSHSHSSSSSLASASTSGVKVSSKSEGSSSSKLSGMYA
 SQGSSGSSQSKNSSQTGGKPGSSPITKHGLSSGSSSTKMKPQKPSL MNPSISKPNISPHSRPPGSD
 KLASPMKPVPGTPPSSKAKSPISSGSSGSHVSGTSSSSGMKSSSGSASSGVSQKTPPASNSCTPSSSF
 SSSGSSMSSSQNHGSSKSKSPSRNKKPSLTAVIDKLKHGVVTS GPGGEDPIDSQMGASTNSNHPMSSK
 HNTSGGEFQSKREKSDKDKSKVASGSSVDSSKKTSESKNVGSTGVAKIIISKHDGGSPSIKAKVTLQKP
 GESGGDLRPQIASSKNYGSPLISGSTPKHERGSPSHKSPAYTPQNVDSESESGSSIAERSYQNSPSE
 DGIRPLPEYSTEKHKHKKKKEKKKVRDKDRDKKSHSMKPENWSKSPISSDPTASVTNNPILSADRPSRLS
 PDFMIGEEDDLMDVALIGN

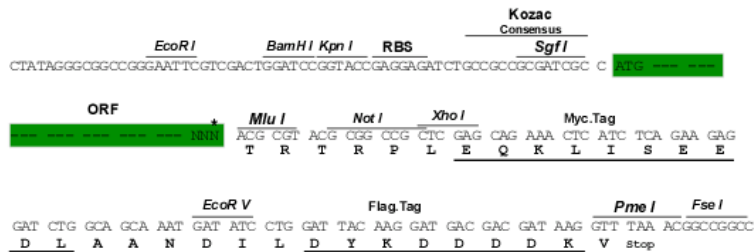
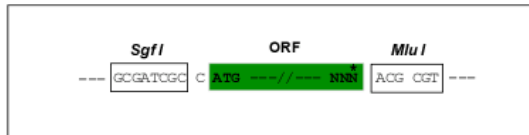
TRTRPLEQKLISEEDLAANDILDYKDDDDKV

Restriction Sites:

SgfI-MluI

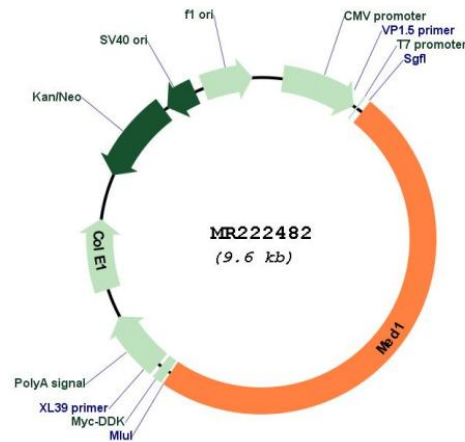
Cloning Scheme:

Cloning sites used for ORF Shuttling:



* The last codon before the Stop codon of the ORF

Plasmid Map:



ACCN: NM_013634

ORF Size: 4680 bp

OTI Disclaimer: The molecular sequence of this clone aligns with the gene accession number as a point of reference only. However, individual transcript sequences of the same gene can differ through naturally occurring variations (e.g. polymorphisms), each with its own valid existence. This clone is substantially in agreement with the reference, but a complete review of all prevailing variants is recommended prior to use. [More info](#)

OTI Annotation: This clone was engineered to express the complete ORF with an expression tag. Expression varies depending on the nature of the gene.

Components: The ORF clone is ion-exchange column purified and shipped in a 2D barcoded Matrix tube containing 10ug of transfection-ready, dried plasmid DNA (reconstitute with 100 ul of water).

Reconstitution Method:

1. Centrifuge at 5,000xg for 5min.
2. Carefully open the tube and add 100ul of sterile water to dissolve the DNA.
3. Close the tube and incubate for 10 minutes at room temperature.
4. Briefly vortex the tube and then do a quick spin (less than 5000xg) to concentrate the liquid at the bottom.
5. Store the suspended plasmid at -20°C. The DNA is stable for at least one year from date of shipping when stored at -20°C.

RefSeq: [NM_013634.2](#), [NP_038662.2](#)

RefSeq Size: 6383 bp

RefSeq ORF: 4683 bp

Locus ID: 19014

UniProt ID: [Q925J9](#)

Cytogenetics: 11 61.75 cM

MW: 165.9 kDa

Gene Summary: Component of the Mediator complex, a coactivator involved in the regulated transcription of nearly all RNA polymerase II-dependent genes. Mediator functions as a bridge to convey information from gene-specific regulatory proteins to the basal RNA polymerase II transcription machinery. Mediator is recruited to promoters by direct interactions with regulatory proteins and serves as a scaffold for the assembly of a functional preinitiation complex with RNA polymerase II and the general transcription factors. Essential for embryogenesis, including development of the central nervous system, heart, liver and placenta and for erythropoiesis. Also required for normal transcriptional control of thyroid-stimulating hormone beta (TSHB) in the pituitary. Acts as a coactivator for GATA1-mediated transcriptional activation during erythroid differentiation of K562 erythroleukemia cells (By similarity).[UniProtKB/Swiss-Prot Function]