

Product datasheet for **MR222459**

Arhgef37 (NM_177828) Mouse Tagged ORF Clone

Product data:

Product Type:	Expression Plasmids
Product Name:	Arhgef37 (NM_177828) Mouse Tagged ORF Clone
Tag:	Myc-DDK
Symbol:	Arhgef37
Synonyms:	4933429F08Rik
Mammalian Cell Selection:	Neomycin
Vector:	pCMV6-Entry (PS100001)
E. coli Selection:	Kanamycin (25 ug/mL)



[View online »](#)

ORF Nucleotide Sequence:

>MR222459 representing NM_177828
 Red=Cloning site Blue=ORF Green=Tags(s)

TTTTGTAATACGACTCACTATAGGGCGGCCGGAATTCGTCGACTGGATCCGGTACCGAGGAGATCTGCC
 GCC**CGGATCGCC**

ATGGCTGACTTTGGAGCAGATGAGGCCTCTTCCAAGTCAGAGAGTCCTGAGCAGGAAGATCAGGGCTCTG
 AGGACAGATCGCTGCTCCATCAGAGGCTGGCCATCAGAGAGCTCATTGACACAGAAGTCTCTACTTACA
 CATGCTCCGACTCTGTGCCCTGTACATCAGAAGCCACCTACAACAGCTGCCACCAGGCGATCTGGACATC
 CTGTTCTCCAACATCGATGACATCATCCAAGTGAGCAGCAGGTTCCCTCGAGGGTGCAGGAGACAGCCT
 GCAGGGAAGAGGAGCAAGCGCACCTGATTGGTAACTTATTCTTGGAAATCCAAGAGGAGTTTGAACAAGT
 CTATAAGTCTACTGTGCCAACTATGACCAGGCCCTGCTGCTGGTCAAGGCGTACCAGAAGGAGCCAGAA
 CTGCAGAAGGAGATCCAGGGCATCATCGAAGCTGCCATGCCACAAGCTGGACCTTCGGGTCTCAGTTTCT
 TCCTTGTGATCCCTCTACAGAGGATTACCAAGTACCCCTCCTGCTGCAGAAAATCTGGAGAACACACC
 TGCAGATGCCAGCGCCCACCCTGCCCTCAGAGAGCCACCTCTGCCCTCCAGGATGTGAACGGCAATATC
 AACGAATACAAGATGCGCAAGGAAGTGGCTTAAAGTATACCAAAGTGGAGCAGCTGAGCCTTCGGGAGC
 GGCTGGCCCGCATCAACACACATACTCTTTCAAAGAAGACCACCAGACTGAGCCAGATGTGAAGCAGGA
 GGCGGGGCTTGTATCCCGGACAGAAGACAAGGAATTTGATGACCTGGAGGAGAGATTCCAGTGGGTGCT
 CTGTGTGTGAAGGAGCTCAGAAACAATGTGGTCGATTTTCATGGTAATCTGGAGGTTTTCTCAGCTTCC
 GGCCACACGAACGGAGCCTGGATATCCCTGGGGACCTGCGGAGCAGTACTGCAGCCTAGCGAGGGACCT
 TCAGCTCCATGCCTTCTGCAGTTAAGCAGCGGTTAAGAAGCCTGGTGTGGCAACCATTGTGCAGTCTG
 GCCAGAGCCCTGGCTGGTCTCAGAACTGATCAAGAAGCGCCTGGACAACTCCTGGACTTCGATCGAG
 TAGAGGAGAAGCTGTTAGATGTGGCAGCGTGACCTGGGAGGAGGAGGCAGCCCGCAGCAATACCAGGC
 GCTCAACTCCTTACTAGTGGCCGAGCTCCACAGTTTAAACCAACTCGTCATGCAGTGGCTGGGTGAGATC
 CTGTGCACATTTGTGGTCTCCAGAGAGACCTCGCCGATCAAGTGTACGAAGGGCAGAGAGCACCATGG
 CTCTGCTGCCTCATCACCACGTCTCAGAGCCGGACTTCCAGAAGCTGCTGGAGCACACACTAGGCCAGAG
 CAGCAGTCAGCTCCGCTCTTTCAGGAGAGCTTGAAGAAGGTGCTTCCACCCTCCACCCTCAGCCACTC
 CTTCCAGGGTCTGAACACCAGATGCAGGCTCTCCTTACCAGATATGGCCCTGAGAAGCTATACCAGGTGT
 CAAGCAACATCAACGGGACTGGGACTCTGGACCTGACCCTGCTGCGGGGCCAAATCGTGGCCCTTCTACA
 AAACAAGGATACCAAAGGCAACAACAGTCGCTGGCTGGTAGACACAGGGGACACCGGGGCTATGTGCCA
 GCTGGAAAATTCAGTTATACCACCCATCATTCCCAGTGAGAAGGAGCTCAGAGGCCAGACAGGGACAC
 ATGAAGACTCCTGGCTTCCAGCCCCAGAGCCCACCCAGCTCTCTGTTCCCACTGTCCAACCATGAGTCA
 GGTGGTGGCAGTATACCTTTTGTGGCCAGAAGCACCCACGAAGTGTACAGGCAGGCCAGCCTGTG
 ACCATCTAGAGGCCAAGACAAGAAGGGGAACCCAGAATGGAGCCTGGTGGAAAGCAAACGGACAGAGGG
 GCTATGTGCCTTCCAACCTTCTAGCCAGGACCCCAAGCCCAACTCCCTGGGGCTGGAATCTTCCCTCT

ACGCGTACGCGGGCCGCTCGAGCAGAACTCATCTCAGAAGAGGATCTGGCAGCAATGATATCCTGGATT
 ACAAGGATGACGACGATAAGGTTTAA

Protein Sequence: >MR222459 representing NM_177828
Red=Cloning site Green=Tags(s)

MADFGADEASSKSESPQEEDQGSSEDRSLHQRLAIRELIDTEVSYLHMLRLCASDIRSHLQQLPPGDLDI
 LFSNIDDIQVSSRFLRGLQETACREEEQAHLIGNLFLEFQEEFEQVYKVCANYDQALLVKAYQKEPE
 LQKEIQGIEEAAMPQAGPSGLSFFLVIPLQRITKYPLLLQKILENTPADASAHPALQRATSALQDVNGNI
 NEYKMRKEVALKYTKVEQLSLRERLARINTHTLSKKTTRLSQLKQEAGLVSRTEDEKFDDLEERFQVVS
 LCVKELRNNVDFMGNLEVFLSFRPHERSLDIPGGPAEQYCSLARDLQLHAFLOFKQRLRSLVWQPLCSL
 ARALAGPQNLIKKRLDKLLDFDRVEEKLLDVGSVTWEEEAARHEYQALNSLLVAELPQFNQLVMQWLGQI
 LCTFVVLQRDLADQVLRRAESTMALLPHHVSEPDFQKLEHTLGQSSQLRFLQESFEKVLPPSTTQPL
 LPGSEHQMQALLTRYGPEKLYQVSSNINGTGTLDLTLRGQIVALLQNKDTGNNSRWLVDGGRGYPV
 AGKQLYHPIIPSEKELRGQTGTHEDSWLPAPEPTQLSVPTVPTMSQVVAVYPPFVARSTHELSQLAGQPV
 TILAEAQDKKGNPEWSLVEANGQRGYVPSNFLARTPSPTPWGWNLPS

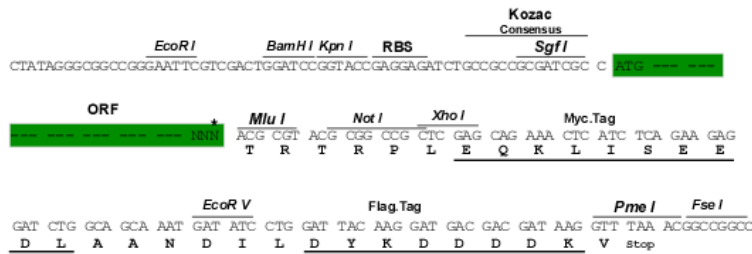
TRTRPLEQKLISEEDLAANDILDYKDDDDKV

Chromatograms: https://cdn.origene.com/chromatograms/mm9048_g01.zip

Restriction Sites: Sgfl-MluI

Cloning Scheme:

Cloning sites used for ORF Shuttling:



* The last codon before the Stop codon of the ORF

ACCN: NM_177828

ORF Size: 2028 bp

OTI Disclaimer: Due to the inherent nature of this plasmid, standard methods to replicate additional amounts of DNA in E. coli are highly likely to result in mutations and/or rearrangements. Therefore, OriGene does not guarantee the capability to replicate this plasmid DNA. Additional amounts of DNA can be purchased from OriGene with batch-specific, full-sequence verification at a reduced cost. Please contact our customer care team at custsupport@origene.com or by calling 301.340.3188 option 3 for pricing and delivery.

The molecular sequence of this clone aligns with the gene accession number as a point of reference only. However, individual transcript sequences of the same gene can differ through naturally occurring variations (e.g. polymorphisms), each with its own valid existence. This clone is substantially in agreement with the reference, but a complete review of all prevailing variants is recommended prior to use. [More info](#)

OTI Annotation: This clone was engineered to express the complete ORF with an expression tag. Expression varies depending on the nature of the gene.

Components: The ORF clone is ion-exchange column purified and shipped in a 2D barcoded Matrix tube containing 10ug of transfection-ready, dried plasmid DNA (reconstitute with 100 ul of water).

Reconstitution Method:

1. Centrifuge at 5,000xg for 5min.
2. Carefully open the tube and add 100ul of sterile water to dissolve the DNA.
3. Close the tube and incubate for 10 minutes at room temperature.
4. Briefly vortex the tube and then do a quick spin (less than 5000xg) to concentrate the liquid at the bottom.
5. Store the suspended plasmid at -20°C. The DNA is stable for at least one year from date of shipping when stored at -20°C.

RefSeq: [NM_177828.4](#), [NP_808496.2](#)

RefSeq Size: 3234 bp

RefSeq ORF: 2031 bp

Locus ID: 328967

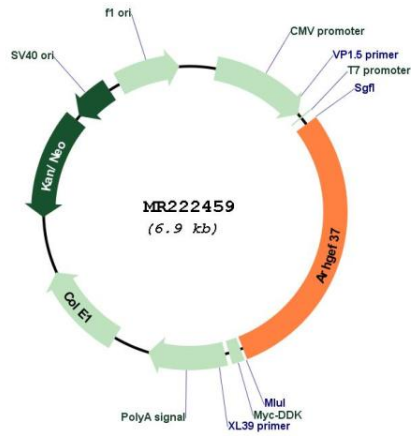
UniProt ID: [A11GU4](#)

Cytogenetics: 18 E1

MW: 77 kDa

Gene Summary: May act as a guanine nucleotide exchange factor (GEF).[UniProtKB/Swiss-Prot Function]

Product images:



Circular map for MR222459