

Product datasheet for **MR222439**

Mid2 (NM_011845) Mouse Tagged ORF Clone

Product data:

Product Type:	Expression Plasmids
Product Name:	Mid2 (NM_011845) Mouse Tagged ORF Clone
Tag:	Myc-DDK
Symbol:	Mid2
Synonyms:	FXY2; Trim1
Mammalian Cell Selection:	Neomycin
Vector:	pCMV6-Entry (PS100001)
E. coli Selection:	Kanamycin (25 ug/mL)



[View online »](#)

ORF Nucleotide Sequence:

>MR222439 representing NM_011845
 Red=Cloning site Blue=ORF Green=Tags(s)

TTTTGTAATACGACTCACTATAGGGCGGCCGGGAATTCGTCGACTGGATCCGGTACCGAGGAGATCTGCC
 GCC**CGGATCGCC**

ATGGAACACTGGAGTCAGAATTGACCTGTCCAATCTGCCTCGAGTTGTTTGAAGACCCCTTCTGCTTC
 CTTGTGCTCACAGCCTATGTTTTAGCTGTGCCACCGCATCTTGGTCTCAAGCTGCAGCTCTGGTGAATC
 CATTGAACCCATTACTGCTTCCAGTGTCTACATGCAGGTATGTTATCTCGCTGAATCACCGGGGCTG
 GATGGCCTCAAGAGGAATGTGACCCTGCAGAACATTATTGATCGCTTCCAGAAGGCTTCAGTCAGTGGGC
 CCAATTCTCCAAGTGAGAGCCGCCGGGAGAGGACTTACAGGCCTAGCTCCGCCATGTCGAGTGAGAGAAT
 TGCATGTCAATTCTGTGAGCAGGACCCTCCGAGAGATGCTGTAAGACGTGCATCACCTGTGAGGTCTCC
 TACTGTGACCGTTGCCTTCGGGCCACACACCCCAACAAGAAACCTTTACCAGCCATCGCTGGTGAAC
 CAGTTTCAGACACACATCTTCGAGGGATTACCTGCCTGGACCACGAGAATGAGAAGTGAACATGTACTG
 TGTATCTGATGATCAATTGATCTGTGCCTTATGCAAACCTGGTGGTTCGTCACCGAGACCATCAGGTCGCT
 TCTCTGAATGATCGATTTGAGAACTAAAGCAAACCTCTCGAGATGAACCTACCAACCTGGTTAAGCGCA
 ACAGTGAAGTAAAAATCAAATGGCCAACTAATACAGATCTGCCAGCAAGTTGAGGTGAATACTGCTAT
 GCATGAGGCAAACTTATGGAAGAATGTGACGAGTTGGTAGAGATCATCCAGCAGAGGAAACAAATGATT
 GCTGTCAAATCAAAGAGACAAAGGTTATGAACTGAGAAAGTTGGCACAGCAGGTTGCTAATTGCCGCC
 AGTGTCTTGAGCGGTCAACAGTCTCATCAACCAAGCTGAGCATATCCTAAAGGAAAAAGACCAAGCAGC
 GTTTCTGCAGTCTGCAAAAAACATTGCCGAGAGGGTCGCTATGGCAACTGCATCTTCGCAAGTTCTGATT
 CCAGACATCAATTTAATGATGCCTTTGAAAACCTTGTCTTAGATTTTCTAGAGAAAAGAACTATTGG
 AGGGCTAGACTATTTAACAGCTCCAAACCCACCATCTATCCGAGAAGAGCTCTGTACTGCTTCCCATGA
 CACCATTACAGTCCACTGGATCTCAGACGACGAATTCAGCATCAGCTCCTATGAGCTTCAGTACACCATA
 TTCACTGGCCAGGCTAATTCATCAGCCTGTACAATTCAGTGGATAGCTGGATGATTGTGCCCAACATTA
 AGCAGAACCATTACACAGTTCATGGACTCCAGAGTGGGACACGCTACATCTTTATCGTGAAGCCATAAA
 TCAAGCAGGCAGCCGGAACAGCGAACCCACCAGACTAAAAACGAACAGCCAACCATTTAACTAGATCCC
 AAAATGACTCACAAGAAGTTGAAGATCTCCAATGATGGATTGCAGATGGAGAAGGATGAGAGCTCTCTGA
 AGAAGAGCCACACTCCGGAGAGATTTAGTGGCACAGGGTGTATGGGGCAGCAGGAAATATATTCATCGA
 CAGTGGCTGCCACTACTGGGAGGTGGTCATGGGTTCTTCAACATGGTATGCTATTGGTATTGCCTACAA
 TCAGCTCAAAGAATGAGTGGATTGGCAAGAATGCCTCTCCTGGGTCTCTCTCGATGCAACAGTAACT
 TCGTGGTTCGGCACAACAACAAGGAAATGCTGGTGGATGTGCCCCACAGTTGAAGCGTCTAGGTGTCT
 TCTGGATTATGACAACAACATGCTGTCTTTCTATGACCCAGCTAACTCTCTCCATCTTCATACTTTTGT
 GTTACCTTCATTCTCCAGTTTGTCCAACATTCACAATCTGGAACAAATCCCTAATGATTCTTTCTGGCT
 TGCTGCCCTGATTTTATTGATTATCCTGAGCGGCAGGAATGCAACTGCAGGCCCAAGAAATCCCTTA
 TGTGTCAGGGATGAAAGCTTGCCAT

ACGCGTACGCGGCCGCTCGAGCAGAACTCATCTCAGAAGAGGATCTGGCAGCAATGATATCCTGGATT
 ACAAGGATGACGACGATAAGGTTTAA

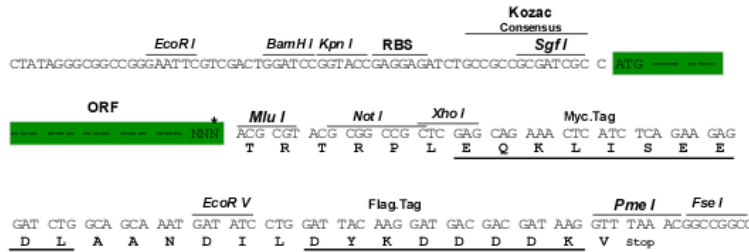
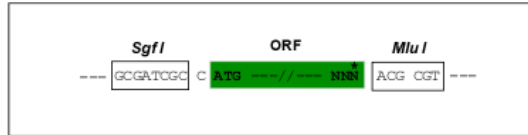
Protein Sequence: >MR222439 representing NM_011845
 Red=Cloning site Green=Tags(s)

METLESELTCPICLELFEDPLLLPCAHSCLFSCAHRILVSSCSSGESIEPITAFQCPTCRYVISLNHRGL
 DGLKRNVTLQNIIDRFQKASVSGPNPSESRRERTYRPSAMSSERIAQCFCEQDPPRDVKTCTICEVS
 YCDRCLRATHPNKKPFTSHRLVEPVSDTHLRGITCLDHENEKVNMYCVSDDQLICALCKLVGRHRDHQVA
 SLNDRFEKLRQTLEMNLTNLVKRNSELENQMAKLIQICQQVEVNTAMHEAKLMEECDELVEIIQQRKQMI
 AVKIKETKVMKLRKLAQQVANCRQCLERSTVLINQAEHILKENDQARFLQSAKNIAERVAMATASSQVLI
 PDINFNDAFENFALDFSREKKLLEGLDYL TAPNPPSIREELCTASHDTITVHWISDDEFSSISSELYQYTI
 FTGQANFISLYNSVDSWMIVPNIKQNHYTVHGLQSGTRYIFIVKAINQAGSRNSEPTRLKTNSQPFLKDP
 KMTHTKLIKISNDGLQMEKDESSLKKSHTPERFSGTGCGYGAAGNIFIDSGCHYWEVVMGSSTWYAI
 GAIYK SAPKNEWIGKNASSWVFSRCNSNFVVRHNNKEMLVDPVPPQLKRLGVLLDYDNMMLSFYDPANSLHLHTFD
 VTFILPVCPTFTIWNKSLMILSGLPAPDFIDYPERQECNCRPQESPYVSGMKACH

TRTRPLEQKLISEEDLAANDILDYKDDDDKV

Chromatograms: https://cdn.origene.com/chromatograms/mm9089_e08.zip
Restriction Sites: SgfI-MluI
Cloning Scheme:

Cloning sites used for ORF Shuttling:



* The last codon before the Stop codon of the ORF

ACCN: NM_011845

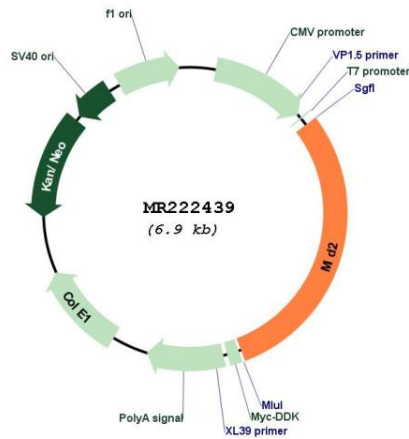
ORF Size: 2055 bp

OTI Disclaimer: The molecular sequence of this clone aligns with the gene accession number as a point of reference only. However, individual transcript sequences of the same gene can differ through naturally occurring variations (e.g. polymorphisms), each with its own valid existence. This clone is substantially in agreement with the reference, but a complete review of all prevailing variants is recommended prior to use. [More info](#)

OTI Annotation: This clone was engineered to express the complete ORF with an expression tag. Expression varies depending on the nature of the gene.

Components:	The ORF clone is ion-exchange column purified and shipped in a 2D barcoded Matrix tube containing 10ug of transfection-ready, dried plasmid DNA (reconstitute with 100 ul of water).
Reconstitution Method:	<ol style="list-style-type: none"> 1. Centrifuge at 5,000xg for 5min. 2. Carefully open the tube and add 100ul of sterile water to dissolve the DNA. 3. Close the tube and incubate for 10 minutes at room temperature. 4. Briefly vortex the tube and then do a quick spin (less than 5000xg) to concentrate the liquid at the bottom. 5. Store the suspended plasmid at -20°C. The DNA is stable for at least one year from date of shipping when stored at -20°C.
RefSeq:	<u>NM_011845.3</u>
RefSeq Size:	5916 bp
RefSeq ORF:	2058 bp
Locus ID:	23947
UniProt ID:	<u>Q9QUS6</u>
Cytogenetics:	X 61.35 cM
MW:	77.8 kDa
Gene Summary:	May play a role in microtubule stabilization.[UniProtKB/Swiss-Prot Function]

Product images:



Circular map for MR222439