

Product datasheet for **MR222421**

Klrb1 (NM_001099918) Mouse Tagged ORF Clone

Product data:

Product Type:	Expression Plasmids
Product Name:	Klrb1 (NM_001099918) Mouse Tagged ORF Clone
Tag:	Myc-DDK
Symbol:	Klrb1
Synonyms:	4930431A04Rik; 100043861; Gm4696; Klrb1g; Klrb6; Ly-55; Ly55; NKR-P1G; Nkrp-1e; Nkrp1g
Mammalian Cell Selection:	Neomycin
Vector:	pCMV6-Entry (PS100001)
E. coli Selection:	Kanamycin (25 ug/mL)
ORF Nucleotide Sequence:	>MR222421 representing NM_001099918 Red=Cloning site Blue=ORF Green=Tags(s)

TTTTGTAATACGACTCACTATAGGGCGGCCGGAATTCGTCGACTGGATCCGGTACCGAGGAGATCTGCC
GCC**CGATCGCC**

ATGGATGCACCAAGTCTATGCTGAATTAATTTAGCCGAGACCAGAGGGCTCAGGTGTACATCAGCTC
CATCTCTCCCCAAGATGCCTGTCAGGGACCAGGCTGGCATCGGGTGGCTCTGAACTCGGCTGTGCTGG
GCTGATCTTTCTCTGATGGTACTCAGTGTCTTAGTGGGATTCTGGTGCAAAAACCTCTAATAGAAAA
TGCAGTGTGGCTGTTCAAGAAAACAGGACTGAACCAACAGGGAGATCAGCCACACTAGAGTGCCCGAGAG
ACTGGCATCCACTGTGATAAATGCTTATTTACTTCTCAAACCTCCAGACCTTGGGCTGACGGTCTGGT
TGACTGTAATTTGAAAGGAGCCACTTTGCTGCTCATTCAAGATGAAGAAGAATTGAGATTATTGCAGAAC
TTCTCAAAGGGAAAAGGACAACAATTTTATATTGGACTAAAATATGAAGAAGTGGACAAGTTTTGGAAGT
GGATGAATGGTTCTATTTTAAATACTAATCTATTACAAATCACTGGCAAGGATGAAGAAAACAGCTGTGC
CCTCATCTCACAACAGAAGTGTCTTCTGATTCTGTTCTTCAGACAACCATTGGATCTGCCAAAAGACA
CTGAAACACGTC

ACGCGTACGCGGGCCGCTCGAGCAGAACTCATCTCAGAAGAGGATCTGGCAGCAAATGATATCTGGATT
ACAAGGATGACGACGATAAGGTTTAA



[View online »](#)

Protein Sequence: >MR222421 representing NM_001099918
 Red=Cloning site Green=Tags(s)

MDAPVLYAELNLAETRGLRCTSAPSLPQDACQGGWHRVALKLGAGLIFLLMVL SVLVGFLVQKPLIEK
 CSVAVQENRTEPTGRSATLECPRDWHPHCDKCLFSTS SRPWADGLVDCNLK GATLLLIQDEEELRLLQN
 FSKGKGQFYIGLKYEEVDKVKWWMNGSILNTNLLQITGKDEENSALISQTEVFS DSCSSDNHWICQKT
 LKHV

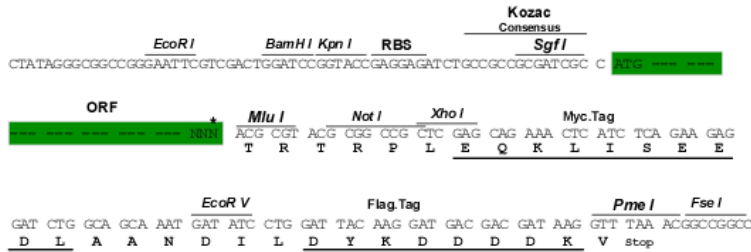
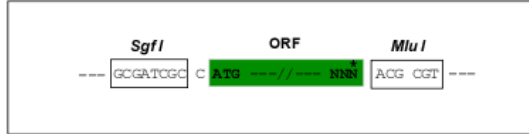
TRTRPLEQKLISEEDLAANDILDYKDDDDKV

Chromatograms: https://cdn.origene.com/chromatograms/mm9074_g06.zip

Restriction Sites: SgfI-MluI

Cloning Scheme:

Cloning sites used for ORF Shuttling:



* The last codon before the Stop codon of the ORF

ACCN: NM_001099918

ORF Size: 642 bp

OTI Disclaimer: The molecular sequence of this clone aligns with the gene accession number as a point of reference only. However, individual transcript sequences of the same gene can differ through naturally occurring variations (e.g. polymorphisms), each with its own valid existence. This clone is substantially in agreement with the reference, but a complete review of all prevailing variants is recommended prior to use. [More info](#)

OTI Annotation: This clone was engineered to express the complete ORF with an expression tag. Expression varies depending on the nature of the gene.

Components: The ORF clone is ion-exchange column purified and shipped in a 2D barcoded Matrix tube containing 10ug of transfection-ready, dried plasmid DNA (reconstitute with 100 ul of water).

Reconstitution Method:

1. Centrifuge at 5,000xg for 5min.
2. Carefully open the tube and add 100ul of sterile water to dissolve the DNA.
3. Close the tube and incubate for 10 minutes at room temperature.
4. Briefly vortex the tube and then do a quick spin (less than 5000xg) to concentrate the liquid at the bottom.
5. Store the suspended plasmid at -20°C. The DNA is stable for at least one year from date of shipping when stored at -20°C.

RefSeq: [NM_001099918.1](#), [NP_001093388.1](#)

RefSeq Size: 645 bp

RefSeq ORF: 645 bp

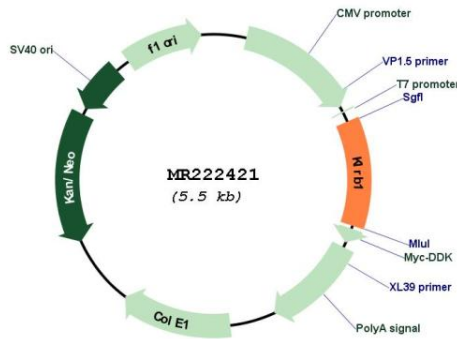
Locus ID: 100043861

UniProt ID: [Q0ZUP1](#)

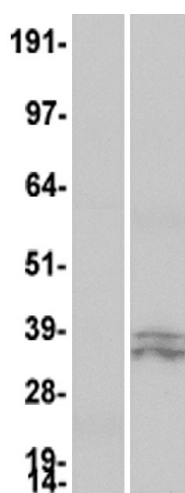
Cytogenetics: 6 63.08 cM

MW: 23.9 kDa

Product images:



Circular map for MR222421



Western blot validation of overexpressed Klrb1 protein using anti-DDK antibody (Cat# [TA50011-100]). Left: Cell lysates from un-transfected HEK293T cells; Right: Cell lysates from HEK293T cells transfected with MR222421 using transfection reagent MegaTran 2.0 (Cat# [TT210002]).