

## Product datasheet for MR222385

### Lama4 (NM\_010681) Mouse Tagged ORF Clone

#### Product data:

Product Type:	Expression Plasmids
Product Name:	Lama4 (NM_010681) Mouse Tagged ORF Clone
Tag:	Myc-DDK
Symbol:	Lama4
Synonyms:	MGC141567
Mammalian Cell Selection:	Neomycin
Vector:	pCMV6-Entry (PS100001)
E. coli Selection:	Kanamycin (25 ug/mL)
ORF Nucleotide Sequence:	>MR222385 representing NM_010681 Red=Cloning site Blue=ORF Green=Tags(s)

TTTTGTAATACGACTCACTATAGGGCGGCCGGAATTCGTCGACTGGATCCGGTACCGAGGAGATCTGCC  
GCC**CGATCGCC**

ATGGGTTGGAGCACAGCTTGGTCTCAGTCTGGCCCTGTGGCTCCTCTGGTGTGCTGTCTGCTCCAACG  
CAGCGTCAGGGGACGGCAATGCGTTTCTTTTTCATCGAGGGGAGCGCAGTGGTCGGCAGGCAAGACCC  
ATCGGAGACTAGCGACTCAGGCGTGACTGGACGCTGCCGCTGCTGCTGAGAGATGTGACGCTGGA  
TTCTTCCGCACACTGTCAGGAGAATGTGCACCCTGTGACTGTAAATGGCAATCCCATGAGTGCTGGATG  
GCTCCGATTCTGTCTGACTGCCAGCGGAACACAACAGGAGAGCACTGTGAAAAATGTCTGGATGGCTA  
TATTGGAGACTCCATCAGAGGCACACCCCGTTCTGCCAGCCGTGCCCTGTCCCTTGCCCCACCTGGCC  
AACTTTGCAGAATCCTGTACAGGAAAAATGGAGCTGTTCCGGTGTATTTGTAAAGAAAAATATGTTGGAC  
CTAACTGTGAAAGATGTGCTCCTGGTACTATGAAAAACCCCTTACTCATTGGAAGCACCTGTAAGAAATG  
TGACTGCAGTGGAAATTCGGATCCCAACCTGATCTTTGAAGACTGTGATGAAATCACTGGCCAGTGCAGG  
AACTGCTTACGAAATACCACCGGATTCAAGTGTGAACGCTGTGCACCTGGTACTATGGAGACGCCAGGA  
CAGCCAAGAACTGTGCAGTGTGCAACTGTGGGGCGGCCCGTGTGACAGTGTAAACCGGAGAGTGTGGGA  
AGAAGGATTTGAAGTCCCTACAGGCTGTGATAAGTGCCTGTTGGACTTGACCGATGACCTGCGATTAGCA  
GCGCTCTCCATCGAAGAGAGCAAAATCCGGGCTGCTGAGCGTGTCTCTGGCGCTGCGGCGCATAGACACG  
TGACCGACATGAACTCTACCATCCACCTCCTCAGAACAAGGCTGTGAGAAAGAGAAAAACCATATACCCCT  
AAGAAAGATACAGATAAAACAACCTCGGAGAACACACTGAGAAGCCTCCTGCCTGATGTAGAGGGACTCCAT  
GAGAAGGGAAGTCAAGCCTCAAGAAAGGATGCTGGTTGAGAAGGAAAGCATGGATACAATTGACCAAG  
CAACCCATCTTGTGAGCAAGCCACAACATGAGGGACAAAAATCCAAGAGATCAACAGCAAGATGCTCTA  
CTATGGAGAGAATCAGGAACTTGCCCCGAGGAAATAGCTGAGAAGCTGGTGTGGCCAGAAAAATGCTG  
GAAGAGATCCGAAGCCGGCAGCCATTCTCACCCATCGGGAGCTGGTGGATGAGGAGGCAGATGAGGCC  
AGGAATTGCTGAGCCAAGCTGAGAACTGGCAGCGGCTGCACAATGACACCCGCTCTTTATCCCCGTGGT  
GCTGGAGCAGCTGGACGACTACAACGCTAAGCTGTCCGACCTCCAGGAATCCATTAACCAGGCCCTGCAG



[View online »](#)

CATGTCAGGGATGCAGAAGACATGAATAGAGCCATCACTTTCAAGCAGCGGGACCATGAGAAACAACATG  
 AGAGAGTGAAGGAACAGATGGAAGTTGTGGGTGCCTCTCTGAGTATGTCTGCAGACTCTTTACCATAACC  
 TCAGCTCACTCTTGAGGAACTTGATGAGATAATAAAGAATGCATCTGGAATTTATGCAGAAATAGATGGA  
 GCCAAAAATGAGCTGCAAGGAAAACATCCAACCTGAGTAACCTCAGTCATGACTTGGTTTCAGGAAGCTA  
 CGGACCATGCATAACAATCTTCAACAGGAAGCCGATGAGCTAAGCAGAAATTTGCACAGTTCAGACATGAA  
 CGGGCTGGTACAGAAGGCTTTGGATGCATAAAGCTCTATGAAAAATCGCCAATTTATGTCAGTGAAGCC  
 AACGAAACAGCAGAAGCTGCTCTGAATATCACTGATCGAATTTATGATGCTGTGAGTGGGATTGACACGC  
 AGATCATTACCATAAAGGATGAAAGTGACAACCTTCTCAATCAAGCCAGAGAGCTGCAGGCCAAGGCAGA  
 TTCTAGCAATGATGAAGCAGTGGCTGACACCAGCAGGCGTGTGGTGGAGCCCTGTGGAGGAAGGGCCGC  
 CTCAGAGACAGACTGAATGATGCTGTTAAGCAACTACAGGCAGCAGAGAGAGGGGACGCCACCAGCGCC  
 TGGGCCAGTCCAAGCTCTTATTGAGGAAGCTAACAGACGACAGCGGCTGTCCAACAGTTACCACACC  
 AATGGCTAACACCTCAGCAACTGGTCCCAGAACCTGCAGACCTTTGACTCATCTGCATATAACTGCA  
 GTGGACTCTGCTCGGACGCAGTGAGAAACCTCACCGAGTTGTCCCCAGCTTCTGGATCAGCTTCGTA  
 CTGTGGAGCAGAAGCGGCTGCAAGCAACATTTCTGCCAGCATCCAGAGGATCCGAGAGCTCATTGCTCA  
 AACCAGGAGTGTGCAAGCAAGTCCAAGTCTCCATGATGTTTGTGGCCAGTCACTGTGCAAGTGCAC  
 CCCAAAGTCAGTGTGGATGACCTGAAGGCTTCCATCCATCAGCTTGTACATGAAGCCTCTCCAAGC  
 CGGCAGAGCCACTGGGGCTGGGTAGCAGATCAGTTTGTCTCTACCTCGGAAGCAAAAACGCCAAAAA  
 AGAATACATGGGTCTGGCAATCAAAAATGATAACCTGGTATACGTTTACAATTTGGGGATGAAAAGATGTG  
 GAAATTCCTGGATTCCAAGCCTGTGAGCTCCTGGCCGCTTACTTTAGTATTGTAAGATTGAAAGGG  
 TAGGGAACACGGAAAGGTGTTCTTGACAGTCCCAGTCTCAGTAGCACAGCAGAAGAAAAGTTTATTA  
 GAAGGGGAGTTTGCAGGAGATGACTCCTTGCTGGATCTGACCCCTGAGGACACTGTGTTTTACGTTGGT  
 GGGGTGCCTGCGAACTTCAAGCTCCCTGCCAGCTTAAACCTGCCAGTACTCAGGCTGCCTAGAGCTGG  
 CCACTGGAATAATGATGTGATCAGCTGTACAACCTTCAAGCACATCTATAATATGGATCCATCAAAAGT  
 AGTGCCCTGTGCCAGGGATAAACTGGCTTCACTCAGAGTAGGGCTGCCAGCTACTTCTCGATGGCTCC  
 AGTTATGCAAGTGGTGAAGGACATCACGAGGAGAGGGAAGTTTGGTCAAGTACTGCTTTGACATAGAAA  
 TCCGAACACCAGCTGACAATGGCCTTGTCTCCTGATGGTCAATGGCAGTATGTTTTTCAGCCTCGAAAT  
 GCGCAATGGCTACCTACATGTGTTCTATGACTTTGGATTGAGCAATGGCCCCGTGCATCTTGAAGACAG  
 TTGAAAAAAGCCAGATTAAATGATGCGAAATATCATGAGATCTCAATCATTTATCACAACGACAAAAAAA  
 TGATTTTGGTGGTGGACAGACGGCACGTTAAGAGCACAGACAATGAGAAGAAAAAGATTCCTTTCCAGGA  
 CATCTACATCGGAGTGCGCCCAAGAAGTCTTACAGTCCAGGACCTAAGAGCACACCTTCCCCTAGAT  
 ATCAACTTTAGGGGGTGCATGAAGGGTCCAGTTCAAAAGAAAGATTTCAATTTACTGGAGCAGACAG  
 AAACCCTAGGAGTTGGTTATGGATGCCAGAGGACTCTCTGATATCTCGCAGAGCATATTTCAATGGGCA  
 AAGTTTTATTGCTCAATTCAGAAAAATATCTTTCTTTGATGGCTTTGAAGGAGGCTTCAATTTCCGAACA  
 TTACAGCCAAATGGGTTACTATTCTACTACACATCAGGGTCCGACGTGTTTTCCATTTCACTGGACAACG  
 GCACTGTTGTCATGGACGTAAAGGGCATCAAGGTCAATGTCACAGACAAGCAGTACCACGATGGGCTGCC  
 CCATTCGTGGTCACTCCATCTCAGACACAAGATATGAACTGGTAGTACAAAAAGCCGACTTCGAGGG  
 AAGAATCCAACAAAAGGGGAAGGCAGAGCAGACTCAAACAAGTGAAGAAGTTCTACTTTGGTGGCTCAC  
 CCATCAGTCTCAGTATGCTAATTTCACTGGATGTATAAGCAATGCCTACTTTACCAGGTTGGATAGAGA  
 TGTGGAAGTGAAGACTCCAGCGCTATTCTGAAAAGTCCACACTTCACTCTATGAGTGTCCGATTGAG  
 TCGTCACTCTGTTTCTCCTTCAAAAAAAGGAAAGAATTCCTCAAAGCCTAAAAACAAACAAACAGGGAG  
 AGAAGAGTAAGGATGCGCCTTATGGGATCCTATTGGCCTGAAGTTTCTGGAACGAAAAGCTCCAAGAGA  
 TTCCCACTGCCACCTCTCCAGCAGCCCCAGGGCAATAGAACATGCCTATCAATATGGCGGCACGGCCAAC  
 AGTCGCCAGGAGTTTGAACACGAACAAGGAGATTTTGGTAAAAATCCCAGTTTGGCATTCTGCTGAAGA  
 CCCGTTCTCAGATGGGATGATTTTCTATGCTCAGACCAAGAAGAGAATGATTTTCATGACCCTGTTCTT  
 GGCCCATGGTTCGTTGGTCTTTATGTTTAAATGTTGGCCATAAGAACTGAAGATTAGAAGCCAGGAGAAA  
 TACAATGATGGATTGTGGCATGATGTGATTTTATCGGGAAAAGAGCAGTGGTTCGACTGGTCATTGATG  
 GTCTACGAGTCTAGAAGAAAGGCTTCCCCTAGTGGCGTGCCTGGAAAATCAAGGGTCCCATTTATCT  
 GGGAGGAGTGGCTCCCGAAGAGCCGTGAAAAATGTCCAGATTACCTCCGCTACAGCTTCAAGTGGCTGC  
 CTTGGCAATCTCCAGCTCAATGGTGCCTCCATCACCTCCGCTTCTCAAACGTTTAGCGTGACCCCTTGT  
 TTGAAGGGCCAATGGAACAGGAACTTATTTTTCCACAGAAGGCGGCTATGTGGTTCTAGATGAGCTTT  
 CAATATTGGGTTAAAAATTTGAAATTTGCCTTTGAAGTCCGCCCCGGAGCAGTTCTGGAACCTTGTCCAT  
 GGCCACAGCGTCAACGGGAATACCTGAACGTGCACATGAGAAACGGACAGGTATAGTGAAGGTCAACA

ACGGTGTGACAGACTTTTCTACCTCAGTAACTCCCAAGCAGAATCTCTGTGATGGCAGATGGCACAGAAT  
TACAGTTATTAGAGATTCAAACGTGTTTTCAGTTGGATGTAGACTCAGAAGTGAACCATGTAGTTGGGCCG  
TTGAATCCAAAGCCAGTTGATCAGGGAGCCTGTGTTTGTGGAGGTGTCCAGAGTCTTTACTGACAC  
CACGTTTGGCTCCAGCAAACCTTACCAGGCTGCATCCGCCACTTTGTAATTGACAGCCGCCCTGTGAG  
CTTCAGTAAAGCTGCCCTGGTCACTGGTGTGAGCATCAACTCCTGTCCCACAGCC

ACGCGTACGCGGCCGCTCGAGCAGAACTCATCTCAGAAGAGGATCTGGCAGCAAATGATATCCTGGATT  
ACAAGGATGACGACGATAAGGTTTAA

**Protein Sequence:**

>MR222385 representing NM\_010681  
Red=Cloning site Green=Tags(s)

MGWSTAWCSVLALWLLWCAVCSNAASGDGNAPFPDIEGSAVVGRQDPSETSDSGVTLGRLLPAAERCDAG  
FFRTLSEGCAPDCNNGSHECLDGSFCLHCQRNTTGEHCEKCLDGYIGDSIRGTPRFCQPCPCPLPHLA  
NFAESCYRKNAGVRCICKENYVGPNCERCAPGYGNPLLI GSTCKKDCSGNSDPNLIFEDCDEITGQCR  
NCLRNTTGFKCCERCAPGYGDARTAKNCAVNCGGGPCDSVTGECELEEFVPTGCDKCVWDLTDDLRLA  
ALSIEESKSGLLSVSSGAAHRVHVTDMNSTIHLRLRRLSERENQYTLRKIQINSENTLRSLLPDVEGLH  
EKGSQASRKGMLEKESMDTIDQATHLVEQAHNMRDKIQEINSKMLYGENQELGPEEIAEKLVLAKQML  
EEIRSRQPFLTHRELVDDEADEAQELL SQAENWQRLHNDTRSLFPVVLEQLDDYNAKLSDLQESINQALD  
HVRDAEDMNRAITFKQRDHEKQHERVKEQMEVVGASLSMSADSLTIPQLTLEELDEIKNASGIYAEIDG  
AKNELQKLSNLNLSHDLVQEATDHAYNLQEQEDEL SRNLHSSDMNGLVQKALDASNVIENIANYVSEA  
NETAELALNITDRIYDAVSGIDTQIIYHKDESDNLLNQARELQAKADSSNDEAVADTSRRVGGALWRKGA  
LRDRLNDAVKQLQAAERGDHQRLLGQSKLFIIEANKTTAAVQVTTTPMANNLSNWSQNLQTFDSSAYNTA  
VDSARDAVRNLTEVVPQLLDQLRTVEQKRPASNISASIQRIRELI AQTRSVASKIQVSMFMDGQSAVEVH  
PKVSVDDLKAFTSISLYMKPPPKAEPGTAWVADQFVLYLGSKNAKKEYMGLAIKNDNLVYVYNLGMKDV  
EILLDSKPVSSWPAYFSIVKIERVKGKGVFLVTPSLSSSTAEKFIKKGEFAGDDSLDLTPEDTVFYVG  
GVPANFKLPASLNLPSYSGCLELALNNDVLSL YNFKHIYNMPSKSVPCARDKLAFTQSRAASYFDGS  
SYAVVRDITRRGKFGQVTRFDIEIRTPADNGLVLLMVNGSMFFSLEMRNGYLHVFYDFGFSNGPVHLEDT  
LKKAQINDAKYHEISIIYHNDKKMILVDRRHVKSTDNEKKKIPFTDIYIGGAPQEVLSRTRLRAHLPLD  
INFRGCMKGFQFQKDFNLLQETETLGVYGCPEDSLISRRAYFNGQSF IASIQKISFFDGFEGGFNFRT  
LQPNGLLFYYTSGSDVFSISLDNGTVVMDVKGIKVMSTDKQYHDGLPHFVVTSISDTRYELVVDKSRLRG  
KNPTKGAEQQTTEKFFYGGSPISPYANFTGCISNAYFTRLDRDVEVEDFQRYSEKVHSLYECPIE  
SSPLFLLHKKGNSSPKTKNQGEKSKDAPSWDPIGLKFLEQKAPRDSHCHLSSSPRAIEHAYQYGGTAN  
SRQEFHEQGDGFEKSQFAIRLKRSSHGMIFVYSDQEENDFMTLFLAHGRLVFMFNVGHKLLKIRSQEK  
YNDGLWHDVIFIREKSSGRLVIDGLRVLEERLPPSGAAWKIKGPIYLGAVPGRAYKNVQITSVYSFSGC  
LGNLQLNGASITSASQTFSVTPCFEGPMETGTYFSTEGGYVVLDESFNIGLKFEIAFEVVRPRSSSGLVH  
GHSVNGEYLVNVMRNGQVIVKVNNGVDRDFSTSVTPKQNLCDGRWHRITVIRDSNVVQLDQVDSEVNHVVG  
LNPKPVDHREPVFVGGVPESLLTPRLAPSKPFTGCIHFVIDSRPVFSKAALVSGAVSINSCPTA

TRTRPLEQKLISEEDLAANDILDYKDDDDKV

**Chromatograms:**

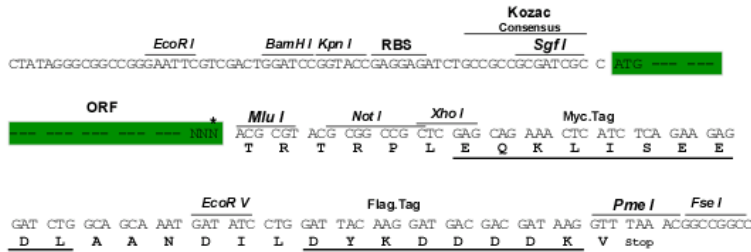
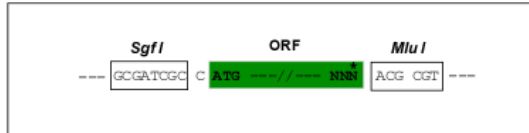
[https://cdn.origene.com/chromatograms/mm9007\\_d02.zip](https://cdn.origene.com/chromatograms/mm9007_d02.zip)

**Restriction Sites:**

Sgfl-MluI

Cloning Scheme:

Cloning sites used for ORF Shutting:



\* The last codon before the Stop codon of the ORF

ACCN: NM\_010681

ORF Size: 5448 bp

OTI Disclaimer: The molecular sequence of this clone aligns with the gene accession number as a point of reference only. However, individual transcript sequences of the same gene can differ through naturally occurring variations (e.g. polymorphisms), each with its own valid existence. This clone is substantially in agreement with the reference, but a complete review of all prevailing variants is recommended prior to use. [More info](#)

OTI Annotation: This clone was engineered to express the complete ORF with an expression tag. Expression varies depending on the nature of the gene.

Components: The ORF clone is ion-exchange column purified and shipped in a 2D barcoded Matrix tube containing 10ug of transfection-ready, dried plasmid DNA (reconstitute with 100 ul of water).

**Reconstitution Method:**

1. Centrifuge at 5,000xg for 5min.
2. Carefully open the tube and add 100ul of sterile water to dissolve the DNA.
3. Close the tube and incubate for 10 minutes at room temperature.
4. Briefly vortex the tube and then do a quick spin (less than 5000xg) to concentrate the liquid at the bottom.
5. Store the suspended plasmid at -20°C. The DNA is stable for at least one year from date of shipping when stored at -20°C.

**RefSeq:** [NM\\_010681.4](#), [NP\\_034811.2](#)

**RefSeq Size:** 6046 bp

**RefSeq ORF:** 5451 bp

**Locus ID:** 16775

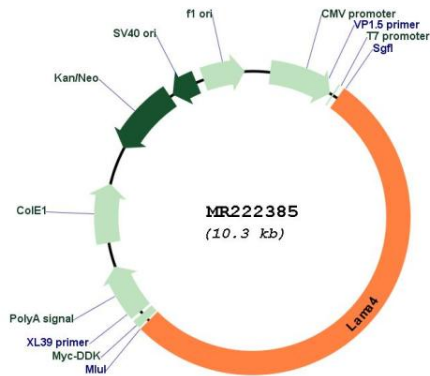
**UniProt ID:** [P97927](#)

**Cytogenetics:** 10 20.02 cM

**MW:** 202.3 kDa

**Gene Summary:** Binding to cells via a high affinity receptor, laminin is thought to mediate the attachment, migration and organization of cells into tissues during embryonic development by interacting with other extracellular matrix components.[UniProtKB/Swiss-Prot Function]

**Product images:**



Circular map for MR222385