

## Product datasheet for **MR222360**

### **Dnm2 (NM\_001039520) Mouse Tagged ORF Clone**

#### **Product data:**

Product Type:	Expression Plasmids
Product Name:	Dnm2 (NM_001039520) Mouse Tagged ORF Clone
Tag:	Myc-DDK
Symbol:	Dnm2
Synonyms:	b2b2159Clo; Dyn2; Udnm
Mammalian Cell Selection:	Neomycin
Vector:	pCMV6-Entry (PS100001)
E. coli Selection:	Kanamycin (25 ug/mL)



[View online »](#)

ORF Nucleotide  
Sequence:

>MR222360 representing NM\_001039520  
 Red=Cloning site Blue=ORF Green=Tags(s)

TTTTGTAATACGACTCACTATAGGGCGGCCGGGAATTCGTCGACTGGATCCGGTACCGAGGAGATCTGCC  
 GCCGCGATCGCC

ATGGGCAACCGCGGGATGGAAGAGCTCATCCCGCTGGTTAAACAAGCTGCAGGACGCCTTCAGCTCCATCG  
 GTCAGAGCTGCCACCTGGACCTGCCGAGATCGCCGTGGTGGGCGGCCAGAGCGCCGGCAAAGTTCGGT  
 GCTCGAGAACTTCGTGGGCCGGGACTTCCTTCCACGAGGATCAGGAATTGTCACCCGGAGGCCTCTCATT  
 CTGCAGCTCATCTTTCCAAAACAGAATATGCGGAATTTTTCAGCTGCAAGTCCAAAAAATTTACAGACT  
 TTGATGAAGTCCGGCAGGAGATCGAAGCAGAGACTGACCGGGTACAGGCACCAACAAAGGCATCTCCCC  
 TGTGCCATCAACCTTCGGTCTACTCACCACAGTGTGAAGTTCAGCCCTCATCGACTCCAGGCATC  
 ACTAAGGTGCCGGTGGGGACCAGCCGACAGATCGAGTACCAGATCAAGGACATGATCCTGCAGTTCA  
 TCAGCCGGAGAGCAGCCTCATTCTTCCGTACACCTGCCAACATGGACTTGGCCAACTCAGACGCCCT  
 CAAGCTGGCCAAGGAGGTGGACCCCAAGGCCTACGGACCATCGTGTGCATCACAAGCTAGACTTGATG  
 GATGAAGGCACAGACGCCAGGGATGTCTGGAAAACAAGCTACTGCCCTTGAGAAGAGGCTATATCGGGC  
 TGGTTAACCGAAGCCAGAAAGACATCGAGGGCAAAAAGGACATCCGGGCTGCTCTGGCAGCCGAGAGGAA  
 ATTCTTCTCTCCACCCAGCCTACCGGCACATGGCTGACCGCATGGGCACCCACACTTGCAAAAACC  
 CTGAACCAGCAACTGACCAACCACATCCGAGAGTCACTGCCGACCTTCGAGCAAGCTGCAGAGCCAAC  
 TGCTGTCCCTGGAGAAGGAAGTGAAGAGTACAAGAATTTCCGGCCTGATGACCCACGCGCAAGACCAA  
 AGCCCTGCTGCAGATGGTTCAGCAGTTTGGAGTGGACTTGGAGAAGCAATTGAAGGCTCGGGAGATCAA  
 GTAGACACACTAGAGTTGCTGGTGGAGCCGCATCAATCGTATCTTTCATGAGCGCTTTCCCTTTGAAC  
 TGGTAAAGATGGAGTTTATGAGAAAGATCTACGAAGAGAGATCAGCTATGCTATTAAGAACATCCACGG  
 AGTCAGGACGGGGCTCTTCAACCCGACATGGCCTTTGAAGCCATCGTGAAAAAACAGCTTGTAAAACTC  
 AAAGAGCCGAGTTTGAAGTGTGTGACCTGGTGGTGTGCGAGCTAGCCACGGTCATTA AAAAGTGTGCTG  
 AGAAGCTGAGTTCCTACCCCGGCTGCGAGAGGAGACCGAGCAATTGTCACCACCTACATCAGGGAGCG  
 AGAAGGGAGAACCAAGGACCAGATTCTTCTTCTGATTGACATTGAGCAGTCGTACATCAACACAAACCAT  
 GAAGACTTCATTGGATTTGCCAATGCCAGCAGAGGAGCAGCAGCTGAACAAGAAGAGGGCCATACCCA  
 ATCAGGGGAGATCTTGGTATCCGACGGGCTGGTTGACCATCAACAATATCAGCTTGATGAAGGGTGG  
 CTCCAAGGAGTACTGGTTCGTGCTGACAGCTGAGTCATTGTCTTGGTACAAGGATGAGGAGGAGAAAGAA  
 AAGAAGTACATGCTGCCACTGGACAACCTCAAGATCCGGGACGTGAAAAGGGCTTCATGTCCAACAAGC  
 ACGTGTTCATCTTCAACACAGAGCAGAGGAATGTCTACAAGGACCTTCGACAGATTGAACTGGCTTG  
 TGACTCCAGGAAGATGTGGACAGCTGGAAGGCTTCGTTCTGCGCGCTGGGGTCTACCCAGAGAAGGAC  
 CAGGCAGAGAATGAGGATGGAGCACAAGAGAACACCTTCTCCATGGACCCGACGCTGGAGCGACAGGTGG  
 AGACCATCCGTAACCTGGTGGACTCCTACGTGGCCATCATCAACAAGTCCATCCGTGACCTTATGCCAAA  
 GACCATCATGCACCTCATGATCAACAACACAAAGGCCTTCATCCACCATGAGCTGCTGGCTTACCTGTAT  
 TCATCAGCAGACCAGAGCAGCCTCATGGAAGAGTCAGCCGAGCAGGCTCAGCGCGGGGACGACATGCTGC  
 GCATGTACCACGCACTGAAGGAGGCCCTCAACATTATTGGGACATCAGCACCAGCACCCTGCCACACC  
 CGTGCCCCACCGGTCGATGACACGTGGCTCCAAAACACCAGCGGCCACAGCCCCACTCCACAGCGCCGA  
 CCTGTGTCCAGTGTGACCCACCAGGCCGGCCACCTGCAGTGCAGGGTCTTACACCGGGGCTCCCTGA  
 TTCTATGCCTGTGGGGCCACATCCTCTTCTCAGCACCTCCCATCCCATCCCGGCTGGACCACAGAG  
 TGTGTTTGCCAACAACGACCCCTTCTCTGCGCCACCTCAGATACCATCTCGGCCAGCAGGATTCCCCCT  
 GGTATCCCTCCAGGAGTCCCGAAGAGCGCCGCTGCGCCAGCCGGCCACCATTATCCGCCAGCCG  
 AGCCGTCCCTGCTCGAC

ACGCGTACGCGGCCGCTCGAGCAGAACTCATCTCAGAAGAGGATCTGGCAGCAATGATATCCTGGATT  
 ACAAGGATGACGACGATAAGGTTTAA

Protein Sequence: >MR222360 representing NM\_001039520  
 Red=Cloning site Green=Tags(s)

MGNRGMEELIPLVNLQDAFSSIGQSCHLDLPQIAVVGGSAGKSSVLENFVGRDFLPRGSGIVTRRPLI  
 LQLIFSKTEYAEFLHCKSKKFTDFDEVQRQIEAETDRVTGTNKGISPVINL RVYSPHVLNLTIDLPGI  
 TKVPVGDQPPDIEYQIKDMILQFISRESSLILAVTPANMDLANS DALKLAKEVDPQGLRTIGVITKLDLM  
 DEGTDARDVLENKLLPLRRGYIGVVNRSQKDIEGKKDIRAALAAERKFFLSHPAYRHMADRMGTPHLQKT  
 LNQQLTNHIRESLPTLRSKLQSLLSLEKEVEEYKNFRPDDPTRKTKALLQMVQQFGVDFEKRIEGSGDQ  
 VDTLELSGGARINRIFHERFPFELVKMEFDEKDLRREISYAIKNIHGVRTGLFTPDMAFEAIVKKQLVKL  
 KEPSLKCVDLVVELATVIKKCAEKLSSYPRLREETERIVTTYIREREGRTKDQILLIDIEQSYINTNH  
 EDFIGFANAQQRSTQLNKKRAIPNQGEILVIRRGWLTINNI SLMKGSKEYWFLTAESLSWKDEEEKE  
 KKYMLPLDNLKIRDVEKGFMSNKHVFAIFNTEQRNVYKDLRQIELACDSQEDVDSWKASFLRAGVPEKD  
 QAENEDGAQENTFSMDPQLERQVETIRNLVDSYVAIINKSIRDLMPKTIMHLMINNTKAFIHHELLAYLY  
 SSADQSSLMEESAQAQRDDMLRMYHALKEALNIIGDISTSTVSTPVPVDDTWLQNTSGHSPTPQR  
 PVSSVHPPGRPPAVRGPTPGPPLIPMPVGATSSFAPPISRPGPQSVFANNDPFSAPPQIPSRPARIPP  
 GIPPGVPRRAPAAPSRTIIRPAEPLLD

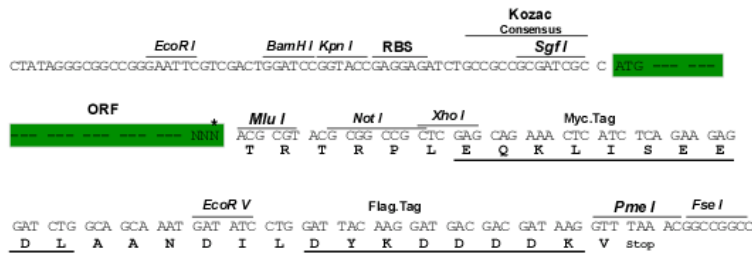
TRTRPLEQKLISEEDLAANDILDYKDDDDKV

Chromatograms: [https://cdn.origene.com/chromatograms/ja1409\\_a10.zip](https://cdn.origene.com/chromatograms/ja1409_a10.zip)

Restriction Sites: SgfI-MluI

Cloning Scheme:

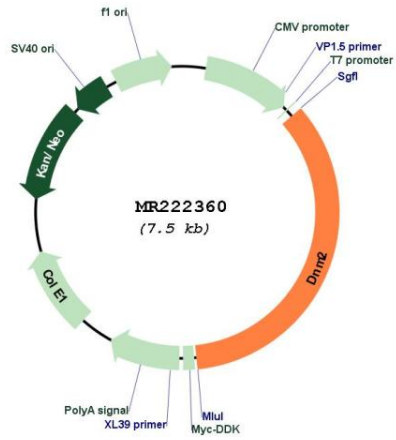
Cloning sites used for ORF Shuttling:



\* The last codon before the Stop codon of the ORF

<b>ACCN:</b>	NM_001039520
<b>ORF Size:</b>	2607 bp
<b>OTI Disclaimer:</b>	The molecular sequence of this clone aligns with the gene accession number as a point of reference only. However, individual transcript sequences of the same gene can differ through naturally occurring variations (e.g. polymorphisms), each with its own valid existence. This clone is substantially in agreement with the reference, but a complete review of all prevailing variants is recommended prior to use. <a href="#">More info</a>
<b>OTI Annotation:</b>	This clone was engineered to express the complete ORF with an expression tag. Expression varies depending on the nature of the gene.
<b>Components:</b>	The ORF clone is ion-exchange column purified and shipped in a 2D barcoded Matrix tube containing 10ug of transfection-ready, dried plasmid DNA (reconstitute with 100 ul of water).
<b>Reconstitution Method:</b>	<ol style="list-style-type: none"><li>1. Centrifuge at 5,000xg for 5min.</li><li>2. Carefully open the tube and add 100ul of sterile water to dissolve the DNA.</li><li>3. Close the tube and incubate for 10 minutes at room temperature.</li><li>4. Briefly vortex the tube and then do a quick spin (less than 5000xg) to concentrate the liquid at the bottom.</li><li>5. Store the suspended plasmid at -20°C. The DNA is stable for at least one year from date of shipping when stored at -20°C.</li></ol>
<b>RefSeq:</b>	<a href="#">NM_001039520.2</a> , <a href="#">NP_001034609.1</a>
<b>RefSeq Size:</b>	3483 bp
<b>RefSeq ORF:</b>	2610 bp
<b>Locus ID:</b>	13430
<b>Cytogenetics:</b>	9 7.79 cM
<b>MW:</b>	98.4 kDa
<b>Gene Summary:</b>	Microtubule-associated force-producing protein involved in producing microtubule bundles and able to bind and hydrolyze GTP. Plays a role in the regulation of neuron morphology, axon growth and formation of neuronal growth cones (By similarity). Plays an important role in vesicular trafficking processes, in particular endocytosis. Involved in cytokinesis (PubMed:18923138). Regulates maturation of apoptotic cell corpse-containing phagosomes by recruiting PIK3C3 to the phagosome membrane (PubMed:18425118).[UniProtKB/Swiss-Prot Function]

Product images:



Circular map for MR222360