

Product datasheet for MR222280L4

Ccl19 (NM_011888) Mouse Tagged Lenti ORF Clone

Product data:

Product Type:	Expression Plasmids
Product Name:	Ccl19 (NM_011888) Mouse Tagged Lenti ORF Clone
Tag:	mGFP
Symbol:	Ccl19
Synonyms:	CKb11; ELC; exodus-3; MIP3B; Scya19
Mammalian Cell Selection:	Puromycin
Vector:	pLenti-C-mGFP-P2A-Puro (PS100093)
E. coli Selection:	Chloramphenicol (34 ug/mL)
ORF Nucleotide Sequence:	The ORF insert of this clone is exactly the same as(MR222280).
Restriction Sites:	SgfI-MluI
Cloning Scheme:	

Cloning sites used for ORF Shuttling:



* The last codon before the Stop codon of the ORF.

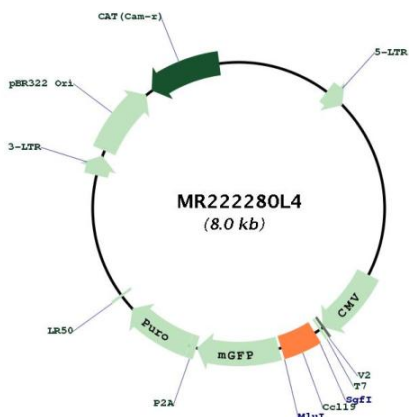
ACCN:	NM_011888
ORF Size:	324 bp



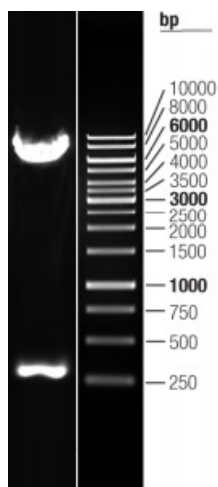
[View online »](#)

OTI Disclaimer:	<p>Due to the inherent nature of this plasmid, standard methods to replicate additional amounts of DNA in E. coli are highly likely to result in mutations and/or rearrangements. Therefore, OriGene does not guarantee the capability to replicate this plasmid DNA. Additional amounts of DNA can be purchased from OriGene with batch-specific, full-sequence verification at a reduced cost. Please contact our customer care team at custsupport@origene.com or by calling 301.340.3188 option 3 for pricing and delivery.</p> <p>The molecular sequence of this clone aligns with the gene accession number as a point of reference only. However, individual transcript sequences of the same gene can differ through naturally occurring variations (e.g. polymorphisms), each with its own valid existence. This clone is substantially in agreement with the reference, but a complete review of all prevailing variants is recommended prior to use. More info</p>
OTI Annotation:	<p>This clone was engineered to express the complete ORF with an expression tag. Expression varies depending on the nature of the gene.</p>
Components:	<p>The ORF clone is ion-exchange column purified and shipped in a 2D barcoded Matrix tube containing 10ug of transfection-ready, dried plasmid DNA (reconstitute with 100 ul of water).</p>
Reconstitution Method:	<ol style="list-style-type: none">1. Centrifuge at 5,000xg for 5min.2. Carefully open the tube and add 100ul of sterile water to dissolve the DNA.3. Close the tube and incubate for 10 minutes at room temperature.4. Briefly vortex the tube and then do a quick spin (less than 5000xg) to concentrate the liquid at the bottom.5. Store the suspended plasmid at -20°C. The DNA is stable for at least one year from date of shipping when stored at -20°C.
RefSeq:	NM_011888.2
RefSeq Size:	720 bp
RefSeq ORF:	327 bp
Locus ID:	24047
UniProt ID:	O70460
Cytogenetics:	4 A5
Gene Summary:	<p>Strongly chemotactic for naive (L-selectin^{hi}) CD4 T-cells and for CD8 T-cells and weakly attractive for resting B-cells and memory (L-selectin^{lo}) CD4 T-cells. May play a role in promoting encounters between recirculating T-cells and dendritic cells and in the migration of activated B-cells into the T-zone of secondary lymphoid tissues. Binds to chemokine receptor CCR7. Binds to atypical chemokine receptor ACKR4 and mediates the recruitment of beta-arrestin (ARRB1/2) to ACKR4.[UniProtKB/Swiss-Prot Function]</p>

Product images:



Circular map for MR222280L4



Double digestion of MR222280L4 using SgfI and MluI