

Product datasheet for **MR222265**

Vav2 (NM_009500) Mouse Tagged ORF Clone

Product data:

Product Type:	Expression Plasmids
Product Name:	Vav2 (NM_009500) Mouse Tagged ORF Clone
Tag:	Myc-DDK
Symbol:	Vav2
Synonyms:	2810040F13Rik; AI847175; Vav-2
Mammalian Cell Selection:	Neomycin
Vector:	pCMV6-Entry (PS100001)
E. coli Selection:	Kanamycin (25 ug/mL)



[View online »](#)

ORF Nucleotide Sequence:

>MR222265 representing NM_009500
 Red=Cloning site Blue=ORF Green=Tags(s)

TTTTGTAATACGACTCACTATAGGGCGGCCGGAATTCGTCGACTGGATCCGGTACCGAGGAGATCTGCC
 GCC**CGCATCGCC**

ATGGAGCAGTGGCGGCAATGCGGCCGCTGGCTCATCGACTGCAAGTCTGCCGCCAACACCACCGCTCG
 TGTGGCCCTCGGCGGTGGTCTTCGACCTGGCGCAGGCGCTGCGCGACGGGCTCTTCTGTGCCAGCTGCT
 GCACAACCTCTCCCCGGTTCCATCGACCTTAAGGACATCAACTTCCGGCCGAGATGTCCAGTTCTTG
 TGTCTGAAGAATATTCGCACCTTCTCAAAGTCTGCCATGACAAATTTGGACTAAGAAACAGTGAGCTGT
 TTGACCTTTTCGACCTCTTTGATGTCCGAGACTTCGGGAAGGTCACTCTGCAGTGTCCCGTCTGTCCCT
 GCACAGCATCGCACAGAGCAAAGGGATCAGGCCATTTCCATCAGAGGAGACAGCTGAAAATGATGACGAC
 GTCTACCGGAGCCTGGAAGAGCTGGCTGACGAGCATGACCTGGGTGAGGACATCTACGACTGTGTCCCGT
 GTGAAGATGAAGGAGATGACATTTATGAGGACATCATCAAGGTGGAGGTGCAGCAGCCCATGAAAATGGG
 CATGACTGAGGACGACAAGAGAAGCTGCTGCTTGTAGAGATTACAGGAGCCGAGGCCAAGTACTACCGC
 ACCCTGGAGGACATTGAGAAGAAGTACATGGGTCCCTTGGCGTGGTGTGAGCCCGGCGGATATGGCTG
 CTGTCTTCATCAACCTGGAGGACCTCATCAAGGTGCATCAGACTTTCTGCGAGCCATCGATGTGTCCAT
 GATGGCTGGTGGCAGTACCCTGGCTAAGGTCTTTCTGGAGTTAAGGAAAGGCTCCTGATCTATGGAGAG
 TACTGTAGCCACATGGAACACGCTCAGAGTACACTGAACCAGCTCCTCGCCAGCCGAGAGGACTTCAGGC
 AGAAAGTGGAGGAGTGCACACTCAGGGTTCAGGATGGCAAGTTCAGCTGCAAGACCTGTGGTGGTGCC
 CATGCAACGGGTGCTGAAGTACCACCTGCTGCTCAAGGAGCTCCTGAGCCATTCTGCAGACCACCAGAA
 AGACAACAGCTCAAAGAAGCCCTGGAAGCCATGCAGGACTTGGCCATGTACATCAATGAAGTGAAGCGGG
 AATTTGGGAGGCCAAAGATTGACGGGAGCTTAAAGTCCGGTCCATAGTCAACCACACCAAGCAAGACAGG
 TACCTGTTCTATTTGACAAGGTGGTCACTCGTGTGCAAGAGGAAGGGCTACAGCTATGAGCTGAAGGAGG
 TCATTGAGCTGCTCTCCACAAGATGACCGATGACCCGATGCACAACAAGGACATCAAGAAGTGGTCCCTA
 TGGCTTCTACCTGATTACCTCCAAGGAAAGCAAGGCTTTTCAGTTCTTCTGCAAGACGGAAGACATGAAG
 CGGAAGTGGATGGAGCAGTTTCGAGATGGCCATGTCAAACATCAAGCCAGATAAGGCCAATGCCAACCATC
 ATAGCTTCCAGATGTACACATTCGACAAGACTACCAACTGCAAAGCCTGCAAGATGTTTTCTCAGGGGTAC
 CTTCTACCAGGGATACCTGTGTACCAGATGTGGCGTGGGGCACACAAGGAATGCCTGGAGGTGATCCCC
 CCCTGCAAGATGAGTTCACCTGCAGATGTGGATGCTCCTGGAGCAGGACCAGGTCCCAAGATGGTTGCTG
 TGCAGAATTACCATGGTAACCCAGCCCCTCCTGGGAAGCCTGTGTTGACCTTCCAGACAGGAGACGTGAT
 AGAACTGCTCCGGGGTGACCCCGATTCTCCTTGGTGGGAAGGGCGGCTGGTTCAAACCAGGAAGTCAAGG
 TATTTTCCAGCTCATCTGTGAAGCCCTGCCAGTGGATGGAAGGCCGCCTACTGGCCGCCACCATCCC
 GGGAGATCGATTACACTGCCTACCCGTGGTTTGTGGCAACATGGAACGGCAGCAGACGGACAATCTGCT
 CAAGTCTCATGCCAGTGGGACCTACCTCATCAGAGAGCGTCCAGCAGAGGCAGAACGCTTCGCCATCAGC
 ATCAAGTTCATGATGAGGTGAAACATATCAAGGTGGTGGAGAAAGATAGCTGGATCCACATCACGGGAAG
 CTAAGAAGTTTGAGAGCCTCCTGGAGCTGGTGGAGTACTACCAGTGTCACTCACTCAAGGAAAGCTTCAA
 GCAGTTGGACACTACACTCAAGTTCCTTACAAGTCTCGGGAGCGAACCACCAGCAGGGCCCTCAAGCCGG
 TCTCCAGCTTCTGCGCTTCTACAACTTTTCTTTCTCAGTCCCTCAGGGCCTCAGCTTTGCCCCCGAGG
 CCCCTTCTGCTCCCTTCTGGTCAAGTGTTCACACCGCGGTCATCGGCACAGCCGTGGCCAGGTACAACCT
 TGCTGCTCGAGACATGCGGGAGCTGTCACTGCGAGAAGGTGATGTGGTGAAGATCTACAGCCGAATTGGT
 GGGGACCAGGGCTGGTGGAAAGGAGAGACAAATGGGCGGATCGGTTGGTTTCTTCGACGTACGTGGAAG
 AGGAAGGCGTCCAG

ACGCGTACGCGGCCGCTCGAGCAGAAACTCATCTCAGAAGAGGATCTGGCAGCAAATGATATCCTGGATT
 ACAAGGATGACGACGATAAGGTTTAA

Protein Sequence: >MR222265 representing NM_009500
 Red=Cloning site Green=Tags(s)

MEQWRQCGRWLIDCKVLPPNHRVWVPSAVVFDLAQALRDGVLLCQLLHNLSPGSIDLKIDNFRPQMSQFL
 CLKNIRTFLLKVDKFKGLRNSLFDLFDVDFGKVISAVSRLSLHSIAQSKGIRFPFSEETAENDD
 VYRSLEELADEHDLGEDIYDCVPCDEGDDIYEDIKVEVQPPMKMGMTEDDKRSCCLLEIQETEAKYYR
 TLEDIEKNYMGPLRLVLSPADMAAVFINLEDLIKVHHSFLRAIDVSMAGGSTLAKVFLFKERLLIYGE
 YCSHMEHAQSTLNQLLASREDFRQKVEECTLRVQDGKFKLQDLLVMPQRLVKYHLLKELLSHSADRPE
 RQQLKEALEAMQDLAMYINEVKRDKETLKKISEFQCSIENLQVKLEEFGRPKIDGELKVRISIVNHTKQDR
 YLFLFDKVVIVCKRKGYSYELKEVIELLFHKMTDDPMHNKDIKKWSYGFYLIHLQKGQGFQFFCKTEDMK
 RKWMEQFEMAMSNIKPKANANHHSFQMYTFDKTTNCKACKMFLRGTFYQGYLCTRCGVGAHKECLEVIP
 PCKMSSPADVDAPGAGPGPKMVAVQNYHGPNAPPKPVLTFTQGDVIELLRGDPDPPWEGRLVQTRKSG
 YFPSSSVKPCVPDGRPPTGRPPSREIDYATYPWFAGNMRQQTNDLLKSHASGYLIRERPAEAERFAIS
 IKFNDEVKHIKVVVEKDSWIHITEAKKFESLLELVEYYQCHSLKESFKQLDITLTKFPYKSRERTTSRASSR
 SPASCASYNFSFLSPQGLSFAPQAPSAPFWSVFTPRVIGTAVARYNFAARDMRELSLREGDVVKIYSRIG
 GDQGWKGETNGRIGWFPSTYVEEEGVQ

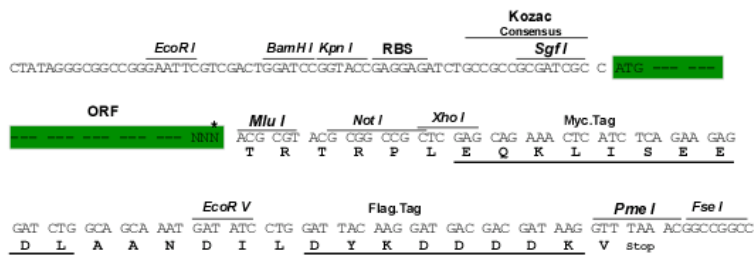
TRTRPLEQKLISEEDLAANDILDYKDDDDKV

Chromatograms: https://cdn.origene.com/chromatograms/mm9095_b06.zip

Restriction Sites: SgfI-MluI

Cloning Scheme:

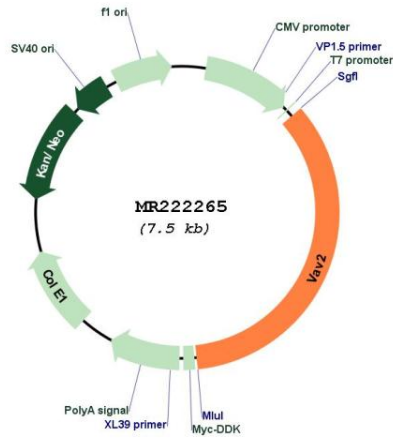
Cloning sites used for ORF Shuttling:



* The last codon before the Stop codon of the ORF

ACCN:	NM_009500
ORF Size:	2604 bp
OTI Disclaimer:	The molecular sequence of this clone aligns with the gene accession number as a point of reference only. However, individual transcript sequences of the same gene can differ through naturally occurring variations (e.g. polymorphisms), each with its own valid existence. This clone is substantially in agreement with the reference, but a complete review of all prevailing variants is recommended prior to use. More info
OTI Annotation:	This clone was engineered to express the complete ORF with an expression tag. Expression varies depending on the nature of the gene.
Components:	The ORF clone is ion-exchange column purified and shipped in a 2D barcoded Matrix tube containing 10ug of transfection-ready, dried plasmid DNA (reconstitute with 100 ul of water).
Reconstitution Method:	<ol style="list-style-type: none">1. Centrifuge at 5,000xg for 5min.2. Carefully open the tube and add 100ul of sterile water to dissolve the DNA.3. Close the tube and incubate for 10 minutes at room temperature.4. Briefly vortex the tube and then do a quick spin (less than 5000xg) to concentrate the liquid at the bottom.5. Store the suspended plasmid at -20°C. The DNA is stable for at least one year from date of shipping when stored at -20°C.
RefSeq:	NM_009500.2 , NP_033526.1
RefSeq Size:	5812 bp
RefSeq ORF:	2607 bp
Locus ID:	22325
UniProt ID:	Q60992
Cytogenetics:	2 19.36 cM
MW:	99.9 kDa
Gene Summary:	This gene encodes a member of the Vav family of Rho guanine nucleotide exchange factors. Vav family proteins are involved in the development and activation of lymphocytes, and the encoded protein may also be involved in angiogenesis. Disruption of this gene in mice is associated with heart, artery, and kidney defects, as well as tachycardia and hypertension. Alternative splicing results in multiple transcript variants. [provided by RefSeq, Dec 2015]

Product images:



Circular map for MR222265