

Product datasheet for MR22255

Tiam1 (NM_001145886) Mouse Tagged ORF Clone

Product data:

Product Type:	Expression Plasmids
Product Name:	Tiam1 (NM_001145886) Mouse Tagged ORF Clone
Tag:	Myc-DDK
Symbol:	Tiam1
Synonyms:	AI847750; D16lum10; D16lum10e
Vector:	pCMV6-Entry (PS100001)
E. coli Selection:	Kanamycin (25 ug/mL)
Cell Selection:	Neomycin
ORF Nucleotide Sequence:	>MR22255 representing NM_001145886 Red=Cloning site Blue=ORF Green=Tags(s)

TTTTGTAATACGACTCACTATAGGGCGCCGGGAATTCGTCGACTGGATCCGGTACCGAGGAGATCTGCC
GCC**CGATCGCC**

ATGGGAAACGCAGAAAGCCAAAATGTAGACCACGAGTTTTATGGAGAAAAGCATGCCAGCCTGGGGCGGA
AGCACACTTCACGCTCCCTGCGGCTGTACACAAGACCCGGAGGACACGGCATGCTTCCTCCGGGAAGGC
GATCCACAGGAAGCTCTGAAGTGAGCACCAGGTCAGCAGCAGCCAGCATCCCCAGTCCCTGGCTGAA
AATGGCCTGGAGCCCTTCTCCAAGAAGGCGCCCTAGACGACTTCGGGGACCCCATCTGGGTGGACCGAG
TAGATATGGGCTTGAGACCCGTATCTTACACCGATTCTCCGTCCTCCAGCGTAGATGGCAGCATCGT
CCTCACTGCAGCCTCTGTGCAGAGCATGCCAGACTCAGAGGAGAGCCGGCTTTACGGGGATGACGCTACG
TACTTGGCTGAGGGAGGCAGGAGGCAGTGTCCCTATACATCCAATGGGCCACATTCATGGAGACAGCGA
GCTTTAAGAAGAAGCGCTCCAAATCTGCAGACATCTGGCGGGAGGACAGCCTGGAATTCTCACTCTCAGA
TCTGAGCCAAGAACATTTAACAAGCAACGAAGAAATCTTGGTTCCGCGGAAGAGAAGGATTGCGAGGAG
GCTCGGGGATGGAACAGAGGCGAGTCCCGGCAGCTCAGCACCTGTGAGCGAGCAACTCCCTGGGTG
ACTTGTATGCTCAGAAAACCTGGGGTGAAGGCTAATGGAGACCGAGGAACAGATTCTCAAGTACTG
CCGGAATTTGGTGTGGATATTCGCGATCTTGCAAGCATAAGATGCCACCGGCTGCTGCCGAAGAGACT
CCTCCGTACAGTAATTACAACACGCTTCCCTGTAGGAAGTCGCACTGTCTTTCCGAGGGTCCACCAACC
CACAAATTAGCCTTAGCAAGAGCATGCAAGGCAGAAAGAGCAAAAACCACCCAGGATGTTAACACAGGCGA
GGGCAGCGAGTTTGGGACAGTGGGATCGAAGGGGCCACCACCGACAGGACCTTTGTCCAGGAGATCC
AATGCCACCAACTCAAGTACTCGCCCCCACAGGCCAGCCTTTGTGGGAGCGACAGCGGCAGCAGTT
CAACAGGGGATGCTGCGGCCAGGGGTGTACGAGAACTTCAGGCGGAACTGGAGATGAGTACCACCA
CAGTGAGAGCCTGGAGGAGGCTGGCTCTGCGCACAGCGATGAGCAGAGCAGCGGAACCTCAGTTCCCCG
GGCCAGTCGGACATCCTGCTAACGGCTGCGCAGGGCACTGTGCGGAAGGCTGGAGCGCTGCCAGTCAAGA
ACTTCTGGTCCACAAGAAGAATAAGAAGTGGAGTCGGTACCCGGAGGAAGTGAAGCACTACTGGGT
GTCCCTGAAAGGTTGCACGCTCTTTTTCTATGAGACTGATGGCAGGTCTGGGATAGACCACAACAGTGT
CCCAAGCACGCCGCTGGGTGGAGAACAGCATCGTGCAGGCTGTGCCTGAGCACCCCAAGAAAGACTTCG



TCTTCTGCCTCAGCAACTCCCTGGGTGACGCCTTCTCTTCCAGACCACGAGCCAGACAGAGCTGGAGAA
 CTGGATCACCGCCATCCACTCTGCCTGCGCAGCTGCCGTGCGAAGGCACCACCACAAGGAGGACACGCTC
 CGCCTCTCAAGTCGAAATCAAGAAGCTGGAGCAGAAGATCGACATGGACGAGAAGATGAAGAAGATGG
 GGGAGATGCAGCTGTCTCCGTCAACGACTCGAAGAAGAAGAAGACCATCTAGACCAGATCTTCGTTTG
 GGAGCAGAACCTCGAACAGTCCAGATGGACCTGTTCCGATTCCGCTGTTACCTCGCCAGCCTCCAGGGC
 GGGGAGCTGCCAAACCCAAAAGGCTGCTTGTCTTTGCGAGCCGCCCACGAAGTGGCCATGGGCCGCGC
 TCGGGATCTTCCGTGTATCTTTTCATGCCCTGGTGGCAGCCGGACTGGTGAGATCGGAGTGAGAAG
 GCGTACTCAGGCCATGTCCAGGTCTGCAAGCAAGCGAAGGAGCAGGTTTTCTTCTCTGGGCCTAGAC
 ACTACCTCCAAAAAGAAGCAGGGACGCCAACCATCAACCAGGTGTTTGAGAGGGGACTGATGCTGTAA
 AGAGATCTTTAGAGGGAATATTTGATGACACTGTTCCAGATGGCAAGAGGGAGAAGGAAGTGGTCTTACC
 CAGTGTCCACCAGCACAACCCGACTGTGACATTTGGTCCATGAATATTTCACTCCATCTCGTTCTGT
 CTACCCAAACAACCAGCCAGCCTTGACGGTTGTCCGGCCAGGGGACACTGCGAGGGACACCTTGGAGCTCA
 TTTGCAAGACACATCAACTGGATCATTCCGCCATTACCTGCGCCTGAAATTCCTAATGGAGAACAGAGT
 GCAGTTCTACATCCCGCAGCCCGAGGAGACATTTACGAGCTGCTTTACAAGAAATTTGAAATCTGTCCA
 AAAGTCAACCAGAATATCCACATTGAGAAGTCAGACGCGCCGCTGATAATTACGGGTTTTGTCTTCTT
 CTGTGGATGAAGATGGCATTGAAAGCTCTACGTGAACAGTGTCAAGGAAACCGGTTAGCTTCCAAGAA
 AGGCCTGAAGGCGGGGATGAGATTCTCGAGATCAATAATCGTGTGCTGGTACCCTGAACCTCATCTATG
 CTCAAAGATTTCTCTCACAGCCCTCCCTGGGCCTCCTGGTGAGGACCTACCCTGAGCCAGAGGGAGGCG
 TGGAGCTGCTGGAGAACCCTCCGCACCGAGTGGACGGCCCTGTGGACCTTGGCGAGAGCCCCCTCGCCTT
 CCTCACCAGCAACCCAGGGCACAGCCTCTCCAGTGAGCAGGGCAGCAGTGTGAGACAGCTCCAGAAGAG
 GGCGAAGGACCGACTTGGAGTCTTCTGATGAGACAGATCACAGCAGCAAGAGCACAGAACAGTTGCGAG
 CGTTTTGCGGAGTCTGCACGAGATGAGCCCTCTGACTCAAGCCCGTCCCCTCAGGATGCCACAAGCCC
 TCAGTGGCAACCACAGCAGACTGTGGATGCGGATAAGCTGCGCAAGTGTGATCTGTAAGTGGAG
 ACTGAACGCACCTATGTGAAAGACTTAACTGCCTCATGGAGAGATACCTGAAGCCCTTCAAGAAGGAGA
 CCTTCTCACCCAGGATGAGCTTGTACTTTTTGAAAATTTAACCGAAATGGTGGAGTTTCAAGTCGA
 GTTCTTAAGACTCTAGAAGATGGAGTAAGACTGGTCCCTGACTTGAAAAGCTGGAGAAGTTGACCAG
 TTCAAAGAAAGTCTTCTCTCTGGGGGATCCTTCTGTACTACGCGGACCGCTTCAAGCTCTACAGTG
 CTTTCTGTGCGAGCCACAAAAAGTCCCAAGGTCTGGTGAAGCCAAGACGGACACAGCCTTCAAGGC
 GTTCTCGATGCCAGAACCAGGAGCAGCAGCTCATCCACGCTGGAGTCTTACCTCATCAAGCCCATC
 CAGAGGGTCTCAAGTACCCGCTTCTGCTCAGGGAGCTGTTGCGCTGACCGATGCGGAGAGCGAGGAAC
 ACTACCACCTGGACGTGGCCATCAAGACTATGAACAAGTCCGACGTACATCAATGAGATGCAGAAGAT
 CCACGAAGAGTTGGTGTCTGTTTGACAGCTGATTGCTGAGCAGACGGGAGAGAAGAAAGAGGTTGCA
 GATCTGAGCATGGGTGACCTGCTTGCACACCAGCGTACTTGCTGAACCCACCCGCCTCACTGGGAA
 AGTGGAAAAGGAGCCAGAATTAGCAGCCTTCGTCTTCAAACGGCCGTGGTCTTGTATATAAAGACGG
 TTCCAAGCAGAAGAAGAACTTGTGGCTCTCACAGGCTGTCAATCTACGAGGAGTGGGACCCCTTCCGG
 TTTCCGCCACATGATCCCTACCGAAGCTTTCAGGTCCGAGCTCTGCCAGTGCAGATGCAGAGGCAATG
 CGGTATGCGAAATGTCCACGTGAAATCAGAGTCAGAAGGGAGGCCCGAGCGGTTTTCCACCTCTGCTG
 CAGTTCCCCAGAGAGCAGAAAGGACTTTCTGAAGTCTGTGCATTTCGATCCTGCGAGATAAACACAGAAGA
 CAGCTCCTCAAACGGAAGCCTTCCGTGAGCCAGCAGTATGTCCTTTGGAGGCAAGAGATTGTGTG
 CGCTTAAAGGCGCCAGGCCGGCCATGAGCAGGGCAGTGTCTGCCCAAGCAAGTCTTGGGAGGAGGAG
 GCGGCGACTGGCCGAAACAGGTTTACCATCGATTGAGCAGCCATCTCAGCCAGCAGCCGGAGAAGAG
 CCCCAGCAGCCCGCGTGGTGGGACACTGACCGATGGGTAGAGGAACAGTTTCGATCTTGTCTCAGTACG
 AGGAGCAGGATGACATCAAGGAGACAGACATCCTCAGTGACGATGACGAATTCGTGAGTCCCTGAAGGG
 CGCCTCAGTGGACAGAGACCTTCAGGAGCAGTTCAGGCTGCCTCCATCAGTACGCGGGCCCGAGGCCGG
 AGAACCCTCGATAGCCACGCTCCCGCATGACACAGCTCAAGAAGCAAGCGGCCCTCTCGGGCATCAACG
 GGGCCTGGAGAGTGCAGCGAGGAAGTCAATTTGGGTGAGCGCGAAGACTTTGCCCTCCAGGAACT
 GAACACGGAGATA

ACGCGTACGCGGCCGCTCGAGCAGAACTCATCTCAGAAGAGGATCTGGCAGCAAATGATATCCTGGATT
 ACAAGGATGACGACGATAAGGTTTAA

Protein Sequence: >MR222255 representing NM_001145886
 Red=Cloning site Green=Tags(s)

MGNAESQNVDHEFYGEKHASLGRKHTSRSLRSLSHKTRRTRHASSGKAIHRNSEVSTRSSSTPSIPQSLAE
 NGLPEFSSQEGALDDFGDPIWVDRVDMGLRPVSYTDSVTPSVVDGSI VLTAAASVQSMPSDSEESRLYGDAT
 YLAEGGRRQCPYTSNGPTFMETASFKKRKSADIWREDSLEFSLSDLSQEHLTSNEEILGSAEEKDCEE
 ARGMETEASPRQLSTCQRANSLGDL YAQKNSGVKANGGPRNRFSSYCRNLVSDIPDLAKHKMPAAAEET
 PPYSNYNTLPCRKSHCLSEGATNPQISLSKSMQGRRAKTQDVNTGEGSEFADSGIEGATTDLLSRRS
 NATNSSYSPTGRAFGVSDSGSSSTGDAARQGVYENFRRELEMSTTNSELEEAGSAHSDEQSSGTLSSP
 GQSDILLTAAQGTVRKAGALAVKNFLVHKKNKVE SATRRKWKHYVWSLKGCTLFFYETDGRSGIDHNSV
 PKHAVVWENSIVQAVPEHPKDFVFLSNLGD AFLFQTTSQTELENWITAIHSACAAVARHHKEDTL
 RLLKSEIKKLEQKIDMDEKMKMGEMQLSSVTDSKSKKTILDQIFVWEQNL EQFQMDLFRFCYLASLQG
 GELPNPKRLLAFASRPTKVAMGRLGIFSVSSFHALVAARTGEIGVRRRTQAMSRASAKRRSRFSSLWGLD
 TTSKKKQGRPTINQVFGEGTDAVKRSLEGIFDDTVPDGKREKEVLP SVHQHNPDCDIWVHEYFTPSWFC
 LPNNQPALTVVRPGDTARDTLELICKTHQLDHSAYHLRLKFLMENVQFYIPQPEEDIYELLYKEIEICP
 KVTQNIHIEKSDAAADNYGFLSSVDEEDGIRRLYVNSVKETGLASKKGLKAGDEILEINNRAAGTLNSSM
 LKDFLSQPSLGLLVRTYPEPEGVLEENPPHRVDGPVDL GESPLAFLTSNPGHLSSEQSSAETAPEE
 GEGPDLESSEDETDSKSTEQVAFCRSLHEMSPSSDSSPQDATSPQLATTRQLSDADKLKVICELLE
 TERTYVKDLNCLMERYLKPLQKETFLTQDELDVLFGNLTEMVEFQVEFLKTLLEDGVRLVPDLEKLEKVDQ
 FKKVLFSLGGSFLLYADRFLYSAF CASHTKVPKVLVKAKTDTAFKAFDAQNPRQHSSTLESYLKPI
 QRVLYKPLLLREL FAL TDAESEEHYHLDVAIKTMNKVASHINEMQKIHEEF GAVFDQLIAEQTGEKKEVA
 DL SMGDL LLLHTSVIWL NPPASL GKWKKEPELAAFVFKTAVVLVYKDGSKQKKL VGSHRLSIYEEWDPFR
 FRHMIPTALQVRALPSADAEANAVCEI VHVKSESEGRPERV FHLCCSSPESRKDFLKS VHSILRDKHRR
 QLLKTESLPSAQYVYVFGGKRLCALKGARPA MSRAVSAPSKSLGRRRRRLARNRFTIDSDAISASSPEKE
 PQQPAGGGDTRWVEEQFDLAQYEEQDDIKETDILSDDDFCESLKGASVDRDLQEQLQAASISQRARGR
 RTLDASHASRTQLKKQAALSGINGGLESASEEVIWVRREDFAPSRKLNTEI

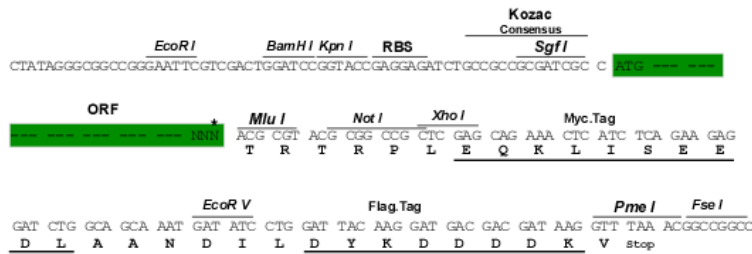
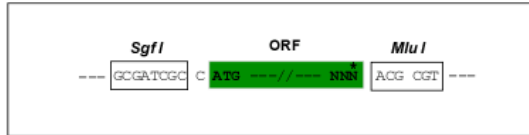
TRTRPLEQKLISEEDLAANDILDYKDDDDKV

Restriction Sites:

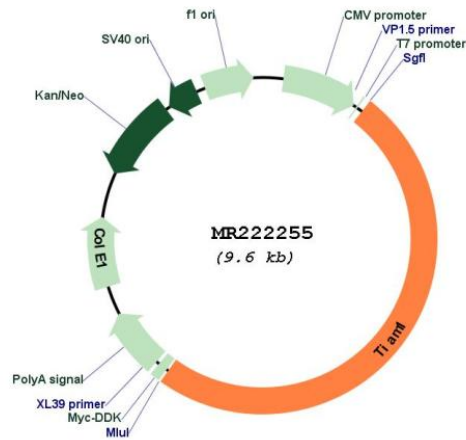
Sgfi-MluI

Cloning Scheme:

Cloning sites used for ORF Shuttling:



* The last codon before the Stop codon of the ORF

Plasmid Map:


ACCN: NM_001145886

ORF Size: 4773 bp

OTI Disclaimer: The molecular sequence of this clone aligns with the gene accession number as a point of reference only. However, individual transcript sequences of the same gene can differ through naturally occurring variations (e.g. polymorphisms), each with its own valid existence. This clone is substantially in agreement with the reference, but a complete review of all prevailing variants is recommended prior to use. [More info](#)

OTI Annotation: This clone was engineered to express the complete ORF with an expression tag. Expression varies depending on the nature of the gene.

Components: The ORF clone is ion-exchange column purified and shipped in a 2D barcoded Matrix tube containing 10ug of transfection-ready, dried plasmid DNA (reconstitute with 100 ul of water).

Reconstitution Method:

1. Centrifuge at 5,000xg for 5min.
2. Carefully open the tube and add 100ul of sterile water to dissolve the DNA.
3. Close the tube and incubate for 10 minutes at room temperature.
4. Briefly vortex the tube and then do a quick spin (less than 5000xg) to concentrate the liquid at the bottom.
5. Store the suspended plasmid at -20°C. The DNA is stable for at least one year from date of shipping when stored at -20°C.

RefSeq: [NM_001145886.1](#), [NP_001139358.1](#)

RefSeq Size: 7277 bp
RefSeq ORF: 4776 bp
Locus ID: 21844
Cytogenetics: 16 51.5 cM
MW: 177.9 kDa