

Product datasheet for **MR222252**

Cd93 (NM_010740) Mouse Tagged ORF Clone

Product data:

Product Type:	Expression Plasmids
Product Name:	Cd93 (NM_010740) Mouse Tagged ORF Clone
Tag:	Myc-DDK
Symbol:	Cd93
Synonyms:	6030404G09Rik; AA4.1; AA145088; AW555904; C1qr1; C1qrp; Ly68
Mammalian Cell Selection:	Neomycin
Vector:	pCMV6-Entry (PS100001)
E. coli Selection:	Kanamycin (25 ug/mL)



[View online »](#)

ORF Nucleotide
Sequence:

>MR222252 representing NM_010740
Red=Cloning site Blue=ORF Green=Tags(s)

TTTTGTAATACGACTCACTATAGGGCGGCCGGAATTCGTCGACTGGATCCGGTACCGAGGAGATCTGCC
GCCCGCATCGCC

ATGGCCATCTCAACTGGTTTGTCTCTGCTGCTGGGGCTCCTTGGCCAGCCCTGGGCAGGGCTGCTGCTG
ATTCACAGGCTGTGGTGTGCGAGGGGACTGCCTGCTATACAGCCATTGGGGCAAGCTGAGTGCCGCTGA
AGCCCAGCATCGCTGCAATGAGAATGGAGGCAATCTTGCCACCGTGAAGAGTGAGGAGGAGGCCCGCAT
GTTCAGCAAGCCCTGACTCAGCTCCTGAAGACCAAGGCACCCCTTGAAGCAAAGATGGGCAAATCTGGA
TCGGGCTCCAGCGAGAGAAGGGCAACTGTACGTACCATGATTTGCCAATGAGGGGCTTCAGCTGGTGGG
TGGTGGAGAGGACACAGCTTATTCAACTGGTACAAAGCCAGCAAGAGCTCCTGTATCTTAAACGCTGT
GTGTCCCTCACTGGACCTGCCTTGACACCTCACCCAGCCATCTGCCAAGTGGCATGAGAGTCCCT
GTGGGACCCCGAAGCTCCAGGTAACAGCATTGAAGTTTCTGTGCAAGTTCAACTTCAAAGGCATGTG
TAGGCCACTGGCGCTGGGTGGTCCAGGGCGGGTGACCTATACCACCCCTTCCAGGCCACTACCTCTCT
CTGGAGGCTGTGCCTTTTGCCTCTGTAGCAATGTAGCTTGTGGGGATGAAGCTAAGAGTGAAACCCACT
ATTTCTATGCAATGAAAAGACTCCAGGAATATTTCACTGGGGCAGCTCAGGCCACTCTGTGTACAGCC
CAAGTTTGGTTGCAGTTTCAACAACGGGGGCTGCCAGCAGGATTGCTTCGAAGGTGGCGATGGCTCCTTC
CGCTGCGGCTGCCGGCTGGATTTGACTGCTGGATGATCTAGTAACTTGTGCCTCCAGGAACCCCTGCA
GCTCAAACCCATGCACAGGAGGTGGCATGTGCCATTCTGTACCACTCAGTGAAAACACTTGCCTGTTG
TCCCAGCGGCTACCAGCTGGACTCTAGCCAAGTGCAGTGTGTGGATATAGATGAGTGCCAGGACTCCCC
TGTGCCAGGATTGTGTCAACACTCTAGGGAGCTTCCACTGTGAATGTTGGTTGGTTACCAACCCAGTG
GCCCCAAGGAAGAGGCCGTGAAGATGTGGATGAGTGTGCAGCTGCCAAGTCCCTGTGCCAAGGCTG
CATCAACACTGATGGCTCTTTCTACTGCTCCTGTAAAGAGGGCTATATTGTGTCTGGGGAAGACAGTACC
CAGTGTGAGGATATAGATGAGTGTTCGGACGCAAGGGCAATCCATGTGATTCCCTGTGCTTCAACACAG
ATGTTTCTTCAGGTGTGGCTGCCCGCCAGGCTGGGAGCTGGCTCCCAATGGGGTCTTTTGTAGCAGGGG
CACTGTGTTTTCTGAACTACCAGCCAGGCTCCCCAAAAGGAAGACAACGATGACAGAAAGGAGAGTACT
ATGCTCCTACTGAAATGCCAGTTCTCCTAGTGGCTCTAAGGATGTCTCCAACAGAGCACAGACAACAG
GTCTCTCGTCCAATCAGATATCCCACTGCCTCTGTTCCACTAGAAAATAGAAAATCCCTAGTGAAGTATC
TGATGTCTGGTTCGAGTTGGGCACATACCTCCCCACGACCTCCGGCCACAGCAAGCCGACACATGAAGAT
TCTGTGTCTGCACACAGTGACACCGATGGGCAGAACCTGCTTCTGTTTTACATCTGGGGACGGTGGTGG
CCATCTCACTCTTGTGTGTGCTGCCCTAGGGATTCTCATTTATCATAAACGGAGAGCCAAGAAGGAGGA
GATAAAAGAGAAGAAGCCTCAGAATGCAGCCGACAGCTATTCTGGGTTCCAGAGCGAGCAGAGAGCCAA
GCCCCGGAGAATCAGTACAGCCCAACACCAGGGACAGACTGC

ACGCGTACGCGGCCGCTCGAGCAGAACTCATCTCAGAAGAGGATCTGGCAGCAATGATATCCTGGATT
ACAAGGATGACGACGATAAGGTTTAA

Protein Sequence: >MR222252 representing NM_010740
 Red=Cloning site Green=Tags(s)

MAISTGLFLLLLGLLGQPWAGAAADSQAVVCEGTACYTAHWGKLSAAEAQHRCNENGGNLATVKSEEEARH
 VQALQLLKTKAPLEAKMGKFWIGLQREKGNCTYHDLPMRGFSWVGGGEDTAYSNNWYKASKSSCIFKRC
 VSLILDLSLTPHPSHLPKWHESPCGTPEAPGNSIEGFLCKFNFKGMCRPLALGGPGRVTTYTPFQATTSS
 LEAVPFASVANVACGDEAKSETHYFLCNEKTPGIHFWGSSGPLCVSPKFGCSFNNGGCQQDCFEGGDGSF
 RCGCRPGFRLLDDLVTCSRNPCCSNPCTGGGMCHSVPLSENYTCRCPSGYQLDSSQVHCVDIDECQDSP
 CAQDCVNTLGSFHCECWVGYQPSGPKKEEACEDVDECAAANSPCAQGCINTDGSFYCSCKEGYIVSGEDST
 QCEDIDECSDARGNPCDSLFCNTDGSFRGCPPGWELAPNGVFCRGTVSELPARPPQKEDNDDRKEST
 MPPTMPPSSPGSKDVSNAQTTLGVQSDIPTASVPLEIEIPSEVSDVWFELGTYLPTTSGHVKPTHEID
 SVSAHSDTDGQNLFFYLGTVAISLLLVLALGILYHKRRAKKEEIKEKKPQNAADSYSWPERAESQ
 APENQYSPTPGTDC

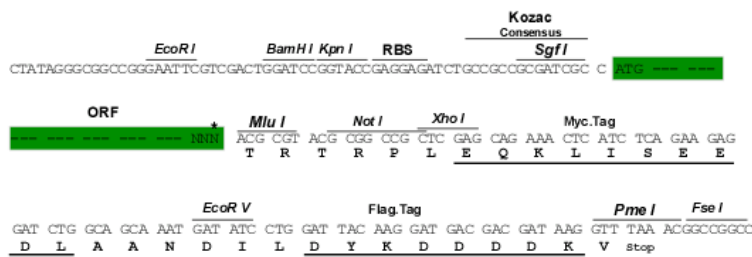
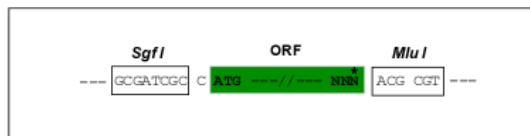
TRTRP**LEQKLI**SEEDLAANDIL**YK**DDDDK**V**

Chromatograms: https://cdn.origene.com/chromatograms/mm9005_a09.zip

Restriction Sites: SgfI-MluI

Cloning Scheme:

Cloning sites used for ORF Shuttling:



* The last codon before the Stop codon of the ORF

ACCN: NM_010740

ORF Size: 1932 bp

OTI Disclaimer: The molecular sequence of this clone aligns with the gene accession number as a point of reference only. However, individual transcript sequences of the same gene can differ through naturally occurring variations (e.g. polymorphisms), each with its own valid existence. This clone is substantially in agreement with the reference, but a complete review of all prevailing variants is recommended prior to use. [More info](#)

OTI Annotation: This clone was engineered to express the complete ORF with an expression tag. Expression varies depending on the nature of the gene.

Components: The ORF clone is ion-exchange column purified and shipped in a 2D barcoded Matrix tube containing 10ug of transfection-ready, dried plasmid DNA (reconstitute with 100 ul of water).

Reconstitution Method:

1. Centrifuge at 5,000xg for 5min.
2. Carefully open the tube and add 100ul of sterile water to dissolve the DNA.
3. Close the tube and incubate for 10 minutes at room temperature.
4. Briefly vortex the tube and then do a quick spin (less than 5000xg) to concentrate the liquid at the bottom.
5. Store the suspended plasmid at -20°C. The DNA is stable for at least one year from date of shipping when stored at -20°C.

RefSeq: [NM_010740.3](#), [NP_034870.1](#)

RefSeq Size: 6638 bp

RefSeq ORF: 1935 bp

Locus ID: 17064

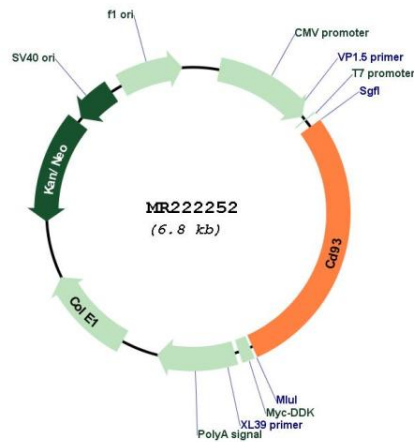
UniProt ID: [O89103](#)

Cytogenetics: 2 73.48 cM

MW: 69.8 kDa

Gene Summary: Receptor (or element of a larger receptor complex) for C1q, mannose-binding lectin (MBL2) and pulmonary surfactant protein A (SPA). May mediate the enhancement of phagocytosis in monocytes and macrophages upon interaction with soluble defense collagens. May play a role in intercellular adhesion. Marker for early multipotent hematopoietic precursor cells. May play a role in cell-cell interactions during hematopoietic and vascular development. [UniProtKB/Swiss-Prot Function]

Product images:



Circular map for MR222252