

Product datasheet for **MR222092**

Slc4a11 (NM_001081162) Mouse Tagged ORF Clone

Product data:

Product Type:	Expression Plasmids
Product Name:	Slc4a11 (NM_001081162) Mouse Tagged ORF Clone
Tag:	Myc-DDK
Symbol:	Slc4a11
Synonyms:	AI503023; BTR1; NaBC1
Mammalian Cell Selection:	Neomycin
Vector:	pCMV6-Entry (PS100001)
E. coli Selection:	Kanamycin (25 ug/mL)



[View online »](#)

ORF Nucleotide
Sequence:

>MR222092 representing NM_001081162
 Red=Cloning site Blue=ORF Green=Tags(s)

TTTTGTAATACGACTCACTATAGGGCGGCCGGGAATTCGTGACTGGATCCGGTACCGAGGAGATCTGCC
 GCC**CGGATCGCC**

ATGTCACAGAATGAACACTGTCAGGACTCCGGTGAATACTTCTCAGCCGGCACTCAGGGATACTTCAAGA
 ACAACATGGAGGATAACCTTGAAGTCCGGGAAGACAGCCTAGGGGATGAGGTCTTTGACACCGTCAACTC
 CTCCATTGTGTCTGGCGAGAGCATCCGGTTTTTTGTCAATGTCAACCTTGAAGTGACGCCCTCCAATCT
 GACTTAGAAGCTGCAACGGGTGGCTGCGTCTTACACACCTCTCGCAAGTATCTGAAATTGAAGAACT
 TTGAGGAAGAGGTCCGTGCACACCGGGACTGGATGGCTTCTGGCCCAGGCCAGCATCATCTGAATGA
 GACAGCTACCTACTGGATGATGTCCTCCGAACATGCTAAACCGCTTTGCCCTGGACCTAACCCACGCA
 GAACCTGACTGTGACCTGGACCTGCTCATGGCTAAGCTCTTACAGATGCTGGAGCCCTATGGAGAGCA
 AGGTCCACCTGCTGCAGATACCATCCAGGGAGTCACTGCCACTGTCGAGGGGTGCAGTACGAGCAGTC
 TTGGCTCTGCATCATCTGTACCATGAAGACCCTACAGAAACGGCATGTGTGCATCAGCCGCTGGTTTCCA
 CCACAGAACTGGGGGAGAACTCCTGTGAGGTTGCTTTGTATCCTGGTCTGGCCCCACCCAAGATGA
 AAAGCACCAAGACTGCAATGGAGGTGGCACGACCTTTGCCACCATGTTCTCAGACATCACCTTCCGCCA
 GAAGTCTCTGAAGACTCGCACAGAGGAAGAATCAAGGAGGCTCTGGTGCATCAGAGACAGCTGCTCACC
 ATGATGATGCCAAGAGCCGAGGGCACAGCATGAGCTCCCTCCATACTCAGACACCCCTCAGCCCCCGA
 AATGCAAGGACTTTTTCCCTTTTGGAAAGGGCATCTGGATGGATATCATGCGCAGGTTTCTGTGTACCC
 AATGGACTTCACTGATGGCATCATTGGGAAAAGCAAGAGCGTGGGCAAAATATGTCACCACCACACTTTC
 CTCTACTTCGCTGCCTCCTACCGACATTGCTTTTGGATCCCTCAACGATGAGAACAACAAACGGGGCCA
 TCGATGTGCAGAAAGACCATAGCTGGACAGAGCATCGGAGGCCTTGTATGCATGTTCTCTGGCAGCC
 CCTGGTGATACTGTTGACAACCGCACCCCTGGCCATCTACACCCAGGTGATTTCGAGTCATCTGTGATGAC
 TACAATCTGGACTTCAACGCCTTCTATGCATGGACGGCCTGTGGAACAGTTTCTTCTTGCACCTTATG
 CCTTCTCAACCTCAGCCTGCTTATGAATCTCTTAAAGAGGTCTACAGAGGAAATCATTGCTCTGTTTAT
 TTCCATCACGTTTGTGCTGGATGCTGTCAAGGGCATGGTCAAAATCTTCGGGAAGTACTACTATGGTAC
 CACTACCACACAAAAAGGACTTCTCCTTGGTGGCCTGTTGGGATTGGCAGAAGCCCCAACAGCAGTC
 TCCACTGCCTCAACGCCAGCCTCTTGGCCAGCCCCGTAGAGATGGCCACAACCAGCAGCCCCGGCAG
 CACACTCGGGCCAGGCTACAGCGGTGCTCAGCCTCCTCATCATGTTGGGCACACTCTGGCTAGGCTAC
 ACCCTCTACCAGTTCAAGAAAAGCCCTACCTGCACCCATGTGTGCGTGAGACCCTGTCTGACTGTGCC
 TGCCCATCGCCGTGCTCTCCTTCCCTCATCGGCTCCTATGGCTTCCAGGAAATTGAGATGAGCAAGTT
 CCGGTATAACCCAGCGAGAGCCTTTTTGAGGTGGCACAGATCCACTCTCTGTCTTCAAGGCCATCGGC
 AGTGCCATGGGTCTTGGTTTCTGCTCTCCTTGTCTTTCTTATTGAGCAGAACCCTGGTGGCGGCCCTGG
 TCAATGCACCAGAGAACAGGCTGGTGAAGGGCACTGCCTATCACTGGGATCTCCTGCTACTTGCCATCAT
 CAATACGGGGCTGTCTCTGTTTGGGCTACCCTGGATCCACGCCGCTATCCCCACTCCCCCTGCATGTG
 CGGGCACTGGCCTTAGTGGAGGAACCGTGGAGAATGGGCACATTTATGAAACGATTGTGGATGTTAAGG
 AGACTCGGCTGACGGCGCTGGGTGCCAGTGTCTGGTGGGCTGTCTTGTGCTGCTGCCATTCCTCT
 GCAGTGGATCCCCAAGCCTGTGCTGTATGGCTCTTCTGTACATTGCACTGACCTCCCTGGACGGCAAC
 CAGCTCTTCTCGCGTGTGGCCCTGCTGCTCAAGGAGCAGACATCATACCCACCCACACTACATCCGGA
 GAGTGCCCAAAGGAAGATCCACTACTTACAGGCCTGCAGATCCTGCAGCTGCTACTGCTGTGCCTT
 CGGCATGAGCTCCCTGCCCTACATGAAGATGGTCTTCCCTCATCATGATTGCCATGATTCCAATCCGG
 TACAATCTGTACCCGAATCATTGAGGCCAAGTACTGGATGTCATGGATGCTGAGCATAGGCC

AG**CGGACCG**ACGCGTACGGCGCGCTCGAGCAGAACTCATCTCAGAAGAGGATCTGGCAGCAAATGATATCC
 TGGATTACAAGGATGACGACGATAAGGTTTAA

Protein Sequence: >MR222092 representing NM_001081162
 Red=Cloning site Green=Tags(s)

MSQNEHCQDSGEYFSAGTQGYFKNNMEDNLEVREDSLGDEVFDTVNSSIIVSGESIRFFVNVNLEVQPSKS
 DLEAATGGCVLLHTSRKYLKLNFEVEVRAHRDLGFLAQASIILNETATSLDDVLRTMLNRFALDPNHA
 EPDCDLDLLMAKLFDTAGAPMESKVHLLSDTIQGVATVIRGVQYEQSWLCIICMKTLOKRHVCSIRLVR
 PQNWGENSCEVRFVILVLAPPKMKSTKTAMEVARTFATMFSDITFRQKLLKTRTEEFKEALVHQRLT
 MPMRAAGHSMSLLHTRHPQPPKCKDFPFPGKIWMDIMRRFPVYPMDFTDGIIGKSKSVGKYVTTTLF
 LYFACLLPTIAFGSLNDENTNGAIDVQKTIAGQSIGLLYALFSGOPLVILLTTAPLAIYTVQVIRVICDD
 YNLDFNAFYAWTGLWNSFFLALYAFNLNLLMNLFKRSTEEIIALFISITFVLDAYKGMVKIFGKYGGH
 HYHTKRTSSLVLLGIGRSPNSSLHTALNASLLASPVEMATTSSPGSTHSGQATAVLSLLIMLGTWLGY
 TLYQFKKSPYLHPCVRETLSDCALPIAVLSFSLIGSYGFQEIEMSKFRYNPSESLFEVAQIHSLSFKAIG
 SAMGLGFLLSLLFFIEQNLVAALVNAPENRLVKGTAYHWDLLLLAIINTGLSLFGLPWIHAAYPHSPLHV
 RALALVEERVENGHYETIVDVKETRLTALGASVLVGLSLLLLPFPLQWIPKPVLYGLFLYIALTSLDGN
 QLFSRVALLLKEQTSYPPTHYIRRVPRKIHFTGLQILQLLLLCAFGMSSLPYMKMVFPLIMIAMIPIR
 YNLLPRIIEAKYLDVMDAEHRP

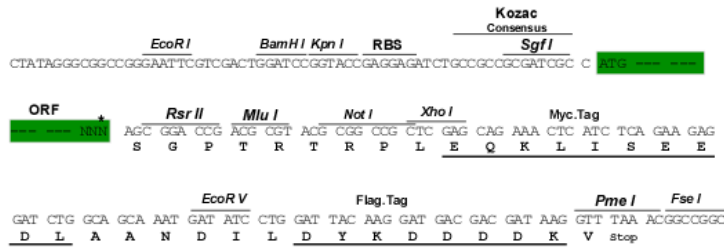
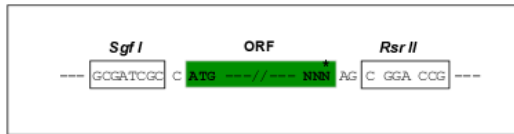
SGP TRTRPLEQKLI SEEDLAANDILDYKDDDDKV

Chromatograms: https://cdn.origene.com/chromatograms/mm9003_e11.zip

Restriction Sites: SgfI-RsrII

Cloning Scheme:

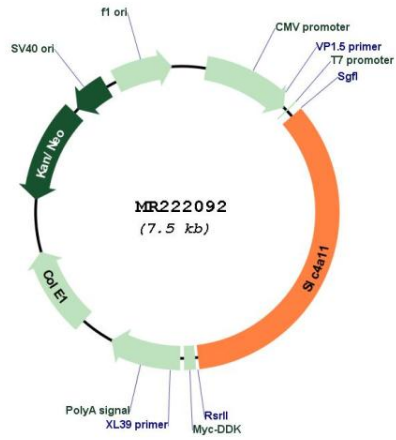
Cloning sites used for ORF Shuttling:



* The last codon before the Stop codon of the ORF

ACCN:	NM_001081162
ORF Size:	2586 bp
OTI Disclaimer:	The molecular sequence of this clone aligns with the gene accession number as a point of reference only. However, individual transcript sequences of the same gene can differ through naturally occurring variations (e.g. polymorphisms), each with its own valid existence. This clone is substantially in agreement with the reference, but a complete review of all prevailing variants is recommended prior to use. More info
OTI Annotation:	This clone was engineered to express the complete ORF with an expression tag. Expression varies depending on the nature of the gene.
Components:	The ORF clone is ion-exchange column purified and shipped in a 2D barcoded Matrix tube containing 10ug of transfection-ready, dried plasmid DNA (reconstitute with 100 ul of water).
Reconstitution Method:	<ol style="list-style-type: none">1. Centrifuge at 5,000xg for 5min.2. Carefully open the tube and add 100ul of sterile water to dissolve the DNA.3. Close the tube and incubate for 10 minutes at room temperature.4. Briefly vortex the tube and then do a quick spin (less than 5000xg) to concentrate the liquid at the bottom.5. Store the suspended plasmid at -20°C. The DNA is stable for at least one year from date of shipping when stored at -20°C.
RefSeq:	NM_001081162.1 , NP_001074631.1
RefSeq Size:	3201 bp
RefSeq ORF:	2589 bp
Locus ID:	269356
UniProt ID:	A2AJN7
Cytogenetics:	2 F1
MW:	97.2 kDa
Gene Summary:	Transporter which plays an important role in sodium-mediated fluid transport in different organs. Prevents severe morphological changes of the cornea caused by increased sodium chloride concentrations in the stroma. In the inner ear, is involved in transport of potassium through the fibrocyte layer to the stria vascularis and is essential for the generation of the endocochlear potential but not for regulation of potassium concentrations in the endolymph. In the kidney, is essential for urinary concentration, mediates a sodium flux into the thin descending limb of Henle loop to allow countercurrent multiplication by osmotic equilibration. Involved in borate homeostasis. In the absence of borate, it functions as a Na(+) and OH(-)(H(+)) channel. In the presence of borate functions as an electrogenic Na(+) coupled borate cotransporter.[UniProtKB/Swiss-Prot Function]

Product images:



Circular map for MR222092