

## Product datasheet for **MR222003**

### **Pcsk5 (NM\_001163144) Mouse Tagged ORF Clone**

#### **Product data:**

Product Type:	Expression Plasmids
Product Name:	Pcsk5 (NM_001163144) Mouse Tagged ORF Clone
Tag:	Myc-DDK
Symbol:	Pcsk5
Synonyms:	b2b585C; b2b585Clo; b2b1549C; b2b1549Clo; PC; PC5; PC5/; PC6; SP; SPC6
Mammalian Cell Selection:	Neomycin
Vector:	pCMV6-Entry (PS100001)
E. coli Selection:	Kanamycin (25 ug/mL)



[View online »](#)

**ORF Nucleotide Sequence:**

>MR222003 representing NM\_001163144  
 Red=Cloning site Blue=ORF Green=Tags(s)

TTTTGTAATACGACTCACTATAGGGCGGCCGGGAATTCGTCGACTGGATCCGGTACCGAGGAGATCTGCC  
 GCC**CGCATCGCC**

ATGGACTGGGACTGGGGAAACCGCTGCAGCCGCCCGGACGGCGGGACCTGCTGTGCGTGTGGCACTGC  
 TCGCCGGCTGTCTGCTCCCGGTATGCCGGACGCGCGTCTACACCAACCACTGGGCAGTGAAGATCGCCGG  
 CGGCTTCGCGGAGGCAGATCGCATAGCCAGCAAGTACGGATTCATCAACGTAGGACAGATCGGTGCACTG  
 AAGGACTACTATCACTTCTACCATAGTAGGACCATTAAAAGGTCTGTTCTCTCGAGCAGAGGAACCCACA  
 GTTTCATTTCAATGGAACCAAAGGTGGAGTGGATCCAACAGCAAGTGGTAAAAAAGAACCAAGAGGGA  
 TTATGACCTCAGCCATGCCAGTCAACCTACTTCAATGATCCCAAGTGGCCAAGTATGTGGTACATGCAC  
 TGCAGTGACAACCCCATCCTTGCCAGTCAGACATGAATATCGAAGGAGCCTGGAAGAGAGGCTACACGG  
 GGAAGAATATCGTGGTACTATCCTGGATGACGGCATCGAGAGAACCACCCAGATCTGATGCAAAACTA  
 CGATGCTCTGGCAAGTTGCGATGTGAATGGGAATGACTTGGACCCGATGCCTCGTTATGATGCAAGCAAT  
 GAGAACAAGCATGGGACCCGCTGTGCCGAGAAGTGGCAGCCACTGCAAACAACCTCACTGCACCTGTCG  
 GGATCGCTTTCAACGCCAAGATTGGAGGTGTGAGAATGCTGGATGGTGTGCTCACTGACATGGTGGAGGC  
 AAAGTCTGTGCTAGCTACAACCCACAGCATGTGCACATCTACAGTGCCAGCTGGGGACCAGATGACGATGGC  
 AAGACTGTGGATGGGCCAGCTCCCTCACCCGCAAGCCTTTGAGAACGGCGTGAGAATGGGGCGGAGAG  
 GCCTTGGATCTGTGTTGTGTGGGCATCTGGCAATGGTGGACGGAGCAAGGATCACTGTTCTTGTGATGG  
 CTATACCAACAGCATCTATACCATCTCCATCAGCAGTACGGCCGAAAGTGGAAAGAAACCTTGGTACTTG  
 GAAGAGTGTTTCACTACTGGCTACAACCTACAGCAGTGGAGAATCCTATGATAAGAAAATAATCACTA  
 CTGATCTAAGGCAGCGATGCACAGACAATCACACTGGAACATCAGCCTCAGCCCCATGGCTGCTGGAAT  
 CATTGCCCTGGCCCTAGAAGCCAATCCGTTTCTGACCTGGAGAGCGTGCAGCATGTTATTGTGAGGACT  
 TCCCGTGCGGGACATTTGAACGCTAATGACTGGAAAACCAATGCTGCTGTTTTAAGGTGAGCCATCTCT  
 ATGGATTTGGACTGATGGATGCCGAAGCCATGGTGTGGAAGCAGAGAAGTGGACAACCTGTTCTCAGCA  
 GCACGTGTGTGTGAAAGCACAGACCGACAATCAAGACCATTGACCAACAGTGCAGTGCCTCCATC  
 TACAAAGCCTCAGGCTGCTCGGATAATCCCAACCATCACGTCAATTACCTGGAGCATGTAGTTGTGCGTA  
 TTACCATCACACCCACGGAGGGGAGACCTGGCCATCTATCTGACATCACCCCTCAGGAACCAGATCCCA  
 GCTCTTGGCCAACAGGCTCTTTGATCATTCCATGGAAGGGTTAAGAAGTGGGAGTTCATGACTATTCAT  
 TGCTGGGAGAACGGGCTGCTGGGACTGGGTCTCGAAGTTTATGATACGCCATCTCAGCTGAGGAACT  
 TCAAGACTCCAGTAAATTTGAAAGAATGGTCTTAGTCCTCTATGGCACGTCCGTACAGCCATACTCCCC  
 AACCAACGAGTTTCCAAAGTGGAAACGCTTCCGCTACAGCCGAGTGGAAAGCCCCACAGATGACTACGGT  
 GCTGAAGATTATGCAGGTCCCTGTGACCCTGAATGCAGTGAAGTGGATGTGACGGGCCAGGACCAGATC  
 ACTGCAGTACTGCTTACTACTACTACAAGCTGAAAAATAACACCAGAATCTGTGCTCCAGCTGCC  
 TCCTGGCCACTACCATGCTGACAAGAAGAGATGCCGGAAGTGTGCCCAAACCTGCGAGTCCCTGCTTTGGC  
 AGCCATGGTAATCAGTGCCTCCTCTGTAATATGGCTACTTCTGAATGAAGAACTAGCAGCTGTGTTA  
 CTCAGTGCCCTGATGGATCATACGAGGATCAAGAAAAATGTCTGTGGGAAATGCAGTGAAGTGC  
 GGCATGCATTGGATTTCACAACTGCACAGAGTGAAGGGCGGGTTAAGTCTTCAGGGATCCCCTGTTTCG  
 GTCACCTGCGAGGATGGACAGTTCTTCAATGGTACGACTGCCAGCCCTGCCATCGCTTCTGTGCTACTT  
 GCTCTGGGCGGAGCAGATGGATGATTAAGTGCACCGAGGGGTATGTCATGGAAGAGGGAAGGTGTG  
 ACAAGTTGTAGTGTGAGCTACTACTTGGACCACTCTTCAAGGGTGGCTACAAATCCTGCAAGAGATGT  
 GATAACAGCTGTTTGACATGCAATGGGCCAGGATCAAGAACTGTTCCAGCTGCCCCAGTGGATATCTTT  
 TAGACTTAGAACGTGTCAGATGGGAGCCATCTGCAAGGATGCTACGGAAGAGTCTGGGAGAGGAGG  
 CTTCTGTATGCTGTGAAAAAGAACAATCTCTGTGACGAAAAAGTTCTACAACAGCTGTGCTGCAAAACA  
 TGTACATTCGAAGGC

**ACGCGT**ACGCGGCCGCTCGAGCAGAAACTCATCTCAGAAGAGGATCTGGCAGCAAATGATATCCTGGATT  
 ACAAGGATGACGACGATGAGTTTAA

**Protein Sequence:** >MR222003 representing NM\_001163144  
 Red=Cloning site Green=Tags(s)

```
MDWDWGNRCSRPGRRDLLCVLALLAGCLLPVCRTRVYTNHWAVKIAGGF A EADRIASKYGF INVGQIGAL
KDYHYFYHSRTIKRSVLSSRGTHSFISMPEKVEWIIQQQVVKRRTKRDYDL SHAQSTYFNDPKWPSMWMYH
CSDNTHPCQSDMNIEGAWKRGYTGKNI VVTILDDGIERTHPDLMQNYDALASCDVNGNDLDPMPRYDASN
ENKHGTRCAGEVAATANNSHCTVGI AFNAKIGGVRMLDGDVTD MVEAKSVSYNPQHVIHYSASWGPDDDG
KTVDGPAPLTRQAFENGVRMGRRLG S VFWASGNGGRSKDHCS CDGYTNSIYTI S ISSTAESGKKPWYL
EECSSTLATTYSSGESYDKKIITD L RQRCTDNHTGTSASAPMAAGI IALALEANPFLTRWDVQHIVVRT
SRAGHLNANDWKTNAAGFKVSHLYG FGLMDA EAMVMEAEKWTTPQQHVCVESTDRQIKTIRPNSAVRSI
YKASGSDNPNHHVNYLEHV VVRITITHPRRGLAIYLTSPSGTRS QLLANRLFDSMEGFKNWEFMTIH
CWGERAAGDWLEVVYDTPSQLRNFKTPGK LKEWSLVLYGTSVQPYSP TNEFPKVERFRYSRVEDPTDDYG
AEDYAGPCDPECSEVGC DGPDPHCS DCLHYYYK LKNNTRICVSSCPPGHYHADKKRCKCAPNCESCFG
SHGNQCL SCKYGYFLNEETSSCVTQCPDGSYEDIKKNVCGK CSENCKACIGFHNC TECKGGLSLQGSRCS
VTCEDGQFFNGHDCQPCHRF CATCSGAGADGCINCTEGYVMEEGRCVQSCSVSYL DHSSEGGYKSKCRC
DNSCLTCNGPGFKNCSSCP S GYLLDLGT CQMGA ICKDATEE SWAEGGF CMLVKNNL CQRKVLQQLCKT
CTFQG
```

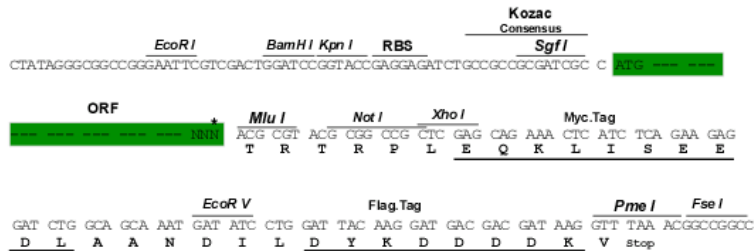
TRTRPLEQKLISEEDLAANDILDYKDDDDKV

**Chromatograms:** [https://cdn.origene.com/chromatograms/mm9007\\_c05.zip](https://cdn.origene.com/chromatograms/mm9007_c05.zip)

**Restriction Sites:** SgfI-MluI

**Cloning Scheme:**

Cloning sites used for ORF Shuttling:



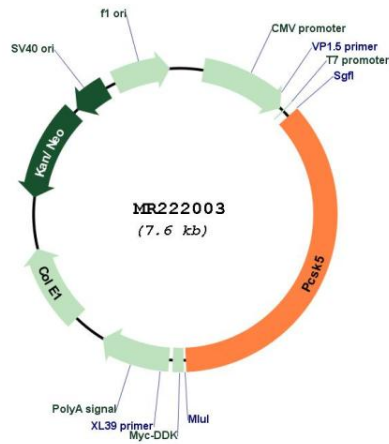
\* The last codon before the Stop codon of the ORF

**ACCN:** NM\_001163144

**ORF Size:** 2745 bp

<b>OTI Disclaimer:</b>	The molecular sequence of this clone aligns with the gene accession number as a point of reference only. However, individual transcript sequences of the same gene can differ through naturally occurring variations (e.g. polymorphisms), each with its own valid existence. This clone is substantially in agreement with the reference, but a complete review of all prevailing variants is recommended prior to use. <a href="#">More info</a>
<b>OTI Annotation:</b>	This clone was engineered to express the complete ORF with an expression tag. Expression varies depending on the nature of the gene.
<b>Components:</b>	The ORF clone is ion-exchange column purified and shipped in a 2D barcoded Matrix tube containing 10ug of transfection-ready, dried plasmid DNA (reconstitute with 100 ul of water).
<b>Reconstitution Method:</b>	<ol style="list-style-type: none"><li>1. Centrifuge at 5,000xg for 5min.</li><li>2. Carefully open the tube and add 100ul of sterile water to dissolve the DNA.</li><li>3. Close the tube and incubate for 10 minutes at room temperature.</li><li>4. Briefly vortex the tube and then do a quick spin (less than 5000xg) to concentrate the liquid at the bottom.</li><li>5. Store the suspended plasmid at -20°C. The DNA is stable for at least one year from date of shipping when stored at -20°C.</li></ol>
<b>RefSeq:</b>	<a href="#">NM_001163144.1</a> , <a href="#">NP_001156616.1</a>
<b>RefSeq Size:</b>	5783 bp
<b>RefSeq ORF:</b>	2748 bp
<b>Locus ID:</b>	18552
<b>Cytogenetics:</b>	19 12.86 cM
<b>MW:</b>	101.9 kDa
<b>Gene Summary:</b>	This gene encodes a subtilisin-like proprotein convertase that mediates posttranslational endoproteolytic processing of various proprotein substrates traversing the secretory pathway. The encoded protein is an inactive zymogen that undergoes autoproteolytic processing in the endoplasmic reticulum and the Golgi network to generate an active enzyme. Mice lacking the encoded protein die at an early embryonic stage. Conditional inactivation this gene in the epiblast but not in the extraembryonic tissue bypasses embryonic lethality but results in death at birth. Alternative splicing results in multiple transcript variants encoding different isoforms. [provided by RefSeq, Jul 2015]

Product images:



Circular map for MR222003