

Product datasheet for MR221987

Aamp (NM_146110) Mouse Tagged ORF Clone

Product data:

Product Type:	Expression Plasmids
Product Name:	Aamp (NM_146110) Mouse Tagged ORF Clone
Tag:	Myc-DDK
Symbol:	Aamp
Synonyms:	Aamp-rs; AU040907
Vector:	pCMV6-Entry (PS100001)
E. coli Selection:	Kanamycin (25 ug/mL)
Cell Selection:	Neomycin
ORF Nucleotide Sequence:	>MR221987 representing NM_146110 Red=Cloning site Blue=ORF Green=Tags(s)

TTTTGTAATACGACTCACTATAGGGCGCCGGAATTCGTCGACTGGATCCGGTACCGAGGAGATCTGCC
GCC**CGGATCGCC**

ATGGAGTCCGAATCGGAGAGCGGAGCGGCCGCTGACACCCCGCCTCTGGAGACTCTGAGCTTTCACGGAG
ATGAAGAGATCATTGAGGTGGTAGAGCTGGATCCAGGCCCGCCGACCCGGATGATCTGGCCAGGAGAT
GGAAGACGTGGACTTTGAGGAAGAGGAAGAAGAAGAAGAGGGCAATGACGAGGGCTGGGTCTTGGAAACC
CAGGAAGGGGTGGTCCGTAGCATGGAGGGCCCGGATGATAGTGAGGTACCTTTGCATTGCACTCAGCGT
CTGTGTTCTGTGTGAGCCTGGACCCAAAACCAACACCTTGGCAGTGACAGGGGGCGAAGACGACAAGGC
CTTCGTGTGGAGGCTCGGTGATGGAGAGCTGCTCTTTGAGTGTGCAGGCCACAAAGACTCTGTGACATGC
GCTGGTTTCAGTCACGATTCCACCCTAGTGGCCACAGGGGACATGAGTGGTCTTTTAAAAGTATGGCAGG
TAGACACCAAGGAAGAAGTCTGGTCCTTTGAAGCAGGAGACCTGGAGTGGATGGAGTGGCACCCCTCGGGC
TCCTGTCTGTGGCGGGCACAGCCGATGGCAACACTTGGATGTGGAAGGTCCCGAATGGTACTGTAAG
ACCTTTCAGGGCCCCAACTGCCCTGCAACCTGTGGCCCGTCTCCCTGATGGGAAGAGACTGTGGTAG
GGTATGAAGATGGTACCATCAGGATCTGGGACCTCAAGCAAGGAAACCCATCCATGTACTAAAAGGGAC
TGAGGGTCATCAGGGCCCTCTGACCTGTGTAGCCACCAACCAGGATGGCAGTCTGATCCTGACTGGCTCT
GTAGACTGCCAGGCCAAGCTGGTCACTGCCACCACTGGCAAGGTGGTGGGTGTGTTGAGACTGAGACAG
TCGCCTCCAGCCAGCCTGGGAGAGGGGGAGGAGTGAAGTCTAACTCCGTGGAGTCTTTGGGCTCTG
CAGTGTACATGCCTCTGGCCGCTGTTGGCTATCTGGACGGAACCTTGGCCATCTATGACCTGTCTACGAC
ACACTCCGGCACCAATGTCAGCACCAGTCGGGCATTGTTCACTGCTGTGGGAGGCTGGCACTGCTGTGG
TGTACACCTGTAGCCTGGATGGTGTGTACGTCTCTGGGATGCCCGGACTGGCCGCTGCTTACTGACTA
CCGGGGCCCACTGCTGAGATCCTGGACTTTGCCCTCAGCAAAGATGCTTCCCTGGTGGTACCACATCA
GGAGACCACAAAGCAAAGTATTTTGTGTCCAGAGACCTGACCGT

ACGCGTACGCGGCCGCTCGAGCAGAAACTCATCTCAGAAGAGGATCTGGCAGCAAATGATATCCTGGATT
ACAAGGATGACGACGATAAGGTTTAA



[View online »](#)

Protein Sequence: >MR221987 representing NM_146110
Red=Cloning site Green=Tags(s)

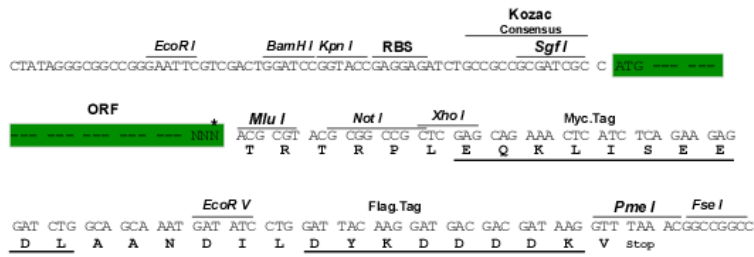
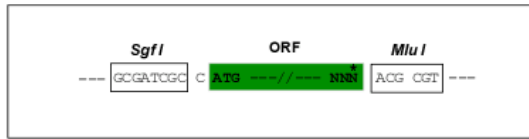
MESESESGAAADTPPLETLSFHGDEEIIIEVVELDPGPPDPDDLAQEMEDVDFEEEEEEEGNDEGWVLEP
 QEGVVGSMEGPDDSEVTFALHSASVFCVSLDPKTNTLAVTGGEDDKAFVWRLGDGELLFECAGHKDSVTC
 AGF SHDSTLVATGDMSSLKVVQVDTKEEVWSFEAGDLEWMEWHPRAPVLLAGTADGNTWMWKVNGDCK
 TFQGPNCPATCGRVLPDGKRAVVGVEDGTIRIWDLKQGNPIHVLKGTGEHQGPLTCVATNQDGSILTGS
 VDCQAKLVSAATTKVVGVFRPETVASQPSLGEGESESNVSESLGFCVMPLA AVGYLDGTLAIYDLSTQ
 TLRHQCHQSGIVQLLWEAGTAVVYTCSLDGVVRLWDARTGRLLTDYRGHTAEILDFALSKDASLVVTTT
 GDHKAKVFCVQRPDR

TRTRPLEQKLISEEDLAANDILDYKDDDDKV

Restriction Sites:
Cloning Scheme:

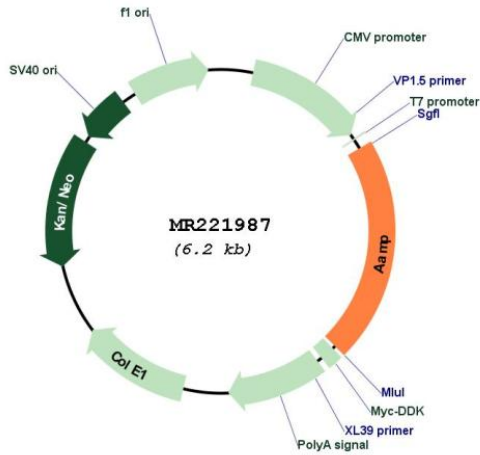
SgfI-MluI

Cloning sites used for ORF Shuttling:



* The last codon before the Stop codon of the ORF

Plasmid Map:



ACCN: NM_146110

ORF Size:	1305 bp
OTI Disclaimer:	The molecular sequence of this clone aligns with the gene accession number as a point of reference only. However, individual transcript sequences of the same gene can differ through naturally occurring variations (e.g. polymorphisms), each with its own valid existence. This clone is substantially in agreement with the reference, but a complete review of all prevailing variants is recommended prior to use. More info
OTI Annotation:	This clone was engineered to express the complete ORF with an expression tag. Expression varies depending on the nature of the gene.
Components:	The ORF clone is ion-exchange column purified and shipped in a 2D barcoded Matrix tube containing 10ug of transfection-ready, dried plasmid DNA (reconstitute with 100 ul of water).
Reconstitution Method:	<ol style="list-style-type: none">1. Centrifuge at 5,000xg for 5min.2. Carefully open the tube and add 100ul of sterile water to dissolve the DNA.3. Close the tube and incubate for 10 minutes at room temperature.4. Briefly vortex the tube and then do a quick spin (less than 5000xg) to concentrate the liquid at the bottom.5. Store the suspended plasmid at -20°C. The DNA is stable for at least one year from date of shipping when stored at -20°C.
RefSeq:	NM_146110.3 , NP_666222.2
RefSeq Size:	1817 bp
RefSeq ORF:	1308 bp
Locus ID:	227290
Cytogenetics:	1 38.53 cM
MW:	47.3 kDa