

Product datasheet for MR221917

Zfp57 (NM_001168502) Mouse Tagged ORF Clone

Product data:

Product Type:	Expression Plasmids
Product Name:	Zfp57 (NM_001168502) Mouse Tagged ORF Clone
Tag:	Myc-DDK
Symbol:	Zfp57
Synonyms:	G19; Zfp-57
Mammalian Cell Selection:	Neomycin
Vector:	pCMV6-Entry (PS100001)
E. coli Selection:	Kanamycin (25 ug/mL)
ORF Nucleotide Sequence:	>MR221917 representing NM_001168502 Red=Cloning site Blue=ORF Green=Tags(s)

TTTTGTAATACGACTCACTATAGGGCGGCCGGAATTCGTCGACTGGATCCGGTACCGAGGAGATCTGCC
GCC**CGATCGCC**

ATGGCAGCTAGGAAACAGCCATCCAGGACACCAGTCAGTTATGAGGACGTGGCAGTGTCTTTCACCCAGG
AAGAATGGGAATATCTTACTTCTACACAGAAGACCCTTTACCAGAAAGTGATGTCAGAAACCTTCAAGAA
CCTGACATTTGTCGGAAGCAAGAAGAAACCTCAAGAACCTAGCTCAGATCTGCAAGATAAGAACGAGGAG
CAGGAGAAGTCTCCAGTTGCACAGGGTATTCAAAGGTGGACCATTCTTTTTCTGTCTGACCTGTGGCA
AATGTTTTCAAAAAGAACCTTCTCTTAATCACCAGTTTCTGTGAGGTCCCGGAGGCTGGCAGTCAC
AAATCCACAAAGCCGCAAGGCAAGGGCTACAAGGCTCAGCATCGTGGAGAGAGGCTTTCTTTTGTAAAT
TTCTGTGGCAAGACTTACCGTGATGCTTCTGGACTGAGCCGTACCCGACGTGCTCATTTAGGTTATAGGC
CCCCTTATGCCCTGAGTGTGAAAAGTGTTCGGGATCAGTCTGAGGTCAACCGTCACTGAAGGTACA
CCAAAACAAGCCAGCAGCTAGCAACCAGGCTGGCAACCAGGCTAGCAACCAGAGGCTGAAGAGTAGGGTT
CCACCTACAACACCTAGATCCCAAGCGCCGCCCTCAAGTATGTGAAAGTGATCCAGGGACCAGTGGCCA
GGGCTAAGGCACGGAACAGCGGAGCCTCGACCCTGAATGTCAGATCCAACCTCTATTACAGTGGTCCGTTT
AAGAGAAAAGATCTCTTGTCCCTATTGTACATAACGTTTACCATGAGAACCTGTCTCTTAACCCACCTC
AAGATCCACTTCAGACGTCAACCAACCAGCACTTCTGCTGCAAAGAGTCGGCCACTCATCCAACACAC
TCAGAATGCAAAAAGATCTACACTTGCCCGTCTGTGACAGCTCCTTTAGGGGAAAGGAGAGCCTGCTGGA
TCACTTGTGCTGCCAAAGACCAATCAGATTCAAGTAAATGCTGGGAAATCCTGGGTCAATTTGCTCGGCTAT
CTTCATGAACCCGTGGTGTGGGAAATATTTTTAAAGTAAAGGACTCCTCGGAAAGAGGATGGAATCCA
GGAGGAGAAGACGGAACGTGCCTGCACTGAGAATCCTGAAACAGAAGGCCTGTCTGGGAAAGGTAGGGT
GGCTCCGTGGGAAATGGAGGGTCCACCAGCCCTGAGAGTCTGTGACAGAAGAAGATTCGGAC

ACGGTACGCGGCCGCTCGAGCAGAAACTCATCTCAGAAGAGGATCTGGCAGCAAATGATATCCTGGATT
ACAAGGATGACGACGATAAGGTTTAA



[View online »](#)

Protein Sequence: >MR221917 representing NM_001168502
Red=Cloning site Green=Tags(s)

MAARKQPSRTPVSYEDVAVSFTQEWEYLSTQKTL YQKVMSETFKNLTFVGSKPKKQPEPSSDLQDKNEE
 QEKSSSCTGVFKGGPFFFLCTCGKCFKNTFLFNHQPVRSRRLAVTNPQSRKKGKYKAQHRGERPFFCN
 FCGKTYRDASGLSRHRAHLGYRPRSCPECGKCFRDQSEVNRHLKVHQNKPAASNQAGNQASNQRLKSRV
 PPTTPRSQAPALKYVKVIQGPVARAKARNSGASTLNVRNSITVVRSEKISCPYCHITFTMRTCLLTHL
 KIHFRRPQNHFCCKESAHSNTLRMQKIYTCPVCDSSFRGKESLLDHLCCQRPPIRFKWEILGHLLGY
 LHEPVVLGNIKVRDSSGKRMSRRRRRRKRACTENPETEGLSGKGRVAPWEMEGATSPESPVTEEDSD

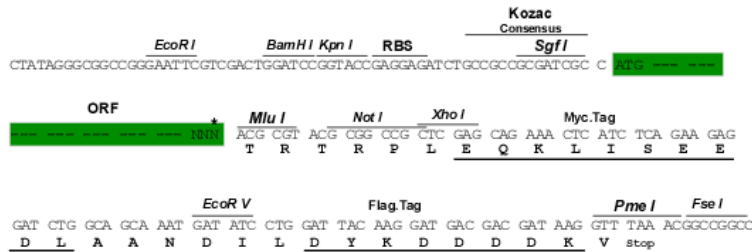
TRTRPLEQKLISEEDLAANDILDYKDDDDKV

Restriction Sites:

SgfI-MluI

Cloning Scheme:

Cloning sites used for ORF Shuttling:



* The last codon before the Stop codon of the ORF

ACCN: NM_001168502

ORF Size: 1254 bp

OTI Disclaimer: The molecular sequence of this clone aligns with the gene accession number as a point of reference only. However, individual transcript sequences of the same gene can differ through naturally occurring variations (e.g. polymorphisms), each with its own valid existence. This clone is substantially in agreement with the reference, but a complete review of all prevailing variants is recommended prior to use. [More info](#)

OTI Annotation: This clone was engineered to express the complete ORF with an expression tag. Expression varies depending on the nature of the gene.

Components: The ORF clone is ion-exchange column purified and shipped in a 2D barcoded Matrix tube containing 10ug of transfection-ready, dried plasmid DNA (reconstitute with 100 ul of water).

Reconstitution Method:

1. Centrifuge at 5,000xg for 5min.
2. Carefully open the tube and add 100ul of sterile water to dissolve the DNA.
3. Close the tube and incubate for 10 minutes at room temperature.
4. Briefly vortex the tube and then do a quick spin (less than 5000xg) to concentrate the liquid at the bottom.
5. Store the suspended plasmid at -20°C. The DNA is stable for at least one year from date of shipping when stored at -20°C.

RefSeq: [NM_001168502.1](#), [NP_001161974.1](#)

RefSeq Size: 2088 bp

RefSeq ORF: 1257 bp

Locus ID: 22715

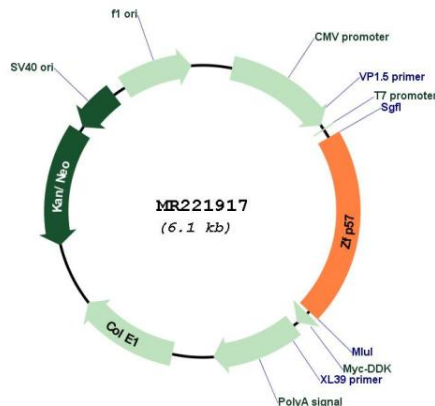
UniProt ID: [Q8C6P8](#)

Cytogenetics: 17

MW: 48.1 kDa

Gene Summary: Transcription regulator required to maintain maternal and paternal gene imprinting, a process by which gene expression is restricted in a parent of origin-specific manner by epigenetic modification of genomic DNA and chromatin, including DNA methylation. Acts by controlling DNA methylation during the earliest multicellular stages of development at multiple imprinting control regions. Required for the establishment of maternal methylation imprints at SNRPN locus. Acts as a transcriptional repressor in Schwann cells. Binds to a 5'-TGCCGC-3' consensus sequence and recognizes the methylated CpG within this element. [UniProtKB/Swiss-Prot Function]

Product images:



Circular map for MR221917