

Product datasheet for **MR221903**

Lemd3 (NM_001081193) Mouse Tagged ORF Clone

Product data:

Product Type:	Expression Plasmids
Product Name:	Lemd3 (NM_001081193) Mouse Tagged ORF Clone
Tag:	Myc-DDK
Symbol:	Lemd3
Synonyms:	AI316861; Man1
Mammalian Cell Selection:	Neomycin
Vector:	pCMV6-Entry (PS100001)
E. coli Selection:	Kanamycin (25 ug/mL)



[View online »](#)

Protein Sequence: >MR221903 representing NM_001081193
 Red=Cloning site Green=Tags(s)

MAAATAAAPQQLSDEELFSQLRRYGLSPGPVTESTRPVYLKLLKLLREEEQQQQQQQQQHRAGGRGN
 KTRNSNNNTATAMGRRPGSGDLAYLRSPAGLGRLSASAAESPVAGSGGAAVPAAGSKVLLGFSSDES
 DVEASPREQAGGGARRDRAALQYRGLRAPPAPPAAGEVTGGHPGERRKPHSWWGARRPAGPEPQPPAAG
 SDGAAEDADEELADGEDRDPEAEPLWASRTVNGSRLLPYSSCREHYSDSEEEEEEEGEDGDVAPARQVL
 KDDSLARHRPRRSHSKPFSALTAKSGGSRQETSVOGGGALAMNDRAAAAAGSLDRSRNLEAAAEPGGGG
 GGCDCDPVDSIPRYRAGAKKLAPLLSPPSPDGDSTLESPTGPLLKTNNHIGGAFVGDSPGLYANSLPPG
 ATAAAAPGTLRINHANHTGSNHTYLKTYGKPKLCEPEEELLQQFKREEVSPTGSFSAHYLSMFLATAAC
 LFFLILGLTYLGMRTGVPEDGGLIKNPFDETFGKIQESEKNLLMSTLYKLHDRLAQIAGDHECGSSQR
 MLSVQEAAYLKNLGPYEDVFNLSLLWIFKNGKDVGIRCVGYGPEEDLTNITDVQFLQSTRPQMPFWCR
 FRRAFITVTHRLLLLCLGVVLCVALRYMRYRWTKEEEETRQMYDMVVKIIDVLRSHNEACQETKDLQPY
 MPLPHVRDSLIPQDRKKMKKVWDRAVDFLAANESRVRTETRRVGGADFLVWRWIQPSASCDKTLVIPSK
 VWQGFHLDLRRNSPPNSLTPCLKIRNMFDPVMEIGDHWHLAIQEAILEKCSNDNDGIVHIAVDRNSREGC
 VYVKCLSPYAGKAFKALHGSWFDGKLVTVKYLRLDRYHHRFPQALTCNTPLKPAKHMNSLSHLRLRTG
 LANSQGS

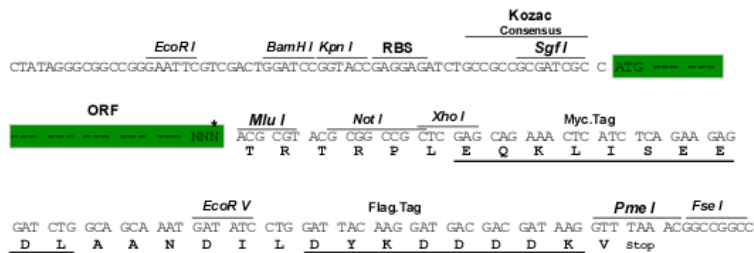
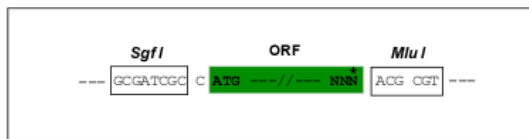
TRTRPLEQKLISEEDLAANDILDYKDDDDKV

Chromatograms: https://cdn.origene.com/chromatograms/mm9003_b06.zip

Restriction Sites: SgfI-MluI

Cloning Scheme:

Cloning sites used for ORF Shuttling:



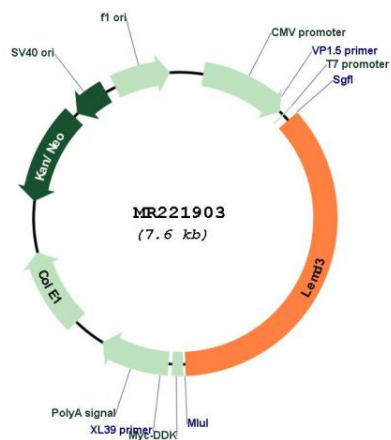
* The last codon before the Stop codon of the ORF

ACCN: NM_001081193

ORF Size: 2754 bp

OTI Disclaimer:	The molecular sequence of this clone aligns with the gene accession number as a point of reference only. However, individual transcript sequences of the same gene can differ through naturally occurring variations (e.g. polymorphisms), each with its own valid existence. This clone is substantially in agreement with the reference, but a complete review of all prevailing variants is recommended prior to use. More info
OTI Annotation:	This clone was engineered to express the complete ORF with an expression tag. Expression varies depending on the nature of the gene.
Components:	The ORF clone is ion-exchange column purified and shipped in a 2D barcoded Matrix tube containing 10ug of transfection-ready, dried plasmid DNA (reconstitute with 100 ul of water).
Reconstitution Method:	<ol style="list-style-type: none">1. Centrifuge at 5,000xg for 5min.2. Carefully open the tube and add 100ul of sterile water to dissolve the DNA.3. Close the tube and incubate for 10 minutes at room temperature.4. Briefly vortex the tube and then do a quick spin (less than 5000xg) to concentrate the liquid at the bottom.5. Store the suspended plasmid at -20°C. The DNA is stable for at least one year from date of shipping when stored at -20°C.
RefSeq:	NM_001081193.2 , NP_001074662.2
RefSeq Size:	4754 bp
RefSeq ORF:	2757 bp
Locus ID:	380664
UniProt ID:	Q9WU40
Cytogenetics:	10 D2
MW:	100.6 kDa
Gene Summary:	Can function as a specific repressor of TGF-beta, activin, and BMP signaling through its interaction with the R-SMAD proteins. Antagonizes TGF-beta-induced cell proliferation arrest (By similarity).[UniProtKB/Swiss-Prot Function]

Product images:



Circular map for MR221903