

Product datasheet for MR221851

Erbin (NM_001005868) Mouse Tagged ORF Clone

Product data:

Product Type:	Expression Plasmids
Product Name:	Erbin (NM_001005868) Mouse Tagged ORF Clone
Tag:	Myc-DDK
Symbol:	Erbin
Synonyms:	1700028E05Rik; Erbb2ip; mKIAA1225
Mammalian Cell Selection:	Neomycin
Vector:	pCMV6-Entry (PS100001)
E. coli Selection:	Kanamycin (25 ug/mL)
ORF Nucleotide Sequence:	>MR221851 ORF sequence Red=Cloning site Blue=ORF Green=Tags(s)

TTTTGTAATACGACTCACTATAGGGCGGCCGGAATTCGTCGACTGGATCCGGTACCGAGGAGATCTGCC
GCCCGATCGCC

ATGACTACAAAACGAAGTTTGTGGTGGTACCATGTCGCTGTCTACGAGGAGAAGAGGAGACAG
TCACTACTCTAGATTATTCTCATTGCAGCTTGGAAACAAGTTCCCAAAGAGATTTTCACCTTTGAAAAAC
TTTAGAGGAGCTCTATTTAGATGCTAATCAGATTGAAGAGCTTCCAAAGCACTTTTAAATTGTCAGTCT
CTACATAAACTAAGTTTCCAGACAATGATTTAAACAACATTACCAGCCTCCATTGCAAACTTTATTAATC
TCAGGGAAGTGGATGTCAGCAAAAATGGAATACAAGAATTTCCAGAAAATATTAATAAATTGTAAAGTTT
GACAATTTGGAGGCTAGTGTGAACCTATTTCTAAGCTCCCTGATGGGTTTTCTCAGCTGCTAAACCTA
ACCCAGTTATATCTGAATGATGCTTTCTTGAATTTCTACCAGCTAATTTTGGCAGATTAACCTAACTCC
AGATTCTAGAAGTCTAGAGAAAACAGTTGAAAATGTTGCCTAAAACCATGAATAGACTGACCCAGCTGGA
AAGGCTGGATTTGGGAAGTAATGAATTCACAGAAGTGCCTGAAGTACTTGAACAACCTAAGTGGATTGAGA
GAGTTTGGATGGATGGCAATAGACTGACTTTTATCCAGGGTTTATTGGTAGTTTGGAGACAGCTCACGT
ACTTGGATGTTTCTAAAAATAATTTGAAATGGTTGAAGAAGGAATTTCAACATGTGAAAACCTCCAGGA
CTTTCTCTATCAAGTAATCCCTTCAGCAGCTGCCGAAAATTTGGTTCATTGAAAAATGTCACAAC
CTAAAAATTTGATGAAAACCAATTAATGTATCTACCAGACTCAATAGGAGGTTAAGTCAATAGAAGAAC
TGGATTGCAGTTTCAATGAAATGAAAGCTTTGCCTTCTCAATTGGCCAGCTCACAAACATGAGAACATT
TGCTGCAGATCACAATTACTTACAACAGCTACCCCCAGAGATTGAAAACCTGGAAAAATATAACTGTGCTG
TTTCTCCATTGAATAAACTAGAGACGCTTCCAGAGGAAATGGGTGATATGCAAAAATTAAGTGCATCA
ATTTAAGTGATAATAGGTTAAAGAATTTGCCTTTAGCTTTACAAAGCTACAACAGTTGACTGCTATGTG
GCTGTCAGATAATCAGTCCAAACCTCTGATACCTCTTCAAAAAGAAAACAGACACAGAGACTCAGAAAATG
GTGCTTACTAATTACATGTTCCCTCAGCAGCCACGGACTGAAGACGTTATGTTTCATATCAGATAATGAA
GTTTTAATCCTGCATTGTGGGAAGAACAGAAAAACAGCGGGCTCAAGTGGCATTGAAATGTGATGAAGA
CAAAGATGAAAGAGAGGCCACCACCCAGGAGGAAAATTAAGAGATATCCAACCCATACCCAGATGAG



[View online »](#)

CTTAAGAATATGGTCAAGACTGTTCAAACCATTGTACATAGATTAAGATGAAGAGACTAATGAAGAGT
CTGGGAGAGATTTGAAGCAGCATGAAGATCAGCAAGTTGTAATAAGGATAAGTGTGTGAAGACTTCAGA
AAGTACTACAACAAAAGCAAACCTTGATGAAAGAGAAAAGTATATGAATTCTGTACAGAAAATGAGTGAG
CCTGAAGCTGAGACCAATGGTGGAAATTTGCCAGTAACTGCAAGTATGAAGTTGTCTGGAACCTGAAGC
ATATTGTTAACCATGATGATGTTTTGAGGAATCTGAAGAACTTCTTCTGATGAAGAAAATGAAAATGGC
AGAGATGCGACCTCCATTAATTGAATCCTCGATTAATCAGCCAAAGTTGTAGCACTTAGTAATAATAAA
AAGGATGATCGAAGGATGCAGACTCTTATCCGATGAAGTACACACAACAGTAATCAGAATAACAGCA
ACTGTTCTTCTCCGTCCCGAATGTCTGATTCAGTGTCTCTTAATACTGACAGCAGTCAAGACACGCTCA
CTGTTCTCCCGTGAACAGACTCCCGTGGATAGTAACTCAAAGTCAGACAAGAAGATGAAAATTTTAAAC
AGCCTTTTACAAAATGGAGTTAATTTAAACAATTCACCAGAGGAAAAATCAAATTAATGATAAAAAGG
ATTTTAAGTTACCTGAGTATGATTTGAATTTGAAGAACAGTTAGTTCTGATTGAAAAAGACATTGATTC
AAAAGCCACATCTGATGACTCTCGCCAGTTAGACCATATCAACATGAATATTAATAAACTGTGACCAAT
AATATTTTTCAACCAGAAGTAATGGAAAGATCAAAGATGCAGGATATAGTACTTGAACAGGCTTTTTAA
GTATTCATCCTAAAATGAGGCTGAGCACATAGAAAATGGGGCTAAGTTCCGAATTTGGAGTCCATAAA
TAAGGTAATGGTCTTTGTGAGGACACTGCACCGTCTCCTGGTAGGGTTGAACCACAGAAGGCCAGTTCT
TCTGCTGACGTGGGCATTTCTAAAAGCAGCGAAGATCTATCTCCTCAGAGAAGTGGTCCAACCTGGAGCTG
TTGTGAAATCTCATAGTATAACTAACATGGAGACTGGAGGTTAAAAATCTATGACATTCTTGGTGTGA
TGGCCCTCAGCCGCAAGTGCAGCAGTAAAATCGCATCTGCTGTGGATGGGAAGAACATAGTCAGAAGC
AAGTCTGCCACACTGCTGTATGATCAGCCCTGCAGGTGTTCACTGCTGCCTCCTCATCTTCTGAGTTAC
TGTCAGGTACAAAGGCAGTTTTCAAGTTGATTCAAATCACACCCTGAAGAGCCAGATATAATAAGAGC
TGCCACAGTATCTGGCCACAGTCTACACCTCACCTGTATGGTCCCCACAATATAATGTCCAGTACAGT
GGCAGTCTACAGTGAAGACACCTTGTGGCACCTAACAGAATCCACAATAGATCCTGTGAGTTTTTC
CTCCTCAGCGCCTTCAAGATCTGAGAGTGCAGAAAATCACAGTTATGCAAAGCATTCTGCCAACATGAA
TTTTCTTAACCATAACAATGTTAGAGCCAATACTGGATACCACTTACAACAGAGACTTGGCCAGCCAGG
CATGGAGAAATGTGGGCTATCTCCCGAATGACCGACTAGTGCCAGCAGTCACTCGGACTACTATTCAGA
GACAGAGTAGCGTGTCTTCAACGGCTTCTGTAATCTCGGTGACCCACAAAGGCGTACTGAAGGAGATTA
CTTATCGTACAGAGATTACATTCAATGGGAAGAACTCCAGTCATGTCAGGATCAGAGAGACCTCTTTCT
GCACGAGCGTACAGCATCGATGGCCAAATACATCCAGGCCTCAGAGTGGCCGCTCCTCTATTAATGAAA
TACCAGAGAGAACTATGTCAGTTAGTGATTTCAATTACTCACGGACTAGTCTTCAAAAAGACCAATAC
AAGGGTCGGGTCTGAACATTCTCTGTTAGATCCTCCAGGAAAAAGCAAGGTTCTCATGACTGGCGGGAA
CAAGTACTACGACACATTGAGGCCAAAAGTTAGAAAAGAGTATGCTGTCAAGGTCCTTTAATCCAATC
TTACTGCTGTAAGCAGTTCTCACTATGGCAGCTTAGGGATCTGCATGGCAGCCAGGGCAGCCTTGCCT
GAGTGTTCGACAGCGAAGAGGTTCTGGTGGGCACATTTTTCGACATCCGACAGACATCCAGTCCAGGAGAG
TGTGCAAGATGATAGATTCAATGTCAGAAAGAGCAGAACCACCCATCAGGTGCACCTAGTCACAGAGGTC
TTCCAGACAGCCTGATGAAAATGCCTTTGAGTAATGGACAAATGGGCCAGCCTCTCAGGCCTCAGGCACA
TTATAGTCAAACCCATCACCCCTCAGGCATCTGTGGCAAGGCATCCCTCTAGAGAACAATAATTGAT
TATTTGATGCTGAAAGTGGCCACCAGCCTCCATATACACATCCCATTGTTCTCCTAGACAAGGCCATG
AACTGGCAAAGCAAGAGATTCGAGTAAGAGTAGAAAAGGATCCAGAACTGGATTAGCATATCAGGAGG
TGTCGGCGGCAGAGGAAACCTTTTCAGACCTGATGATGATGGTATATTTGTAACAAGGGTACAACCTGAA
GGACCAGCATAAAATTACTACAGCCAGGAGATAAAATTTTTCAGGCTAATGGCTACAGTTTTATCAACA
TTGAACATGGCAAGCGGTGCTTGTAAAAACTTTCCATAATGCAGTAGATCTCATCATTGTACGAGA
AGTTTCTCA

ACGCGTACGCGGCCGCTCGAGCAGAACTCATCTCAGAAGAGGATCTGGCAGCAAATGATATCCTGGATT
ACAAGGATGACGACGATAAGGTTTAA

Protein Sequence:

>MR221851 protein sequence
 Red=Cloning site Green=Tags(s)

```

MTTKRSLFVRLVPCRCLRGEETVTTLDYSHCSLEQVPKEIFFEKTLEELYLDANQIEELPKQLFNCQS
LHKLSPDNDLTTLPASIANLINLRELDVSKNGIQEFPENIKNCKVLTIVEASVNPISKLPDGFSQLNL
TQLYLNDAFLEFLPANFGRITKLQILELRENQLKMLPKTMNRLTQLERLDLGSNEFTEVPEVLEQLSGLR
EFWMDGNRLTFIPGFIGSLRQLTYLDVSKNNIEMVEEGISTCENLQDFLLSSNSLQQLPETIGSLKNVTT
LKIDENQLMYLPDSIGGLRSIEELDCSFNEIEALPSSIGQLTNMRTFAADHNYLQQLPPEIGNWKNIIVL
FLHCNKLETLPEEMGDMQKLKVINLSDNRLKNLPSFTKLQQLTAMWLSDNQSKPLIPLQKETDTETQKM
VLTNYMFPQQPRTEDVMFISDNESFNPALWEEQRKQRAQVAFECDEKDEREAPPREGNLKRYPTYPDE
LKNMVKTVQTIHRLKDEETNEESGRDLKQHEDQQVVKDKCVKTSSTTTKSKLDEREKYMNSVQKMS
PEAETNGGNLPTASMKLSGNLKHIVNHDDVFESEELSSDEEMKMAEMRPPLIESSINQPKVVALSNNK
KDDAKDADSLSDEVTHNSNQNSNCSSPSRMSDSVSLNTDSSQDTSLSQSPVKQTPVDSNSKVRQEDENFN
SLLQNGVNLNNSPEEKFKINDKKDFKLEPYDLNIEEQVLIEKDIDSKATSDDSRQLDHINMNINKLVTN
NIFQPEVMERSKMQDIVLGTGFLSIHPKNEAEHIENGAKFPNLESINKVNGLCEDTAPSPGRVPEQKASS
SADVGISKSTEDLSPQRSPTGAVVKSHSITNMTGGLKIYDILGDDGPPSAAVKIASAVDGKNIIVRS
KSATLLYDQPLQVFTAASSSSELLSGTKAVFKFDSNHNPEEPDIIRAATVSGPQSTPHLYGPPQYVQYS
GSATVKDTLWHPKQNPQIDPVSFPPQRLPRSESAENHSYAKHSANMFSNHNNVRANTGYHLQQLAPAR
HGEMWAI SPNDRLVPAVTRTTIQRQSSVSTASVNLGDPTRRTEGDYLSYRELHSMGRTPVMGSGRPLS
ARAYSIDGPNTSRPQSARPSINEIPERTMSVDFNYSRTSPSKRPNTRVGEHSLLDPPGKSKVPHDWRE
QVLRHIEAKKLEKSMLSRSFNSNLTAVSSSHYGSSRDHLHGSQGLALSVADGRGSGGHI FRHPQTSSPGE
CCQDDRFMSEEQNHPSGALSHRGLPDSLMMKPLSNGQMGQPLRPQAHYSQTHPPQASVARHPSREQLID
YLMLKVAHQPPYTHPHCSPRQGHAKQEIRVRVEKDPELGFISGGVGGRGNPF RPDDDGIFVTRVQPE
GPASKLLQPGDKIIQANGYSFINIEHGQAVSLLKTFHNAVDLIIIVREVSS
  
```

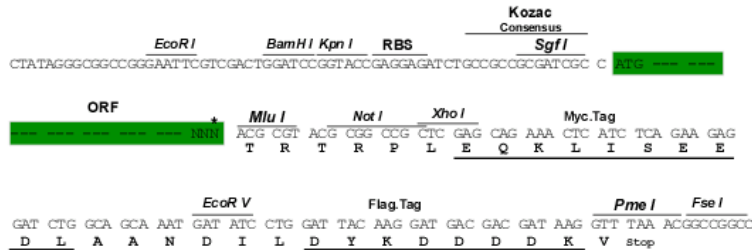
TRTRPLEQKLISEEDLAANDILDYKDDDDKV

Restriction Sites:

SgfI-MluI

Cloning Scheme:

Cloning sites used for ORF Shuttling:



* The last codon before the Stop codon of the ORF

ACCN:

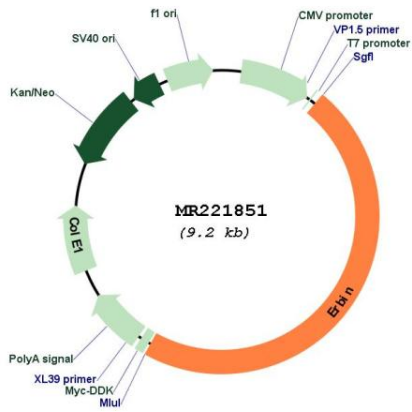
NM_001005868

ORF Size:

4353 bp

OTI Disclaimer:	The molecular sequence of this clone aligns with the gene accession number as a point of reference only. However, individual transcript sequences of the same gene can differ through naturally occurring variations (e.g. polymorphisms), each with its own valid existence. This clone is substantially in agreement with the reference, but a complete review of all prevailing variants is recommended prior to use. More info
OTI Annotation:	This clone was engineered to express the complete ORF with an expression tag. Expression varies depending on the nature of the gene.
Components:	The ORF clone is ion-exchange column purified and shipped in a 2D barcoded Matrix tube containing 10ug of transfection-ready, dried plasmid DNA (reconstitute with 100 ul of water).
Reconstitution Method:	<ol style="list-style-type: none">1. Centrifuge at 5,000xg for 5min.2. Carefully open the tube and add 100ul of sterile water to dissolve the DNA.3. Close the tube and incubate for 10 minutes at room temperature.4. Briefly vortex the tube and then do a quick spin (less than 5000xg) to concentrate the liquid at the bottom.5. Store the suspended plasmid at -20°C. The DNA is stable for at least one year from date of shipping when stored at -20°C.
RefSeq:	NM_001005868.2 , NP_001005868.1
RefSeq Size:	6674 bp
RefSeq ORF:	4353 bp
Locus ID:	59079
UniProt ID:	Q80TH2
Cytogenetics:	13 D1
MW:	162.2 kDa
Gene Summary:	Acts as an adapter for the receptor ERBB2, in epithelia. By binding the unphosphorylated ERBB2 'Tyr-1248' receptor, it may contribute to stabilize this unphosphorylated state (By similarity). Inhibits NOD2-dependent NF-kappa-B signaling and proinflammatory cytokine secretion (PubMed:16203728).[UniProtKB/Swiss-Prot Function]

Product images:



Circular map for MR221851