

## Product datasheet for **MR221839**

### Prpf40a (NM\_018785) Mouse Tagged ORF Clone

#### Product data:

Product Type:	Expression Plasmids
Product Name:	Prpf40a (NM_018785) Mouse Tagged ORF Clone
Tag:	Myc-DDK
Symbol:	Prpf40a
Synonyms:	2810012K09Rik; FBP-11; FBP11; Fnbp3; Fnbp11
Mammalian Cell Selection:	Neomycin
Vector:	pCMV6-Entry (PS100001)
E. coli Selection:	Kanamycin (25 ug/mL)



[View online »](#)

ORF Nucleotide  
Sequence:

>MR221839 representing NM\_018785  
 Red=Cloning site Blue=ORF Green=Tags(s)

TTTTGTAATACGACTCACTATAGGGCGGCCGGGAATTCGTGACTGGATCCGGTACCGAGGAGATCTGCC  
 GCC**CGCATCGCC**

ATGAGGCCGGGACTGGAGCCGAGCGTGGAGGCCCTCATGGTGAAGTAAATGGAGAGCCAACCTCCCTCGC  
 GGGTCCCGGGGACGGGAGCGGAGATTGTCCGGCTCAAACCTGTGCTCCAGTTCCTGGGTCTCTGCTGA  
 CGGCTTCCTGAGGAGACGGCCCTCGATGGGCATCCTGGCATGCATTATGCACCAATGGGCATGCACCTT  
 ATGGGTGACAGAGCAAACATGCCTCCTGTACCTCATGGAATGATGCCACAGATGATGCCCCCTATGGGAG  
 GGCCTCCAATGGGACAAATGCCTGGAATGATGTCTTCAAGTAAATGTCAGGAATGATGATGTCTCATATGTC  
 TCAGGCTTCCATGCAACCTGCCTTACCGCTGGAGTAAATAGTATGGATGTAGCAGCAGGTGCAGCATCT  
 GGTGCAAAATCAATGTGGACAGAACATAAATCACCTGATGGAAGGACTTATTATTACAATACTGAAACAA  
 AACAGTCTACCTGGGAAAAGCCAGATGATCTTAAACACCTGCTGAGCAACTATTGTCTAAATGCCCATG  
 GAAAGAGTACAAATCTGATTCGGGAAGCCTTATTACTATAATTCTCAAACAAAGGAGTCCCGCTGGGCC  
 AAACCTAAGGAACTTGAAGATCTTGAAGGATACCAAGAATACCATTGTTGCTGGAGGTCTTATTACAAAT  
 CAAACCTGCATGCCATGATCAAAGCTGAAGAAAGCAGCAAGCAAGAAGAATGACTACAGCATCAACAGC  
 CCCAGTTCCTACAACAGAAATTCCTACCACTATGAGCACCATGGCTGCTGCAGAAGCAGCGGCTGCTGTT  
 GTTGACAGTGTGACAGTGTGACGACGAGCTAATGCCAATACTTCCACCACACCTACTAATACTGTGG  
 GAAGTGTTCAGTTGCTCCTGAACCTGAGGTTACTTCCATTGTTGCTACTGCTGTAGATAATGAAAAATC  
 AGTAACTGTATCAACTGAAGAGCAAGCAGCTTGCTAATACCACAGCTATTCAAGATCTCAGTGGTGAT  
 ATATCCAGTAACACTGGAGAGAAACCAGCTAAACAAGAACTGTCTCCGATTTTACTCCTAAAAAAGAAG  
 AGAAGAGAGCCAAACAGCAAAAAAACATATACTTGAATACAAGAGGAGGCAAGCAAGCAAGCAAGCAAG  
 AGAATTATTGAAAGAAAAGCGGGTGCCTCCAATGCTTTCATGGGAGCAGGCTATGAAAATGATCATAAAT  
 GATCCTCGGTACAGTGTCTTAGCAAAGCTGAGTGAAGAAAAGCAGGCCTTAAATGCCTATAAAGTCCAGA  
 CGGAGAAAAGGAAAAGAAGAAGCAAGATCAAATACAAGAAGCTAAGGAATCTTTTCAGCGTTTTCT  
 TGAAAAATCATGAGAAAATGACTTCCACAACCAGATACAAAAAGCTGAGCAAAATGTTTGGGAGATGGAA  
 GTTTGGAATGCAATTTCCAGAGCGTGATCGTCTAGAAATCTATGAAGATGTTTTGTTCTTCTTTCAAAGA  
 AAGAAAAGGAACAAGCAAAGCAGCTACGAAAGAGAAATGGGAAGCCTTAAAAACATACTTGACAATAT  
 GGCTAACGTTACATACTCTACCCTTGGTCTGAAGCCCAGCAGTATCTGATGGATAATCCAACGTTCCGA  
 GAGGATGAAGAGTTACAGAACATGGATAAAGAAGATGCATTAATATGCTTTGAGGAACACATCCGGGCTT  
 TAGAAAAGGAAGAAGAAGAAGAAAACAGAAAGACTTTGTTGAGAGAAAAGGAGGAGGCAGCGTAAAAATAG  
 GGAATCTTTTCAGATCTTTCTGGACGAGTTGCACGAGCATGGGCAGCTGCACTCTATGTCCTCTTGATG  
 GAGCTGTATCCCACCATCAGCTCTGACATTCGCTTCACTAACATGCTGGGTGAGCCGGGATCAACTGCAC  
 TTGATCTTTTCAAGTTTTATGTTGAAGATCTTAAAGCAGGATATCATGATGAAAAGAAGATAATAAAGA  
 CATTCTGAAGGATAAAGGATTTGATGTTGAAGTAAACACTACTTTTGAAGATTTTGTGGCAATAATCAGT  
 TCAACCAAAGATCAACTACTTTGGATGCTGGAATATCAAGTTGGCTTTCAATAGTTTACTAGAAAAGG  
 CAGAAGCCCGTGAACGTGAGAGAGAAAAAGAAGAGGCTCGGAAAATGAAACGAAAAGAGCTGCCTTTAA  
 GAGTATGTTGAAACAGGCTACCCCTCCAATAGAAGTGGATGCTGTCTGGGAAGATATCCGGGAAAGATTT  
 GTAAAGGAACCGGTTTGAAGATATAACTCTAGAATCTGAAAGAAAAGAATATTTAAAGATTTTCATGC  
 ATGTGCTTGAGCATGAATGTCAGCATCATCATTCAAAGAACAAGAAACATTCTAAGAAATCTAAAAAGCA  
 CCATAGGAAAAGCTCCCGCTCTCGATCGGGATCAGAGTCAGATGATGACGACAGCCATTCAAAGAAAAAA  
 AGGCAGCGATCAGAGTCTCATTCTGCTTCAAGAGCGTTCGTCAGTGTGAGTCTGAGAGAAGTTACAAGA  
 AGTCAAAAAAGCATAAGAAGAAAAGCAAAAAAGAGGAGGCATAAATCTGACTCTCCAGAATCAGATACTGA  
 ACGAGAAAAGGATAAAAAAGAAAAGACTCGGGACAGTAAAAAGACAGAAGTAGACAGAGATCAGAAATCA  
 AAACACAAATCACCTAAGAAAAGACTGGAAAGGATTCTGGTAACTGGGATACTTCTGGCAGTGAAGTGA  
 GTGAAGGGGAATTGAAAAGCGCAGAAGAACCCTTTTGGAGCAACTGGATGATGATCAA

**ACGCGT**ACGCGGCCGCTCGAGCAGAACTCATCTCAGAAGAGGATCTGGCAGCAAATGATATCCTGGATT  
 ACAAGGATGACGACGATAAGGTTTAA

Protein Sequence: >MR221839 representing NM\_018785  
 Red=Cloning site Green=Tags(s)

MRPGTGAERGGLMVSEMSQPPSRGPGDGERRLSGSNLCSSSWVSADGFLRRRPSMGHPGMHYAPMGMPH  
 MGQRANMPPVPHGMMPQMPPMGGPPMGQMPGMMSSVMMSGMMSHMSQASMPALPPGVNSMDVAAGAAS  
 GAKSMWTEHKSPDGRTYYYNTEKQSTWEKDDLKTPAEQLLSKCPWKEYKSDSGKPYYYNSQTKESRWA  
 KPKELEDLEGYQNTIVAGGLITKSNLHAMIKAEESKQEECTTASTAPVPTTEIPTMSTMAAAEAAA  
 VAAAAAAAAAANANTSTPTNTVGSVPVAPEPEVTSIVATAVDNENTVTVSTEEQQLANTTAIQDLSGD  
 ISSNTGEEPAKQETVSDFTPKKEEESQPAKTYTWNTKEEAKQAFKELLKEKRVPSNASWEQAMKMIIN  
 DPRYSALAKLSEKKQAFNAYKVQTEKEEKEEARSKYKEAKESFQRFLENHEKMTSTTRYKAEQMFEME  
 VWNAISEDRLEIYEDVLFLLSKKEKEQAKQLRKRNWEALKNILDNMANVTYSTTWEAQYLMDNPTFA  
 EDEELQNMDKEDALICFEEHIRALEKEEEEEKQKTLRERRRQRKNRESFQIFLDELHEHGQLHSMSSWM  
 ELYPTISSDIRFTNMLGQPGSTALDLFKFYVEDLKARYHDEKKIKDILKDKGFVVEVNTTFEDFVAIIS  
 STKRSTLDAGNIKLAFNSLLEKAEAREREREKEEARKMKRKESAFKSMKQATPPIELDAVWEDIRERF  
 VKEPAFEDITLESERKRIFKDFMHVLEHECQHHSKNNKHSKSKKHKHRKRSRSRSGSESDDDSHSKKK  
 RQRSEHSASERSSAESERSYKSKKHKKSKKRRHKSDSPESDTEREKDKKEDRDSEKDRSRQRSES  
 KHKSPKKTGKDSGNWDTSGSELSEGELEKRRRTLLEQLDDDDQ

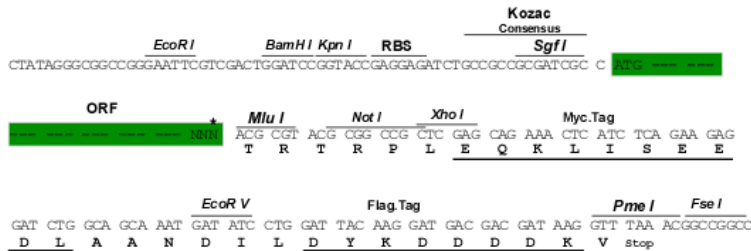
TRTRPLEQKLISEEDLAANDILDYKDDDDKV

Chromatograms: [https://cdn.origene.com/chromatograms/mm9095\\_e10.zip](https://cdn.origene.com/chromatograms/mm9095_e10.zip)

Restriction Sites: SgfI-MluI

Cloning Scheme:

Cloning sites used for ORF Shuttling:



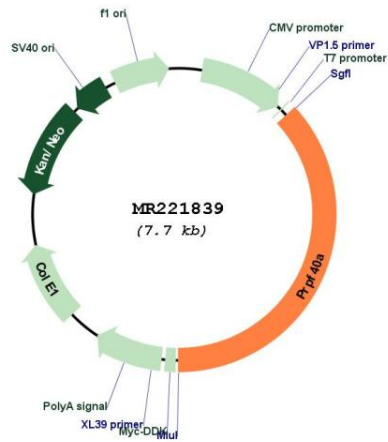
\* The last codon before the Stop codon of the ORF

ACCN: NM\_018785

ORF Size: 2859 bp

<b>OTI Disclaimer:</b>	The molecular sequence of this clone aligns with the gene accession number as a point of reference only. However, individual transcript sequences of the same gene can differ through naturally occurring variations (e.g. polymorphisms), each with its own valid existence. This clone is substantially in agreement with the reference, but a complete review of all prevailing variants is recommended prior to use. <a href="#">More info</a>
<b>OTI Annotation:</b>	This clone was engineered to express the complete ORF with an expression tag. Expression varies depending on the nature of the gene.
<b>Components:</b>	The ORF clone is ion-exchange column purified and shipped in a 2D barcoded Matrix tube containing 10ug of transfection-ready, dried plasmid DNA (reconstitute with 100 ul of water).
<b>Reconstitution Method:</b>	<ol style="list-style-type: none"><li>1. Centrifuge at 5,000xg for 5min.</li><li>2. Carefully open the tube and add 100ul of sterile water to dissolve the DNA.</li><li>3. Close the tube and incubate for 10 minutes at room temperature.</li><li>4. Briefly vortex the tube and then do a quick spin (less than 5000xg) to concentrate the liquid at the bottom.</li><li>5. Store the suspended plasmid at -20°C. The DNA is stable for at least one year from date of shipping when stored at -20°C.</li></ol>
<b>RefSeq:</b>	<a href="#">NM_018785.2</a> , <a href="#">NP_061255.1</a>
<b>RefSeq Size:</b>	3565 bp
<b>RefSeq ORF:</b>	2862 bp
<b>Locus ID:</b>	56194
<b>UniProt ID:</b>	<a href="#">Q9R1C7</a>
<b>Cytogenetics:</b>	2 C1.1
<b>MW:</b>	108.5 kDa
<b>Gene Summary:</b>	Binds to WASL/N-WASP and suppresses its translocation from the nucleus to the cytoplasm, thereby inhibiting its cytoplasmic function. Plays a role in the regulation of cell morphology and cytoskeletal organization. Required in the control of cell shape and migration. May play a role in cytokinesis. May be involved in pre-mRNA splicing.[UniProtKB/Swiss-Prot Function]

Product images:



Circular map for MR221839