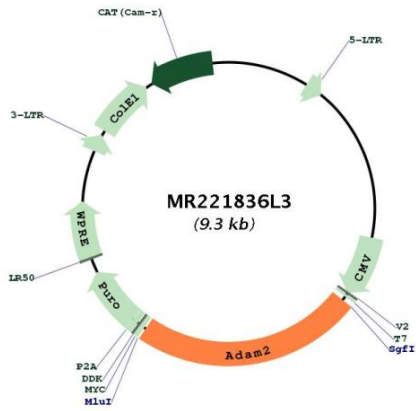


OTI Disclaimer:	The molecular sequence of this clone aligns with the gene accession number as a point of reference only. However, individual transcript sequences of the same gene can differ through naturally occurring variations (e.g. polymorphisms), each with its own valid existence. This clone is substantially in agreement with the reference, but a complete review of all prevailing variants is recommended prior to use. More info
OTI Annotation:	This clone was engineered to express the complete ORF with an expression tag. Expression varies depending on the nature of the gene.
Components:	The ORF clone is ion-exchange column purified and shipped in a 2D barcoded Matrix tube containing 10ug of transfection-ready, dried plasmid DNA (reconstitute with 100 ul of water).
Reconstitution Method:	<ol style="list-style-type: none">1. Centrifuge at 5,000xg for 5min.2. Carefully open the tube and add 100ul of sterile water to dissolve the DNA.3. Close the tube and incubate for 10 minutes at room temperature.4. Briefly vortex the tube and then do a quick spin (less than 5000xg) to concentrate the liquid at the bottom.5. Store the suspended plasmid at -20°C. The DNA is stable for at least one year from date of shipping when stored at -20°C.
RefSeq:	NM_009618.2 , NP_033748.2
RefSeq Size:	2551 bp
RefSeq ORF:	2208 bp
Locus ID:	11495
UniProt ID:	Q60718
Cytogenetics:	14 34.36 cM
Gene Summary:	This gene encodes a member of a disintegrin and metalloprotease (ADAM) family of endoproteases that play important roles in various biological processes including cell signaling, adhesion and migration. This gene is predominantly expressed in the epididymis, where the encoded preproprotein undergoes proteolytic processing to generate a mature, functional protein. Male mice lacking the encoded protein are infertile and exhibit multiple defects in reproduction. [provided by RefSeq, May 2016]

Product images:



Circular map for MR221836L3