

Product datasheet for **MR221792**

Ptprr (NM_011217) Mouse Tagged ORF Clone

Product data:

Product Type:	Expression Plasmids
Product Name:	Ptprr (NM_011217) Mouse Tagged ORF Clone
Tag:	Myc-DDK
Symbol:	Ptprr
Synonyms:	Gmcp1; mPTP213; PTP-SL; PTPBR7; RPTPRR
Mammalian Cell Selection:	Neomycin
Vector:	pCMV6-Entry (PS100001)
E. coli Selection:	Kanamycin (25 ug/mL)



[View online »](#)

ORF Nucleotide
Sequence:

>MR221792 representing NM_011217
 Red=Cloning site Blue=ORF Green=Tags(s)

TTTTGTAATACGACTCACTATAGGGCGGCCGGGAATTCGTCGACTGGATCCGGTACCGAGGAGATCTGCC
 GCC**CGGATCGCC**

ATGAGGAGAGCGGTCCGCTTCCCTGCGCTGTGCCTGCTTCTTAATCTTCATGCTGCAGGTTGTTTTCCA
 GAAACAATGATCACTTTTTGGCTATTCGTCAAAAGAAGAGTTGGAAGCCGGTGTTCAATTTATGACCATT
 ACAGGATATCAAGAAGAGCCTGGACATCGCACAAAGAGGCATACAAACATAACTACCACTCCCTTCCGAA
 GTTCAAATAAGCAAACATCACCAGATTATTAATTCAGCATTTCCTAGACCTGCATATGACCCGTCTCTTA
 ATCTGTTGGCTGAGTCTGATCAAGATCTTGAAATAGAAAATCTCCAATTCAGCAGCAAATGTGATTGT
 GGTGACACTGCAAATGGATATAACCAAGCTGAACATAACCCTGCTTCGGATCTTCCGCCAAGGAGTAGCT
 GCAGCCCTGGGACTCTTACCTCAGCAAGTGCACATTAACCGGCTCATTGAAAAGAAGAACCAGGTTGAGT
 TGTTTGTGTCTCCCGAAACCGAAACAGGAGAAACCGAGCCCTGCAGGCTGAGGAAGTCTGCGTTC
 CCTCAATGTGGATGGTTGCATCAGAGTTTACCACAGTTTGAATTACAGACGTCGCCCCGAGAAAAAT
 GTTTTACAAGGGCAGCACGAAGCAGACAAGATCTGGAGCAAAGAAGGATTTACGCTGTCGTCATCTTCC
 TCAGCATCTTTATCATATAGTAACCTGTTTGATGATTATTTACAGGTTAAAAGAAGGCTTCAGCTTTC
 CTTAAGACAAGATAAAGAGAAAAACCAGGAGATCCACCTATCACCATTCGACCGCAGCAAGCACAAATCG
 GAGGCCAAGACGACCCACAGCATGGTCCAGCCGATCAGGCGCCAAGGTGCTGAACGTGGTTGTGGACC
 CTCAAGGCCAATGCACCTCTGAGATTCGAAACAGCACCTCCACCTCTGTCTGCCCTTCTCCCTTCAGAA
 GAAGCCCATAGGACTCCAGGAGCGACGAGGTTCCAATGTATCTTACGCTGGACATGAGTAGCCTGGGC
 AGTGTGGAACCCTTTGTGGCCGTCTCAACCCCGGGAGAAGGTAGCCATGGAATACCTGCAGTCAGCCA
 GCCGAGTTCTCACACGGTCACAGCTGAGGGACGTCGTGGCAAGTCCCACCTACTTCAAAGTGAATTCAT
 GGAAATACCAATGAATTTTGTGGATCCCAAAGAAATTGATATTCCACGTCACGGAACAAAAATCGTTAT
 AAGACCATTTTGCCAAATCCCCTCAGCAGAGTGTGCTTAAGACCAAAAAATATAACCGATTCCCTTGAGTA
 CTTACATAAATGCTAACTATATTCGGGGCTACAGTGGTAAGGAGAAAGCCTTCATTGCCACCCAGGGCCC
 CATGATCAACACTGTGAATGACTTCTGGCAGATGGTGTGGCAAGAAGACAGTCCCGTGATTGTGATGATC
 ACGAAACTCAAAGAGAAAAATGAGAAATGTGTGCTCTACTGGCCAGAAAAGAGAGGGATTTACGGCAAGG
 TTGAGGTTCTGGTCACCGGTGTGACCGAATGTGATAACTACACCATCCGCAACCTCGTCTTAAAGCAAGG
 AAGTCACACCCAAACATGTGAAGCACTACTGGTACACTTCATGGCCGGATCATAAGACTCCAGACAGTGCC
 CAGCCCCCTCTGCAGCTCATGTTGGATGTGGAAGAAGACAGACTGGCCTCTGAAGGCCGAGGGCCTGTGG
 TTGTCCACTGCAGTGCAGGGATTGGGAGAACTGGGTGTTTCATCGCTACATCCATTGGCTGTCAACAATT
 GAAAGAAGAAGGAGTTGTAGACGCACTAAGTATTGTCTGCCAGCTTCGTGTAGACAGGGGTGGTATGGTC
 CAAACCAGCGAGCAGTATGAATTTGTGCACCATGCTCTGTGCCTGTTTCGAGAGCAGACTTTCACCAGAAA
 CTGTGCGAG

ACGCGTACGCGGGCCGCTCGAGCAGAAACTCATCTCAGAAGAGGATCTGGCAGCAAATGATATCCTGGATT
 ACAAGGATGACGACGATAAGGTTTAA

Protein Sequence: >MR221792 representing NM_011217
Red=Cloning site Green=Tags(s)

```
MRAVGFALCLLLNLHAAGCFSRNDHFLAIRQKKSWKPVFIYDHSQDIKSLDIAQEAYKHNYHSPSE
VQISKHHQIINSAFPRPAYDPSLNLLAESDQDLEIENLPAAANVIVVTLQMDITKLNITLLRIFRQGVA
AALGLLPQVHINRLIEKKNQVELFVSPGNRKPGETQALQAEVLRSLNVDGLHQSLPQFGITDVAPEKN
VLQSQHEADKIWSKEGFYAVVIFLSIFIIIVTCLMIIYRLKERLQLSLRQDKEKNQEIHLSPIARQQAQS
EAKTTHSMVQPDQAPKVLNVVVDPOGQCTPEIRNSTSTSVCPSPFRMKPIGLQERRGSNVSLTLDMSLGG
SVEPFVAVSTPREKVAMEYLQSASRVLTRSQRDQVAVSSHLQSEFMEIPMNFVDPKEIDIPRHGTKNRY
KTILPNPLSRVCLRPKNITDSLSTYINANYIRGYSKKEAFIATQGPMINTVNDVWQMVWQEDSPVIVMI
TKLKEKNEKCVLYWPEKRGYKVEVLVTGTECDNYTIRNLVLKQGSHTQHVKHYYWTSWPDHKTPTDSA
QPLLQLMLDVEEDRLASEGRPVVVHCSAGIGRTGCFIATSIGCQQLKEEGVVDALSIVCQLRVDRGGMV
QTSEQYEFVHHALCLFESRISPETVE
```

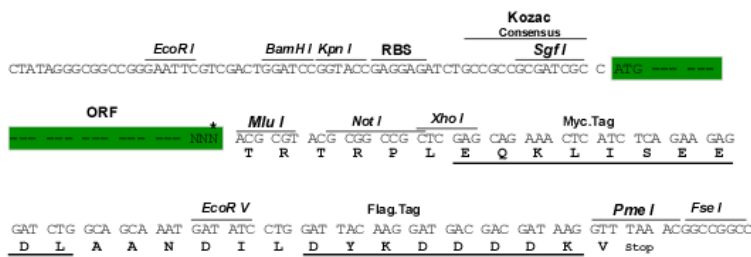
TRTRPLEQKLISEEDLAANDILDYKDDDDKV

Chromatograms: https://cdn.origene.com/chromatograms/mm9014_b03.zip

Restriction Sites: SgfI-MluI

Cloning Scheme:

Cloning sites used for ORF Shuttling:



* The last codon before the Stop codon of the ORF

ACCN: NM_011217

ORF Size: 1968 bp

OTI Disclaimer: The molecular sequence of this clone aligns with the gene accession number as a point of reference only. However, individual transcript sequences of the same gene can differ through naturally occurring variations (e.g. polymorphisms), each with its own valid existence. This clone is substantially in agreement with the reference, but a complete review of all prevailing variants is recommended prior to use. [More info](#)

OTI Annotation: This clone was engineered to express the complete ORF with an expression tag. Expression varies depending on the nature of the gene.

Components: The ORF clone is ion-exchange column purified and shipped in a 2D barcoded Matrix tube containing 10ug of transfection-ready, dried plasmid DNA (reconstitute with 100 ul of water).

Reconstitution Method:

1. Centrifuge at 5,000xg for 5min.
2. Carefully open the tube and add 100ul of sterile water to dissolve the DNA.
3. Close the tube and incubate for 10 minutes at room temperature.
4. Briefly vortex the tube and then do a quick spin (less than 5000xg) to concentrate the liquid at the bottom.
5. Store the suspended plasmid at -20°C. The DNA is stable for at least one year from date of shipping when stored at -20°C.

RefSeq: [NM_011217.2](#), [NP_035347.1](#)

RefSeq Size: 3466 bp

RefSeq ORF: 1971 bp

Locus ID: 19279

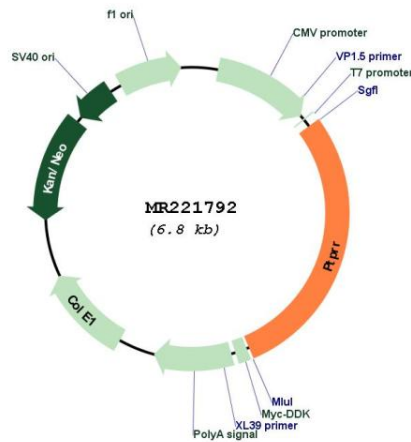
UniProt ID: [Q62132](#)

Cytogenetics: 10 D2

MW: 74.5 kDa

Gene Summary: Sequesters mitogen-activated protein kinases (MAPKs) such as MAPK1, MAPK3 and MAPK14 in the cytoplasm in an inactive form. The MAPKs bind to a dephosphorylated kinase interacting motif, phosphorylation of which by the protein kinase A complex releases the MAPKs for activation and translocation into the nucleus. Isoform gamma may have a role in patterning and cellular proliferation of skeletal elements in the precartilaginous/cartilaginous skeleton.[UniProtKB/Swiss-Prot Function]

Product images:



Circular map for MR221792