

Product datasheet for **MR221757**

Slfn10 (NM_181542) Mouse Tagged ORF Clone

Product data:

Product Type:	Expression Plasmids
Product Name:	Slfn10 (NM_181542) Mouse Tagged ORF Clone
Tag:	Myc-DDK
Symbol:	Slfn10
Synonyms:	mFLJ00257; Slfn10
Mammalian Cell Selection:	Neomycin
Vector:	pCMV6-Entry (PS100001)
E. coli Selection:	Kanamycin (25 ug/mL)



[View online »](#)

ORF Nucleotide
Sequence:

>MR221757 representing NM_181542
 Red=Cloning site Blue=ORF Green=Tags(s)

TTTTGTAATACGACTCACTATAGGGCGGCCGGGAATTCGTGACTGGATCCGGTACCGAGGAGATCTGCC
 GCC**CGGATCGCC**

ATGCAAACGACTAACAAGAGTGAGCATCCTGTGGAGATGGGACAGGATTTGGAAAAGCTTTGAGAGAGC
 TTATTATGTCCTTAATATGCAGGGTTTCTTTGAGACCAAGCAACAAGAGGACCAGTTCTACATTTTTGT
 TAAATCTTGGAGCTGCAGCCCTGAAGATGCTTCCACTAAGCCTCGAATTTGCAGCCTGGGCTCTTCCTG
 TACTGTAGATCTTTAACTTCTAACGTTGCCATGGATTCAAGGGAAGCATTGACTTTCTGAAGGGCAAGA
 AGAGATGTGTTAAGTGCAGTCTACTGATGACAGAGCCAATAAAATTCAGGAGCCATGTATCAGAACAG
 CCTTGAACAACAAATCCAGCTTTTGAATTTTCCAAAGTAAGAACTTGAATATGGCCAACACTTGCTTTTT
 TCTGAATCCACATTTATACAGTTTAAACAATTCTCTACCAACATGTCCAAGAATATATAAAAAACAAA
 TTCCAGAGTACATCTCCGATTTTCAAACACCCAGGGAGGCTATCTTTTCATTGGAGTGGATGATAAGAG
 TACCATCTGGGATGCCAAAAGACAACGTTGACCGTGACTCTTTGAAAAGTGTGGCAAAATGAAGCAATC
 TCCAAGTTGCCAGTTTTCCATTTTTGTTTCTAAAGACAAGGACAAGGTGTCTTATGAGACCAGAGTCA
 TAGATGTGTTTCAAGAGGGAAATTTGTATGGTTATCTCTGTGTGATCAAAGTAGAGCCTTTCTGCTGTGC
 AGTGTCTCAGAGGCTCCATTTTTCATGGATGGTAGACAAGGAGAAAGGTGTCTACAGACTGAACACCCGAG
 GAATGGGTACGCATGATGGTGGATGTTGGCCAGAGGCAGCTTCCAAAGATCTATCTAAAGATTTTGAAT
 GTCAGCTGAGTCTATCCAACAGCCCCACGCTGCAGACCAGTGTATTCTAAAAAGGGACTGGAATATAA
 AGTCGACCTGCAGCAGCATTTATTTCAAGTGTCAACAGACATTTAAAGTATACTCTGAATCTCTCTGG
 AGTGAGCTGTGTTTCGAGCATGAGAGACTAGAGGATTTAGTAAAGCAGCAAAATACGTTCTTTCTCTGTG
 GTTTGTGATCCTCTCTAGAAGCTGGGCTGTGGACCTGAACCTGGAAGAGAAGCAGGAATCATCTGTGA
 TGCTCTGCTGATTGCAGAGAATAGCCCCCATCTCTACACCATCCTTGGGGAGCAGGATGAGCAGGGT
 CAGGACTACTGCACCAGCACTGCCTTTACTCTGAAGCAGAAGCTGGTGAACACTGGTGGCTACACTGGGA
 GAGTGTGTGCATGACCAAAGTTCTCTGCCTGAGTTCTCAGAACAGTATTGAGACTAATGGGGGCTCAGT
 CTCTCCTATTGATTACCCACACTCCTATAACCTTGCAAACATCCAGGAAATGCAGGACTTGTGCAGGCC
 CTTGTGATTGTCTTGTCAACTTCAGATCTTTCTTGTAGCGACCAGCTTGGCTGTGAAATTTTGAATCTC
 TCACAGCCCAACAGTATGAGATACTCTCAAAAAGTCTCCGCAAAACCAGAGAATATTTGTGCATGGCTT
 GCCGGGCTCAGGGAAGACAATCATAGCCATGAAAATCATGAAAAGATCAGAAAACACATTCCTACTGTGAA
 ACAGATAGAATCCTCTACATCTGTGAAAATCAGCCATTGAGGGACTTCATCCAGGCAAAAAATATCTGCC
 AGGCAGTGACCCGGGAAACCTTCATGAAAGATTCTTTGAGACAAACAGGATCCAACATATCATTGTTGA
 TGAAGCCCAAGATTTCTGCACTGAAGATGGGAACTGGTATGAGAAGGCAAAAGGAATCACTCGAAGAATG
 AAATGTTGTCTGGAATTTCTCTGGATCTTTCTGGACTATTTTTCAGACCAGTCACTTGAAGAAGAGTGGCC
 TCCCAATTTCTTATGCCAGTTTCCGACGGAAAAGCTCACACAAATGGTACGCAATGCAGATAAAAATAGC
 TGAGTTCTACAACAAGAGTTGCGAAAAATCAGAGCTAACCTCCATTGAGCATCCCTCAAGGGTCCCTA
 AGCATGTTCCATGGATTTTACTGGGCTCAGGGTGTATCAGGCACCCATGAGATTACATACTTGACTTTGG
 AAAAGATGGTAAGCTATGTAGCAGATAAGTGTGATGTTTTCTTGAGTAAAGGCTATTCTCCCAAGATAT
 TGCAGTGCTTTTTCAGCACAGACAGGGAAAAGAAAGCCTATGAGCATATGTTCTGAGAGAAAATAAGGAAG
 AGGAAGAGAGCATCTCAGATGAATGACCGTCTGTCTGTCAATTAACATGTTTGCAGCATCCGTCGAT
 TCTCAGGACTGGAAAAAGCATTGTGTTTGGTATCAATCCAATGCAACTGAGCAGCCCATTTCCACAA
 CCTATTGCTCTGCCTGGCTTCCAGAGCAACGGAACATCTGTATATCCTGTATCTTTCAACTCCTGAGGG
 TATAGCTCAACAGTGGCATGC

AG**CGGACCG**ACGCGTACGCGGCCGCTCGAGCAGAACTCATCTCAGAAGAGGATCTGGCAGCAAATGATATCC
 TGGATTACAAGGATGACGACGATAAGGTTTAA

Protein Sequence: >MR221757 representing NM_181542
 Red=Cloning site Green=Tags(s)

MQTTNKSEHPVEMGQDLEKSLRELIMSSNMQGGFFETKQQEDQFYIFVKSWSCSPEDASTKPRICSLGSSL
 YCRSLTSNVAMDSREAFDFLKGKKRCVKCSPTDDRANKIPGAMYQNSLETNPAFEIFQSKKLEYGQHLLF
 SESTFIQFKQFSTKHVQEYIKNKIPEYISAFANTQGGYLFIVGDDKSTILGCPKDNVDRDSLKTIVANEAI
 SKLPVHFHCSSKDKDKVSYETRVIDVFQEGNLYGLCVIKVEPFCCAVFSEAPISWVMDKEKGVYRLNTE
 EWRMMDVVGPEAASKDLKDFECQLSLNSPPRCRPVYSKKGLEKVDLQQLHFLQVSPDHLKYTPESLW
 SELCFEHERLEDLVKQQIRSFSCGLLILSRWAVDLNLEEKQEVICDALLIAENSPPILYTILGEQDEQG
 QDYCTSTAFTLKQKLVNTGGYTGRVCVMTKVLCLSSQNSIETNGGSVSPIDYPHSYNLANIQEMQDLLQA
 LVIVLLNFRSFLSDQLGCEILNLLTAQQYEILSKSLRKTREL FVHGLPGSGKTIIAMKIMEKIRNTFHCE
 TDRILYICENQPLRDFIQAKNICQAVTRETFMKDYFETNRIQHIIVDEAQNFC TEDGNWYEKAKGITRMR
 KCCPGILWIFLDYFQTSHLKKSGLPNFLCQFPTEKLTQMVRNADKIAEFLQQLRKRIRANPPFSIPQGS
 SMFHGFYWAQGVSGTHEITYLTLEKMVSYYADKCDVFLSKGYSPQDIAVLFDSTREKKAYEHMFLREIRK
 RKRASQMNDA SVCHSNMFD SIRRFSGLEKSIVFGINPNATEQPI SHNLLLCLASRATEHL YILYLSTPEG
 YSSTVAC

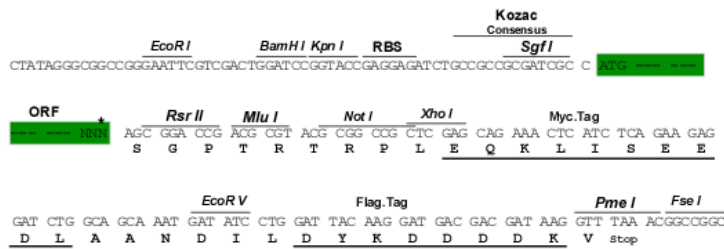
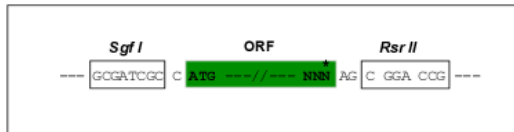
SGP TRTRPLEQKLI SEEDLAANDILDYKDDDDKV

Chromatograms: https://cdn.origene.com/chromatograms/mm9099_a08.zip

Restriction Sites: SgfI-RsrII

Cloning Scheme:

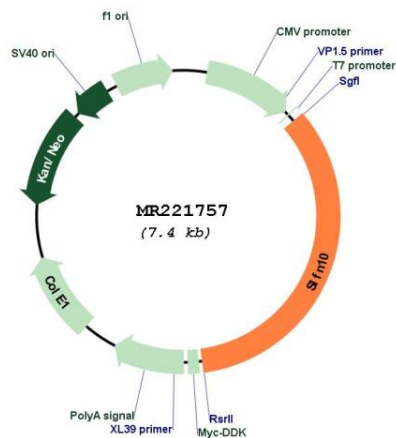
Cloning sites used for ORF Shuttling:



* The last codon before the Stop codon of the ORF

ACCN:	NM_181542
ORF Size:	2541 bp
OTI Disclaimer:	The molecular sequence of this clone aligns with the gene accession number as a point of reference only. However, individual transcript sequences of the same gene can differ through naturally occurring variations (e.g. polymorphisms), each with its own valid existence. This clone is substantially in agreement with the reference, but a complete review of all prevailing variants is recommended prior to use. More info
OTI Annotation:	This clone was engineered to express the complete ORF with an expression tag. Expression varies depending on the nature of the gene.
Components:	The ORF clone is ion-exchange column purified and shipped in a 2D barcoded Matrix tube containing 10ug of transfection-ready, dried plasmid DNA (reconstitute with 100 ul of water).
Reconstitution Method:	<ol style="list-style-type: none"> 1. Centrifuge at 5,000xg for 5min. 2. Carefully open the tube and add 100ul of sterile water to dissolve the DNA. 3. Close the tube and incubate for 10 minutes at room temperature. 4. Briefly vortex the tube and then do a quick spin (less than 5000xg) to concentrate the liquid at the bottom. 5. Store the suspended plasmid at -20°C. The DNA is stable for at least one year from date of shipping when stored at -20°C.
RefSeq:	NM_181542.4 , NP_853520.3
RefSeq Size:	3516 bp
RefSeq ORF:	2544 bp
Locus ID:	237887
Cytogenetics:	11 C
MW:	96.9 kDa

Product images:



Circular map for MR221757