

Product datasheet for **MR221747**

Mfrp (NM_147126) Mouse Tagged ORF Clone

Product data:

Product Type:	Expression Plasmids
Product Name:	Mfrp (NM_147126) Mouse Tagged ORF Clone
Tag:	Myc-DDK
Symbol:	Mfrp
Synonyms:	rd6
Mammalian Cell Selection:	Neomycin
Vector:	pCMV6-Entry (PS100001)
E. coli Selection:	Kanamycin (25 ug/mL)



[View online »](#)

ORF Nucleotide Sequence:

>MR221747 representing NM_147126
 Red=Cloning site Blue=ORF Green=Tags(s)

TTTTGTAATACGACTCACTATAGGGCGGCCGGAATTCGTCGACTGGATCCGGTACCGAGGAGATCTGCC
 GCC**GCGATCGCC**

ATGAAGGACTATGACGACGTCATCCTCCGTCCAGAGGCGAGTGAGTTGAGCAAGACAGAGTTCTGTAATC
 CTGCTTTTCGACCCGGAAGCAGGGCCATCCTGCCCTCCACCAGCGTTACAGAGGGATGTCGGCAGCCGGCT
 CCAAGCCCCCTGGCATGCCAGCGTCTCCGGGGCTACAGCCGACTGCCACTTCTCCTGGTTCTGTATT
 CTGCTTCTCAGTGGCCTGCTGCTCCTGCTGCTGGGGCTACTGGTGGCTGTCATCCTGGCTCAGTGCAGG
 CTACATCCCTCCCAGGACTACCAAGAACCCTGCTCACCCGAGGCTCACCCCATGGGTGTCATTCC
 CAGCACCACCCCTAACACCACCACCACCACCACCCTACCACCCAGCAAGGACAGGGCAGCAGGAGGCA
 GCCATGAGCCCTACACACCAGACCCTGTGGAGGCTCCTTCTGGTCCCAGTGGTTTCTTCAGCAGCC
 CTAACACCCAGACCTTACCCACCCCTCAGCCACTGTGTCTGGCATATCCAGGTAGCCGCGGGCCAGAC
 AATACAGCTCAAGATTCAAGCCCTCAGCATAGAGAGTATGCTCACCTGTCTTTTTGATCGCTTGGAAATT
 ATCTCAGAGCCTACAGGCCCTCCTCAGGGTGTGTGGTAAAACACCTCCTGCCACATTAACACCAATA
 CCAGCCACCTCCGTGTGTCTTCTGCTCTGATAACGATGTGGAAGGGTCTGGTTTCCAGGCTGGTACCA
 AGCAGTGGCCCTGGACATTGGAGCTGTGCCATAATGAGTTCCTGTGACCTTCTCCTGCTGCCTGAAG
 CGTGACTCTGTATGTGACGGTATTACCGAGTGTCCGATGGCAGTGACGAGGCCAACTGCAGTGCCAAGA
 CGTTGGGGTGTGGAGGGAACCTGACTGGGCTCTATGGCGTATTCTTACCCAACTATCCACAGCACTA
 CCCTCACCAACAGCTTTGACCTGGTACATCGAAGTGCCTGTGGGATACGGGATAAGACTGGAGTCCAC
 AACTTCAGTCTGGAAGCACAGGCTGAGTGAAGTTTACTACGTGGAAGTGTACGAGGCCAGCAACCTGG
 GAACCTTCAGCTTCTGGCAGGTTCTGTGGAGCAGAGCCACCCTCAACGTTGTCTCCTCGATGCACCA
 GCTGGCTGTAATCTTCAAGACGGATCTTGGTATCAGCAGCGGGGCTTTCTAGCCACCTACCAGGCCATC
 AATACTACAGAGAGTGGGTGTCCCTGGGCAGGTTCTGCCAGAGCGGAGGATATAGGGATCTGCAATGGA
 TGTGTGACTTATGGAAAGACTGTGCAAATGACAGCAACGACAACCTGCAGCAGCCACTTGTCCCAACAAC
 AGACCTGACCTGTGAACCTGTCCAGGTGGAGATGTGCCTTGGACTAAGCTACAATACCACGGCCTTCTCT
 AACATCTGGTGGGCTGGCCACGCAGACAGAGGTGACAGACATCCTCCGAGGCTACAAGAGTCTGACAA
 GTCTACCCTGCTACCAGACTTCCAGAGGTTCTCTGTGGACTGCTTGTGCCTCGATGCACCTCACTGGG
 CACTATCCTACCCCTTGTGTTCCGTCTGCCAGGCGGGGAGCAGCAGTCCAGTCTAGCTGGCATT
 TTGGGCACCCCTGGCCTTCAACTGCAACAGGCTGCCCGTGGCAGCTAGCCTGGAAGCTTGTCCCAGC
 CC

ACGCGTACGCGGGCCGCTCGAGCAGAAACTCATCTCAGAAGAGGATCTGGCAGCAAATGATATCCTGGATT
 ACAAGGATGACGACGATAAGGTTTAA

Protein Sequence:

>MR221747 representing NM_147126
 Red=Cloning site Green=Tags(s)

MKDYDDVILRPEASELSKTEFCNPAFDPEAGPSCPPPALQRDVGSRLQAPWHAQRLRGLQPDCHFSWFCI
 LLLSGLLLLLLGLLVAVILAQLQATSLPRTTKNPLLTRGLTPMGVIPSTTPNTTTTTTTTPARTGQQEA
 AMSPTHQTTCCGLLPGPSGFFSSPNYPDLYPPLSHCVWHIQAAGQTIQLKIQUALSIESMLTCLFDRLEI
 ISEPTGPLLRVCGKTPP ATLNTNTSHLRVSVFSDNDVEGSGFQAWYQAVAPGHWSAHNEFHCDLLCLK
 RDSVCDGITCADGSDEANCSAKTLGCGGNLTGLYGVFSTPNYPQHYPHQQLCTWYIEVPVGYGIRLEFH
 NFSLEAQAECKFDYVEVYEASNLGTF SFLGRFCGAEPPLNVVSSMHLAVIFKTDLGISSGGFLATYQAI
 NTTESGCPWAEFCQSGGYRDLQWMDLWKDCANDSNDNCSSHLSPQDLTCEPVQVEMCLGLSYNTTAFP
 NIWVGLATQTEVTDILRGYKSLTSLPCYQTFQRFLLCGLLVPRCTSLGITLPPCRSVCQAAEQCCQSSLAL
 LGTPWPFNCNRLPVAASLEACSQP

TRTRPLEQKLISEEDLAANDILDYKDDDDKV

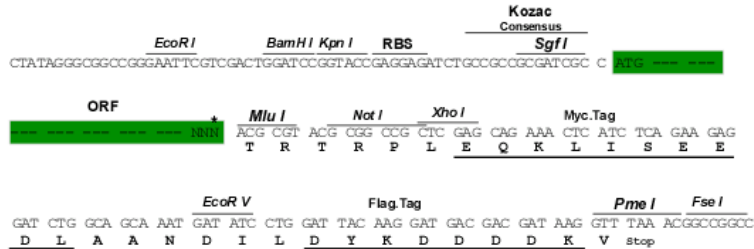
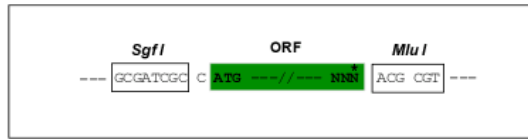
Chromatograms:

https://cdn.origene.com/chromatograms/mm9085_d08.zip

Restriction Sites: SgfI-MluI

Cloning Scheme:

Cloning sites used for ORF Shuttling:



* The last codon before the Stop codon of the ORF

ACCN: NM_147126

ORF Size: 1752 bp

OTI Disclaimer: The molecular sequence of this clone aligns with the gene accession number as a point of reference only. However, individual transcript sequences of the same gene can differ through naturally occurring variations (e.g. polymorphisms), each with its own valid existence. This clone is substantially in agreement with the reference, but a complete review of all prevailing variants is recommended prior to use. [More info](#)

OTI Annotation: This clone was engineered to express the complete ORF with an expression tag. Expression varies depending on the nature of the gene.

Components: The ORF clone is ion-exchange column purified and shipped in a 2D barcoded Matrix tube containing 10ug of transfection-ready, dried plasmid DNA (reconstitute with 100 ul of water).

Reconstitution Method:

1. Centrifuge at 5,000xg for 5min.
2. Carefully open the tube and add 100ul of sterile water to dissolve the DNA.
3. Close the tube and incubate for 10 minutes at room temperature.
4. Briefly vortex the tube and then do a quick spin (less than 5000xg) to concentrate the liquid at the bottom.
5. Store the suspended plasmid at -20°C. The DNA is stable for at least one year from date of shipping when stored at -20°C.

RefSeq: [NM_147126.3](#), [NP_667337.1](#)

RefSeq Size: 4292 bp

RefSeq ORF: 1755 bp

Locus ID: 259172

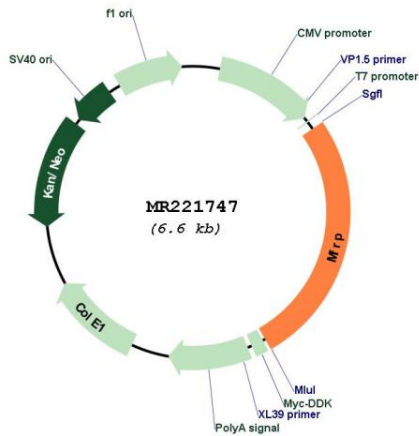
UniProt ID: [Q8K480](#)

Cytogenetics: 9 24.6 cM

MW: 63.7 kDa

Gene Summary: The protein encoded by this gene contains a region with similarity to the cysteine-rich domain (CRD) of frizzled, a gene originally found in *Drosophila* that controls tissue polarity. This protein functions in eye development, where it is necessary for the maintenance of photoreceptor outer segments. Mutations in this gene cause retinal degeneration 6 in mice, which gives rise to a mouse model for human retinitis punctata albescens. Bicistronic transcripts composed of the coding sequences for this gene (*Mfrp*) and the C1q and tumor necrosis factor related protein 5 gene (*C1qtnf5*) have been identified, and the resulting products can interact with each other. Co-transcription of *C1qtnf5* and *Mfrp* has been observed in both human and mouse. Alternative splicing results in multiple transcript variants. [provided by RefSeq, Jun 2010]

Product images:



Circular map for MR221747