

Product datasheet for **MR221706**

Nsmf (NM_001177654) Mouse Tagged ORF Clone

Product data:

Product Type:	Expression Plasmids
Product Name:	Nsmf (NM_001177654) Mouse Tagged ORF Clone
Tag:	Myc-DDK
Symbol:	Nsmf
Synonyms:	Jacob; Nelf
Vector:	pCMV6-Entry (PS100001)
E. coli Selection:	Kanamycin (25 ug/mL)
Cell Selection:	Neomycin



[View online »](#)

ORF Nucleotide Sequence:

>MR221706 representing NM_001177654
 Red=Cloning site Blue=ORF Green=Tags(s)

TTTTGTAATACGACTCACTATAGGGCGGCCGGAATTCGTCGACTGGATCCGGTACCGAGGAGATCTGCC
 GCC**CGCATCGCC**

ATGGGTGCCGCCCTCCAGGAGGAGGGCGCTGAGGAGCGAGGCCATGTCCTCGGTAGCGGCCAAAGTAA
 GAGCAGCCCGAGCGTTTGGAGAGTACCTGTCCCAGAGTACCCTGAGAACCGCAACGGTGCAGACCCT
 GCTGGCTGACGCCTACTCTGGCCACGACGGTCCCAGAGATGCAACCTGCACCCAGAACAAGCGCCG
 CTCTCCCTCGTCTCCAATGGCCGATATGAGGGCAGCATCTCAGATGAGGCAGTCAGCGGGAAGCCGCTA
 TAGAGGGCCCCAGCCCCACGTGTACACCATCTCTAGAGAGCCCGCCCTGCTACCTGGCTCTGAAGCTGA
 AGCCATTGAGCTAGCAGTGGTAAAAGGGAGGAGACAGCGGGAACGGCACCCCTCACCACCAGCCAGCCC
 CTGCGTGCCAGCCAGGCAGCAGCGGGAGGACATCAGCAGGCCCTGCCAAAGCTGGGCAGGAAGCCGCC
 AGGGCTCAAAGAGTGCCAGGATGTGCCAGTGGTCCCTGGTCCCTCTTCTCGGGCCTTTGGGCTGGA
 GCAGCCACCTCTACCTGAGGCTCTGGCCGCCACAAGAAGCTGGAAGGATGTATAGCGTTGATGGAGTG
 TCTGATGATGTCCCATCCGTACCTGGTCCCAAGGAAAACCTTTTCAGCTTCCAGACGGCAACCAAA
 CTATGCAAGCGGTATTCAGGGGCTACGCGGAGAGGAAGCGTCGGAACCGGAGAATGATCCGCGTCTGT
 AATCCAGAGGAACCTCCGCAACACCTGCGCATGGTTGGCAGTCGGCGGGTGAAGGCCAGACGTTCCGCT
 GAGCGTCGCGAACGGAGCTTCAGCCGGTCTGGAGCGACCCACCCTATGAAAGCCGACACTTCCCACG
 ACTCCCGAGACAGCAGTGACCTACAGAGCTCACACTGCACCCTGGATGAGGCTTGTGAGGACCTGGACTG
 GGACACAGAGAAAGTCTGGAGGCCATGGCCTGCAACACCGAGGGCTTCTTGCCACCAAGGTCATGCTC
 ATCTCCTCAAAGTGCCTAAAGGCCGAGTATCCCTACTATCATCCGAGAGATGACCCGTCATCATT
 CCATCCTCTACGACCAGCATGCAACCTTCGAGGACATCCTGGAGAAATAGAGAAGAAATGAACAT
 CTATCACAAAGGGGCAAGATCTGGAAGATGCTGATTTTCTGCCAGGGCGGCCCTGGACACCTTTATTTG
 CTCAAGAACAAGGTGGCCACCTTTGCCAAAGTGGAGAAGGAAGAGGACATGATCCACTTCTGGAAGAGGC
 TGAGCCGCTGATGAGCAAGGTGAACCCGAGCCGAATGTATCCACATCATGGGCTGCTACATTCTGGG
 GAACCCTAACGGGGAGAAGAACCCTCAGGACCCTCATGACCCCTTACAAGTTACCTTTGAGTCGCTCTC
 GAGCTGTCTGCCAAGGGAAGCAGATGATTGAGACCTACTTTGACTTCCGGCTGTACCGCTGTGGAAGA
 GCCCCAGCACTCAAAGCTGCTGGACTTTGATGACGTCCTG

ACGCGTACGCGGCCGCTCGAGCAGAACTCATCTCAGAAGAGGATCTGGCAGCAAATGATATCTGGATT
 ACAAGGATGACGACGATAAGGTTTAA

Protein Sequence:

>MR221706 representing NM_001177654
 Red=Cloning site Green=Tags(s)

MGAAASRRRALRSEAMSSVAAKVRARAFGEYLSQSHPENRNGADHLLADAYSGHDGSPMQPAPQNKRR
 LSLVSNRYEGSISDEAVSGKPAIEGPQPHYVTISREPALLPGSEAEIELAVVKRRRQRERHPHHHSQP
 LRASPGSSREDISRQCQSWAGSRQGSKECPGCAQLVPGPSSRAFLEQPPLPEAPGRHKKLERMYSVDGV
 SDDVPIRTWFPKENLFSFQTATTTMQAVFRGYAERKRRKRENDASVIQRNFRKHLRMVGSRRVKAQTFA
 ERRERSFSRSWSDPTPMKADTSHDSRDSDLQSSHCTLDEACEDLDWDTEKGLEAMACNTEGFLPPKVML
 ISSKVPKAEYIPTIIRDDPSIIPILYDHEHATFEDILEEIEKKLNIYHGAKIWKMLIFCQGGPGHLYL
 LKNKVATFAKVEKEEDMIHFWKRLSRLMSKVNPEPNVIHIMGCYILGNPNGEKNLRLTLPYKVTTFESPL
 ELSAQGKMIETYFDFRLYRLWKSQRHSLKLLDFDDVL

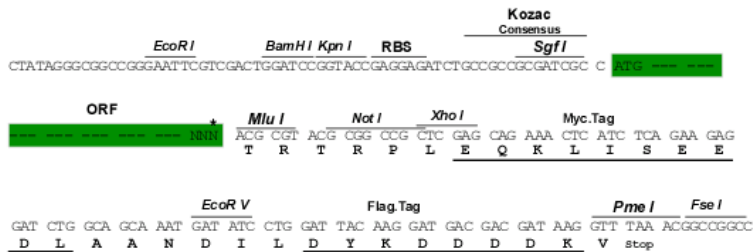
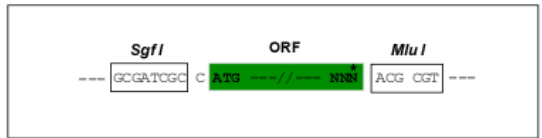
TRTRPLEQKLISEEDLAANDILDYKDDDDKV

Restriction Sites:

Sgfl-MluI

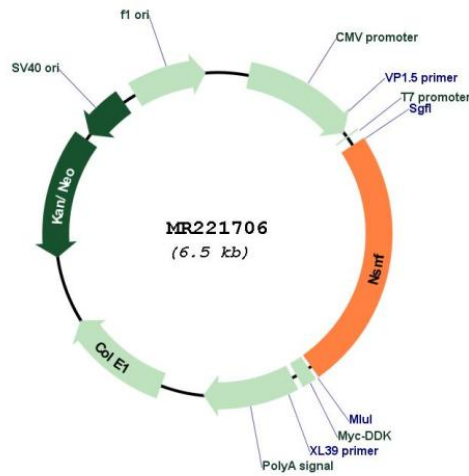
Cloning Scheme:

Cloning sites used for ORF Shutting:



* The last codon before the Stop codon of the ORF

Plasmid Map:



ACCN:	NM_001177654
ORF Size:	1581 bp
OTI Disclaimer:	The molecular sequence of this clone aligns with the gene accession number as a point of reference only. However, individual transcript sequences of the same gene can differ through naturally occurring variations (e.g. polymorphisms), each with its own valid existence. This clone is substantially in agreement with the reference, but a complete review of all prevailing variants is recommended prior to use. More info
OTI Annotation:	This clone was engineered to express the complete ORF with an expression tag. Expression varies depending on the nature of the gene.
Components:	The ORF clone is ion-exchange column purified and shipped in a 2D barcoded Matrix tube containing 10ug of transfection-ready, dried plasmid DNA (reconstitute with 100 ul of water).
Reconstitution Method:	<ol style="list-style-type: none">1. Centrifuge at 5,000xg for 5min.2. Carefully open the tube and add 100ul of sterile water to dissolve the DNA.3. Close the tube and incubate for 10 minutes at room temperature.4. Briefly vortex the tube and then do a quick spin (less than 5000xg) to concentrate the liquid at the bottom.5. Store the suspended plasmid at -20°C. The DNA is stable for at least one year from date of shipping when stored at -20°C.
RefSeq:	NM_001177654.1 , NP_001171125.1
RefSeq Size:	2934 bp
RefSeq ORF:	1584 bp
Locus ID:	56876
UniProt ID:	Q99NF2
Cytogenetics:	2 A3
MW:	60.2 kDa
Gene Summary:	Couples NMDA-sensitive glutamate receptor signaling to the nucleus and triggers long-lasting changes in the cytoarchitecture of dendrites and spine synapse processes. Part of the cAMP response element-binding protein (CREB) shut-off signaling pathway. Stimulates outgrowth of olfactory axons and migration of gonadotropin-releasing hormone (GnRH) and luteinizing-hormone-releasing hormone (LHRH) neuronal cells.[UniProtKB/Swiss-Prot Function]