

Product datasheet for **MR221680**

Slc8a3 (NM_080440) Mouse Tagged ORF Clone

Product data:

Product Type:	Expression Plasmids
Product Name:	Slc8a3 (NM_080440) Mouse Tagged ORF Clone
Tag:	Myc-DDK
Symbol:	Slc8a3
Synonyms:	AW742262; Ncx3
Mammalian Cell Selection:	Neomycin
Vector:	pCMV6-Entry (PS100001)
E. coli Selection:	Kanamycin (25 ug/mL)



[View online »](#)

ORF Nucleotide Sequence:

>MR221680 representing NM_080440
 Red=Cloning site Blue=ORF Green=Tags(s)

TTTTGTAATACGACTCACTATAGGGCGGCCGGAATTCGTCGACTGGATCCGGTACCGAGGAGATCTGCC
 GCC**CGGATCGCC**

ATGGCGTGGTTACGGCTGCAGCCTCTCACCTCTGCCTTCTCCATTTTGGGCTGGTTACTTTTGTGCTCT
 TCCTGAATTGTCTTCGAGCAGAGGCTGGTACTCGGGGATGTGCCAGTGCAGGGCAGAACAATGAGTC
 CTGTTCCGGGTATCAGACTGCAAGGAGGGTGTCAATTTGCCAATCTGGTATCCAGAGAACCCTTCCTT
 GGGACAAGATTGCCAGGGTCATTGTCTATTTTGTGGCCCTGATACATGTTTCTTGGGGTGTCTATCA
 TTGCTGACCGATTATGGCATCTATTGAAGTCACTTCCCAAGAGAGGGAAAGTACCATCAAGAAGCC
 CAATGGAGAGACCAGCACAACTACAATTCGGGTATGGAATGAACTGTCTCCAATCTGACCTGATGGCC
 CTGGGCTCTTCTGCTCCAGAGATTCTCCTGTCTTAATTGAGGTGTGGTACGGGTCATTGCTGGTG
 ATCTGGGACCATCTACCATCGTTGGCAGTGCAGCCTTCAACATGTTTCATCATCTTGGCATCTGTGCTA
 TGTGATCCAGATGGGGAGACTCGAAAGATCAAGCACCTGCGAGTCTTCTCGTACGGCTGCTGGAGC
 ATCTTCGCTACATTTGGCTCTATATGATCCTGGCAGTCTTCTCCTCGTGTGGTCCAGGTTTGGGAAG
 GCCTCCTTACTCTTCTTCTTTCCCGTGTGTCTGCTGGCTTGGGTGGCAGATAAGCGACTGCTCTT
 CTACAAATACATGCACAAAAATACCGCACAGATAAACACCGAGGAATTATCATTGAGACAGAGGGTGAC
 CACCCTAAGGGCATTGAGATGGATGGGAAAATGATGAATTCTCACTTTCTAGATGGGAACCTTACACCTT
 TGGAAAGAAAGGAGGTAGATGAATCTCGCAGGGAAATGATCCGGATTCTAAAGGATCTGAAACAAAAACA
 CCCAGAAAAGGACCTAGATCAGCTGGTGGAGATGGCCAATTACTATGCTCTTTCCCATCAACAGAAGAGC
 CGTGCTTTCTACCGCATCAAGCCACCCGGATGATGACTGGTGGGGCAATACTTAAGAAGCATGCAG
 CCGAGCAAGCCAAGAAGACCTCCAGCATGAGCGAGGTGCATACCGATGAGCCGGAGGACTTTGCCTCTAA
 GGTCTTCTTTGACCCATGTTCTTATCAGTGCCTGGAGAAGTGTGGAGCTGCTCCTGACCGTGGTGAGG
 AAAGGGGGAGATATATCCAAGACCATGTACGTGGACTACAAAACAGAGGACGGCTCCGCCAATGCAGGGG
 CAGACTATGAGTTCACAGAGGGCACTGTGGTCTGAAGCCAGGAGAGACCCAGAAGGAGTCTCTGTGGG
 CATCATTGATGATGACATTTTGGAGGAGTGAACACTTCTTGTGAGGCTGAGCAATGTCGGTGTAGAA
 GAGGAGCAGTGGCGGAGGGGATGCTCCAGCAATACTCAATAGTCTTCTTTCCTCGGGCTGCTCTGG
 CCTCCCTTGTGTGGCCACAGTAACCATCTTGGATGATGACCATGCAGGAATTTTCACTTTTGAATGTGA
 TACCATTATGTCAGTGAAGTATTGGTGTATGGAAGTCAAGGTTTTGAGGACATCAGGTGCCAGGGGC
 ACAGTCATCGTCCCTTTAGGACAGTAGAAGGGACAGCCAAGGGTGGTGGCGAGGACTTTGAAGATGCAT
 ATGGGGAGCTGGAGTTCAAGAATGATGAAACAGTCAAAACAATTCACATCAAGGTAAATGATGATGAGGC
 GTATGAGAAAAACAAGAATTACGTCATTGAGATGATGGGCCCCCGCATGGTGGATATGAGTGTTCAGAAA
 GCGCTCCTGTTATCTCCAGAAGTGACAGACAGGAAGCTGACTGTGGAGGAAGAGGAAGCCAAGAGAATAG
 CAGAGATGGGAAAGCCAGTATTGGGTGAACACCCCAAACCTAGAGGTATCATTGAAGAGTCTATGAGTT
 CAAGAGTACAGTGGATAAGCTGATCAAGAAGACAAACCTGGCATTGGTTGTGGGGACCCATTCTGGAGG
 GACCAGTTCATGGAAGCCATCACTGTTAGTGCAGGAGGGGATGAGGATGAAGACGAATCTGGAGAGGAGA
 GGCTGCCATCTGCTTTGACTACGTATGCACTTCTGACGGTCTTCTGGAAGGTGCTCTTTGCCTGTGT
 GCCCCCCACAGAGTACTGCCACGGCTGGCCCTGCTTCTGTTGCTCCATCCTCATTATTGGCATGCTCACC
 GCCATCATCGGGGACCTGGCCTCTCACTTCGGCTGCACCATCGGGCTCAAGGATTCGGTACAGCTGTTG
 TTTTGTGGCATTCCGGCACCTCTGTGCCAGATACATTTGCCAGCAAGGCCGCTGCCCTGCAGGACGTGTA
 TGCAGATGCTTCCATTGGCAACGTACAGGCGAGTAATGCCGTCAATGTCTTCTGGGATTGGTTTGGCC
 TGGTCCGTGGCCGCCATCTACTGGGCCATGCAGGGACAGGAGTTCATGTGTCCGCTGGCACTCTGGCCT
 TCTCGGTCACTCTTTTACCATCTTTGCAATTTGTCTGCCTCAGTGTGCTTGTATCGTCCGGCGGCCCA
 TCTGGGCGGGGAGCTCGGAGTCTCGTGGCTGCAAGCTTGCCACGACATGGCTCTTTGTGAGCCTATGG
 CTCCTCTACATACTATTTGCCACGCTGGAGGCCTACTGCTACATCAAGGGGTTT

ACGCGTACGCGGCCGCTCGAGCAGAAACTCATCTCAGAAGAGGATCTGGCAGCAAATGATATCCTGGATT
 ACAAGGATGACGACGATAAGGTTTAA

Protein Sequence: >MR221680 representing NM_080440
 Red=Cloning site Green=Tags(s)

MAWLRLQPLTSAFLHFGLVTFVFLNCLRAEAGDSGDVPSAGQNNESCSGSSDCKEGVILPIWYPENPSL
 GDKIARVIVYFVALIYMFLGVSIADRFMASIEVITSQEREVTIKKPNGETSTTTIRVWNETVSNLTLMA
 LGSSAPEILLSLIEVCGHGFIAAGDLGPSTIVGSAAFNMFIIIGICVYVIPDGETRRIKHLRVFFVTAWS
 IFAYIWL YMILAVFSPGVVQVWEGLLTLFFFPVCVLLAWVADKRLLFYKYMHKKYRTDKHRGIIETEGD
 HPKGIEMDGMMNSHFLDGNFTPLEGKEVDESRREMIRILKDLKQKHPEKDLQQLVEMANYALSHQOKS
 RAFYRIQATRMMTGAGNILKKHAAEQAKKTSSEMSEVHTDEPEDFASKVFFDPCSQCLENCGAVLLTVVR
 KGGDISKTMVVDYKTEDGSANAGADYEFTEGTVVLKPGETQKEFSVGIIDDDIFEDEHFFVRLSNVRVE
 EEQLAEGMLPAIILNSLPLPRAVLASPCVATVITLDDDHAGIFTFECDTIHVSESIGVMEVKVLRVTSARG
 TVIVPFRVTEGTAKGGGEDFEDAYGELEFKNDETVKTIHIKVIDDKAYEKNKNYVIEMMGPRMVDMSVQK
 ALLLSPEVTRDKLTVEEEEAKRIAEMGKPVLEHPKLEVIIEESYEFKSTVDKLIKTNLALVVGTHSWR
 DQFMEAITSAGGDEDEDESGEERLPSCFDYVMHFLTVFWKVLACVPPTTEYCHGWACFVVSILIGMLT
 AIIIGDLASHFGCTIGLKDSVTAVVFAVGTSPDPTFASKAAALQDVYADASIGNVTGSNAVNVFLGIGLA
 WSYAAIYWAMQGGQEFHVSAGTLAFSVTLFTIFAFVCLSVLLYRRRPHLGGELGGPRGCKLATTWLFVSLV
 LLYILFATLEAYCYIKGF

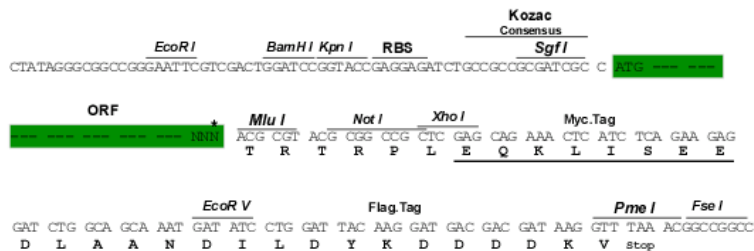
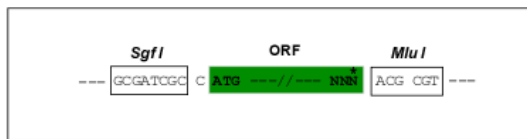
TRTRPLEQKLISEEDLAANDILDYKDDDDKV

Chromatograms: https://cdn.origene.com/chromatograms/mm9003_b01.zip

Restriction Sites: SgfI-MluI

Cloning Scheme:

Cloning sites used for ORF Shuttling:



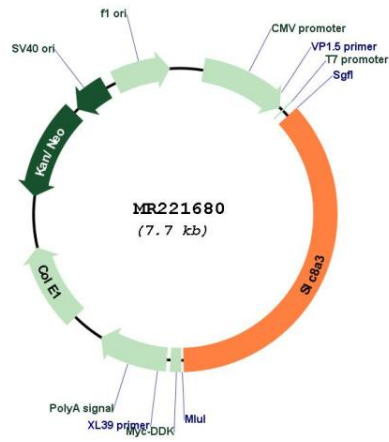
* The last codon before the Stop codon of the ORF

ACCN: NM_080440

ORF Size: 2784 bp

OTI Disclaimer:	The molecular sequence of this clone aligns with the gene accession number as a point of reference only. However, individual transcript sequences of the same gene can differ through naturally occurring variations (e.g. polymorphisms), each with its own valid existence. This clone is substantially in agreement with the reference, but a complete review of all prevailing variants is recommended prior to use. More info
OTI Annotation:	This clone was engineered to express the complete ORF with an expression tag. Expression varies depending on the nature of the gene.
Components:	The ORF clone is ion-exchange column purified and shipped in a 2D barcoded Matrix tube containing 10ug of transfection-ready, dried plasmid DNA (reconstitute with 100 ul of water).
Reconstitution Method:	<ol style="list-style-type: none">1. Centrifuge at 5,000xg for 5min.2. Carefully open the tube and add 100ul of sterile water to dissolve the DNA.3. Close the tube and incubate for 10 minutes at room temperature.4. Briefly vortex the tube and then do a quick spin (less than 5000xg) to concentrate the liquid at the bottom.5. Store the suspended plasmid at -20°C. The DNA is stable for at least one year from date of shipping when stored at -20°C.
RefSeq:	NM_080440.3 , NP_536688.2
RefSeq Size:	4964 bp
RefSeq ORF:	2787 bp
Locus ID:	110893
UniProt ID:	S4R2P9
Cytogenetics:	12 37.44 cM
MW:	103.4 kDa
Gene Summary:	Mediates the electrogenic exchange of Ca(2+) against Na(+) ions across the cell membrane, and thereby contributes to the regulation of cytoplasmic Ca(2+) levels and Ca(2+)-dependent cellular processes. Contributes to cellular Ca(2+) homeostasis in excitable cells, both in muscle and in brain (PubMed:14722618, PubMed:21593315). In a first phase, voltage-gated channels mediate the rapid increase of cytoplasmic Ca(2+) levels due to release of Ca(2+) stores from the endoplasmic reticulum. SLC8A3 mediates the export of Ca(2+) from the cell during the next phase, so that cytoplasmic Ca(2+) levels rapidly return to baseline (PubMed:14722618, PubMed:21593315). Contributes to Ca(2+) transport during excitation-contraction coupling in muscle (PubMed:14722618). In neurons, contributes to the rapid decrease of cytoplasmic Ca(2+) levels back to baseline after neuronal activation, and thereby contributes to modulate synaptic plasticity, learning and memory (PubMed:21593315). Required for normal oligodendrocyte differentiation and for normal myelination (PubMed:21959935). Mediates Ca(2+) efflux from mitochondria and contributes to mitochondrial Ca(2+) ion homeostasis (PubMed:24616101). Isoform 1 displays higher calcium exchanger activity than isoform 2, probably because isoform 1 has a lower threshold for activation by cytoplasmic Ca(2+) (PubMed:24616101).[UniProtKB/Swiss-Prot Function]

Product images:



Circular map for MR221680