

Product datasheet for **MR221672**

H6pd (NM_173371) Mouse Tagged ORF Clone

Product data:

Product Type:	Expression Plasmids
Product Name:	H6pd (NM_173371) Mouse Tagged ORF Clone
Tag:	Myc-DDK
Symbol:	H6pd
Synonyms:	A1785303; G6pd1; Gpd-1; Gpd1
Mammalian Cell Selection:	Neomycin
Vector:	pCMV6-Entry (PS100001)
E. coli Selection:	Kanamycin (25 ug/mL)



[View online »](#)

ORF Nucleotide Sequence:

>MR221672 representing NM_173371
 Red=Cloning site Blue=ORF Green=Tags(s)

TTTTGTAATACGACTCACTATAGGGCGGCCGGAATTCGTCGACTGGATCCGGTACCGAGGAGATCTGCC
 GCC**CGCATCGCC**

ATGAAGCACACAGGCATTTGGAAGATGCTCCTAGCGGCAATGTGCTTGGCCCTTCTGGGCTGCCTACAGG
 CGCAGGAACTCAAGGGTCATGTTTCCATAATCCTGCTGGGAGCAACCGGGACCTAGCTAAAAAGTACCT
 GTGGCAGGGACTGTTTCAGCTATACCTGGATGAGGCTGGGAAGGCCACAGTTTCAGCTTCCACGGTGCT
 GCCCTGACAGCCCCCAGCAAGGCCAGAAGCTCATGGACAAGGTCTTGAATCCCTCTCCTGTCCCAAGG
 ACTTGGTACCCAGTCGCTGTGATGAACTCAAGGGTCAGTTTCTACAGCTGAGCCAATACCGCCAGCTGAA
 GACAGTGGAGGACTATCAGACCCCAACAAGGATATTGAGACCCAGGTCCAGCAGGATGGGCTCTGGGAG
 GCAGGCAGGATCTTCTACTTCAGTGTGCCGCCCTTGCCTACGCAGACATTGCCCGTAACATCAACAGCA
 GCTGCCGACCACCCAGGTGCCTGGCTACGGGTTGTTTTGAAAAACCTTTGGCCATGACCACCTCTC
 AGCCCAGCAGCTGGCTTCAGAACTTGGGAGCTTTTTCCAGGAGGAGAGATGTACCGTGTGGATCATTAC
 CTGGCAAGCAGGCGGTGGCTCAGATCCTGCCCTCCGAGATCAGAACCAGCAAGGCTTGGATGGCTCT
 GGAACAGGCACCATGTGGAGCGGGTGGAGATCATCTTGAAGGAGACCATAGATGCCGAAGGTCGGGCCAG
 TTTCTATGAGGAGTATGGCGTCATCCGTGACACGCTGCAGAACCACCTGACTGAGATCCTCACGCTGGTG
 GCCATGGAAGTGCCTCTCAACATCAGCAGCTCAGCCGCGGTGCTCCAGCATAAGCTCTGGGCCTTCCAGG
 CCCTGCGGGGGCTGCAGAAGAGCAGTGCCATCCTGGGCCAGTACCAGGCCACAGCGGACAGGTGCGCCG
 AGAGCTGCAGAAGCCAGACGGCTTCCAGAGCCTGACACCAACCTTCGCAGGTGTCCTTGTCCACATCGAC
 AACCTGCGCTGGGAGGGTGTCCCTTTCATCCTGATGTCTGGCAAGGCCTTGGATGAGAGAGTGGGCTATG
 TTCGGATTGTGTTAAGAATCGGGCGTACTGCACCCAGAGCGAGAGACTGGGTGCCGGCAGAGCCG
 GTGCCTGCCCCAGCAGATTATCTTCTACATTGGACACGGTGAGCTGGGCCACCCTGCCATTCTGGTCAGC
 CGGAACCTGTTCAAACCTCACTACCCACTCAGAAGTGAAGGAGGTGCAGGACCAGCCTGGGCTCCGCC
 GTTTCGGCGTCTCTGTCTGATTAACAGCCTACAGGCCTGTGCGGGAGCAAGACGCTACTCCACCCT
 CCTGTGCGACATCTTCCACTGCCGAAAGGAGTCTTTCATCACCACAGAGAACCTTGTGCCCTCTGGGTC
 TTCTGGACCCCGTTACTGGACAGCCTGGCCTTGAAGTCCACGCCCATACCCAGGGGGAGCCGAGAATG
 GCCAGTCTGGACTTTGAGTTTAGCGGTGGTCAGCTGACCTTCTCCAGCAGCAGCTGGAGGTGCTGAT
 ACCAGATCTAGGCTCAGTCCCAAAGCCAGTGACTTCCAGGTCTCGGGGCCGGTATAGACAGAGCCCA
 CTGATTACCGCTGGCCAGAGGAGCTGATCTTAAGCTGGCCAGTGACATTGAAGCCGCCGGTGCAGG
 CAGTACGGCACTTCGGCAAGTCCACCTGGCACTGTCCAGGTGTTTCGAGCCCATAGCTCTTCCAGCA
 GCTGGCCACAGGACATTACAGCTTCCCCTGGGCCACACACACCTCTGGCTGGTTGATGAGCGTTGTGTC
 CCTCTCTCAGATCCAGACTCCAACCTCCAGGGCCTGCAGGCTCACCTGCTACAGCACGTCAGGGTACCCT
 ACTACAACATCCACCCGATGCCAGTGCACCTGCACCAGCGGCTCTGTGCCGAGGAGGACCAGGGAGCTCA
 GACCTATGCCAGTGAGATCTCAGCCCTGGTGGCCAACAGCAGCTTCGACCTGGTGTCTCTGGGCATGGGC
 ACCGACGGGCACACAGCTTCTCTGTTCCACAGTCCCCACAGGCCTGGATGGTGTGATCAGCTGGTGGTGC
 TGACGGAGAGCCCGTTCCAGGCCACCAACGCATGAGCCTCAGCCTGCCCTCATCAACCCAGCCAAGAA
 GGTAAGTCTCTGGTTCATGGGCAGGACAAAACGTGAGATCACAACGTTGGTGAGCCGCGTGGGCCATGAA
 CCAAGAAGTGGCCATCTCAGGTGTGGTGCCTTTCTGGGCAGCTGGTTTGGTACATGGATTACGAGG
 CCTTCTGGGA

ACGCGTACGCGGCCGCTCGAGCAGAACTCATCTCAGAAGAGGATCTGGCAGCAAATGATATCCTGGATT
 ACAAGGATGACGACGATAAGGTTTAA

Protein Sequence: >MR221672 representing NM_173371
 Red=Cloning site Green=Tags(s)

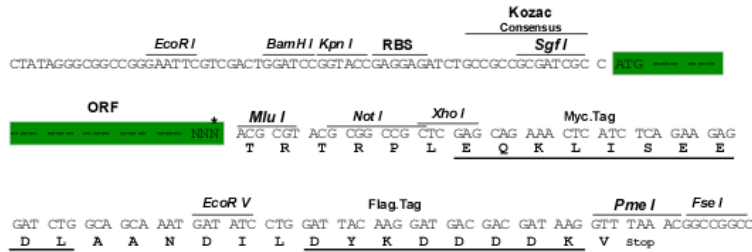
MKHTGIWKMLLAAMCLALLGCLQAQELKGHVSIILLGATGDLAKKYLWQGLFQLYLDEAGKGHSFSFHGA
 ALTAPQQGQKMDKVLESLSCPDKLVPSRCDELKGQFLQLSQYRQLKTVEDYQTLNKDIETQVQQDGLWE
 AGRIFYFSVPPFAYADIARNINSSCRPHPGAWLRVVFKEKPFQHDHLSAQQLASELGSFFQEEEMYRVDHY
 LGKQAVAQILPFRDQNRKALDGLWNRHHVERVEIILKETIDAEGRASFYEEYGVIRDITLQNHLEILTLV
 AMELPLNISSSAAVLQHKLWAFQALRGLQKSSAILGQYQAYSGQVRRELQKPDGFQSLTPTFAGVLVHID
 NLRWEGVPPFILMSGKALDERVGYVRIVFNRAYCTQSERHWVPEQSRCLPQQIIFYIGHGELGHPAILVS
 RNLFKPSLPTQWKVEVDQDQPLRFLGRPLSDYYAYRPVREQDAYSTLLSHIFHCRKESFITNLLASWV
 FWTRLLDSLAFEVPRPYPGAENGQLLDFEFSGGQLTFSQQQLEVLIPDLGSPKPSDFQVLGARYRQSP
 LITAWPEELISKLASDIEAAAVQAVRHFGKHLALSGGSSPIALFQQLATGHYSFPWAHTHLWLVDERCV
 PLSDPDSNFQGLQAHLQHVRYVYNIHPMPVHLHQRCAEEDQGAQTYASEISALVANSSFDLVLLGMG
 TDGHTASLFPQSPTGLDGDQLVVLTESPFRPHQRMSLSLPLINRAKKVAVLVMGRTKREITTLVSRVGHE
 PKKWPIISGVVPLSGQLVWYMDYEAFLG

TRTRPLEQKLISEEDLAANDILDYKDDDDKV

Restriction Sites: Sgfl-MluI

Cloning Scheme:

Cloning sites used for ORF Shuttling:



* The last codon before the Stop codon of the ORF

ACCN: NM_173371

ORF Size: 2391 bp

OTI Disclaimer: The molecular sequence of this clone aligns with the gene accession number as a point of reference only. However, individual transcript sequences of the same gene can differ through naturally occurring variations (e.g. polymorphisms), each with its own valid existence. This clone is substantially in agreement with the reference, but a complete review of all prevailing variants is recommended prior to use. [More info](#)
OTI Annotation: This clone was engineered to express the complete ORF with an expression tag. Expression varies depending on the nature of the gene.

Components: The ORF clone is ion-exchange column purified and shipped in a 2D barcoded Matrix tube containing 10ug of transfection-ready, dried plasmid DNA (reconstitute with 100 ul of water).

Reconstitution Method:

1. Centrifuge at 5,000xg for 5min.
2. Carefully open the tube and add 100ul of sterile water to dissolve the DNA.
3. Close the tube and incubate for 10 minutes at room temperature.
4. Briefly vortex the tube and then do a quick spin (less than 5000xg) to concentrate the liquid at the bottom.
5. Store the suspended plasmid at -20°C. The DNA is stable for at least one year from date of shipping when stored at -20°C.

RefSeq: [NM_173371.4](#), [NP_775547.2](#)

RefSeq Size: 4739 bp

RefSeq ORF: 2394 bp

Locus ID: 100198

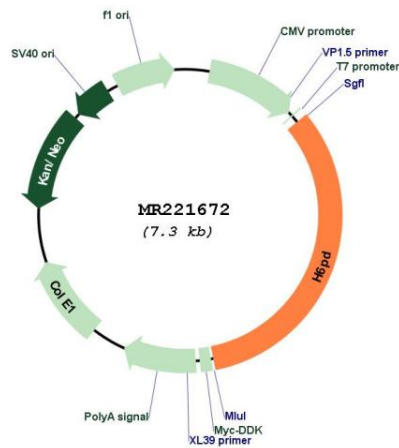
UniProt ID: [Q8CFX1](#)

Cytogenetics: 4 80.65 cM

MW: 90.4 kDa

Gene Summary: Oxidizes glucose-6-phosphate and glucose, as well as other hexose-6-phosphates. [UniProtKB/Swiss-Prot Function]

Product images:



Circular map for MR221672