

## Product datasheet for MR221610

### Atp4a (NM\_018731) Mouse Tagged ORF Clone

#### Product data:

Product Type:	Expression Plasmids
Product Name:	Atp4a (NM_018731) Mouse Tagged ORF Clone
Tag:	Myc-DDK
Symbol:	Atp4a
Mammalian Cell Selection:	Neomycin
Vector:	pCMV6-Entry (PS100001)
E. coli Selection:	Kanamycin (25 ug/mL)
ORF Nucleotide Sequence:	>MR221610 representing NM_018731 Red=Cloning site Blue=ORF Green=Tags(s)

CTATAGGGCGGCCGGGAATTCGTGCGACTGGATCCGGTACCGAGGAGATCTGCCGCCGCGATCGCCGGCCG  
GCC

ATGGGGAAGGCAGAGAATTATGAACTGTACTCAGTGGAAGTGGGGTCTGGCCCTGGTGGGGACATGACTG  
CCAAGATGAGCAAGAAGAAGGCAGGAGGTGGGGGAGGCAAGAAGAAGGAGAAGCTGGAGAACATGAAGAA  
GGAGATGGAGATTAACGACCACCAGCTATCAGTGTCTGAGCTGGAGCAGAAGTATCAGACCAGCGCCACC  
AAGGGCCTGAAGGCGAGCCTGGCAGCTGAGCTGCTGCTGAGGGATGGACCAATGCGCTCCGGCCGCTCC  
GGGCACCTCCCGAGTATGTGAAGTTTGCCCGTCAGCTGGCAGGTGGTCTGCAGTGCCTCATGTGGGTGGC  
TGCTGCTATCTGCCTCATTGCCTTTGCCATCCAGGCCAGCGAGGGTGACCTGACCACTGATGATAATCTG  
TACCTGGCGGTGGCACTCATTGCTGTGGTGTGGTCACTGGCTGTTTTGGCTACTACCAGGAGTTCAAGA  
GCACAAATATCATCGCCAGCTTCAAGAATCTTGTACCCAGCAAGCCACTGTGATCCGAGACGGGGACAA  
GTTCCAGATCAACCGGATCAGCTTGTGGTGGCGACCTGGTGGAGATGAAAGGCGGGGACCGCGTGCCA  
GCAGACATCCGCATTCTGTGAGCCAGGGCTGCAAGGTGGACAACCTCTCGCTCACTGGAGAGTCTGAAC  
CGCAGACCCGCTCGCCGAGTGTACACATGAGAGTCCCCTTGAGACCCGCAACATCGCCTCTTCTCCAC  
CATGTGTCTGGAGGAAACAGCTCAGGGTTTGGTGGTGGCAGCCGCGATCGCACCATCATTGGGCGCATC  
GCCTCGCTGGCCTCGGGTGTGAAAACGAGAAGACTCCGATTGCAATCGAGATTGAACATTTTGTGGACA  
TCATTGCCGGCCTGGCCATCCTCTCGGTGCCACATTCTTTGTGGTGGCCATGTGTATTGGCTATACCTT  
CCTTCGGGCCATGGTCTTCTTATGGCCATTGTGGTAGCCTATGTGCCTGAGGGGCTGCTGGCAACTGTC  
ACAGTCTGCCTGTCACTGACAGCAAAGAGGTTGGCCAGTAAAACTGCGTGGTAAAACTTAGAAGCAG  
TTGAGACCCTAGGTTCTACATCAGTCACTGCTCAGACAAGACAGGAAGTCTCACTCAGAACCAGTACGAC  
GGTGTCTCATCTATGGTTTGACAACCATATCCACACGGCGGACACCACAGAAGACCAGTCAAGGGCAAACG  
TTCGATCAGTCGTCGGAGACATGGCGAGCGCTGTGCCGCTGCTACCCTGTGCAACCCGCGCTGCCTTCA  
AGTCCGGCCAGGACCGGTTGCCGGTGCCTAAGCGCATCGTGATCGGAGACGCGTCAGAGACTGCGCTGCT  
CAAGTTTTCGGAGCTGACGTTGGGCAACGCCATGGGTTACAGGGACCGCTTCCCCAAAGTTTGGCGAGTC  
CCCTTCAACTCCATCAACAAGTTCCAGCTGTCCATTATACCCTGGAGGATCCACCGGACTCCCGGACCC  
TGCTGGTGTGAAGGGGCCCCCTGAGCGGTGCTGGAGCGTTGCAGCTCCATCCTCATCAAGGGCCAGGA



[View online >](#)

GCTGCCTCTGGACGAGCAATGGCGTGAGGCCTCCAGACAGCCTACCTCAGCCTGGGAGGCCTAGGCGAA  
 CGTGTTCTTGGTTTCTGCCAGCTCTACCTGAATGAGAAGGACTACCCACCTGGCTATGCCTTTGATGTGG  
 AGGCCATGAACTTCCGAGTAGTGGCCTCTGCTTTCGGGACTTGATCCATGATTGACCCTCCCGGGC  
 CACCGTTCCTGATGCTGTGCTCAAAATGCCGCACGGCAGGCATCCGGGTGATCATGGTGACCGGTGACCAT  
 CCCATCACGGCCAAGGCCATCGCAGCCAGCGTGGGTATCATCTCAGAGGGCAGCGAGACAGTGAAGACA  
 TCGCCGCCCGCTCCGGATGCCGGTGGACCAGGTTAATAGGAAGGATGCCCGGCCTGCGTATCAATGG  
 TATGCAGCTGAAGGACATGGACCCGCTGAGCTGGTGGAGGCGCTACGCACCCACCTGAGATGGTGT  
 GCTCGAACCAAGTCTCAGCAGAAGCTGGGTGCCATTGTGGCTGTAACAGGGGATGGTGTGAATGACTCCC  
 CAGCCCTGAAGAAAGCTGACATTGGTGTAGCCATGGGCATTGCTGGCTCGGATGTGCTAAAAATGCTGC  
 TGACATGATCTTGTGGATGACAACTTTGCTTCCATTGTGACAGGCGTGGAGCAGGGCCGACTGATCTTT  
 GACAACCTGAAGAAATCCATTGCATATACACTGACCAAGAACATTCCAGAACTGACACCCTACCTTATCT  
 ATACTGTGCTGCTGCCCTACCCCTTGGGTGTATCACCATTCTTTCATAGAAGTCTGCACAGATAT  
 CTTTCCATCTGTGCCCTGGCGTACGAGAAGGCTGAGAGCGACATCATGCACCTGCGCCACGGAACCT  
 AAGCGTGACCGGTTGGTCAACGAACCCCTGGCTGCTTATTCCTATTTCCAGATTGGTCCATTGAGTCA  
 TTGCCGGCTTGTGACTACTTACGGCCATGGCGCAGGAGGGCTGGTTCCTCTGTTGTGTGAGGACT  
 GCGGCCACAATGGGAGGACCACCATCTACAAGATCTTCAAGACAGCTACGCCAGGAATGGACATTTGGT  
 CAGCGCCTGTACCAGCAGTACACCTGTTACACCGTGTCTTCATCAGCATCGAGATGTGCCAGATCGCAG  
 ATGTCCCTCATCCGAAGACACGGCGCCTCTGTTTTCCAGCAGGGATTCTTCCAGAAACAAGATCCTGGT  
 GATCGCCATCGTGTCCAGGTCTGCATTGGCTGCTTCTGTGCTACTGCCAGGGATGCCTAACATCTTC  
 AACTTCATGCCCATCCGGTTCAGTGGTGGCTGGTCCCATGCCCTTCGGCTTCTCATCTTTGTCTATG  
 ATGAGATCCGAAACTTGGAGTTCGCTGTTGCCAGGGAGCTGGTGGGACCAGGAAGTCTACTAT

AGCGGACCGACGCGTACGCGGCCGCTCGAGCAGAAACTCATCTCAGAAGAGGATCTGGCAGCAAATGATATCC  
 TGGATTACAAGGATGACGACGATAAGGTTTAA

**Protein Sequence:**

>MR221610 representing NM\_018731  
 Red=Cloning site Green=Tags(s)

MGKAENYELYSVELGSGPGGDMTAKMSKKKAGGGGKKKEKLENMKKEMEINDHQLSVSELEQKYQTSAT  
 KGLKASLAAELLLRDGPNALRPPRGTPPEYVKFARQLAGGLQCLMWWAAAICLI AF AIQASEGDLTDDNL  
 YLAVALIAVVVVVTGCFGYQEFKSTNIIASFKNLVPQQATVIRDGDKFQINADQLVVGDLVEMKGGDRVP  
 ADIRILSAQGCKVDNSSLTGESEPQTRSPECTHESPLETRNIAFFSTMCLGTAQGLVVSTGDRTIIGRI  
 ASLASGVENEKTPIAIEIEHFVDIIAGLAILFGATFFVVMAMCIGYTFLRAMVFFMAIVVAYVPEGLLATV  
 TVCLSLTAKRLASKNCVVKNEAVETLSTSVICSDKTGTLTQNRMTVSHLWFDNHIHTADTTEDQSGQT  
 FDQSSETWRALCRVLTLCNRAAFKSGQDVPVVKRIVIGDASETALLKFSELTLGNAMGYRDRFPKVCEI  
 PFNSINKFQLSIHTLEDPRDSRHLVMKGAPERVLERCSSILIKGQELPLDEQWREAFQTAYLSLGGGGE  
 RVLGFCQLYLNEKYPPGYAFDVEAMNFPSSGLCFAGLVSMIDPPRATVPDAVLKCRTAGIRVIMVTGDH  
 PITAKAIAASVGIISEGSETVEDIAARLRMPVDQVNRKDARACVINGMQLKMDPSELVEALRTHPEMVF  
 ARTSPQQKLGAI VAVTGDGVNDSPALKKADIGVAMGIAGSDAAKNAADMILLDDNFASIVTGVEQGRLIF  
 DNLLKKSIAAYTLTKNIPELTPYL IYITVSVPLPLGCITILFIELCTDIFPSVSLAYEKAESDIMHLRPRNP  
 KRDRLVNEPLAAYSFYQIGAIQSFAGFADYFTAMAQEGWFPLLCVGLRPQWEDHHLQDLQDSYQEWTFG  
 QRLYQQYTCYTVFFISIEMCQIADVLIRKTRRLSVFQQGFFRNKILVIAIVFQVCIGFCFCYCPGMPNIF  
 NFMPIRFQWWLVPMPFGLLIFVYDEIRKLGVRCCPGSWWDDQELYY

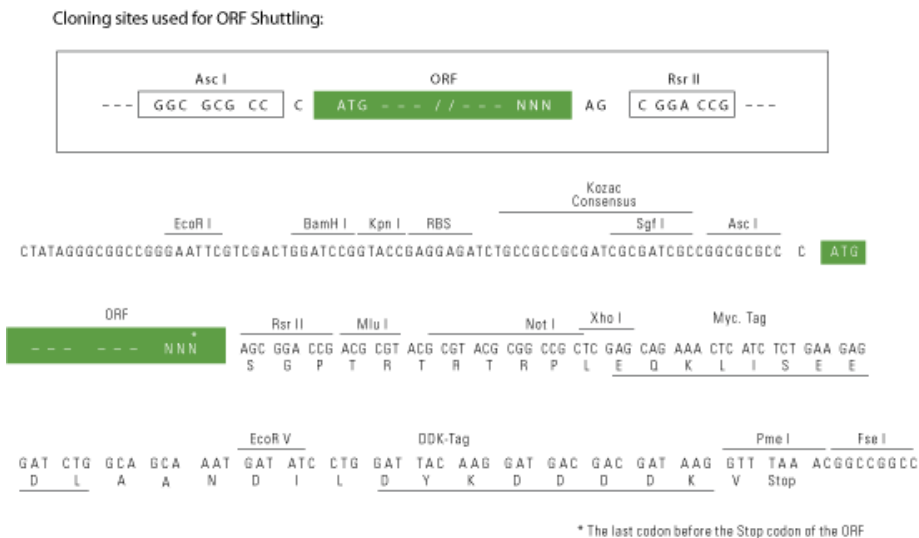
SGPTRRTRPLEQKLI SEEDLAANDILDYKDDDDKV

**Chromatograms:**

[https://cdn.origene.com/chromatograms/mm9012\\_b05.zip](https://cdn.origene.com/chromatograms/mm9012_b05.zip)

**Restriction Sites:**

Ascl-RsrII

**Cloning Scheme:**


**ACCN:** NM\_018731

**ORF Size:** 3075 bp

**OTI Disclaimer:** The molecular sequence of this clone aligns with the gene accession number as a point of reference only. However, individual transcript sequences of the same gene can differ through naturally occurring variations (e.g. polymorphisms), each with its own valid existence. This clone is substantially in agreement with the reference, but a complete review of all prevailing variants is recommended prior to use. [More info](#)

**OTI Annotation:** This clone was engineered to express the complete ORF with an expression tag. Expression varies depending on the nature of the gene.

**Components:** The ORF clone is ion-exchange column purified and shipped in a 2D barcoded Matrix tube containing 10ug of transfection-ready, dried plasmid DNA (reconstitute with 100 ul of water).

**Reconstitution Method:**

1. Centrifuge at 5,000xg for 5min.
2. Carefully open the tube and add 100ul of sterile water to dissolve the DNA.
3. Close the tube and incubate for 10 minutes at room temperature.
4. Briefly vortex the tube and then do a quick spin (less than 5000xg) to concentrate the liquid at the bottom.
5. Store the suspended plasmid at -20°C. The DNA is stable for at least one year from date of shipping when stored at -20°C.

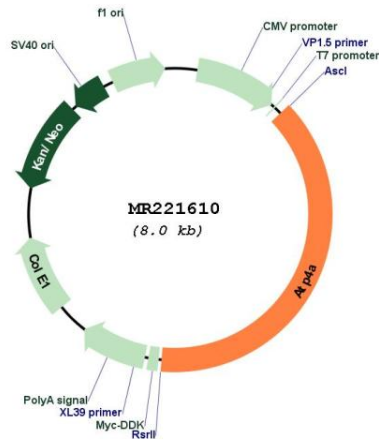
**RefSeq:** [NM\\_018731.3](#), [NP\\_061201.2](#)

**RefSeq Size:** 3447 bp

**RefSeq ORF:** 3078 bp

Locus ID: 11944  
 Cytogenetics: 7 19.2 cM  
 MW: 113.5 kDa

**Product images:**



Circular map for MR221610