

Product datasheet for MR221561

Pax4 (NM_001159926) Mouse Tagged ORF Clone

Product data:

Product Type:	Expression Plasmids
Product Name:	Pax4 (NM_001159926) Mouse Tagged ORF Clone
Tag:	Myc-DDK
Symbol:	Pax4
Synonyms:	Pax-4
Mammalian Cell Selection:	Neomycin
Vector:	pCMV6-Entry (PS100001)
E. coli Selection:	Kanamycin (25 ug/mL)
ORF Nucleotide Sequence:	>MR221561 ORF sequence Red=Cloning site Blue=ORF Green=Tags(s)

TTTTGTAATACGACTCACTATAGGGCGGCCGGAATTCGTCGACTGGATCCGGTACCGAGGAGATCTGCC
GCC**CGATCGCC**

ATGCAGCAGGACGGACTCAGCAGTGTGAATCAGCTAGGGGGACTCTTTGTGAATGGCCGGCCCTTCCTC
TGGACACCAGGCAGCAGATTGTGCAGCTAGCAATAAGAGGGATGCGACCCTGTGACATTTACGGAGCCT
TAAGGTATCTAATGGCTGTGTGAGCAAGATCCTAGGACGCTACTACCGCACAGGTGTCTTGAACCCAAG
TGTATTGGGGGAAGCAAACCACGTCTGGCCACACCTGCTGTGGTGGCTCGAATTGCCAGCTAAAGGATG
AGTACCCTGCTCTTTTTGCCTGGGAGATCCAACACCAGCTTTGCACTGAAGGGCTTTGTACCCAGGACAA
GGCTCCCAGTGTGCCTCTATCAATCGAGTACTTCGGGCACTTCAGGAAGACCAGAGCTTGCACTGGACT
CAACTCAGATCACCAGCTGTGTTGGCTCCAGTTCTTCCCAGTCCCACAGTAACTGTGGGGCTCCCCGAG
GTCCCCACCCAGGAACCAGCCACAGGAATCGGACTATCTTCTCCCCGGGACAAGCCGAGGCACTGGAGAA
AGAGTTTCAGCGTGGGCAGTATCCAGATTCAGTGGCCCGTGGGAAGCTGGCTGCTGCCACCTCTCTGCCT
GAAGACACGGTGGGGTTTGGTTTTCTAACAGAAGAGCCAAATGGCGCAGGCAAGAGAAGCTGAAATGGG
AAGCACAGCTGCCAGGGATCATCTCTGCACAGCAGTCCCCGGCAGTGTACCCTCAGTGCCTTGCCTGT
GCTGGAACCATGAGTCTTCTCTGTGCTAGCTATGCTGTGGGACAGCACCAGGCAGATGTTCCAGTGAC
ACCTCATCCCAGGCCTATCTCCAACCTACTGGGACTGCCAATCCCTCCTCTGTGGCTTCTCCTCAT
ATGTGGAATTTGCCTGGCCCTGCCTCACCACCCATCCTGTGCATCATCTGATTGGAGGCCAGGACAAGT
GCCATCAACCCATTGCTCAAACCTGGCCA

ACGCGTACGCGGCCGCTCGAGCAGAACTCATCTCAGAAGAGGATCTGGCAGCAATGATATCCTGGATT
ACAAGGATGACGACGATAAGGTTTAA



[View online »](#)

Protein Sequence: >MR221561 protein sequence
Red=Cloning site Green=Tags(s)

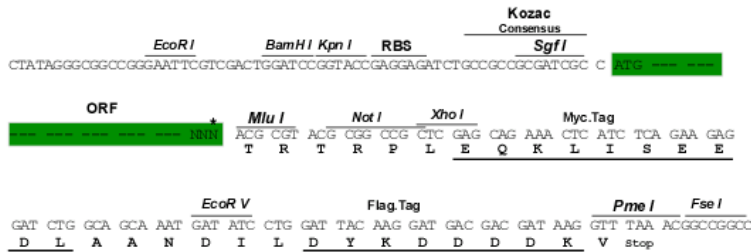
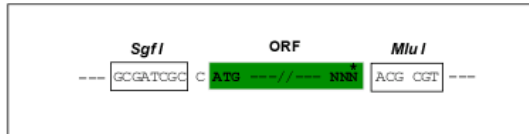
MQQDGLSSVNQLGGLFVNGRPLPLDTRQQIVQLAIRGMRPCDISRSLKVSNGCVSKILGRYYRTGVLEPK
 CIGGSKPRLATPAVVARIAQLKDEYPALFAWEIQHQLCTEGLCTQDKAPSVSSINRVLRALQEDQSLHWT
 QLRSPAVLAPVLPSPHSNCGAPRGPHPGTSHRNRTIFSPGQAEALEKEFORGQYPDSVARGKLAATSLP
 EDTVRVWF SNRRAKWRRQEKLKWEAQLPGIISAQQSPGSVPSAALPVLEPLSPSFCQLCCGTAPGRCSSD
 TSSQAYLQPYWDCQSLLPVASSSYVEFAWPCLTTHPVHHLIGGPGQVPSTHCSNWP

TRTRPLEQKLISEEDLAANDILDYKDDDDKV

Restriction Sites: SgfI-MluI

Cloning Scheme:

Cloning sites used for ORF Shuttling:



* The last codon before the Stop codon of the ORF

ACCN: NM_001159926

ORF Size: 1011 bp

OTI Disclaimer: The molecular sequence of this clone aligns with the gene accession number as a point of reference only. However, individual transcript sequences of the same gene can differ through naturally occurring variations (e.g. polymorphisms), each with its own valid existence. This clone is substantially in agreement with the reference, but a complete review of all prevailing variants is recommended prior to use. [More info](#)

OTI Annotation: This clone was engineered to express the complete ORF with an expression tag. Expression varies depending on the nature of the gene.

Components: The ORF clone is ion-exchange column purified and shipped in a 2D barcoded Matrix tube containing 10ug of transfection-ready, dried plasmid DNA (reconstitute with 100 ul of water).

Reconstitution Method:

1. Centrifuge at 5,000xg for 5min.
2. Carefully open the tube and add 100ul of sterile water to dissolve the DNA.
3. Close the tube and incubate for 10 minutes at room temperature.
4. Briefly vortex the tube and then do a quick spin (less than 5000xg) to concentrate the liquid at the bottom.
5. Store the suspended plasmid at -20°C. The DNA is stable for at least one year from date of shipping when stored at -20°C.

RefSeq: [NM_001159926.1](#), [NP_001153398.1](#)

RefSeq Size: 1336 bp

RefSeq ORF: 1008 bp

Locus ID: 18506

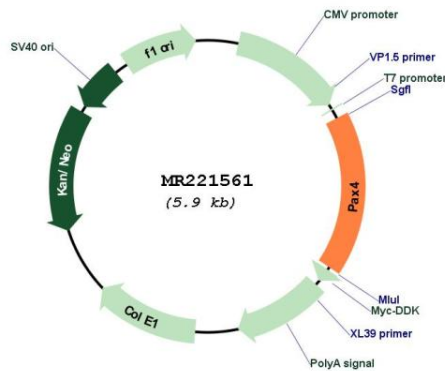
UniProt ID: [P32115](#)

Cytogenetics: 6 11.99 cM

MW: 36.7 kDa

Gene Summary: Plays an important role in the differentiation and development of pancreatic islet beta cells. Transcriptional repressor that competes with PAX6 in binding to a common element in the glucagon, insulin and somatostatin promoters.[UniProtKB/Swiss-Prot Function]

Product images:



Circular map for MR221561