

## Product datasheet for MR221559

### Pax4 (NM\_001159925) Mouse Tagged ORF Clone

#### Product data:

Product Type:	Expression Plasmids
Product Name:	Pax4 (NM_001159925) Mouse Tagged ORF Clone
Tag:	Myc-DDK
Symbol:	Pax4
Synonyms:	Pax-4
Mammalian Cell Selection:	Neomycin
Vector:	pCMV6-Entry (PS100001)
E. coli Selection:	Kanamycin (25 ug/mL)
ORF Nucleotide Sequence:	>MR221559 representing NM_001159925 Red=Cloning site Blue=ORF Green=Tags(s)

TTTTGTAATACGACTCACTATAGGGCGCCGGGAATTCGTCGACTGGATCCGGTACCGAGGAGATCTGCC  
GCC**CGGATCGCC**

ATGCAGCAGGACGGACTCAGCAGTGTGAATCAGCTAGGGGGACTCTTTGTGAATGGCCGGCCCTTCCTC  
TGGACACCAGGCAGCAGATTGTGCAGCTAGCAATAAGAGGGATGCGACCCTGTGACATTTACGGAGCCT  
TAAGGTATCTAATGGCTGTGTGAGCAAGATCCTAGGACGCTACTACCGCACAGGTGTCTTGAACCCAAG  
TGTATTGGGGGAAGCAAACCACGTCTGGCCACACCTGCTGTGGTGGCTCGAATTGCCAGCTAAAGGATG  
AGTACCCTGCTCTTTTTGCCTGGGAGATCCAACACCAGCTTTGCACTGAAGGGCTTTGTACCCAGGACAA  
GGTCCCAGTGTGCTCTATCAATCGAGTACTTCGGGCACTTCAGGAAGACCAGAGCTTGCACTGGACT  
CAACTCAGATCACCAGCTGTGTTGGCTCCAGTTCTTCCCAGTCCCCACAGTAACTGTGGGGCTCCCCGAG  
GTCCCCACCCAGGAACCAGCCACAGGAATCGGACTATCTTCTCCCCGGGACAAGCCGAGGCACTGGAGAA  
AGAGTTTCAGCGTGGGCAGTATCCAGATTCAGTGGCCCGTGGGAAGCTGGCTGCTGCCACCTCTCTGCC  
GAAGACACGCTGAGGGTTTGGTTTTCTAACAGAAGAGCCAAATGGCGCAGGCAAGAGAAGCTGAAATGGG  
AAGCACAGCTGCCAGGGATCATCTGTCACAGCAGTCCCCGGCAGTGTACCCTCAGTGCCTTGCCTGT  
GCTGGAACCATGAGTCTTCTCTGTGTCAGCTATGCTGTGGGACAGCACCAGGCAGATGTTCCAGTGAC  
ACCTCATCCCAGGCCTATCTCCAACCTACTGGGACTGCCAATCCCTCCTCCTGTGGCTTCTCCTCAT  
ATGTGGAATTTGCCTGGCCCTGCCTCACCACCCATCCTGTGCATCATCTGATTGGAGGCCAGGACAAGT  
GCCATCAACCCATTGCTCAAACCTGGCCA

**ACGCGT**ACGCGGCCGCTCGAGCAGAACTCATCTCAGAAGAGGATCTGGCAGCAAATGATATCCTGGATT  
ACAAGGATGACGACGATAAGGTTTAA



[View online »](#)

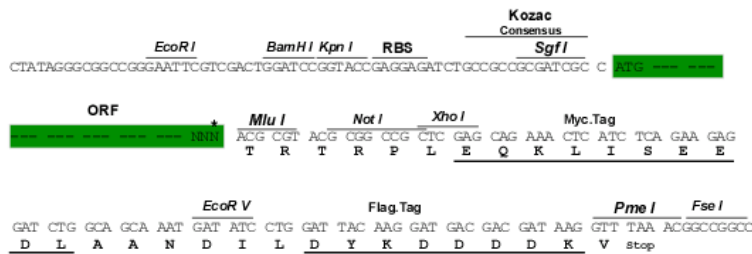
**Protein Sequence:** >MR221559 representing NM\_001159925  
Red=Cloning site Green=Tags(s)

MQQDGLSSVNQLGGLFVNGRPLPLDTRQQIVQLAIRGMRPCDISRSLKVSNGCVSKILGRYYRTGVLEPK  
 CIGGSKPRLATPAVVARIAQLKDEYPALFAWEIQHQLCTEGLCTQDKAPSVSSINRVLRALQEDQSLHWT  
 QLRSPAVLAPVLPSPHSNCGAPRGPHPGTSHRNRTIFSPGQAEALEKEFORGQYPDVARGKLAATSLP  
 EDTVRVWF SNRRAKWRRQEKLKWEAQLPGIISAQQSPGSVPSAALPVLEPLSPSFCQLCCGTAPGRCSSD  
 TSSQAYLQPYWDCQSLLPVASSSYVEFAWPCLTTHPVHHLIGGPGQVPSTHCSNWP

TRTRPLEQKLISEEDLAANDILDYKDDDDKV

**Restriction Sites:** SgfI-MluI

**Cloning Scheme:**



\* The last codon before the Stop codon of the ORF

**ACCN:** NM\_001159925

**ORF Size:** 1008 bp

**OTI Disclaimer:** The molecular sequence of this clone aligns with the gene accession number as a point of reference only. However, individual transcript sequences of the same gene can differ through naturally occurring variations (e.g. polymorphisms), each with its own valid existence. This clone is substantially in agreement with the reference, but a complete review of all prevailing variants is recommended prior to use. [More info](#)

**OTI Annotation:** This clone was engineered to express the complete ORF with an expression tag. Expression varies depending on the nature of the gene.

**Components:** The ORF clone is ion-exchange column purified and shipped in a 2D barcoded Matrix tube containing 10ug of transfection-ready, dried plasmid DNA (reconstitute with 100 ul of water).

**Reconstitution Method:**

1. Centrifuge at 5,000xg for 5min.
2. Carefully open the tube and add 100ul of sterile water to dissolve the DNA.
3. Close the tube and incubate for 10 minutes at room temperature.
4. Briefly vortex the tube and then do a quick spin (less than 5000xg) to concentrate the liquid at the bottom.
5. Store the suspended plasmid at -20°C. The DNA is stable for at least one year from date of shipping when stored at -20°C.

**RefSeq:** [NM\\_001159925.1](#), [NP\\_001153397.1](#)

**RefSeq Size:** 1339 bp

**RefSeq ORF:** 1011 bp

**Locus ID:** 18506

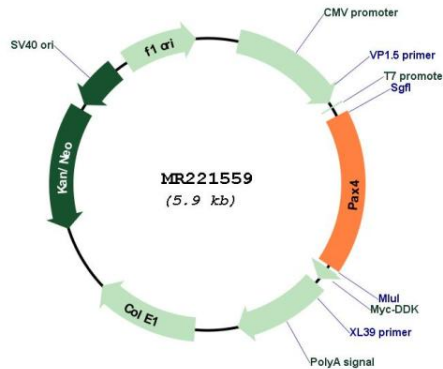
**UniProt ID:** [P32115](#)

**Cytogenetics:** 6 11.99 cM

**MW:** 37.2 kDa

**Gene Summary:** Plays an important role in the differentiation and development of pancreatic islet beta cells. Transcriptional repressor that competes with PAX6 in binding to a common element in the glucagon, insulin and somatostatin promoters.[UniProtKB/Swiss-Prot Function]

**Product images:**



Circular map for MR221559