

Product datasheet for MR221511

Wnk1 (NM_198703) Mouse Tagged ORF Clone

Product data:

Product Type:	Expression Plasmids
Product Name:	Wnk1 (NM_198703) Mouse Tagged ORF Clone
Tag:	Myc-DDK
Symbol:	Wnk1
Synonyms:	6430573H23Rik; EG406236; Hsn2; mKIAA0344; Prkwk1
Mammalian Cell Selection:	Neomycin
Vector:	pCMV6-Entry (PS100001)
E. coli Selection:	Kanamycin (25 ug/mL)
ORF Nucleotide Sequence:	>MR221511 representing NM_198703 Red=Cloning site Blue=ORF Green=Tags(s)

TTTTGTAATACGACTCACTATAGGGCGGCCGGAATTCGTCGACTGGATCCGGTACCGAGGAGATCTGCC
GCC**CGATCGCC**

ATGTCTGACGGTGCCGCCGAGAAGCAAAGCGGCACTCCGGGCTTCCTTACGCCTCCGGCGCCCGTCCCCA
AGAATGGCTCAAGCTCCGATTCTCCGTGGGCGAGAACTGGGGCTACGGTCGCCGACTCGGGAGTTGG
CAGGACGGAGGAATATCGGCGCCGCCGACACTATGGACAAGGACAGTCGTGGGCGGCCGCCACCACC
ACCCCCACGGAGCACCGATTCTCCGCCAAGCGTCATCTGCGACTCCAATGCCACCGCCTTGGAGCTGC
CGGGCCTCCCTCTCTATCCCACAACCTAGTGTACCTGCAGTGGTGCCCCAGAGTGCTCCACCCGAACC
TCACAGAGAGGAACTTTGACCGCCACCGTTGCTTCCCAGGTGTCTCAGCAACCCTCGGTCTGCCTCC
CCTGGGGAACAAGCCGTTGTAGGCTCGGCCACCACGACCGTCCCCAGCAGTACCAGCAAAGACCGCCCGG
TGTCCCAGCCCAGCCTCGTGGGAGCAAAGAGGAGCCACCGCCGTCAGAAAGTGGAGTGGCAGTGGTGG
CGCCAGCGCCAAAGAGGCGCAGGAGGATAGGAGCCAGCAACAGGATGATATCGAAGAGCTGGAGACCAAG
GCAGTGGGAATGTCCAATGACGGTCGTTTTCTCAAATTTGACATCGAAATCGGCAGAGGCTCCTTTAAGA
CAGTCTACAAAGGTCTGGACACCGAAACCACTGTGGAAGTCGCCTGGTGTGAATTGCAGGATCGAAAGTT
AACAAAATCTGAAAGGCAGAGATTCAAAGAAGAGGCTGAAATGTTAAAGGCTCTCAACATCCCAACATT
GTTTCGATTCTATGATTCCTGGGAATCCACAGTAAAAGGGAAAAAATGCATTGTTTTAGTGACTGAACTAA
TGACATCTGGAACACTTAAGACGTACTTAAAAAGGTTTTAAAGTGATGAAAATCAAAGTTTTAAGAAGCTG
GTGTCGGCAAATCCTTAAAGGGCTTCAGTTTTCTCCACACACGAACTCCACCAATTATTCACCGGGATCTT
AAATGTGACAACATCTTTATCACTGGTCTACTGGCTCAGTCAAGATCGGAGACCTTGGTCTGGCAACTC
TAAAGCGGGCTTCTTTGCCAAGAGTGTGATAGGTACCCAGAGTTTATGGCTCTGAGATGTATGAGGA
GAAATATGATGAATCCGTTGATGTTTATGCTTTTGGGATGTGCATGCTTGAGATGGCTACATCTGAATAT
CCATACTCAGAATGCCAAAATGCTGCGCAGATCTACCGTCGAGTGACCAGTGGAGTGAAGCCAGCCAGTT
TTGACAAAAGTAGCAATTCCTGAAGTAAAAGAAATTATTGAAGGATGTATCCGACAAAACAAGATGAAAG
ATATTCATCAAAGACCTTTTGAACCATGCCTTTTCCAGGAGGAAACAGGGGTACGGGTAGAATTAGCA



[View online »](#)

GAAGAAGATGATGGAGAAAAGATAGCTATTAATTTATGGCTGCGTATTGAAGATTAAGAAATTAAGG
 GAAATACAAAGACAATGAAGCTATTGAGTTTTCTTTGACTTGGAGAGGGATGTACCAGAAGATGTTGC
 TCAAGAAATGGTTGAGTCTGGTTATGTCTGTGAAGGTGATCACAAGACCATGGCTAAAGCTATCAAAGAT
 AGGGTGTCTTAATTAAGAGAAAACGAGAGCAGCGGCAGTTGGTTCGAGAAGAGCAAGAAAAAGAAAAC
 AAGAAGAGAGCAGTTTCAAACAGCAGAATGAACAACAAGCAAGCGTTTCCCAGGCAGGAATCCAGCAGCT
 CTCTGTGCTAGCACTGGCATACCCACTGCTCCTGCCACCTCTGCTTCAGTTTCTACACAGGTAGAACCT
 GAAGAACCTGAGGCAGATCAACATCAACAGCTGCAATATCAGCAACCTAGTATATCTGTGTTGTCTGATG
 GAACCATTGATAGTGGTCAAGGATCATCCGTATTCACAGAATCCAGAGTGAGCAGCCAACAGACTGTTTC
 CTATGGTTCCCAACATGAGCAGGCACATTCTACTGGCACAGCACCAGGACATACAGTTTCTAGTATCCAA
 GCACAATCTCAGCCCATGGGGTGTATCCACCCTCAAGTATGGCACAGGGGCAGAACAGGGCCAGCCAT
 CAAGTAGTTTGGCTGGGGTCTATCTTCACAACCTATCCAACATCCTCAGCAGCAGGGAATACAGCCAAC
 TGTTCTTCTCAACAGGCAGTACAGTATCACTTCCACAAGCAGCATCTCCAGTGAAGTACTACTGCA
 CAGCCAGTGAGTCAGCCTCAAGTGTGAGCTGGAACACAGCTTCCAGTTTCCCAGACAGTAGCAACTGTCC
 AAGGTGAACCTCACATCCAGTTTCAACACAACCCTCAGTTGTTCCAGTCCACTCTGGTGTCTATTTCT
 TCCTATGGGACAGCCAATCCCTACTTCTTACTCCACAGTATCCTGTCTCTCAAATCCCATATCGACT
 CCTCATGTGTCCAGGCCGACAGGTTTCTCATCCGTTCTATAACAATGGCTGCTGGCATTAAACCAGC
 CTCTGCTCACCTTGGCTTCTGCTACAGCATCTTCAATCCCAGGGGGATCACCTGTAGTTCCTAATCA
 GCTTCAAATCTTCTGCAGCCTGTGAATCAGCTGCAGAGTCAAGTTCACCCACAGCTTCTACAGCCAACA
 ACAGTTCAGTCCATAGGAATACCAGTAACCTTGGACAAGCTGCTGAGGGTCCACTTCCCTCTGGAGATG
 TTTTGTACCAGGGCTTCCCATCTCGACTGCCACCACAATACCCAGGAGATTCAAATATTGCTCCCTTTC
 CAACGTGGCTTCTGTTTGCATCCATTCTACAGTCTAGCCCTCCTTCTATGCCGACAGAAGCATTGGCC
 ACCCAAGTTACTTCTACAGTAGTGCAGCCTTATGTGGAATCAACTCCTTGGTTCTATGGGCAGTG
 TAGGAGGCCAGGTTCAAGTGTCCCAACCCAGCAGTGAAGTTAACGCAACAACCCCAACTACATCTCCCA
 GCAAGCAGTTCTGGAGAGTACTCAGGGAGTCTCTCAGGCTGCTCCTCCAGAACAACCTCCAATAACACAG
 TCAACAACCTACTCAGCCTGTTCCATTGGTTACCTCTGCAGACAGTGCACATTAGACGTTGCTTCTGGTA
 TGAGTGATGGCAATGAGAATGCTCCATCATCCAGCGGGAGGCATGAAGGGAGGACAACAACAAACGGCATT
 TAGAAAATCCGTAAGAAGTGCCTCTCGGCATGAAAAGACTTCTCGCCAAAACCTGAGGATTTTAAATGTT
 TCAAATAAAGGAGACCGAGTAGTAGAATGTCAATTAGAGACTCATAATCGGAAGATGGTTACATTTAAAT
 TTGACCTAGATGGTGACAACCCTGAAGAGATAGCAACAATTATGGTGAACAATGACTTTATTCTAGCAAT
 AGAGAGAGAGTCTTTTGGCTCAAGTGCAGGAAATTTGAAAAGGCTGATGAAATGTTAAGTGAGGAT
 GTCAGTGTGGAGCCTGAGGGTGACCAGGATTGGAGAGTCTGCAAGGAAAGGATGACTATGGCTTCCAG
 GTTCTCAGAAAATAGAAGGAGAGTTCAAGCAACCAATTGCTGTATCTCCATGCCACAACAATAGGTGT
 TCCTACAGTTCTTTAACGCAAGTTGTTCAATCTGCTGGAAGACGTTTATAGTGAGTCTGTACCTGAA
 AGTAGGTTACGAGAATCAAAAGTTTTACCAGTGACATATCAGATCCAGTTGTGGCCTCTACATCTCAGG
 CCCCTGGAATGAATTTACTCTCACTCTGCTTCACTCCCTCAGTCTCCAGCAGGCTTTTTCTGAACTGAAACA
 TGGTCAGATGACTGAAGGACCCAATACAGCACCTCCAAATTTTAAATCACATGGCGGGACCAACATTTTCT
 CCCTTTTTGGCTAGCATTGCTGGTGTCCAACTGTAGCAGCATCCACACCGTCAGTATCAGTCCCTATAA
 CAAGCAGTCTCTTAATGACATTTCCACATCAGTGTGAGTCTGAGACTGCACTGCCACTGAAAAGG
 CATCGTGGGAGTTACCACTACCAGCACAGGTGTGGTAGCTTCAAGTGGTCTCACCACAATGTCTGTGTCT
 GAGTCACCAACATCTTCCAGTCCGTTTCAAGTTCTACAGTACCTGCAGTTGTCACTGTGTCACACCAT
 CCCAGCCAGTTCAAGGCTTCCACATCTGGGAGCATTGCTTCAAGTACAGGCAGTTTTCTCCTGGAACATT
 TTCTACAACCTACAGTACTACAATGGGTAGTGTGGTGGCCCCAGATGCTAAGCCTCCAAGTATTATTG
 CAACAGGTAGCAAGCAATACTGCTGGGGTGGCCATAGTGACATCAGTCTTACCACCCTCCATTCCCAG
 GCATGGCTTACAGCCATCCCTTCCACTAGTAGCAGCACCTCTGCTCCTACTCTAGCTGAAACAATGGT
 GGTTAGTGCACTCACTAGACAAGGCATCTCACAGTAGTACAGCAGGATTGGGTTTGCCTTTTGTGCG
 CCATCCTCTTCTCCTCTGGAACAGCTGTGTACTTCTGTTTCTCAGCCTGGTATGGTTCATCCTT
 TGGTCATCTCATCAGCTGTAGTTTCTACACCTGGCCTCCCCAACAGTAGTACCTACTTCTACACCTTT
 ATTACCCAAGTACCTAATATCCCACCCTTGGTACAACCTGTTGTTAATGTGCCTGCTGTACAGCAACA
 CTCATTACAGTCAAGCCTCAACAGCTCTGCTTCCCAACAGCCTCACACACACTGCTCTGAAATGGATG
 CTGATACCCAATCCAAAGCTCCTGGGATTGATGATATAAAGACTCTGGAGGAAAAGCTGAGATCTCTCT
 TAGTGAACACAGCTCATCTGGAACCTCAGCATGCTTCTGTCTCCCTAGAGACACCTTTAGTAGTAGAGACG
 ACTGTCACACCGGCATCACTACCAGTGTAGCACCAAGTAACTCATGACTTCCACTACAAGTACTT

GCTTACCACCAACCAGTTTACCATTAGGAGCAGCTGGCATGCCAGTTATGCCAGTAGGCACACCTGGGCA
GGTTTCTACCCAGGCACACACGCTTCAGCCCCAGTCGGCACTGCAACAGGAGTAAAACCTGGAACAACT
CCCCAAAGCCAACTAAGACTGTGGTGCCACCAGTGGGTACTGAACTTTCAGCCGGTACTGTACCCTGTG
AGCAGCTGCCACCTTTTCTGGACCTTCTAATTTCAGTCCCAGCAACCACTAGAAGATCTTGATGCTCA
GTTGAGAAGAACACTTAGTCCAGAGACTATTACAGTGGCACCTGCAGTTGGTCTTTGTCTACGATGTCT
TCAACAACAGTTACAGAAGCAGGGACTCGGCTTCAAAGGATGGCACAGAAGGTCATGTCCAGCAACTA
GTTCAGGAGCTGGTGTGTTAAGATGGGGCGATTTTCAGTTCAGTTACAATGGATGATGCCAGAAAGA
ACGTAAAAATAGGTCAGAAGATACAAAGTCGGTTCATTTTGAATCTAGCACATCAGAGTCATCAGTTCTT
TCAAGTAGTAGTCCAGAGAGTACCCTGGTAAAGCCAGAGCCTAATGGAATTAGTATTTCTGGCATCTCCT
TAGATGTCCAGACAGCACCCACAAAGCACCTACCCAGAAAGCAAGTCAGATGCAGGACAGCCTACCAA
GGTGGGACGTTTTTCAGGTGACAACTACAGCCAACAAAGTGGTTCGTTTCTGTTTCAAGAACTGAGGAC
AAGGTCACAGAGCTCAAAAAGAGGGACCAGTGACCTCTCCTCTTTCAGAGATTCAGAACAACTGTTA
TTCCTGCTGTGATACAAAGAAGGAGAAGCCTGAGCTGGCAGAACCTTCCATTTGAATGGGCCATCTTC
AGACCTGGAGGCTGCCTTCTAAGTAGGGGTACAGAGGATGGCTCAGGTAGTCCACACTCTCCCCCTCAC
CTGTGTTCAAAGAGCCTTCCCGTCCAGAATCTAAGTCAAAGCCTTAGTAATTCATTCAACTCCTCATACA
TGAGTAGTGACAATGAGTCCGACATTGAAGATGAAGACTTAAGGTTAGAATACGACGACTACGAGAAAA
ACATCTTAAAGAGATTCAGGACCTGCAGAGTCGCCAGAAGCATGAAATTGAATCTTTGTATACTAAACTG
GGCAAGGTTCCCCCTGCTGTCTATTATCCCCAGCTGCTCCTCTGTGCGGGAGAAGAAGGAGACCCACTA
AAAGCAAAGGCAGCAAGTCTAGTCGCAGCAGCTCATTGGGCAATAAAAGCCCACAGCTTTCAGGCAACCT
GTCTGGTCAGAGTGGAATTCAGTCTTACACCCCAACAGACCCTCCATCCCGCAGGAAACACCCCGAG
ACTGGGCAACAACCAGCTGTTACAGCCTCTAAGCCATCTCCCTCCAGTGACAACCTCTATTACGCTTTA
CCAGTGATGGTGCCATTTTCAGTACCAAGCCTTCTGCTCCAGGTCAAGGGACCAGCAGCACAATACCGT
TGGAGGAACAGTGAGTAGCCAGGCTGCCAGGCTCAGCCTCCTGCTATGACTTCCAGTAGGAAGGGCACA
TTCACAGATGACCTGCACAAGTTAGTAGACAACCTGGGCCGAGATGCCATGAATCTTTCAGGCAGGAGAG
GCAGCAAAGGACACATGAATTATGAGGGCCTGGAATGGCAAGGAAGTTCTCTGCTCCTGGGCAGCTGTG
TGTTCCCATGACCTCAAACCTGGGTGGTCTACCCCCATCTGTCAGCATCTGCTACCTCTTAGGTCAC
TTCACCAAATCCATGTGTCCCCACAGCAGTATGGTTTTCCACCTGCCCATTTGGCACTCAGTGGAGTG
GAACAGGTGGTCCAGCACCGCAGCCACTTGGCCAGTTCCAACCTGTAGGAACAGCATCCTTGCAAAATTT
CAACATCAGCAATTTGCAGAAGTCCATCAGCAACCCCCAGGTTCCAATCTACGGACCACC

ACGCGTACGCGGCCGCTCGAGCAGAACTCATCTCAGAAGAGGATCTGGCAGCAAATGATATCCTGGATT
ACAAGGATGACGACGATAAGGTTTAA

Protein Sequence: >MR221511 representing NM_198703
 Red=Cloning site Green=Tags(s)

```

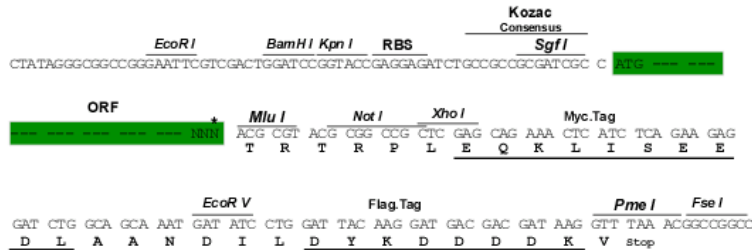
MSDGAAEKQSGTPGFLTPPAPVPKNGSSSDSSVGEKLGATVADSGVGRTEEYRRRRHTMDKDSRGA AAT
TPTEHRFFRRSVICDSNATALELPGLPLSIPQPSVPAVVPQSAPPEPHREETLTATVASQVSQQPSAAAS
PGEQAVVGSATTTVPSSTSKDRPVSQPSLVGSKEPPPSRSGSGGASAKAEQEDRSQQDDIEELETK
AVGMSNDGRFLKFDIEIGRGSFKTVYKGLDTETTVEVAVCELQDRKLTKSERQRFKEEAEMLKGLQHPNI
VRFYDSWESTVKGKCIVLVTELM TSGTLKTYLKRKVMKIKVLRSWCRQILKGLQFLHTRTPPIIHRDL
KCDNIFITGPTGSVKIGDLGLATLKRASFASVIGTPEFMAPEMYEEKYDESVDVYAFGMCMLEMATSEY
PYSECQNAAQIYRRVTSVGVKPAFDKVAIPEVKEIEGCI RQNKDERYSIKDLLNHAFQEEETGVRVELA
EEDDGEKIAIKLWLRIEDIKKLGKYKDNEAIEFSFDLERDVPEDVAQEMVESGYVCEGDHKTMAKAIKD
RVSLIKRKRQRQLVREEQEKRKQEESFKQNEQQASVSQAGIQQLSAASTGIPTAPATSASVSTQVEP
EEPEADQHQQLYQQPSISVLSDGTIDSGQGSSVFTESRVSSQQT VSYGSQHEQAHSTGTAPGHTVSSIQ
AQSQPHGVYPPSSMAQGNQGNQSSLAGVLSQPIQHPQQQGIQPTVPSQQAVQYSLPQAASSSEGTTA
QPVSQPQVSAGTQLPVSTVATVQGEPIPVSTQPSVVPVHSGAHFLPMGQPIPTSLLPQYPVSIPIST
PHVSTAQTGFSSVITMAAGINQPLLTLASSATASSIPGSGSPVVPNQLPTLLQPVNQLQSQVHPQLLQPT
TVQSIGIPANLQAAEGPLPSGDVLYQGFP SRLPPQYPGDSNIAPSSNVASVCIHSTVLAPP SMPTEALA
TQGYFPTVVQPYVESTPLVPMG SVGGQVQVSPAVSLTQQPPTSSQAVLESTQGVSAAPPEQTPITQ
SQPTQPVPLVTSADSAHSDVASGMSDGNENAPSSSGRHEGRTTKRHYRKS VRSR SRHEKTSRPKLRILNV
SNKGDRVVEQCLETHNRKMVTFKFDLDGDNPEE IATIMVNNDFILAIERESFVAQVREIEKAD EMLSED
VSVEPEGDQGLESLQKDDYGFPGSQKLEGEFKQPIAVSSMPQQIGVPTSSLTQV VHSAGRRFIVSPVPE
SRLRESKVF TSDISDPV VASTSQAPGMNLSHSASSLSLQAFSELKHGQMTEGPNTAPPNFNHMAGPTFS
PFLASIAGVQTVAASTPSVSVPI TSSPLNDI STSVMQSETALPTEKIGVGVTTTSTGVVASGGLTTMSVS
ESPTSSSAVSSSTVPAVTVSTPSQP VQASTSGS IASSTGSFPPGTFSTTTATTMGSVVAPDAKPPTVLL
QQVASNTAGVAIVTSVSTTTPFGMASQPSLPLSSS TSAPTLAETMVVSAHSLDKASHSSTAGLGLS FCA
PSSSSSSTGAVSTSVSQPGMVHPLVISSAVVSTPGLPQP VVPTSTPLLPQVNIPLLVQPVVNPVAVQQT
LIHSQPQPALLPNQPHTHCPEMDADTQSKAPGIDDIKTLEEKLRSLFSEHSSSGTQHASVLETPLVVET
TVTPGITTTAVAPSKLMTSTTCLPPTSLPLGAAGMPVMPVGT PGQVSTPGTHASAPVGTATGVKPGTT
PPKPTKT VVPPVGT ELSAGTVPCQLPPFPGPSLIQSQQPLEDLDAQLRRTLSPETITVAVGPLSTMS
STTVTEAGTRLQKDGTEGHVTATSSGAGVVKMGRFQVSVTMDDAQKERKNRSEDTKSVHFESSTSESSVL
SSSSPESTLVKPEPNGISISGISLDVDPDSTHKAPTPEAKSDAGQPTKVGRFQVTTTANKVGRF SVSRTED
KVTELKKEGPTVSPFRDSEQTIPAVIPKKEKPELAEP SHLNGPSSDLEAAFLSRGTEDGSGSPHSPPH
LCSKSLPVQNLSQLSNFSNSSYMSSDNESDIEDEDLRLELRRLREKHLKEIQDLQSRQKHEIESLYTKL
GKVPVAVIIPPAAPLSGRRRRPTKSKGSKSSRSSLGNKSPQLSGNLSGQSGTSV LHPQQLLHPAGNTP E
TGHNQLLQPLKPS SSDNLYSAFTSDGAI SVPSLSAPGQGTSSNTVGGTVSSQAAQAQPPAMTSSRKG T
FTDDLHLKLDNWARDAMNLSGRRGSKGHMNYEGPGMARKFSAPGQLCVPM TSNLGGSTPISAA SATSLG H
FTKSMCPPQYGFPPAPFGTQWSGTGGPAPQLGQFQPVGTASLQNFNISNLQKSI SNPPG SNLRTT
  
```

TRTRPLEQKLI SEEDLAANDILDYKDDDDKV

Restriction Sites: SgfI-MluI

Cloning Scheme:

Cloning sites used for ORF Shutting:



* The last codon before the Stop codon of the ORF

ACCN: NM_198703

ORF Size: 7131 bp

OTI Disclaimer: The molecular sequence of this clone aligns with the gene accession number as a point of reference only. However, individual transcript sequences of the same gene can differ through naturally occurring variations (e.g. polymorphisms), each with its own valid existence. This clone is substantially in agreement with the reference, but a complete review of all prevailing variants is recommended prior to use. [More info](#)

OTI Annotation: This clone was engineered to express the complete ORF with an expression tag. Expression varies depending on the nature of the gene.

Components: The ORF clone is ion-exchange column purified and shipped in a 2D barcoded Matrix tube containing 10ug of transfection-ready, dried plasmid DNA (reconstitute with 100 ul of water).

Reconstitution Method:

1. Centrifuge at 5,000xg for 5min.
2. Carefully open the tube and add 100ul of sterile water to dissolve the DNA.
3. Close the tube and incubate for 10 minutes at room temperature.
4. Briefly vortex the tube and then do a quick spin (less than 5000xg) to concentrate the liquid at the bottom.
5. Store the suspended plasmid at -20°C. The DNA is stable for at least one year from date of shipping when stored at -20°C.

RefSeq: [NM_198703.3](#), [NP_941992.2](#)
RefSeq Size: 10575 bp

RefSeq ORF: 7134 bp

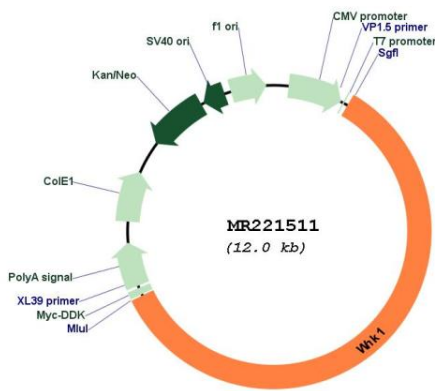
Locus ID: 232341

UniProt ID: [P83741](#)
Cytogenetics: 6 F1

MW: 251.4 kDa

Gene Summary: Serine/threonine kinase which plays an important role in the regulation of electrolyte homeostasis, cell signaling, survival, and proliferation. Acts as an activator and inhibitor of sodium-coupled chloride cotransporters and potassium-coupled chloride cotransporters respectively. Activates SCNN1A, SCNN1B, SCNN1D and SGK1. Controls sodium and chloride ion transport by inhibiting the activity of WNK4, by either phosphorylating the kinase or via an interaction between WNK4 and the autoinhibitory domain of WNK1. WNK4 regulates the activity of the thiazide-sensitive Na-Cl cotransporter, SLC12A3, by phosphorylation. WNK1 may also play a role in actin cytoskeletal reorganization. Phosphorylates NEDD4L. Acts as a scaffold to inhibit SLC4A4, SLC26A6 as well as CFTR activities and surface expression, recruits STK39 which mediates the inhibition (PubMed:21317537, PubMed:23542070). [UniProtKB/Swiss-Prot Function]

Product images:



Circular map for MR221511