

Product datasheet for MR221495

Adamts6 (NM_001081020) Mouse Tagged ORF Clone

Product data:

Product Type:	Expression Plasmids
Product Name:	Adamts6 (NM_001081020) Mouse Tagged ORF Clone
Tag:	Myc-DDK
Symbol:	Adamts6
Synonyms:	A930019D11Rik; ADAM-TS6; b2b1879.1Clo; b2b2029Clo; b2b2182Clo; b2b2187.1Clo; b2b2228Clo
Mammalian Cell Selection:	Neomycin
Vector:	pCMV6-Entry (PS100001)
E. coli Selection:	Kanamycin (25 ug/mL)
ORF Nucleotide Sequence:	>MR221495 representing NM_001081020 Red=Cloning site Blue=ORF Green=Tags(s)

TTTTGTAATACGACTCACTATAGGGCGGCCGGAATTCGTCGACTGGATCCGGTACCGAGGAGATCTGCC
GCCGCGATCGCC

ATGGAATTTCTGTGAAAACGTTGACTTGGATTCTGAGCCTCATCATGGCCTCATCGGAATTTTATAGTG
ACCACAGACTTTTCATATAGTTCTCAAGAGGAATTCCTGACTTATCTTGAACACTACCAGCTAACTATTCC
AATAAGAGTTGACCAAAATGGAGCTTTTCTCAGCTTTACTGTGAAAAATGATAAACACTCAAGAAGAAGA
CGGAGTATGGACCTTCTTGATCCACAGCAGGCAGTGTCTAAATTTTTTAACTTTTCAGCCTATGGCA
AGCACTTTACCTAACTTGACTCTCAATACAAATTTTGTGTCCAACATTTTACAGTAGAGTATTGGGG
GAAAGATGGACCCAGTGAAACATGATTTTTTAGACAACGTCACTACACAGGATACTTGAAGATCAA
CATAGTACAACAAAGTGGCTTTAAGCAACTGTGTGGATTGCATGGTATTATTGCTACAGAAGATGAAG
AATATTTTATTGAGCCTCTAAAGAATACTACAGAGGATCCAAACATTTTATGTTATGAAAATGGCCATCC
TCATGTTATTTACAAAAAGTCTACTCTTCAGCAACAACATATCTATGATCATTCTCATTGTGGGGTTTCA
GATCTCACAGGAAGTGGCAAACCTTGGTGGCTGAATAAGACATCATCTTTTCTTCTTTACCACCAATTA
ATGACACACATATTCATCACAGAAAAGAGAAGATCTGTGAGCACTGAGAGATTTGTGGAGACTTTAGTAGT
GGCAGACAAAATGATGGTGGGCTACCATGGCCGTAAGACATTGAACATTATATTTAAGTGTGATGAAT
ATTGTTGCCAACTTTATCGTGACTCCAGTCTAGGAAACGTTGTGAATATATAGTGGCTCGCTTAATTG
TTCTCACTGAAGATCAGCCAACTTGGAGATAACCATCATGCAGACAAGTCCCTCGATAGCTTCTGTAA
ATGGCAGAAATCCATTCTCCCAAAAGTGTGAAACACCATTCAGAAAATGGGATGGCCACCAC
GATAATGCAGTTCTTATTACTAGATATGATATCTGCACGTATAAAAACAAGCCCTGTGGAACACTGGGCT
TAGCCTCTGTGGCTGGAATGTGTGAGCCTGAAAGGAGCTGCAGCATTAAATGAAGACATTGCCTAGGCTC
GGCTTTTACCATCGCACATGAGATTGGTACAATTTTGGTATGAACCATGATGGAATTGGAATTTCTGT
GGGACGAAAGGTCATGAGGCAGCAAACTTATGGCAGCTCATATTACTGCAAATACCAATCCCTTCTCCT
GGTCTGCCTGCAGCAGAGACTACATCACCAGCTTCTAGATTCAGGCCGTGGTACTTGCCTTGATAATGA



[View online »](#)

GCCTCCAAAGCGTGACTTTCCTTTATCCAGCTGTGGCCCCAGGTCAGGTGTATGATGCTGATGAACAATGT
 CGTTTCCAGTATGGAGCAACATCCCGCCAATGCAAATATGGGGAAGTGTGTAGAGAGCTCTGGTGCCTCA
 GCAAAAGCAACCGCTGTGTACCAACAGTATTCCAGCTGCTGAGGGGACACTGTGTGACTGGGAATAT
 TGAGAAAGGGTGGTGTTATCAGGGAGATTGTGTTCTTTTGGCACATGGCCCCAGAGTATTGATGGGGGC
 TGGGGTTCCTGGTCACTGTGGGGCAGTGCAGTAGGACCTGCGGAGGAGGTGTCTCTCGTCTCTAAGAC
 ACTGTGACAGTCCAGCACCTTCAGGAGGTGGGAAATATTGCCTTGGTAAAAGGAAACGCTACCGCTCTTG
 CAACACAGATCCATGCCCTTTGGGTTCCGAGATTTTCGAGAAAAACAGTGTGACACTTTGACAGTATG
 CCTTCCGGGAAAGCATTATAACTGGAACCCTATACTGGAGGTGGGGTAAAACCTTGTGCATTAATTT
 GCCTGGCTGAAGGCTATAATTTCTACACAGAGCGAGCTCCTGCTGTGATAGATGGACACAGTGCATGC
 AGACTCACTGGATATCTGTATCAATGGAGAATGCAAGCACGTAGGTTGTGATAATATTTTGGGATCTGAT
 GCTAGGGAAGATAGGTGCCGAGTCTGTGGTGGGGATGGAAGCACCTGTGATGCCATTGAAGGGTTCTTCA
 ATGACTCATTGCCAGAGGAGTTATATGGAAGTGGTTCAGATACCAAGAGGCTCTGTTCATATTGAAGT
 AAGAGAAGTTCCATGTCAAAAAATTACATTGCTTTAAAATCTGAAGGGGATGTTACTACATTAATGGT
 GCCTGGACTATTGACTGGCTTAGGAAATTTGATGTTTCGGGGACAGCTTTTCACTACAAGAGACCGACAG
 ATGAACCAAGATCCTTGAAGCTCTAGGACCCACCTCTGAGAACCCTATTGTAATGGTTCCTACTCCAAGA
 ACAGAATTTGGGAATTAGGTACAAGTTCATGTTCCCATCGTTCGTAAGTGGCAGTGGAGATAATGAAGTT
 GGCTTCATGTGGACTTATCAGCCCTGGGCGGAGTGTCTGCTACTTGTGCTGGAGGTGTCCAAAGACAAG
 AAGTGGTCTGTAAAAGATTGGATGACAACCTCATTGTCCAGAACAATTTCTGTGATCCTGACAGTAAGCC
 ACCTGAAAATCAAAGAGCCTGCAACACTGAGCCTTGCCACCTGAATGGTTCATTGGAGACTGGTTGGAG
 TGCAGCAAAGACTGTGATGGTGGGATGCGCACAAGGGCCGTGCTCTGCATCAGGAAAAGTTGGACCTCTG
 AAGAGGAAACACTGGACTACGGCGACTGCTTAACACACCGGCCTGTGGAGAAAGAGTCTGCAACAACCA
 GTCATGTCACCTCAGTGGTAGCTTTGGACTGGTCCGAATGACTCCTAAATGTGGTTCAGGATTCAAG
 CATCGGATTGTTCTGTGCAAGAGCAGTACCTTTCTAAAACATTCACAGCTGCACAATTCAGAGAGAGA
 GCAAGCCTCCTGCTCGCATCCGCTGCAGTCTGGGCGCTGCCCTCCTCCCGCTGGGTGACAGGAGACTG
 GGGCCAGTGTCTGCTCAGTGTGGTCTTGGACAACAAATGAGAAGTGTCCAGTGCCTTCTATACTGGA
 CAGGCGTCTGTTGACTGTCCAGAACTGTCCGGCTCCATCCATGCAGCAGTGTGACAGCAAATGTGATA
 GCACCCCTCTCTCCAGTACTGAAGAGTGCAAGATGTGAACAAAGTGGCTATTGCCACTGGTGTGAA
 GTTCAAGTTCTGCAGTCGAGCATACTTCAGACAGATGTGTTGTAAGACCTGCCAAGGACAC

ACGCGTACGCGGCCGCTCGAGCAGAAACTCATCTCAGAAGAGGATCTGGCAGCAAATGATATCCTGGATT
 ACAAGGATGACGACGATAAGGTTTAA

Protein Sequence:

>MR221495 representing NM_001081020
 Red=Cloning site Green=Tags(s)

MEISWKTLTWILSLIMASSEFYSDHRLSYSSQEEFLTYLEHYQLTIPIRVDQNGAFLSFTVKNDKHSRRR
 RSMDLLDPQQAVSKLFFKL SAYGKHFHLNLTNTNFVSKHFTVEYWGKDGQWKHDFLDNCHYTGYLQDQ
 HSTTKVALSNCVGLHGI IATEDEEYFIEPLKNTTEDSKHF SYENHHPHVIYKKSTLQQQHIYDHSKCVS
 DLTGSGKPWWLNKTSFPLPPIINDTHIHRKRRSVSTERFVETLVVADKMMVGYHGRKDIEHYIL SVMN
 IVAKLYRDSLSLGNVNIIVARLIVLTEDQPNLEINHADKSLDSFCKWQKSILSHQSDGNTIPENGLIAHH
 DNAVLITRYDICTYKNKPCGTLGLASVAGMCEPERSCSINEDI GLGSAFTIAHEIGHNFGMNHGIGNSC
 GTKGHEAAKLMAAHITANTNPFWSACS RDYITSFLDSGRGTCLDNEPPKRDFLYP AVAPAGQVYDAEQC
 RFQYGATSRQCKYGEVCRELWCLSKSNRCVTNSIPAAEGLCQTGNI EKWCYQGDVFPFGTWPQSIDGG
 WGSWSLWGECSRTCGGVVSSLRHCDSPAPSGGKYCLGERKRYRSCNTDPCPLGSRDFREKQCADFDSM
 PFRGKHYNWKPYTGGGVKPCALNCLAEGYNFYTERAPAVIDGTQCNADSLD ICINGECKHVGCDNILGSD
 AREDRCRVCGGDSTCDAIEGFNDLPRGGYMEVVQIPRGSVHIEVREVSMKNIYALKSEGDDYYING
 AWTIDWPRKFDVSGTAFHYKRPDPEPESLEALGPTSENLI VMVLLQEQLNGIRYKFNVP IVRTGSGDNEV
 GFMWYQYPAECSATCAGGVQRQEVVCKRLDDNSIVQNNFCDPD SKPPENQRACNTEPCPEWFIGDWLE
 CSKTCDDGMTRAVLCIRKVGPEEETLDYGDCLTHRPVEKESCNNQSCPPQWVALDWSECTPKCGSGFK
 HRIVLCKSSDLKTFPAAQCPEESKPPARIRCSLGRCP PPWVTGDWQCSAQCGLQQQMRTVQCLSYTG
 QASVDCPETVRPPSMQCDKCDSTPLSSTEECKDVNKVAYCPLVLKFKFC SRAYFRQMCCCKTCQGH

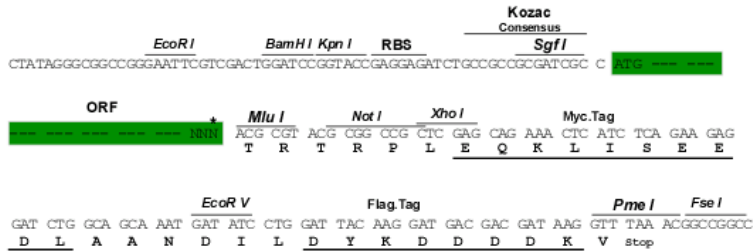
TRTRPLEQKLI SEEDLAANDILDYKDDDDKV

Chromatograms: https://cdn.origene.com/chromatograms/mm9047_a02.zip

Restriction Sites: SgfI-MluI

Cloning Scheme:

Cloning sites used for ORF Shutting:

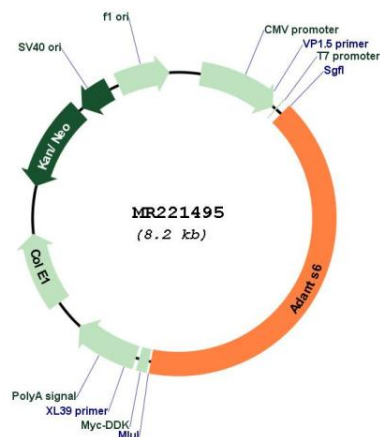


* The last codon before the Stop codon of the ORF

ACCN: NM_001081020

ORF Size: 3351 bp

OTI Disclaimer:	The molecular sequence of this clone aligns with the gene accession number as a point of reference only. However, individual transcript sequences of the same gene can differ through naturally occurring variations (e.g. polymorphisms), each with its own valid existence. This clone is substantially in agreement with the reference, but a complete review of all prevailing variants is recommended prior to use. More info
OTI Annotation:	This clone was engineered to express the complete ORF with an expression tag. Expression varies depending on the nature of the gene.
Components:	The ORF clone is ion-exchange column purified and shipped in a 2D barcoded Matrix tube containing 10ug of transfection-ready, dried plasmid DNA (reconstitute with 100 ul of water).
Reconstitution Method:	<ol style="list-style-type: none"> 1. Centrifuge at 5,000xg for 5min. 2. Carefully open the tube and add 100ul of sterile water to dissolve the DNA. 3. Close the tube and incubate for 10 minutes at room temperature. 4. Briefly vortex the tube and then do a quick spin (less than 5000xg) to concentrate the liquid at the bottom. 5. Store the suspended plasmid at -20°C. The DNA is stable for at least one year from date of shipping when stored at -20°C.
RefSeq:	<u>NM_001081020.2, NP_001074489.1</u>
RefSeq Size:	4822 bp
RefSeq ORF:	3354 bp
Locus ID:	108154
Cytogenetics:	13 D1
MW:	125.5 kDa

Product images:


Circular map for MR221495