

Product datasheet for **MR221476**

Adamts8 (NM_013906) Mouse Tagged ORF Clone

Product data:

Product Type:	Expression Plasmids
Product Name:	Adamts8 (NM_013906) Mouse Tagged ORF Clone
Tag:	Myc-DDK
Symbol:	Adamts8
Synonyms:	METH-2; METH2
Mammalian Cell Selection:	Neomycin
Vector:	pCMV6-Entry (PS100001)
E. coli Selection:	Kanamycin (25 ug/mL)



[View online »](#)

ORF Nucleotide Sequence:

>MR221476 representing NM_013906
 Red=Cloning site Blue=ORF Green=Tags(s)

TTTTGTAATACGACTCACTATAGGGCGGCCGGGAATTCGTCGACTGGATCCGGTACCGAGGAGATCTGCC
 GCC**GCGATCGCC**

ATGCTCCGCGACCCACCACCACCGGGTGGCCGCCCTCTGCTGCTGCTATTGCAGCTGCCGCCGCCG
 CACTCGTCTGCGGCGCCCGGGCGGGCCGGGAACCGGGCGCAGGCCCTCGGAGCTAGTGGTGCCACGCG
 GTTGCCCGGCAGCGGAGCGAGCTCGCCTTCCACCTGTCCGCTTCGGCCAGGGCTTCGTGCTGCGCCTG
 GCGCTGACGCCAGTTCTGGCGCCGAATCAAGATCGAGCGCCTCGGGGGCTCGAGCGCGCGGCCG
 GGGGCGAGCCGGACTGCGTGGCTGTTCTTCTGACACAGTGAATGGAGAACGGGAGTCGCTGGCGGC
 GATGAGCTGTGTCGCGGGCTGAGCGGCTGTTCTTGTGTCGAGGCGAGGAGTTCACCATCCAGCCACAG
 GGCCTGGGGACTCCCTGGACCAGCTCATCGCTGCAGCGCTGGGGGCCGGACAGCGCCGGAAGACC
 CCGGGCTCGTGGCGCCGAAGTTTTCCCTCCCTCAAGGACTGGAGTGGGAGGTGGAGATGGGTAAATGG
 GCAGGGACAGGAGAAGTGACAACGAAGAGGACAGGAAGCAGGACAAGGAGGGTTGCTCAAAGAGACA
 GAAGACTCCCGCAAAGTGCCACCACCCTTCGGATCCAAAAGTGAAGCAAGAGGTTTGTGTCGAGGCTC
 GCTTCGTGGAACACTTCTGGTGGCTGATGCGTCCATGGCTGCCTTCTATGGGACCGACCTGCAGAACCA
 CATCCTCACGGTATGTCATGGCAGCCGAATCTACAAGCACCAGCATCAGGAACTCCGTCAACCTT
 GTGGTGGTGAAGTGCTAATAGTGAAGAGGAAGGATGGGGCCCGGAGGTGTCGGACAACGGGGGCTCA
 CACTGCGCAACTTCTGCAGCTGGCAACGGCGTTTCAACAAGCCAGTACCGCCACCCGGAGCACTATGA
 CACTGCCATCTTGTTCACAGACAGAATCTGTGGGAAGGGAGAGCAGTGTGACACCCTGGGGATGGCA
 GACGTTGGCACCATCTGTGACCCCGACAAGAGCTGCTCAGTATCAAGGATGAGGGACTGCAGGCACCT
 ACACCTGGCCCATGAGTAGGGCACGTTCTCAGCATGCCCATGATGATTCTAAGCCCTGTGTGAGATT
 GTTTGGGCCCATGGCAAGTACCACATGATGGCGCCATTCTTCCACGTGAACAAGACGCTGCCCTGG
 TCTCCCTGCAGTGTCTACCTCACAGAGCTCCTGGATGATGGTACGAGATTGTCTTCTGGATGCC
 CCACCTCGTTCTGCCCTCCACAGGCTCCCGGGCCACAGCACCTTACGAGCTGGACCAGCAGTG
 CAAGCAGATCTTTGGCCTGATTTCCGACACTGCCCAACACCTCTGTGGAGGACATCTGTGTCCAGCTC
 TGGTGGCGTCATCGGATAGTATGAGCCATTTGCCACAAAGAATGGTAGCCTGCTGGGCTGATG
 GTACACCCTGTGGCCTGGGCACCTGTGCCTGGATGGTAGCTGTGTACTCAAGGAGGATGTGGAGAAATCC
 CAAGGCTGTGGTAGATGGAGACTGGGTCCTGGAGACCCTGGGACAATGTTCTCGCACCTGTGGTGA
 GGGATACAATTCTGAACCGTGAATGTGATAATCCAATGCCTCAGAATGGAGGAAGATTTGCCCTGGGTG
 AAAGAGTCAAGTACCAATCATGCAACACAGAGGAATGTCCACCAACGGAAAAAGCTTCGGGAGCAGCA
 GTGTGAGAAATATAATGCCTACAACCACACTGACCTGGATGGGAATTTCTGCAGTGGGTCCCAAGTAT
 TCAGGAGTGTCCCCCGAGACCGATGCAAGCTGTTTTGCAGAGCCCGTGGGAGGAGTGAGTTCAAAGTGT
 TTGAAGCTAAGGTGATCGATGGCACTCTGTGTGGACCGGATACTCTGTCCATCTGCGTCCGGGGCAATG
 TGTTAAGGCTGGCTGTGACCATGTGGTGAACCTCACCTAAGAAGCTGGACAATGTGGGGTGTGTGGGGC
 AAAGGCACTGCCTGTAGGAAGATCTCCGGTCTTTACCCCTTCAGTTATGGCTACAATGACATTGTCA
 CCATCCAGCTGGTGCCACAAACATTGATGTGAAACAGCGGAGTACCCAGGGGTGAGAACGACGGCAG
 CTACCTGGCGCTGAAGACAGCCAATGGCAGTACCTGCTCAATGGTAACCTGGCCATCTCTGCCATAGAG
 CAAGACATCTTGGTGAAGGGGACCATCCTGAAGTACAGTGGCTCCATGGCTACCCTGGAGCGGCTGCAGA
 GCTTCCAGGCCCTGCCTGAGCCTTTACAGTACAGCTCCTGACTGTGTCTGGTGGGCTTCCCTCCAAA
 AGTCAGATATACCTTCTTTGTCCCAATGACATGGACTTCAGCGTGCAGAATAGCAAGGAAAGAGCAACC
 ACCAACATCATTAGTCACTGCCCTCTGCGGAGTGGTCTGGGAGACTGGTCTGAATGTCCGAGCACGT
 GCAGAGGTAGCTGGCAGCGCGGACTGTGGAATGCAGGGACCCCTCAGGTGAGGCTCTGACACCTGTGA
 TGAGGCTCTGAAACCTGAGGATGCCAAGCCCTGTGGAAGCCAGCCGTGTCCCTC

ACGCGTACGCGGCCGCTCGAGCAGAACTCATCTCAGAAGAGGATCTGGCAGCAATGATATCTGGATT
 ACAAGGATGACGACGATAAGGTTTAA

Protein Sequence: >MR221476 representing NM_013906
 Red=Cloning site Green=Tags(s)

MLRDPTTTGWPPLLLLLQLPPPPLVCGAPAGPGTGAQASELVVPTRLPGSASELAFHLSAFGQGFVLR
 APDASFLAPEFKIERLGGSSAAAGGEPGLRGCFFSGTVNGERESLAAMSLCRGLSGSFLLAGEEFTIQPQ
 GAGDSLDPHRLQRWGPQRREDPLAAAEVFLPQGLEWEVEMGNGQGQERSDNEEDRKQDKEGLLKET
 EDSRKVPPPFSGKTRSKRFVSEARFVETLLVADASMAAFYGTDLQNHILTVMSMAARIYKHPSIRNSVNL
 VVVKVLIVEEGWGEVSDNGGLTLRNFCSWQRRFNKPSDRHPEHYDTAILFTRQNF CGKGEQCDTLGMA
 DVGITCDPKKSCSVIKDEGLQAAYTLAHELGHVLSMPHDDSKPCVRLFGPMGKYHMMAPFFIHVNKTLPW
 SPCSAVYLTELLDDGHGDCLLDAPTSVLPPTGLPGHSTLYELDQCKQIFGPDFRHCNPTSVEDICVQL
 WCRHRDSDEPICHKNGSLLWADGTPCGPHLCLDGSCVLKEDVENPKAVVDGDWGPWRPWGQCSRTC
 GIQFSNRECDNPMPQNGGRFCLGERVKYQSCNTEECPPNGKSFREQQCEKYNAYNHTDL DGNFLQWVPKY
 SGVSPDRCKLFCRARGRSEFKVFEAKVIDGTLCPDTLSICVRGQCVKAGCDHVNSPKKLDKCGVCGG
 KGTACRKISGSFTPF SYGYNDIVTIPAGATNIDVKQRSHPGVRNDG SYLALKTANGQYLLNGNLAI SAIE
 QDILVKGTILKYSMATLERLQSFQALPEPLTVQLLTVSGEVFPKVRVYTFVFPNDMDFSVQNSKERAT
 TNIIQSLPSAEWVLGDWSECPSTCRGSWQRRTECRDPSGQASDTCDEALKPEDAKPCGSQPCPL

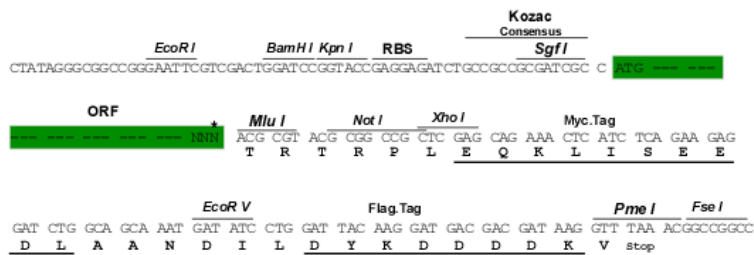
TRTRPLEQKLISEEDLAANDILDYKDDDDKV

Chromatograms: https://cdn.origene.com/chromatograms/mm9007_b07.zip

Restriction Sites: SgfI-MluI

Cloning Scheme:

Cloning sites used for ORF Shuttling:

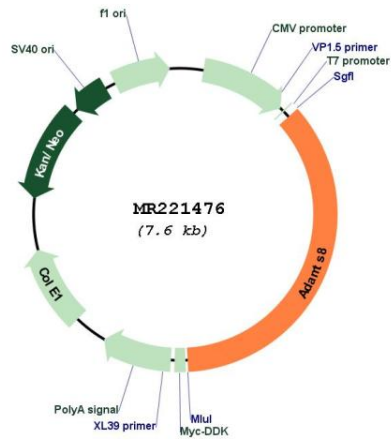


* The last codon before the Stop codon of the ORF

ACCN: NM_013906

ORF Size:	2715 bp
OTI Disclaimer:	The molecular sequence of this clone aligns with the gene accession number as a point of reference only. However, individual transcript sequences of the same gene can differ through naturally occurring variations (e.g. polymorphisms), each with its own valid existence. This clone is substantially in agreement with the reference, but a complete review of all prevailing variants is recommended prior to use. More info
OTI Annotation:	This clone was engineered to express the complete ORF with an expression tag. Expression varies depending on the nature of the gene.
Components:	The ORF clone is ion-exchange column purified and shipped in a 2D barcoded Matrix tube containing 10ug of transfection-ready, dried plasmid DNA (reconstitute with 100 ul of water).
Reconstitution Method:	<ol style="list-style-type: none">1. Centrifuge at 5,000xg for 5min.2. Carefully open the tube and add 100ul of sterile water to dissolve the DNA.3. Close the tube and incubate for 10 minutes at room temperature.4. Briefly vortex the tube and then do a quick spin (less than 5000xg) to concentrate the liquid at the bottom.5. Store the suspended plasmid at -20°C. The DNA is stable for at least one year from date of shipping when stored at -20°C.
RefSeq:	NM_013906.3 , NP_038934.2
RefSeq Size:	3632 bp
RefSeq ORF:	2718 bp
Locus ID:	30806
Cytogenetics:	9 16.49 cM
MW:	99.4 kDa
Gene Summary:	This gene encodes a member of "a disintegrin and metalloproteinase with thrombospondin motifs" (ADAMTS) family of multi-domain matrix-associated metalloendopeptidases that have diverse roles in tissue morphogenesis and pathophysiological remodeling, in inflammation and in vascular biology. This gene is expressed in mouse lung, heart and macrophage-rich areas of atherosclerotic plaques. The encoded preproprotein undergoes proteolytic processing to generate an active, zinc-dependent aggrecanase enzyme. This gene is located adjacent to a related ADAMTS gene on chromosome 9. [provided by RefSeq, May 2016]

Product images:



Circular map for MR221476