

Product datasheet for MR221428

Gm16442 (NM_001167148) Mouse Tagged ORF Clone

Product data:

Product Type:	Expression Plasmids
Product Name:	Gm16442 (NM_001167148) Mouse Tagged ORF Clone
Tag:	Myc-DDK
Symbol:	Gm16442
Synonyms:	EG667071; Vmn1r92
Mammalian Cell Selection:	Neomycin
Vector:	pCMV6-Entry (PS100001)
E. coli Selection:	Kanamycin (25 ug/mL)
ORF Nucleotide Sequence:	>MR221428 representing NM_001167148 Red=Cloning site Blue=ORF Green=Tags(s)

TTTTGTAATACGACTCACTATAGGGCGGCCGGAATTCGTCGACTGGATCCGGTACCGAGGAGATCTGCC
GCC**CGATCGCC**

ATGTCTGCTCATGGTAAATCCGTGAAAACCACTGAGGAAGTAGCTCTTCAGCTCCTCTTGTGTTTGGCAGT
TTGGGGTTGGGACTGTGGCCAATGTCTTTCTGTTGTCCATAATTTCTCTCCAGTCTTGACTGGTTCTAA
ACAGAGGCCAGACAGGTGATTTAAGCCACATGGCTGTGGCCAATGCCTTGACTCTATTCCTCACTATA
TTTCCAAACAACATGATGGCTTTTGTCCAAAACCTCCAACCTGAACCTCAAATGTAATAGAAATCCT
TCAGTCACCTGGTGGCAAGAAGCACAAACTTGTGTCCACCTGTGTCTGGGTGCCATCAGTTTGTCCAC
TCTGGTTCTCTTAATAGAGGAAAGGTAACCTTGTACTTAGAGCAAGTGTACAAAACATGGCAAGTTAT
TCTTCTTACAGTTGTTGGTTTTTCAAGTGTCTTAAGTAACATTCACATTCCAATTAAGGTCAGTGGTCCAC
AGATAACAGACAATAACACTGACTCAAACAGAAAGTTGTTCTGTTCCACTTCTGGATTCAAGTGTAGGCAT
TGTCTCTTGCAGTTTGCCTATGATGCCACATTCATGAGCATCATGGTCTGGACCAGTGTCTCCATGGTA
CTTCTCTCCATAGACATCGCCAGCGAATGCAGCACATCTCACTCCCAATCAGGACGCCAGAGGCCAAG
CTGAGACCAGAGCAACCTGACTATCTTGATGCTGGTAGTCACATTTGTTAGCTTTTATCTTCTAAATTT
TATTTGTATCATGTTACATGCCCTTTTATGCATTCTCATTCTTCATAAGGCTTGTGAGTGGATTTTA
ACTGCAGTCTTCCCAGTATCTCTCTTACTGTTGATCTTCAGAGATCCCAAGGATCCTTGTCTGTGC
TCTTCAACTGT

ACGCGTACGCGGCCGCTCGAGCAGAAACTCATCTCAGAAGAGGATCTGGCAGCAAATGATATCCTGGATT
ACAAGGATGACGACGATAAGGTTTAA



[View online »](#)

Protein Sequence: >MR221428 representing NM_001167148
Red=Cloning site Green=Tags(s)

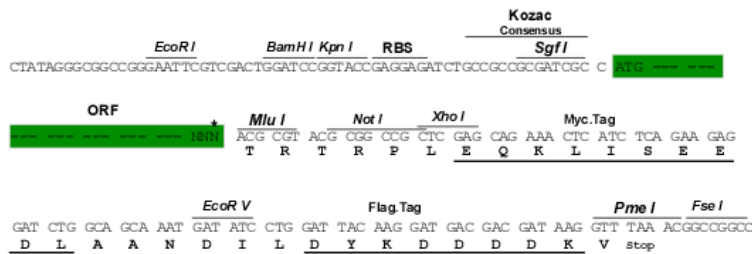
MSAHGKSVKTTEEVALQLLLFCQFGVGTVANVFLFVHNFSPVL T GSKQRPRQVILSHMAVANALTLFLTI
 FPNNMAFAPKTPPTLCKLESFSLVARSTNLCSTCVLVGHQFVTLVPLNRGKGLVLRASVTNMASY
 SSSYSCWFFSVLSNIHIPIKVSQPQITDNNNTDSNRKLF CSTSGFSVIGIVLLQFAYDATFMSIMVWTSVSMV
 LLLHRHRQRMQHILTPNQDARGQAETRATCTILMLVVT FVSFYLLNFICIMLHALFMHSHFFIRLVSEIL
 TAVFPSISPLLLIFRDPKDPCSVLFNC

TRTRPLEQKLISEEDLAANDILDYKDDDDKV

Restriction Sites: SgfI-MluI

Cloning Scheme:

Cloning sites used for ORF Shuttling:



ACCN: NM_001167148

ORF Size: 921 bp

OTI Disclaimer: The molecular sequence of this clone aligns with the gene accession number as a point of reference only. However, individual transcript sequences of the same gene can differ through naturally occurring variations (e.g. polymorphisms), each with its own valid existence. This clone is substantially in agreement with the reference, but a complete review of all prevailing variants is recommended prior to use. [More info](#)

OTI Annotation: This clone was engineered to express the complete ORF with an expression tag. Expression varies depending on the nature of the gene.

Components: The ORF clone is ion-exchange column purified and shipped in a 2D barcoded Matrix tube containing 10ug of transfection-ready, dried plasmid DNA (reconstitute with 100 ul of water).

Reconstitution Method:

1. Centrifuge at 5,000xg for 5min.
2. Carefully open the tube and add 100ul of sterile water to dissolve the DNA.
3. Close the tube and incubate for 10 minutes at room temperature.
4. Briefly vortex the tube and then do a quick spin (less than 5000xg) to concentrate the liquid at the bottom.
5. Store the suspended plasmid at -20°C. The DNA is stable for at least one year from date of shipping when stored at -20°C.

RefSeq: [NM_001167148.1](#), [NP_001160620.1](#)

RefSeq Size: 924 bp

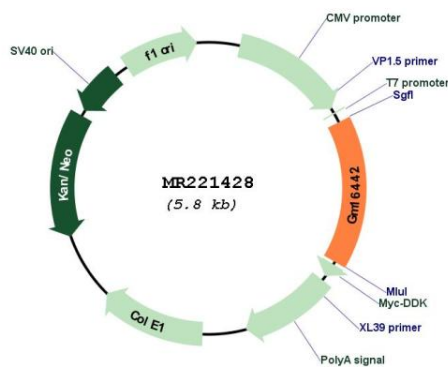
RefSeq ORF: 924 bp

Locus ID: 620401

Cytogenetics: 7 A3

MW: 34.3 kDa

Product images:



Circular map for MR221428