

Product datasheet for MR221426

Taf4 (NM_001081092) Mouse Tagged ORF Clone

Product data:

Product Type:	Expression Plasmids
Product Name:	Taf4 (NM_001081092) Mouse Tagged ORF Clone
Tag:	Myc-DDK
Symbol:	Taf4
Synonyms:	135kDa; AI450312; Taf2c1; Taf4a; TAFII130; TAFII135
Mammalian Cell Selection:	Neomycin
Vector:	pCMV6-Entry (PS100001)
E. coli Selection:	Kanamycin (25 ug/mL)
ORF Nucleotide Sequence:	>MR221426 representing NM_001081092, codon optimized . Due to the complexity of NM_001081092, the ORF clone is codon optimized for mammalian Expression. The nucleotide sequence differs from the reference sequence, yet the amino acid sequence remains identical.

Red=Cloning site Blue=ORF Green=Tags(s)

TTTTGTAATACGACTCACTATAGGGCGGCCGGAATTCGTCGACTGGATCCGGTACCGAGGAGATCTGCC
GCC**CGGATCGCC**

ATGGCTGCGGGATCCGACCTCTTGGATGAGGTCTTTTTAACAGCGAGGTGGACGAGAAGTTGTCAGTG
ATCTGGTGGGATCCCTTGAAAGTCAGCTGGCTGCGTCCGCCGCCACCATCATCACTTGGCTCCCAGAAC
ACCGGAGCTGAGGGCTGCAGCTGCCGGAGCGCTCGGCAACCACGTCGTATCCGGCTCCCCTGCTGGCGCT
GCCGGCGCCGACCAGCAGCGTCCGCTGAAGGCGCCCCTGCCGCCCCCCTGAGCCACCTCCAGCTGGGA
GGGCTAGACCAGCTGGAGGAGGTCCACGGCGCCGGATCCAGCTCTCCGAGAAGACTCCTGGTGCCTGC
AGGGCCAGCCCCTGCTCCAGCGAACTGCGCCACTGCCCGAGGCTAGCGCCGACCCCTGCCCTGCCGCC
GCCGCCGAGCCGACGTAACCGTGCAGCCGTTGCTGGACCAGACCCGGTGCAGCCGCTCCACCTGCCG
GTCCAGGCGGTCTAAGCCCGCCCCCGGGCCCGCCGGGAGCCGACAACCCCTAACGGTTC
CGCGGCTCCACCTACCGCCCTCATGCAGCTCCCGCTGTTAGCCCTGTGAACAATGGCCAGCTCCTCCT
CCAGCTGCAGGGAGCGTGATCCAAGCTGCTCCCGCCCAGCGGCCCTAGTCCCCCGCAGCCCCGGCTC
CTGCCGCCCTCCACCACCTGCCCCACCTGCGCCCGTGGCCCCGCTAGACCACCTGGACATCCTGCTGC
CCCTGCCCCCCCGTGTACCTGCGGCTGCAGCTGCCGCTGCTGCCGCCGCCGAGCCGCTCAGAACGGA
GCCGCTCCCGCTCCCGTGCAGCAAGCGGGGAGCCGAGGCTGGGTCAACCCGGCGCCGGCGCGCAAG
GGGCAAGGCTGAAGCGCAAAGCCAGGACCCGGTCTGGCCAGGTCTGCCGCCGGCTGCCGCCG
CGGGTGGCTGGAGGCGGTGCAGCAGGATCCGTGCTGCTCGGACCAGCCATGCCTGGGGCCCTGCCTGG
CCTGCCCCAGGACCCGCAGGCTCGCAAAGGGCGCCGCCGACGACAACCTTACTGCCGCGCACCC



CAGCCGCTACAACCGGGCAATCCGAGCGACTTTACACCAACAGTGTGGCCCCAGGTTGCCTCAGCC
 ACCGCAGAATCCCCTAACATCCAGAATTCCAGCTTCCGCCCGGCATGGTGTGGTACGGAGCGAAAT
 GGCCAGCTTCTCATGATCCCACAACAGGCGTTGGCACAGATGCAGGCTCATGCCAGGCGCAACACAGT
 CTACCATGGCTCCCAGACCTGCCACACCGACAGGCGCACCACCCGTTCAAATAAGCACTGTGCAGGCTCC
 CGGGACCCCCATCATCGCCCACAGGTGACTCCCACTACAATTATAAAGCAGGTGTACAAGCACAGACG
 ACAGTTCAACCCACCACCACTCTGCAGCGGAGCCAGGTGTTCAACCACAGCTGGTGTCTCGGAGGTAGCC
 CTCAGCCCGCATCCTTGGGAACAGCTACCGCTGTTTCAGACGGGCACCCCAACAAGCACTGTGGCAGGCGC
 CTCACAGACTTCCACCGCTGCAACCGAGACAATGGAGAAGCTTAAGAAGTGAAGAGCTTTTTGTCTACG
 TTGATCAAACCTGGCGAGTTCGGGAAAGCAGAGCACAGAACTGCCGCTAATGTCAAGGACCTGGTGCAGA
 ATCTGCTGGACGGCAAGATTGAGGCCGAGGACTTTACTTCTAGGCTGTACCGAGAGCTGAACTCCAGCCC
 TCAGCCATATCTGTCCCTTTTCTCAAGAGAAGCCTGCCAGCCCTCCGACAGCTTACCCAGATAGCGCA
 GCCTTTATCCAGCAGAGCCAGCAACAACAGCCACCAGCCTCACAGGCCACAACCGCACTCACCGCCGTTG
 TGCTGTCTAGTTCGTACAGAGAACAGCAGGAAAGACGGCAGCATCTGTTACATCTGCCCTTCAGCCCC
 CGTTATTAGCCTTACGCAGCCCACCAGGTGGGCGTTGGAAAGCAAGCCCCCAACTCCGCTGGTGATC
 CAGCAGCCACAAAGCCTGGTGCCTACTTCGACCCCAAGTACCCTGACCCAGACCCCTATGGTGG
 CCCTGCGACAGCCCATAACAGGATCATGTTGACAACCCCAAGCAATCCAGCTGAATCAGCTCCAGCC
 TGTACCTGTGGTGAACCTACGGTGTGCTGCTGGGACCAAGGCTCTGTCAACAGTGTCCGCTCAAGCTGCA
 GCAGCCAGAAAAACAACTGAAGGAACAGGGGGTGGGAGTTTTAGAGATGACGACGATATAAACGACG
 TCGCTTCCATGGCCGGCGTCAACCTGTCTGAGGAATCCGCAAGGATTCTCGCCACCAACAGCGAGCTGGT
 GGGTACTCTGACTCGCTCTTGAAGATGATACATTTCTGCTGCCTGCCCTCTGCAGCGGAGAATTTG
 GAGATTGGGAAGAAGCATGGAATAACAGAGCTGCACCCGATGTTGTGAGTTATGTCTCCACGCTACAC
 AACAGCGCCTGCAGAACCTTGTGAAAAGATTTCTGAGACAGCTCAGCAGAAGAAGTTAGTTACAAGGA
 TGATGACCGATATGAGCAAGCTAGTGATGTGAGGGCCAGTGAATTTCTCGAGCAGTTCAGCCAGT
 GAAAAACAGCGCAAGGACGAGCAGGAGAGAGAAAATTTCTCATGCGGGCAGCAAAAAGTTCGACGGCAG
 AGGATCTGAACAGCTTCGACTGAAACAAAAAGCAAGGAAATGCAGCAACAGGAACTGGCACAGATGCG
 ACAGAGAGATGCGAACCTGACTGCACTGGCAGCAATCGGCCCTAGGAAGAAGCGAAAAGTGGACTGCACA
 GGACCTGGGTGAGGAGCCGAAAGGAGTGGACCCGGCGCCGCTGTGCCAGGGGGCTCTGGAGTGGAAACCC
 CCAGACAGTTCCTAGGCAGAGAATTACCCGGGTGAATCTCCGAGACTTGATTTTTTCTGGAGAACGA
 GAGAGAAACCAGCCACAGTTTGTGTTGTATAAAGCCTTTCTGAAA

ACGCGTACGCGGCCGCTCGAGCAGAACTCATCTCAGAAGAGGATCTGGCAGCAATGATATCCTGGATT
 ACAAGGATGACGACGATAAGGTTTAA

Protein Sequence:

>MR221426 representing NM_001081092
 Red=Cloning site Green=Tags(s)

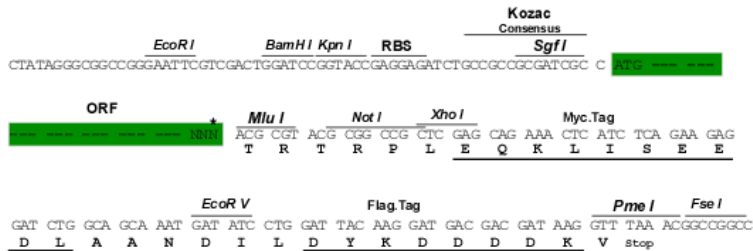
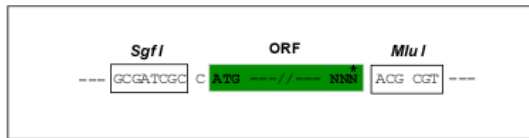
MAAGSDLLDEVFFNSEVDEKVVSDLVGSLESQLAASAAHHHHLAPRTPELRAAAAGALGNHVVSGSPAGA
 AGAGPAASAEGAPAAPEPPPAGRARPAGGPRRPGSSSPRRLLVPAGPAPAPAKLRPLPEASAGPCPAA
 AAAAAATAAAVAGPDPAAAAPPAGPGASKPGPPGPGAAQTLNGSAAPPTAPHAAPAVSPVNNGPAPP
 PAAGSVIQAAPAPAAPSPPAAPAPAAPPAPPAPPVAPARPPGHPAAPPVSPAAAAAAAAAAAAAQNG
 AAPAPAAAAGGAAAGLGGPGAGAQAQAEAPKPGPGPGPAAAAAAGVAGGGAAGSVLLGPAMPGALPG
 PAPGTPAGLAKGAAAATPSLPRTPAATTGAIRATLTPTVLAAPRLPQQPNPTNIQNFQLPPGMVLRSEN
 GQLLMIPQALAQMQAHAQAQPQSTMAPRPATPTGAPPVQISTVQAPGTPIIARQVTPTTIIKQVSAQT
 TVQPTTTLQRSPGVQPQLVLGGSAPASLGTATAVQTGTPQRTVPGASTTSTAATETMENVKKCSFLST
 LIKLASSGKQSTETAANVKDLVQNLLDGKIEAEDFTSRLYRELNSSPQPYLVPFLKRSLPALRQLTPDSA
 AFIQSQQQPPASQATTALTAVVLSVVQRTAGKTAASVTSALQPPVISLTQPTQVGVGKQAPPTPLVI
 QQPPKPGALIRPPQVTLTQTPMVALRQPHNRIMLTTTPQQIQLNQLQPVVVKPTVLPGTKALSTVSAQAA
 AAQKNKLIKPPGGGFRDDDDINDVASMAGVNLSEESARILATNSELVGTLTRSCKDDTFLLPAPLQRRIL
 EIGKKHGITELHPDVVSYYSHATQQRLQNLVEKISETAQQKNFSYKDDDRYEQASDVRAQLKFFEQLDQI
 EKQRKDEQEREILMRAAKSRSRQEDPEQLRLKQKAKEMQQQELAQMRQRDANLTALAAIGPRKRRKVDCT
 GPGSGAEGSGPAAVPGGSGVGTPRQFTRQIRITRVNLRDLIFCLENERETSHSLLLYKAFK

TRTRPLEQKLISEEDLAANDILDYKDDDDKV

Restriction Sites: SgfI-MluI

Cloning Scheme:

Cloning sites used for ORF Shuttling:



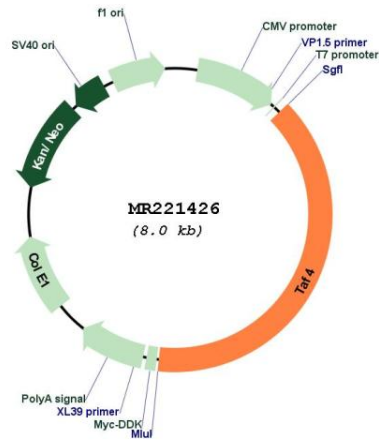
* The last codon before the Stop codon of the ORF

ACCN: NM_001081092

ORF Size: 3126 bp

OTI Disclaimer:	<p>Due to the inherent nature of this plasmid, standard methods to replicate additional amounts of DNA in E. coli are highly likely to result in mutations and/or rearrangements. Therefore, OriGene does not guarantee the capability to replicate this plasmid DNA. Additional amounts of DNA can be purchased from OriGene with batch-specific, full-sequence verification at a reduced cost. Please contact our customer care team at custsupport@origene.com or by calling 301.340.3188 option 3 for pricing and delivery.</p> <p>The molecular sequence of this clone aligns with the gene accession number as a point of reference only. However, individual transcript sequences of the same gene can differ through naturally occurring variations (e.g. polymorphisms), each with its own valid existence. This clone is substantially in agreement with the reference, but a complete review of all prevailing variants is recommended prior to use. More info</p>
OTI Annotation:	This clone was engineered to express the complete ORF with an expression tag. Expression varies depending on the nature of the gene.
Components:	The ORF clone is ion-exchange column purified and shipped in a 2D barcoded Matrix tube containing 10ug of transfection-ready, dried plasmid DNA (reconstitute with 100 ul of water).
Reconstitution Method:	<ol style="list-style-type: none"> 1. Centrifuge at 5,000xg for 5min. 2. Carefully open the tube and add 100ul of sterile water to dissolve the DNA. 3. Close the tube and incubate for 10 minutes at room temperature. 4. Briefly vortex the tube and then do a quick spin (less than 5000xg) to concentrate the liquid at the bottom. 5. Store the suspended plasmid at -20°C. The DNA is stable for at least one year from date of shipping when stored at -20°C.
RefSeq:	<u>NM_001081092.1</u> , <u>NP_001074561.1</u>
RefSeq Size:	4422 bp
RefSeq ORF:	3129 bp
Locus ID:	228980
Cytogenetics:	2 H4
MW:	105.3 kDa

Product images:



Circular map for MR221426