

Product datasheet for MR221376

Siglec15 (NM_001101038) Mouse Tagged ORF Clone

Product data:

Product Type:	Expression Plasmids
Product Name:	Siglec15 (NM_001101038) Mouse Tagged ORF Clone
Tag:	Myc-DDK
Symbol:	Siglec15
Synonyms:	Cd33l3; EG620235; SIGLEC-I
Mammalian Cell Selection:	Neomycin
Vector:	pCMV6-Entry (PS100001)
E. coli Selection:	Kanamycin (25 ug/mL)
ORF Nucleotide Sequence:	>MR221376 representing NM_001101038 Red=Cloning site Blue=ORF Green=Tags(s)

TTTTGTAATACGACTCACTATAGGGCGGCCGGAATTCGTCGACTGGATCCGGTACCGAGGAGATCTGCC
GCC**CGATCGCC**

ATGGAGGGGTCCCTCCAACCTCTGGCCTGCTTGGCCTGTGTGCTCCAGATGGGATCCCTTGTGAAACTA
GAAGAGACGCTTCGGGGGATCTGCTCAACACAGAGGCGCACAGTGCCCGGCGCAGCGTGGTCCATGCA
GGTGGCCCGGAGGTGAACGCGGAGGCTGGCGACGCGCGGTGCTGCCCTGCACCTTCACGCACCCGCAC
CGCCACTACGACGGGCCGCTGACGGCCATCTGGCGCTCGGGCGAGCCGTACGCGGGCCCGCAGGTGTTCC
GCTGCACCGCGCGCCGGGCGAGGCTGTGCCAGACGGCGCTGAGCCTGCACGGCGCTTCCGCGCTGCT
GGCAACCCGCGCCGCAACGACCTGTCCCTGCGCGTCGAGCGCCTCGCCCTGGCGGACAGCGGCCGCTAC
TTCTGCCGCGTGGAGTTCACCGCGACGCCACGATCGCTATGAGAGTCGCCATGGGGTCCGCTCTGCGCG
TGACTGCAGCTGCGCCGCGGATCGTCAACATCTCGGTGCTGCCGGGCCCCGCGCACGCTTCCGCGCGCT
CTGCACCCCGAGGGGGAGCCCCGCCCCGCCCTCGCCTGGTGGGTCCCGCCCCAGGCAACAGCTCCGCT
GCCCTGCAGGGCCAGGGTACGGCTACCAGGTGACCGCCGAGTTGCCCGCGCTGACCCGCGACGGCCGCT
ACACGTGCACGGCGCCAATAGCCTGGGCCGCGCCGAGGCCAGCGTCTACCTGTTCCGCTTCCACGGCGC
CCCCGAACTCGACCTAGCGTCTGCTGGGCGCGCTGGGCCCAAGGCCCTTGGTGTCTTGGCATT
CTGGGAGCGGTGCCACCCGACGCGACTAGATCACCTGGTCCCCAGGACACCCTCCACGGTCTCAGG
CTCAGGAGTCCAATTATGAAAATTTGAGCCAGATGAGTCCTCCAGGCCACCAGCTGCCACGTGTTGCTG
TGAGGAACTCCTCAGCCATCACCATCTAGTCATTACCATGAGAAA

ACGCGTACGCGGCCGCTCGAGCAGAACTCATCTCAGAAGAGGATCTGGCAGCAAATGATATCCTGGATT
ACAAGGATGACGACGATAAGGTTTAA



[View online »](#)

Protein Sequence: >MR221376 representing NM_001101038
Red=Cloning site Green=Tags(s)

```
MEGSLQLLACLACVLQMGSLVKTRRDASGDLNTEAHSAPAQRWSMQVPAEVNAEAGDAAVLPCTFTHPH
RHYDGPLTAIWRSGEPEYAGPQVFRCTAAPGSELCQTALSLHGRFRLLGNPRRNDLSLRVERLALADSGRY
FCRVEFTGDAHDRIYSRHGVRLRVAAAAPRIVNISVLPGPAHAFRALCTAEGEPPPALAWSGPAPGNSSA
ALQGQGHGYQVTAELPALTRDGRYTCTAANSLGRAEASVYLFRFHGAPGTSTLALLL GALGLKALLLLGI
LGARATRRRLDHLVPQDTPPRSQAQESNYENLSQMSPPGHQLPRVCEELLSHHHLVIHHEK
```

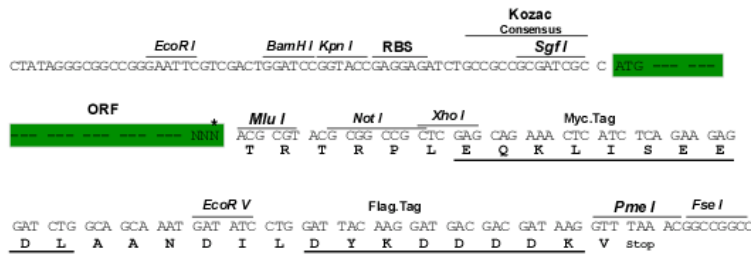
TRTRPLEQKLISEEDLAANDILDYKDDDDKV

Chromatograms: https://cdn.origene.com/chromatograms/ja1294_e07.zip

Restriction Sites: SgfI-MluI

Cloning Scheme:

Cloning sites used for ORF Shutting:



* The last codon before the Stop codon of the ORF

ACCN: NM_001101038

ORF Size: 1026 bp

OTI Disclaimer: The molecular sequence of this clone aligns with the gene accession number as a point of reference only. However, individual transcript sequences of the same gene can differ through naturally occurring variations (e.g. polymorphisms), each with its own valid existence. This clone is substantially in agreement with the reference, but a complete review of all prevailing variants is recommended prior to use. [More info](#)

OTI Annotation: This clone was engineered to express the complete ORF with an expression tag. Expression varies depending on the nature of the gene.

Components: The ORF clone is ion-exchange column purified and shipped in a 2D barcoded Matrix tube containing 10ug of transfection-ready, dried plasmid DNA (reconstitute with 100 ul of water).

- Reconstitution Method:**
1. Centrifuge at 5,000xg for 5min.
 2. Carefully open the tube and add 100ul of sterile water to dissolve the DNA.
 3. Close the tube and incubate for 10 minutes at room temperature.
 4. Briefly vortex the tube and then do a quick spin (less than 5000xg) to concentrate the liquid at the bottom.
 5. Store the suspended plasmid at -20°C. The DNA is stable for at least one year from date of shipping when stored at -20°C.

RefSeq: [NM_001101038.2](#)

RefSeq Size: 1029 bp

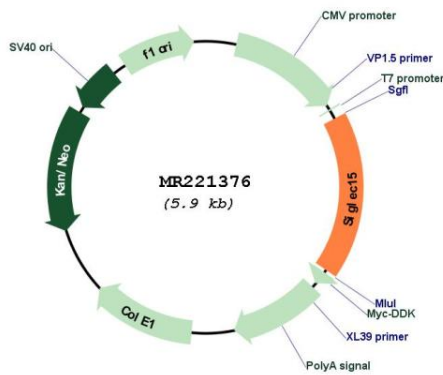
RefSeq ORF: 1029 bp

Locus ID: 620235

Cytogenetics: 18 E3

MW: 37.4 kDa

Product images:



Circular map for MR221376