

Product datasheet for MR221306

Kank1 (NM_181404) Mouse Tagged ORF Clone

Product data:

Product Type:	Expression Plasmids
Product Name:	Kank1 (NM_181404) Mouse Tagged ORF Clone
Tag:	Myc-DDK
Symbol:	Kank1
Synonyms:	A930031B09Rik; Ankrd15; AU015049; AW121052; D330024H06Rik; mKIAA0172
Vector:	pCMV6-Entry (PS100001)
E. coli Selection:	Kanamycin (25 ug/mL)
Cell Selection:	Neomycin
ORF Nucleotide Sequence:	>MR221306 representing NM_181404 Red=Cloning site Blue=ORF Green=Tags(s)

TTTTGTAATACGACTCACTATAGGGCGCCGGAATTCGTCGACTGGATCCGGTACCGAGGAGATCTGCC
GCCGCGATCGCC

ATGGCTTATACCACAAAAGTTAATGGCTGTGCTGCAGAAAAGCAGACGGAGTTCTGAATGGAGACCATA
ACAAGGAAAAGAAAGACCCGTATTTGTGAAACCCCTTACGGTTTTAGCTAGACTTAGATTTTCGTCAA
ATACGTGGATGACATACAAAAGGAAATACTATCAAGAACTGAACATCCAGAAGAGGCGAAAGCCATCT
GTGCCATGTCCAGAAGTCAGGGCCATACCTGGTCAATCAAGGTGTGTGGACTTCCACTGAGTCTGTGCAT
CCTCCAACAGTGATGACAGCAAGCAGTGTCCCAGCTTCTGCTAGCCAGAAGCCACGTTACTTCAACCCC
AATCCCACGGCCACCTGCCCGCTAGAGACCTCACCCACTTTTGTGTGTGAGAAAACCGACAGTGTCTG
CCCCCTCCCTCACCACAACCTCCCAGGCACAACCTCCATGTCCACCAAGACGTTGATGGAGACCCGGAGAA
GACTGGAACAGGAGCGAGTACCATGCAGATGGCACCGGGTACTTCAGGAGGCCAGGCTGGCCAGTTT
TGGAGGCATGGGCTCCACAAGCTCCCTCCCGTCTTTGTGGGGTCTGCTAACCACAGTCTGCAATACAC
CAGTTTCAGAATGGCTACCAAGGCAATGGGGATTATAACAGTACGTCCCAGCAGTCTTACCACGTCTT
CCATGGGAAGCTCCGTCCGGCACAGCCATTGAGTTCAGGGATCTCCACCCAGTGACCAACGTGAGCCC
CATGCACCTGCAGCACATCCGAGAGCAGATGGCCATCGCCTTAAAACGCCTGAAGGAGCTTGAGGAGCAG
GTGAGGACCATCCCTGTGCTCCAGGTCAAGATCTCCGTCTTGCAAGAAGAGAAAAGGCAGTTGGCCCTCGC
AGCTGAAAAGCCAGAGGGCCTCGTCCCAGAACGAAGCGTGCAGGTGTGAGGAAAACGCTCTACAGTGCAGG
CAACGCCTCCCAGCTGGAAGTCTTGCAGGAGCCGAAGAGGCGGCGGGAATTGTACATCGACTACGAG
GAGGAAGAGATGGAGAGCGTAGAGCAGAGCAGCAGCGGATCCAGGAGTTCGACAGCTCACGGCCGACA
TGCAGGCGCTGGAGCGGAAGATTCAGGATAGCAGTGCAGGTGGCATCAGAGCTCAGGGAGAATGGGCA
GTGCCCGTCTCGGAGTGAAGTCTGTGGCCGTGGTGTGATGAGAATGAACGATGTCGTTGTATAC
CACAGAGACTTAAGGCCCTGCAAGGATACGGCTGTGGGACGGTACCGAGACGAGGAATGTTGGCATCA
GGGTGACAGAAGCTATGCTTGGGGTTACTACTGAAGCTGACAAAGAGATTGAGCTGCAGCAGCAGACCAT
AGAGGCCTTAAGGAGAAGATTTACCGCTAGAAGTACAGCTTAAAGAAACCACCATGACCCGAGATG
ACTAAGCTCAAGCAAGAACTACAGGCTGCCGGATCCAGGAAGAAAGTTGACAAGGCCACAATGGCCAGC



CACTTGTCTTCAGCAAGTTGGTGGAGGCACTGGTGCCAACCAGAGATCAAATGGTTGGCAGTCATGTGGA
CACAAGGGAGTCATGTGTTGGGACCTCTGTGCAAAGTAGTAGCGTAGGCACCTCCTGCCATCCTGACTGC
AAGAACCAAGTCGTGGGATCCGAGCTGCCCATGAATTGGTGGGTCGTGAAGGAGAGGGTGGCAATGCATG
ACCAATGCGTAGGGAGGTCTGTTGAGACTTGTGACCGAGTGTGGGTGTGGAAAGTCAGTGTCTGTGAAAC
AGGCAGCAACACAGAGGCTTCTGGGAGCGACCTGACACTCCTTAAGACAACTTGAACCTCAAAGACGTG
CGGTCCATCGGCTGTGGAGATTGTTCCGTGGATGTGATTGTCTGCTTCCCAAGGAGTGCACCTCCCGAA
GCATGAACACGGAGGCTGTAGGCCAGGAGGAAGCAGCTGTCATGGCGGTGCCCATACCACAGACCAGCA
CACCAGCACGAATCTGGAGCGGGTGGACCAGTGCACCTAACACAGAGGCAGCCACCCTGGTGGAGTCTGC
ACCAACTCTCCTCAGCACTATGGACAAGCAGACCAGCACCCAGACTGTGGAGATGCGAACGGTGGCCA
TCGGAGAAGGCCGCTCAGAGACATCAACCCTCCACTAAGACTCGTCCGTTGGTGTGGGACAGTGTCT
GTCTGGCAATTCTGAGTTTGACAGGCCATGTGCTGTGAAGACCAAGAGTCGGGTGTGGGACAGATAAAT
ATTCAGGACAACCTCTAGTTGGTCTCAAATGCGGACCATAGCGTGGGGCCTCCACAGTTGACTGTGG
GGTGTAGGGCAGCAGGAGGAGCGTGGGTGTGGGAACGAGCCCGTAGGAGAGCTCCCGGAGGAGTCTCC
TCAGCCTCGGGTGGCTGTGGAATGGTACTGGCTTGGATCACTACATTGAGCGGTGCAGAGGCTGCTG
GCAGAGCAACAGACGTTGCTGGCTGAGAACTACAGTACTGGCTGGCGGAGGCTTTTGGGAGCCTCATTAC
AGATTGGCTCCCTCAACTCGCAGCTCATCAGCACCTGTGCTCCATCAATTCCGTCATGAAGTCTGCAAG
CACCGAGGAGCTCAGAACTCTGACTTCCAGAAAGCCAGTCTGGGTAAAACCTACAGGAAATCACTTGGAA
TATACCTGCAAGTGTGGAGGCCCTTCGGTCAGGAGGACTGTTAAATGTACAACCATCCCAGCCTGAGGTGG
AGGCGGAGACTGCAGAAGGCAAGCACAGCCGGGCCATGAGCAGTTCATGCAAGGAAGTACCCTGCC
CCCGGTGAACCTGACAGATGACCAGATAGCCACTGGCCTCTACGTATGTCCAAATAATGAAAACACACTG
AAGTCCATCATGAAGAAAAGTGTGGGAATAAAGATTCAAATGGAGCCAAAAAGAATCTTCAGTTTATTG
GCATTAACGGCGGGTATGAGACAACCTCAAGTACGCAATCCAGCTCGGATGGAAGCTCTTCTCCGAGTC
AGTACGAGTGTGACACCATTGGTACCCTCCCGAGGAAGAGGAGGAGGAAGAGAAGGACCACGAC
ACTCGGGGAATGGCGGAAGGGCACACGAGTTAATATTGAAGTTTCAAGTCTGCCAGGGTGAAGATG
AAGTGCAGGTTCCAGAATGTGAGCCTGAGAAGGAGGAAATCAGAGAGAGGTATGAACTAAGTGAAGAT
GTTGTGAGCCTGCAACTTACTGAAATACAACATAAAGGATCCCAAAGCTTTGGCCAGCAAAGATATGAGG
ATCTGTCTGAACACCCTCCAGCAGGATTGGTCCGAGTGTCCAGTCAGAAGTCCGCCGTGCCAGCCATGG
TGGGCGACTACATCGCCGCTTCGAGGCTGTCTCCCGGACGTGCTCCGGTACATCATCAACATGGCGGA
CGGCAATGGCAACTGCCCTCCACTACAGCGTGTCCACTCCAACCTCCAGATCGTCAAGCTGCTTCTG
GATGCAGACGTGTGCAATGTGGATCACCAGAACAAGGCAGGGTACACACCCATCATGCTGGCAGCCCTCG
CGCCGTGGAGGCAGAGAAGGACATGCAGTGTGTAAGAAGTCTTCAGCTGTGGAGACGTGAACGCCAA
GGCCAGTCAGGCGGACAGACGGCCCTCATGCTAGCTGTGAGTACGCGGGGATAGACATGGTGAAGGGC
CTGCTGGCCTGTGGAGCTGATGTCAATATCCAGGACGACGAGGGCTCCACCGCCCTGATGTGTGCCAGT
AACACGGGCATGTGGAGATTGTGAAGTGTGCTGGCCAGCCAGGCTGCAATGGCCACCTGGAAGACAA
TGATGGCAGCACCCTCTCTCCATAGCCCTGGAAGCTGGACACAAGGACATTGCCGTTCTTCTGTACGCC
CACCTCAACTTCTCGAAAGCCAGTCCCGAGCACCCGAGGCTTGGCAGAAAGACATCTCTGTGCCCA
CTCACCGAGGTTCTTTTGAC

ACGCGTACGCGGCCGCTCGAGCAGAACTCATCTCAGAAGAGGATCTGGCAGCAAATGATATCCTGGATT
ACAAGGATGACGACGATAAGGTTTAA

Protein Sequence: >MR221306 representing NM_181404
 Red=Cloning site Green=Tags(s)

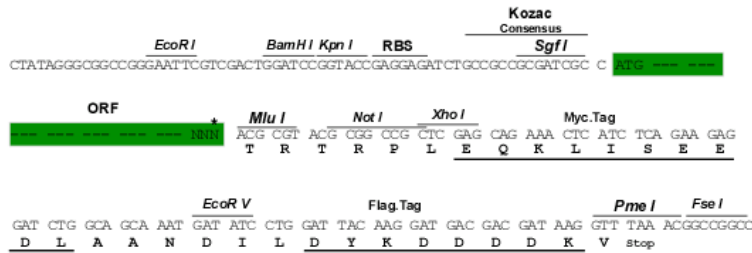
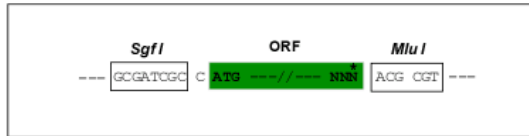
MAYTTKVNCAAEKADGVLNGDHNKEKKDPYFVETPYGFQLDLDFVKYVDDIQKGNTIKKLNIQKRRKPS
 VPCPEVRAIPGHQGVWVSTESLSSNSDDSKQCPSFLLARSHVTSTPIPRPPAPLETSPTFVAVSENQRL
 PPPSPQLPRHNLHVTKTLMETRRRLQERVTMQMAPGDFRRPRLASFVGGMSTSSLPSFVGSANHSSAIH
 QLQNGYQNGDYSYVPAAPTSSMSSVRHSSPLSSGISTPVTNVSMPHLQHIREQMAIALKRLKELEEQ
 VRTIPVLQVKISVLQEEKRLASQLKSQRASSQNEACGVRKRSYSAGNASQLELLARARRGGELYIDYE
 EEMESVEQSTQRIQEFRLTADMALERKIQDSSCEVASELRENGQCPSSRECKSVAVGSDENMNDVVVY
 HRDLRCPCKDTAVGTVTETRVGISVTEAMLGVITEADKEIELQQQTIEALKEKIYRLEVQLKETHDREM
 TKLKQELQAAGSRKKVDKATMAQPLVFSKLVEALVPTRDQMVGSHVDTRESCVGTSVQTSVGTSSCHPDC
 KNQVVGSELPMNWWWKERVAMHDQCVGRSVETCDRSVGVESVCETGSNTEASGSDLTLLKTNLNLKDV
 RSIGCGDCSDVIVCFPKECTSRSMNTEAVGQEEAAVMAVPHTTDQHTSTNLERVDQCTNTEAATLVESC
 TNTLLSTMDKQSTQTVEMRTVAIGGRVVDINPSTKTRSVGVGTVLSGNSEFDRPCAVKTKESVGVQIN
 IQDNYLVGLKMRTIACGPPQLTVGLMGSRRSVGVGNEPVGELPEESPQPRVASGMVTGLDHYIERVQRL
 AEQQTLLAENYSELAEAFGEPSQIGSLNSQLISTLSSINSVMKSASTEELRNSDFQKASLGKTTGNHLE
 YTCKCGGLRSGLLNVQPSQPEVEAETAEGKHSRGHEQFPMQGSTLPPVNLTDQIATGLYVCPNNTL
 KSIMKSDGNKDSNGAKKNLQFINGGYYETTSSDESDDGSSSSSESDDCEDTIGYPPEEEEEEEEDHD
 TRGMAEGHHA VNIIEGFKSARVEDEVQVPECEPEKEEIRERYELSEKMLSACNLLKYNIKDPKALASKDMR
 ICLNTLQHDWFRVSSQKS AVPAMVGDYIAAFEAVSPDLRYIINMADGNGNTALHYSVSHSNFQIVKLL
 DADV CNVDHQNKAGYTPIMLAALAAVEAEKDMQVVEELFCGDVNAKASQAGQTALMLAVSHGRIDMVKG
 LLACGADVNIQDDEGSTALMCASEHGHVEIVKLLLAQPGCNGHLEDNDGSTALSI ALEAGHKDI AVL LYA
 HLNFSKAQSPSTPRLGRKTPSPGPTHRSFD

TRTRPLEQKLISEEDLAANDILDYKDDDDKV

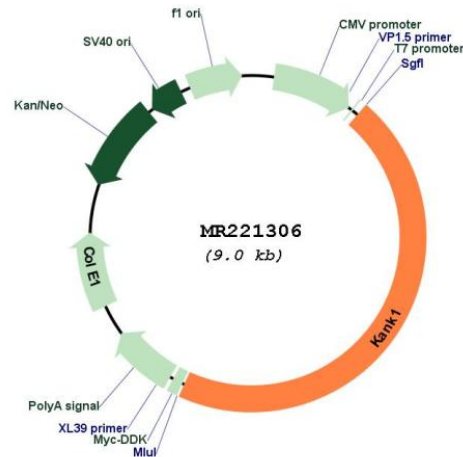
Restriction Sites:
Cloning Scheme:

SgfI-MluI

Cloning sites used for ORF Shuttling:



* The last codon before the Stop codon of the ORF

Plasmid Map:


ACCN: NM_181404

ORF Size: 4080 bp

OTI Disclaimer: The molecular sequence of this clone aligns with the gene accession number as a point of reference only. However, individual transcript sequences of the same gene can differ through naturally occurring variations (e.g. polymorphisms), each with its own valid existence. This clone is substantially in agreement with the reference, but a complete review of all prevailing variants is recommended prior to use. [More info](#)

OTI Annotation: This clone was engineered to express the complete ORF with an expression tag. Expression varies depending on the nature of the gene.

Components: The ORF clone is ion-exchange column purified and shipped in a 2D barcoded Matrix tube containing 10ug of transfection-ready, dried plasmid DNA (reconstitute with 100 ul of water).

Reconstitution Method:

1. Centrifuge at 5,000xg for 5min.
2. Carefully open the tube and add 100ul of sterile water to dissolve the DNA.
3. Close the tube and incubate for 10 minutes at room temperature.
4. Briefly vortex the tube and then do a quick spin (less than 5000xg) to concentrate the liquid at the bottom.
5. Store the suspended plasmid at -20°C. The DNA is stable for at least one year from date of shipping when stored at -20°C.

RefSeq: [NM_181404.6](#)

RefSeq Size: 5425 bp

RefSeq ORF: 4083 bp

Locus ID: 107351

Cytogenetics: 19 B

MW: 148.7 kDa