

## Product datasheet for **MR221248**

### **Tgm7 (NM\_001160424) Mouse Tagged ORF Clone**

#### **Product data:**

Product Type:	Expression Plasmids
Product Name:	Tgm7 (NM_001160424) Mouse Tagged ORF Clone
Tag:	Myc-DDK
Symbol:	Tgm7
Synonyms:	TGMZ; TGz
Mammalian Cell Selection:	Neomycin
Vector:	pCMV6-Entry (PS100001)
E. coli Selection:	Kanamycin (25 ug/mL)



[View online »](#)

ORF Nucleotide  
Sequence:

>MR221248 representing NM\_001160424  
Red=Cloning site Blue=ORF Green=Tags(s)

TTTTGTAATACGACTCACTATAGGGCGGCCGGAATTCGTCGACTGGATCCGGTACCGAGGAGATCTGCC  
GCC**CGCATCGCC**

ATGGATCCTGTGGCAGCCTTGGAGCTCAGGTCTGTGGAAGTGCAGATCCCAGGAACAACAAGACCACC  
ACACTGAGGATTTGGGCTTGTCTGAAGCTCATCCTGCGCCGTGGCCAGATCTTCATCTTAACGATAGTCTT  
CAGTCGACCCCTCCAGCCCCAAAAGGATCATCTCACCTTTGTGGCTGAGACAGGACCAGAGCCACAGAG  
CTTCTGGGACCCGAGCCACTTTCTTCTCGCCAGACCCGACCTGAGAACGTCTGGAGTCTTCTGACT  
TCATGATTGACAGCAACTCTCTCAAGTCTCGATTTTCTACCGGCTAGTGCAGTATTGCCACTACAC  
CCTGAAGTAGAGATCTCTCAGGCCAGGGTCTGGTGTGACTTACCCACTGGGAATTTTCATCTTGCTT  
TTAAACCCATGGAGTACAGAGGATGATGTCTACCTGCCAAGTGAACACTACTGCGGGAGTATATCATGA  
GTGACTACGGCTTATCTACAAGGTCAAACAAATTCATTACCTCCAGGCCCTTGGAACTATGGGCAGTT  
TGAAGAGGACATCGTCGATATCTGCTTTGAGATCCTGAACAAGAGCCTCTATTTTCTAAAGAACCCATCC  
AAAGACCACTCTCAGAGAAACAAGTGGTGTATGTGTGCAGGGTGGTAAGCGCCATGATCAACAGCAATG  
ACGACAGTGGTGTGCTTACGGGAACTGGGGAGAGGATTACTCCAGGGCACCAGCCCTCTGGAATGGAA  
CGGCAGCGTGGCCATCTTGCAGCAGTGGTCTGGCCAAAGGGCGGGCAGCCTGTGAAATATGGACAGTGTGG  
GTCTTTGCTTCTGTTATGTGCACGGTAATGAGATGCTTAGGTGTTCCAACCCGAGTCGTTTCCAATTTCC  
ATTCTGCACACAACAGATGAAAACCTTGACCATCGACACCTACTATGATCGAACCCGAGAAATGCTGAC  
GGCTCAGAGGCCAGACAAAATCTGGAACCTCCAGTCTGGAATGAGTGTGGATGATCAGGAAAGACCTT  
CCACCAGGTTACAACGGCTGGCAGGTTCTGGACCCACCCCCAGCAAACCAGCAGTGGGTTGTTCTGCT  
GTGGCCCTGCCTCTGTGAAAGCCATCAAGGAAGGGGACGTCCAGCTGCCCTATGATACCCCTTTTGTGTA  
TGCAGAAGTGAACGCTGATGAGGTCGTTTGGCTTTTGGGGTGGCCAGGTCCAGGAGATCCTGGCCCAT  
AACACCAGTTACATTGGGAAAGCAATTAGCACCAAGATGGTAGGGTCAGATGAGCGCCTGGACATACCA  
GTTCTACAAGTATCCAGAAGGATCCTCTGAGGAGCGGTCTGCATTATTAAGGCTTCTGGAAATGTCT  
GGAACCGAGAAGGAACGCTTCTCTCTGATCTCTAGGGTCTGAGAACTTAAAGGCTAAGCCTGTG  
AGGCTGCAACTCCACCTGGTTAGGGCACCCATGTGGGGCCAGGACCTGCCGCTCATGCTATATGTCCAGA  
GGGTGCCAGTCAGAGACCATGTTACGGGCTCTGTCGGACTGACGGTGCCTTTTGTGCACAGGCCCTCT  
GCATGGGGGTGGAACCGAAACCGTTCTGGAGACACATAGTACACTTGAATGTGGATTTTGAAGGAG  
CTACAGTGGCCGTTCTGCTGCCCTACAGCAGTTACAGGGACAAGCTGACAGATGAAAGGCTGATCCGTG  
TGGCTGGCATCGCTGAGGTTGAAGAGACAGGGCAGTTCATTCTGGTCTAAAAGATTTCTCTCTGGAGCC  
TCCCCACTTGCTATTGAGGTGTTTGAAGGGCTGAGGTGGGCAAGGCTCTGGATATCCACATCACCCCTC  
ACCAACACCCTGATGGTGCCTCTGAATAACTGCACCATGGTTCTGGAGGGGAGTGGCCTCATCAATGGGC  
AGATGACAAAAGACCTTGGGACTCTGATGGCCGGACACACTATCCGAATTCATCTGGAGCTTACCCCAT  
CAAAGCTGGGCCCCACCAGCTACAAGTCTCATCAGCAGCAGTGGGTCAAGGAGATCAAAGGCTACAAG  
GACATCTTGGTTGCTGCAGCTCCAGCCTCC

**ACGCGT**ACGCGGCCGCTCGAGCAGAACTCATCTCAGAAGAGGATCTGGCAGCAAATGATATCCTGGATT  
ACAAGGATGACGACGATAAGGTTTAA

**Protein Sequence:** >MR221248 representing NM\_001160424  
Red=Cloning site Green=Tags(s)

MDPVAALELRVELQIPRNKDHHTEDLGLSKLILRRGQIFILTIVFSRPFQPKDHLTFVAETGPEPTE  
 LLGTRATFFLAQTRPENVWSASDFMIDSNLSQVSIQSQGQPGVTYPLGNFILL  
 FNPWSTEDDVYLPSETLLREYIMSDYGF IYKQQTNSITSRPWNYGQFEEDIVDICFEILNKSLYFLKNPS  
 KDHSQRNNVVYVCRVVSAMINSNDDSGVLQGNWGEDYSQGTSPLEWNGSVAILRQWSAKGGQPVKYGQCW  
 VFASVMCTVMRCLGVPTRVVSNFHSAHNTDGNLTIDTYDRTAEMLTAQRPKIWNFHVWNECWMIRKDL  
 PPGYNGWQVLDPTPQQTSSGLFCCGPASVKAIKEGDVQLPYDTPFVYAEVNADEVVWLFEGGQVQEILAH  
 NTSYIGKAIISTKMVGS DERLDITSSYKYPEGSSEERSAFIKASWKLEPRRNASSLLDLLGSENKAKPV  
 RLQLHLVRAPMWGQDLPLMLYVQRPVDRHVQGSVGLTVRFCAQALLHGGGTRKPFWRHIVHLNVDFEKE  
 LQWPFLLPYSSYRDKLTDERLIRVAGIAEVEETGQFILVLKDFSLEPPHLSIEVFERAEVKGALDIHITL  
 TNTLMVPLNNCTMVLESGLINGQMTKDLGLTMAGHTIRIHLELYPIKAGPHQLQLVLSSEVKEIKGYK  
 DILVAAAPAS

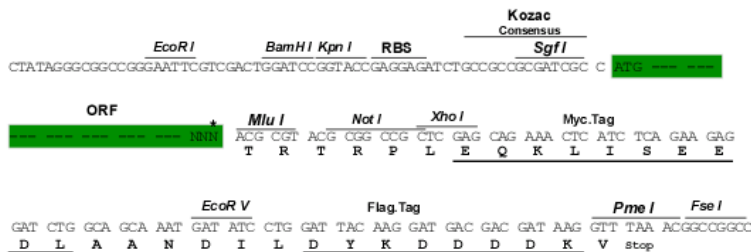
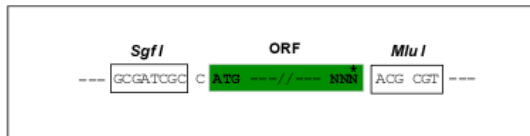
TRTRPLEQKLI SEEDLAANDILDYKDDDDKV

**Chromatograms:** [https://cdn.origene.com/chromatograms/mm9093\\_h05.zip](https://cdn.origene.com/chromatograms/mm9093_h05.zip)

**Restriction Sites:** SgfI-MluI

**Cloning Scheme:**

Cloning sites used for ORF Shuttling:



\* The last codon before the Stop codon of the ORF

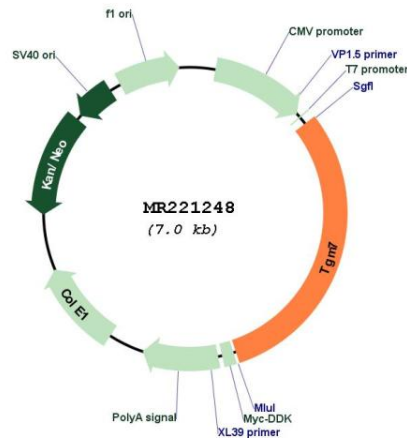
**ACCN:** NM\_001160424

**ORF Size:** 2130 bp

**OTI Disclaimer:** The molecular sequence of this clone aligns with the gene accession number as a point of reference only. However, individual transcript sequences of the same gene can differ through naturally occurring variations (e.g. polymorphisms), each with its own valid existence. This clone is substantially in agreement with the reference, but a complete review of all prevailing variants is recommended prior to use. [More info](#)

**OTI Annotation:** This clone was engineered to express the complete ORF with an expression tag. Expression varies depending on the nature of the gene.

<b>Components:</b>	The ORF clone is ion-exchange column purified and shipped in a 2D barcoded Matrix tube containing 10ug of transfection-ready, dried plasmid DNA (reconstitute with 100 ul of water).
<b>Reconstitution Method:</b>	<ol style="list-style-type: none"> <li>1. Centrifuge at 5,000xg for 5min.</li> <li>2. Carefully open the tube and add 100ul of sterile water to dissolve the DNA.</li> <li>3. Close the tube and incubate for 10 minutes at room temperature.</li> <li>4. Briefly vortex the tube and then do a quick spin (less than 5000xg) to concentrate the liquid at the bottom.</li> <li>5. Store the suspended plasmid at -20°C. The DNA is stable for at least one year from date of shipping when stored at -20°C.</li> </ol>
<b>Note:</b>	Plasmids are not sterile. For experiments where strict sterility is required, filtration with 0.22um filter is required.
<b>RefSeq:</b>	<u>NM_001160424.1, NP_001153896.1</u>
<b>RefSeq Size:</b>	2133 bp
<b>RefSeq ORF:</b>	2133 bp
<b>Locus ID:</b>	640543
<b>Cytogenetics:</b>	2 E5
<b>MW:</b>	79.8 kDa

**Product images:**


Circular map for MR221248