

Product datasheet for MR221193

Klk5 (NM_026806) Mouse Tagged ORF Clone

Product data:

Product Type:	Expression Plasmids
Product Name:	Klk5 (NM_026806) Mouse Tagged ORF Clone
Tag:	Myc-DDK
Symbol:	Klk5
Synonyms:	1110030O19Rik
Mammalian Cell Selection:	Neomycin
Vector:	pCMV6-Entry (PS100001)
E. coli Selection:	Kanamycin (25 ug/mL)
ORF Nucleotide Sequence:	>MR221193 ORF sequence Red=Cloning site Blue=ORF Green=Tags(s)

TTTTGTAATACGACTCACTATAGGGCGGCCGGAATTCGTCGACTGGATCCGGTACCGAGGAGATCTGCC
GCC**CGATCGCC**

ATGGCGAGGACCGGACACCCCTGGAAATGGGCAATGGCTACCCTGATCACAACCCTGGTTCTGGGGTCT
CAGAGCCTGTTCTTGCTGGGGATGTTTCCTCTTGACAAACCCCTCTGGAACCGAACCCCTCTGGGACCAA
CAGAGACCTCAGCACGGATTCCAAGTCTGGGGAGGACACCCGTTCCAGATAGCAGCTCTCGAATTGTGAAT
GGGTGAGACTGCCAAAAGGATGCACAGCCATGGCAGGGCGCCCTGCTTCTGGGGCCCAACAAGCTGTACT
GTGGGGCTGTGCTGATCAGCCACAGTGGCTGCTCACAGCAGCACACTGCAGAAAGCCAGTGTTCAGAAT
CCGTCTGGGCCACCATTCATGTACCTGTCTATGAGTCTGGGCAGCAGATGTTCCAGGGAATCAAATCC
ATCCCCACCCCGTTACTCCCACCCCTGGCCACTCCAATGACCTCATGCTCATAAAATGAACAGAAAAA
TCCGTGACTCTCACTCAGTGAAGCCCGTCGAAATTGCTTGTGACTGTGCCACCGAGGGGACTAGGTGCAT
GGTGTCTGGCTGGGGACAACGAGCAGCAGCCACAATAACTTCCCAGAAAGTCCCTCAGTGCCTGAATATT
ACTGTGCTCAGTGAAGAGAGGTGTAATAACTCTACCCAGGACAGATAGACAAGACCATGTTCTGCGCAG
GTGATGAAGAGGGCAGGGACTCCTGCCAGGGTATTCCGGAGTCTGTGGTCTGCAATGGCAAGTTACA
GGCCCTTGTCTCTGGGGTATTCCCCCTGTGCTCAGCGGAACAGACCAGGTGTCTACACCAACCTGTGT
GAGTTCGTTAAGTGGATTAAGACACCATGAACTCCAAC

ACGCGTACGCGGCCGCTCGAGCAGAAACTCATCTCAGAAGAGGATCTGGCAGCAAATGATATCCTGGATT
ACAAGGATGACGACGATAAGGTTAA



[View online »](#)

Protein Sequence: >MR221193 protein sequence
Red=Cloning site Green=Tags(s)

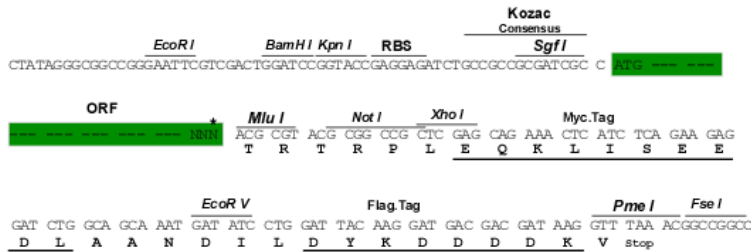
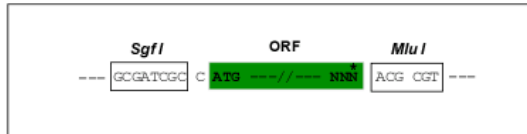
MARTGHPWKWAMATLITTLVLGVSEPVLAGDVSSCDNPSGTEPSGTNRDLSTDSKSGEDTRSDSSSRIVN
 GSDCQKDAQPWQGALLLGNPKLYCGAVLISPQWLLTAAHCRKPVFRIRLGHHSMPVYVYSGQQMFQGIKS
 IPHPGYSHPGHSNDLMLIKMNRKIRDHSVVKPVEIACDCATEGTRCMVSGWGTSSSHNNFPKVLQCLNI
 TVLSEERCKNSYPGIDKTMFCAGDEEGRDSCQGDSSGGPVVVCNGKLQGLVSWGDFPCAQRNRPVGYTNLC
 EFVKWIKDTMNSN

TRTRPLEQKLISEEDLAANDILDYKDDDDKV

Restriction Sites: SgfI-MluI

Cloning Scheme:

Cloning sites used for ORF Shuttling:



* The last codon before the Stop codon of the ORF

ACCN: NM_026806

ORF Size: 882 bp

OTI Disclaimer: The molecular sequence of this clone aligns with the gene accession number as a point of reference only. However, individual transcript sequences of the same gene can differ through naturally occurring variations (e.g. polymorphisms), each with its own valid existence. This clone is substantially in agreement with the reference, but a complete review of all prevailing variants is recommended prior to use. [More info](#)

OTI Annotation: This clone was engineered to express the complete ORF with an expression tag. Expression varies depending on the nature of the gene.

Components: The ORF clone is ion-exchange column purified and shipped in a 2D barcoded Matrix tube containing 10ug of transfection-ready, dried plasmid DNA (reconstitute with 100 ul of water).

Reconstitution Method:

1. Centrifuge at 5,000xg for 5min.
2. Carefully open the tube and add 100ul of sterile water to dissolve the DNA.
3. Close the tube and incubate for 10 minutes at room temperature.
4. Briefly vortex the tube and then do a quick spin (less than 5000xg) to concentrate the liquid at the bottom.
5. Store the suspended plasmid at -20°C. The DNA is stable for at least one year from date of shipping when stored at -20°C.

RefSeq: [NM_026806.2](#), [NP_081082.1](#)

RefSeq Size: 1239 bp

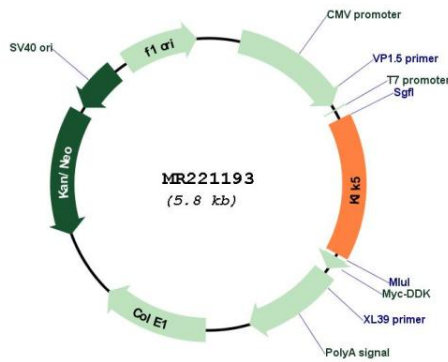
RefSeq ORF: 882 bp

Locus ID: 68668

Cytogenetics: 7 28.3 cM

MW: 31.9 kDa

Product images:



Circular map for MR221193